

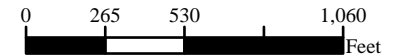
Houston County Minnesota

Farm 1161 Tract 1105

Phy. County: Houston, MN

2026 Program Year

2023 NAIP Imagery
Map Created 04/01/2026



- Unless Otherwise Noted:
 All fields are non-irrigated
 Shares are 100% to operator
 Corn = Yellow for Grain
 Soybeans = Common for Grain
 Wheat = HRS, HRW = Grain
 Sunflowers = Oil, Non-Oil = Grain
 Oats & Barley = Spring for Grain
 Canola = Spring for Seed
 Alfalfa = For Forage
 Mix Forage AGM, GMA, IGS = for Forage
 Rye = for Grain
 Peas = Process
 Beans = Dry Edible
 Native Annual Grass = for Grazing

Tract Boundary

Noncropland

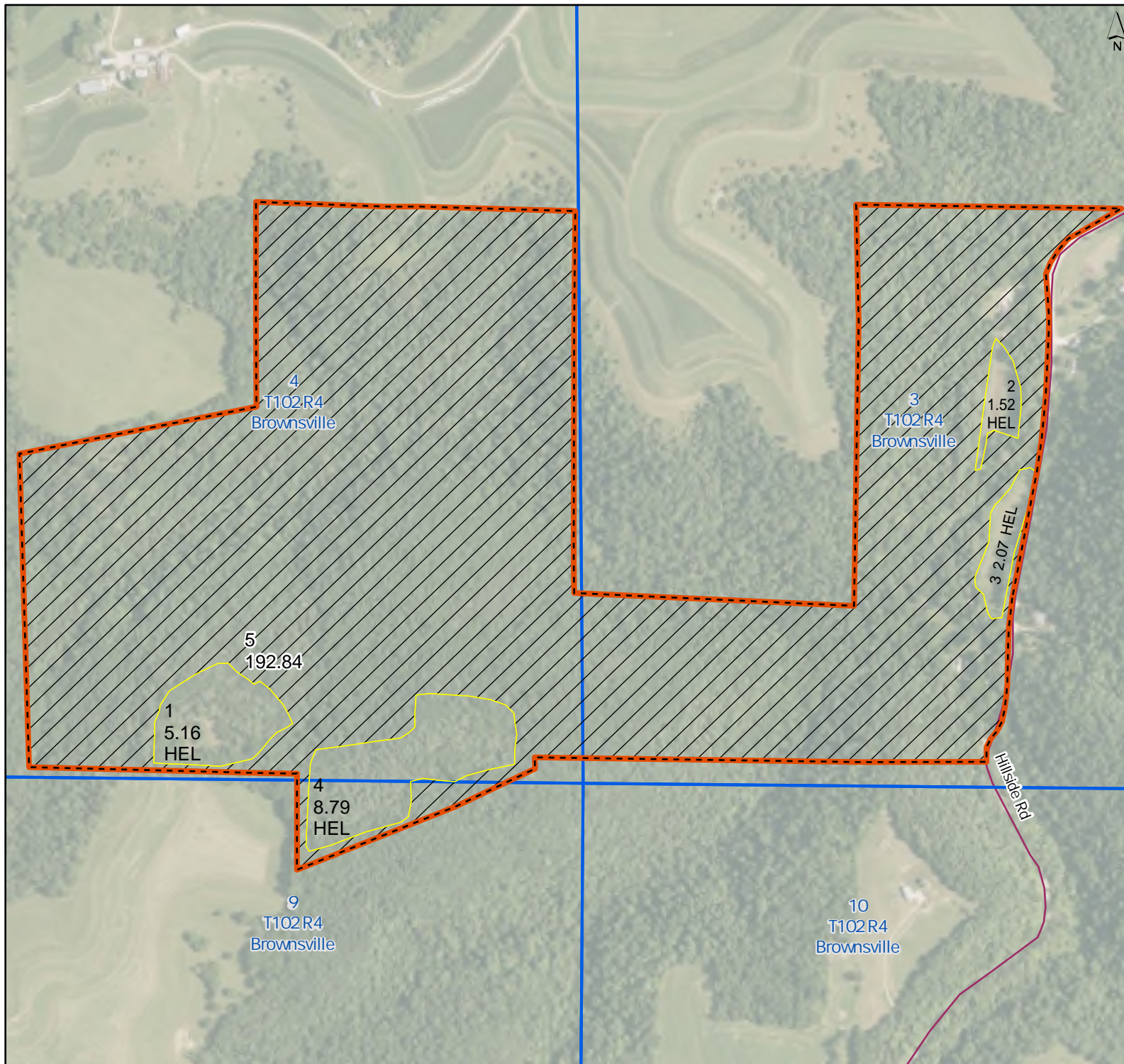
Cropland

PLSS

Wetland Determination Identifiers

- Restricted Use
- Limited Restrictions
- Exempt from Conservation Compliance Provisions

Tract Cropland Total: 17.54 acres



United States Department of Agriculture (USDA) Farm Service Agency (FSA) maps are for FSA Program administration only. This map does not represent a legal survey or reflect actual ownership; rather it depicts the information provided directly from the producer and/or National Agricultural Imagery Program (NAIP) imagery. The producer accepts the data 'as is' and assumes all risks associated with its use. USDA-FSA assumes no responsibility for actual or consequential damage incurred as a result of any user's reliance on this data outside FSA Programs. Wetland identifiers do not represent the size, shape, or specific determination of the area. Refer to your original determination (CPA-026 and attached maps) for exact boundaries and determinations or contact USDA NRCS. USDA is an equal opportunity provider, employer, and lender.

