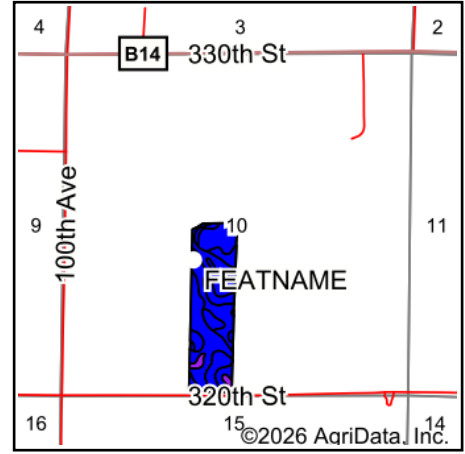
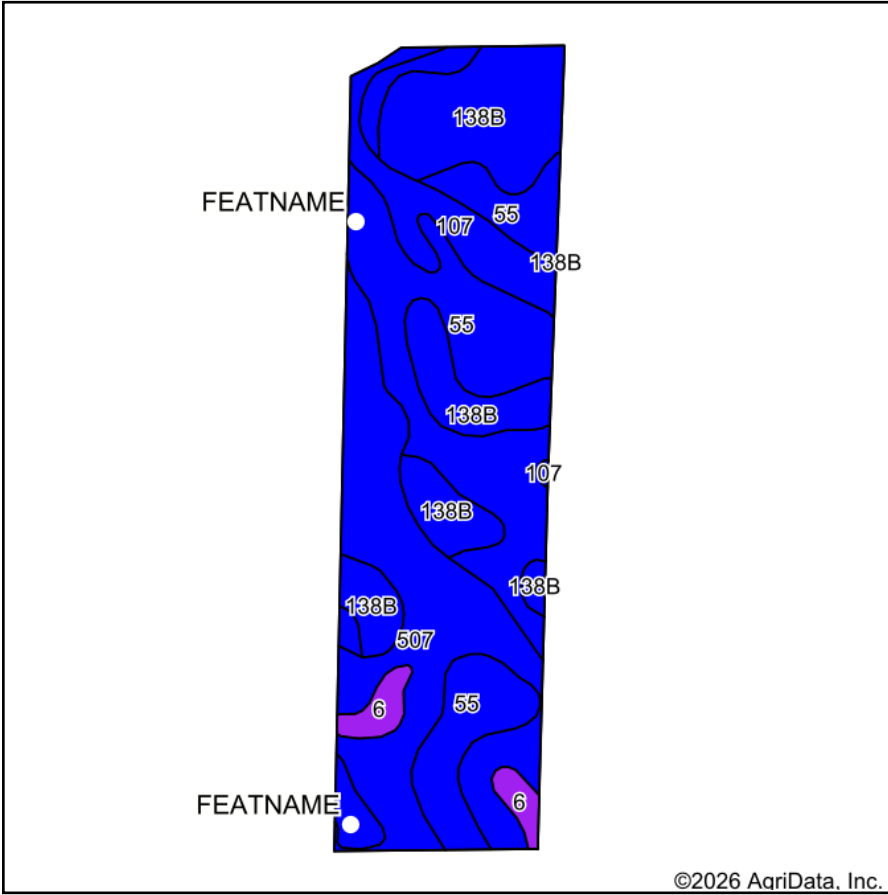


Soils Map



State: **Iowa**
 County: **Kossuth**
 Location: **10-97N-29W**
 Township: **Burt**
 Acres: **40.25**
 Date: **2/26/2026**



Soils data provided by USDA and NRCS.

Area Symbol: IA109, Soil Area Version: 32

Code	Soil Description	Acres	Percent of field	CSR2 Legend	Restrictive Layer	Soil Drainage	Non-Irr Class *c	*j Corn Bu	*j Alfalfa Tons	*j Soybeans Bu	*j Bluegrass Tons	*j Tall Grasses Tons	*j Water-Holding Inch	CSR2**	CSR	*n NCC Over	
55	Nicollet clay loam, 1 to 3 percent slopes	15.00	37.2%		> 6.5ft.	Somewhat poorly drained	lw	233.6	6.1	67.7	4.2	7.0	10.5	89	85		
507	Canisteo clay loam, 0 to 2 percent slopes	11.15	27.7%		> 6.5ft.	Poorly drained	llw	224.0	4.7	65.0	4.0	6.7	10.0	84	75		
138B	Clarion loam, 2 to 6 percent slopes	9.74	24.2%		> 6.5ft.	Moderately well drained	lle	225.6	6.3	65.4	4.1	6.8	11.3	89	77		
107	Webster clay loam, 0 to 2 percent slopes	3.17	7.9%		> 6.5ft.	Poorly drained	llw	224.0	4.7	65.0	4.0	6.7	11.0	86	80		
6	Okoboji silty clay loam, 0 to 1 percent slopes	1.19	3.0%		> 6.5ft.	Very poorly drained	lllw	177.6	3.7	51.5	3.2	5.3	11.7	59	54		
Weighted Average								1.66	226.6	5.6	65.7	4.1	6.8	10.6	86.5	79	*n

**IA has updated the CSR values for each county to CSR2.

*j Yield data provided by the ISPAID Database version 8.1.1 developed by IA State University.

*n: The aggregation method is "Weighted Average using all components"

*c: Using Capabilities Class Dominant Condition Aggregation Method

Soils data provided by USDA and NRCS.

Maps Provided By:



© AgriData, Inc. 2025

www.AgriDataInc.com

	Symbol	Name	Description
	WDR	FEATNAME	FEATDESC