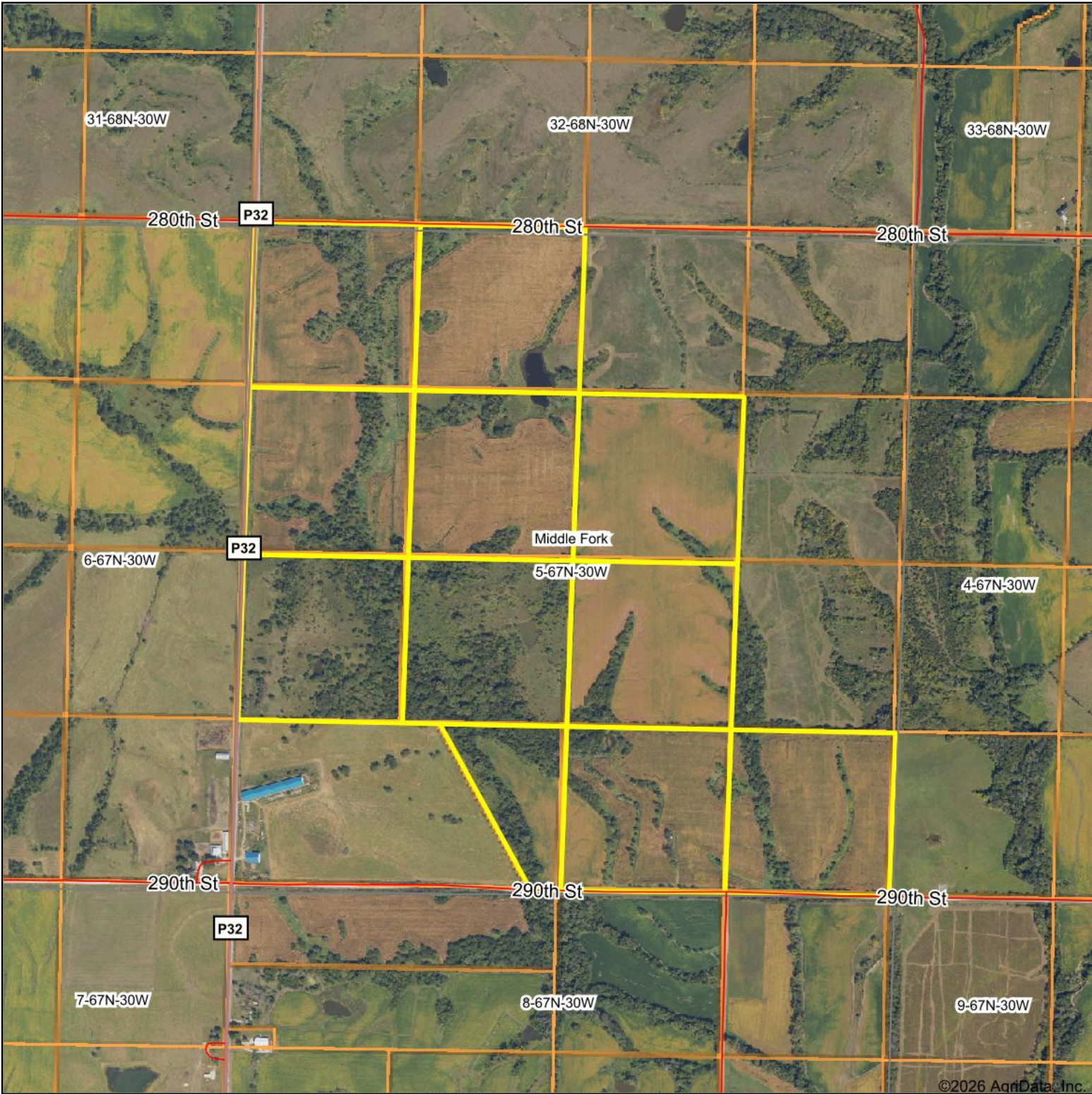


Aerial Map



Boundary Center: 40° 37' 54.72, -94° 19' 42.69



5-67N-30W
Ringgold County
Iowa



4/3/2026



© AgriData, Inc. 2025 www.AgriDataInc.com

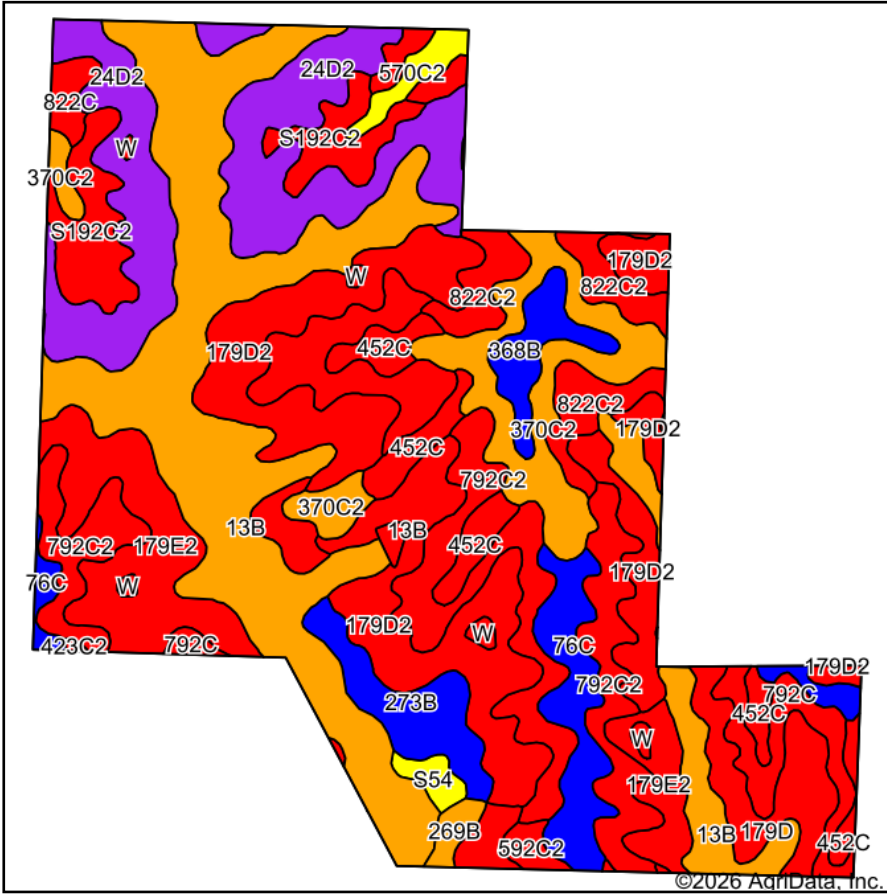
Maps Provided By:



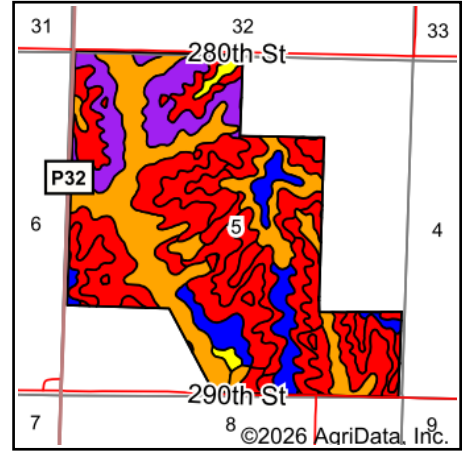
© AgriData, Inc. 2025

www.AgriDataInc.com

Soils Map



Soils data provided by USDA and NRCS.



State: **Iowa**
 County: **Ringgold**
 Location: **5-67N-30W**
 Township: **Middle Fork**
 Acres: **408.73**
 Date: **4/6/2026**



HIGH POINT
 LAND COMPANY

Maps Provided By:



© AgriData, Inc. 2025

www.AgriDataInc.com



Area Symbol: IA159, Soil Area Version: 31

Code	Soil Description	Acres	Percent of field	CSR2 Legend	Restrictive Layer	Soil Drainage	Non-Irr Class *c	*i Corn Bu	*i Alfalfa Tons	*i Soybeans Bu	*i Bluegrass Tons	*i Tall Grasses Tons	*i Water-Holding Inch	CSR2**	CSR
13B	Olmitz-Zook-Humeston complex, 0 to 5 percent slopes	85.25	20.8%		> 6.5ft.	Poorly drained	llw	80.0	1.7	23.2	1.4	2.4	11.7	78	59
179D2	Gara loam, 9 to 14 percent slopes, moderately eroded	59.09	14.5%		> 6.5ft.	Well drained	lVe	163.2	4.6	47.3	2.9	4.9	10.7	38	43
792C2	Armstrong clay loam, 5 to 9 percent slopes, moderately eroded	49.20	12.0%		> 6.5ft.	Somewhat poorly drained	llle	123.2	3.4	35.7	2.2	3.7	9.2	24	27
24D2	Shelby clay loam, 9 to 14 percent slopes, moderately eroded	45.24	11.1%		> 6.5ft.	Well drained	llle	168.0	4.7	48.7	3.0	5.0	10.2	51	48

Soils data provided by USDA and NRCS.

Code	Soil Description	Acres	Percent of field	CSR2 Legend	Restrictive Layer	Soil Drainage	Non-Irr Class *c	*i Corn Bu	*i Alfalfa Tons	*i Soybeans Bu	*i Bluegrass Tons	*i Tall Grasses Tons	*i Water-Holding Inch	CSR2**	CSR
179E2	Gara loam, 14 to 18 percent slopes, moderately eroded	27.26	6.7%		> 6.5ft.	Well drained	Vle	139.2	3.9	40.4	2.5	4.2	10.7	24	33
370C2	Sharpsburg silty clay loam, 5 to 9 percent slopes, eroded	24.45	6.0%		> 6.5ft.	Moderately well drained	Ille	204.8	5.7	59.4	3.7	6.1	11.9	80	67
822C2	Lamoni silty clay loam, 5 to 9 percent slopes, moderately eroded	17.04	4.2%		> 6.5ft.	Somewhat poorly drained	Ille	129.6	3.4	37.6	2.3	3.9	9.5	31	30
76C	Ladoga silt loam, 5 to 9 percent slopes	15.46	3.8%		> 6.5ft.	Moderately well drained	Ille	196.8	5.5	57.1	3.5	5.9	11.8	81	67
S192C2	Adair clay loam, heavy till, 5 to 9 percent slopes, moderately eroded	14.86	3.6%		> 6.5ft.	Somewhat poorly drained	Ille	0.0	0.0	0.0	0.0	0.0	0.0	29	
452C	Lineville silt loam, 5 to 9 percent slopes	12.70	3.1%		> 6.5ft.	Somewhat poorly drained	Ille	80.0	2.1	23.2	1.4	2.4	10.8	48	36
179D	Gara loam, 9 to 14 percent slopes	11.15	2.7%		> 6.5ft.	Well drained	IVe	168.0	4.7	48.7	3.0	5.0	10.7	42	45
273B	Olmitz loam, heavy till, 2 to 5 percent slopes	10.13	2.5%		> 6.5ft.	Moderately well drained	Ile	224.0	6.3	65.0	4.0	6.7	10.8	81	72
792C	Armstrong loam, 5 to 9 percent slopes	10.13	2.5%		1.5ft. (Abrupt textural change)	Somewhat poorly drained	Ille	128.0	3.6	37.1	2.3	3.8	9.2	35	31
368B	Macksburg silty clay loam, 2 to 5 percent slopes	6.45	1.6%		> 6.5ft.	Somewhat poorly drained	Ile	222.4	5.8	64.5	4.0	6.7	11.9	89	90
592C2	Mystic clay loam, 5 to 9 percent slopes, moderately eroded	4.97	1.2%		> 6.5ft.	Somewhat poorly drained	Ille	115.2	3.0	33.4	2.1	3.5	10.5	31	20
570C2	Nira silty clay loam, 5 to 9 percent slopes, moderately eroded	3.13	0.8%		> 6.5ft.	Moderately well drained	Ille	187.2	5.2	54.3	3.4	5.6	11.7	68	64

Code	Soil Description	Acres	Percent of field	CSR2 Legend	Restrictive Layer	Soil Drainage	Non-Irr Class *c	*i Corn Bu	*i Alfalfa Tons	*i Soybeans Bu	*i Bluegrass Tons	*i Tall Grasses Tons	*i Water-Holding Inch	CSR2**	CSR	
W	Water	3.02	0.7%		> 6.5ft.			0.0	0.0	0.0	0.0	0.0	0.0	0	0	
592D2	Mystic clay loam, 9 to 14 percent slopes, moderately eroded	2.56	0.6%		> 6.5ft.	Somewhat poorly drained	Ive	88.0	2.3	25.5	1.6	2.6	10.5	10	5	
822C	Lamoni silty clay loam, 5 to 9 percent slopes	2.50	0.6%		> 6.5ft.	Somewhat poorly drained	Ille	134.4	3.5	39.0	2.4	4.0	9.5	39	35	
S54	Zook silty clay loam, heavy till, 0 to 2 percent slopes, occasionally flooded	2.07	0.5%		> 6.5ft.	Poorly drained	llw	0.0	0.0	0.0	0.0	0.0	0.0	68		
269B	Humeston silty clay loam, 2 to 5 percent slopes, rarely flooded	1.89	0.5%		> 6.5ft.	Poorly drained	llw	80.0	1.7	23.2	1.4	2.4	10.1	71	53	
423C2	Bucknell silty clay loam, 5 to 9 percent slopes, moderately eroded	0.18	0.0%		0.9ft. (Abrupt textural change)	Somewhat poorly drained	Ille	126.4	3.3	36.7	2.3	3.8	9.4	34	29	
Weighted Average								*-	132	3.6	38.3	2.4	4	10.2	50.9	*-

**IA has updated the CSR values for each county to CSR2.

*- CSR weighted average cannot be calculated on the current soils data, use prior data version for csr values.*i Yield data provided by the ISPAID Database version 8.1.1 developed by IA State University.

*c: Using Capabilities Class Dominant Condition Aggregation Method

*- Non Irr Class weighted average cannot be calculated on the current soils data due to missing data.