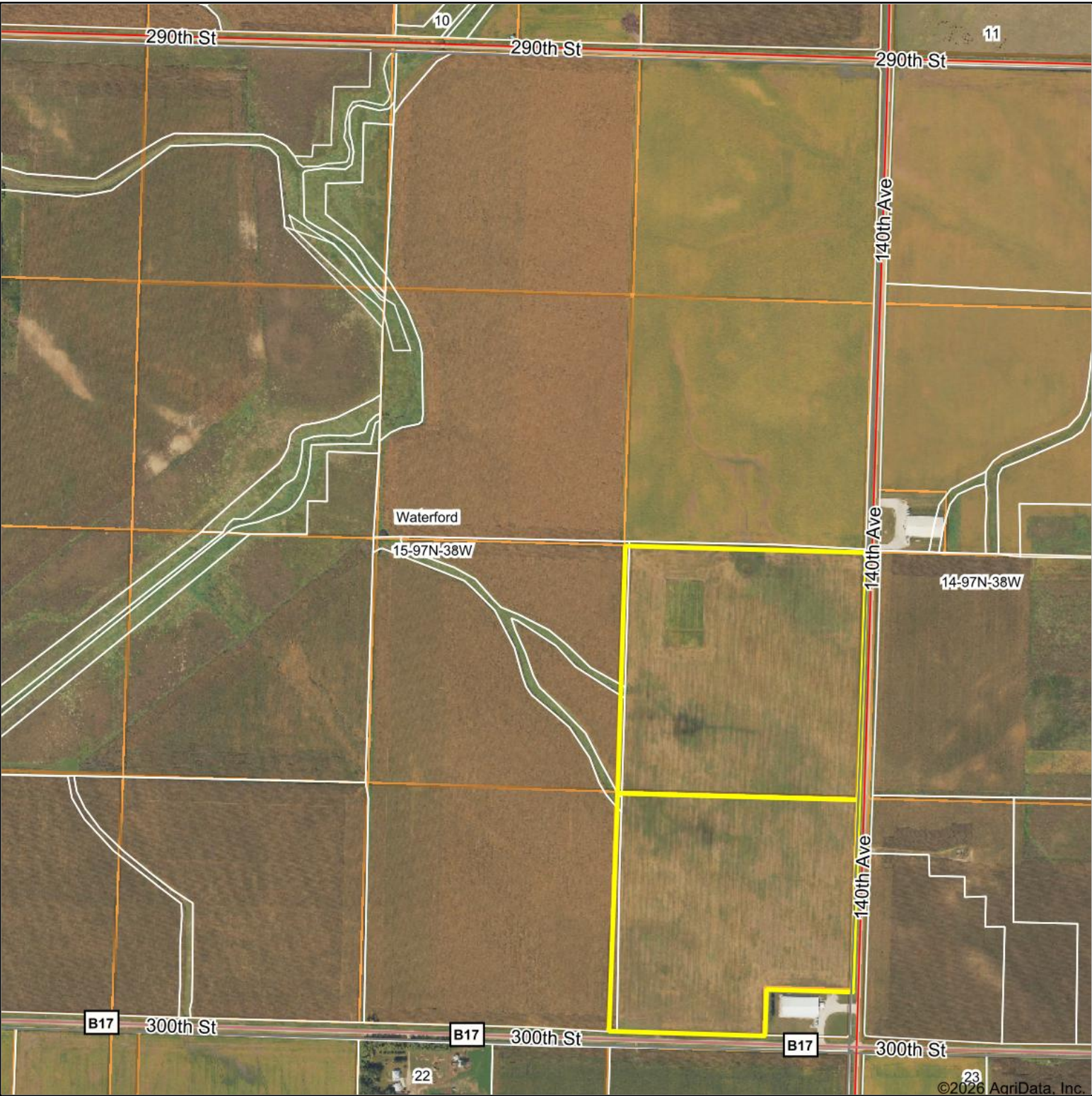
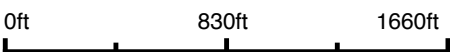


Aerial Map



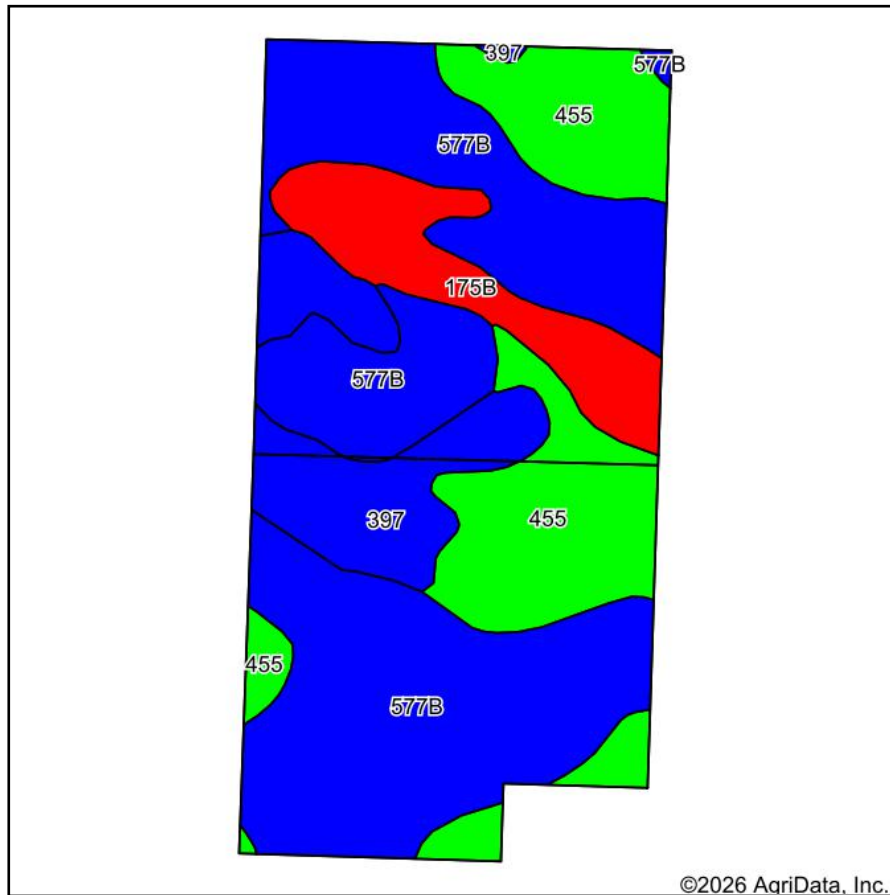
Boundary Center: 43° 12' 58.4, -95° 18' 40.92



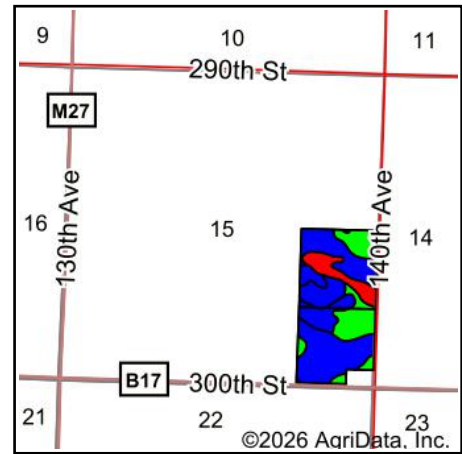
15-97N-38W  
Clay County  
Iowa



# Soils Map



Soils data provided by USDA and NRCS.



State: **Iowa**  
 County: **Clay**  
 Location: **15-97N-38W**  
 Township: **Waterford**  
 Acres: **73.55**  
 Date: **1/20/2026**

Maps Provided By:  
  
 CUSTOMIZED ONLINE MAPPING  
 © AgriData, Inc. 2025 www.AgriDataInc.com



Area Symbol: IA041, Soil Area Version: 35

Code	Soil Description	Acres	Percent of field	CSR2 Legend	Restrictive Layer	Soil Drainage	Non-Irr Class *c	*i Corn Bu	*i Alfalfa Tons	*i Soybeans Bu	*i Bluegrass Tons	*i Tall Grasses Tons	*i Water-Holding Inch	CSR2**	CSR	*n NCC Over
577B	Everly clay loam, 2 to 5 percent slopes	38.72	52.7%		> 6.5ft.	Moderately well drained	Ile	225.6	6.3	65.4	4.1	6.8	10.5	88	68	
455	Wilmington clay loam, 1 to 3 percent slopes	17.76	24.1%		> 6.5ft.	Somewhat poorly drained	Ie	233.6	6.1	67.7	4.2	7.0	11.2	91	74	
397	Letri clay loam, 0 to 2 percent slopes	9.40	12.8%		> 6.5ft.	Poorly drained	Ilw	224.0	4.7	65.0	4.0	6.7	11.1	90	72	
175B	Dickinson fine sandy loam, 2 to 5 percent slopes	7.67	10.4%		> 6.5ft.	Somewhat excessively drained	Ille	80.0	2.2	23.2	1.4	2.4	5.3	47	36	
Weighted Average							1.86	212.1	5.6	61.5	3.8	6.4	10.2	84.7	66.6	*n

\*\*IA has updated the CSR values for each county to CSR2.

\*i Yield data provided by the ISPAID Database version 8.1.1 developed by IA State University.

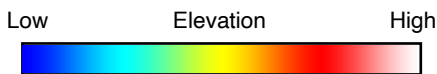
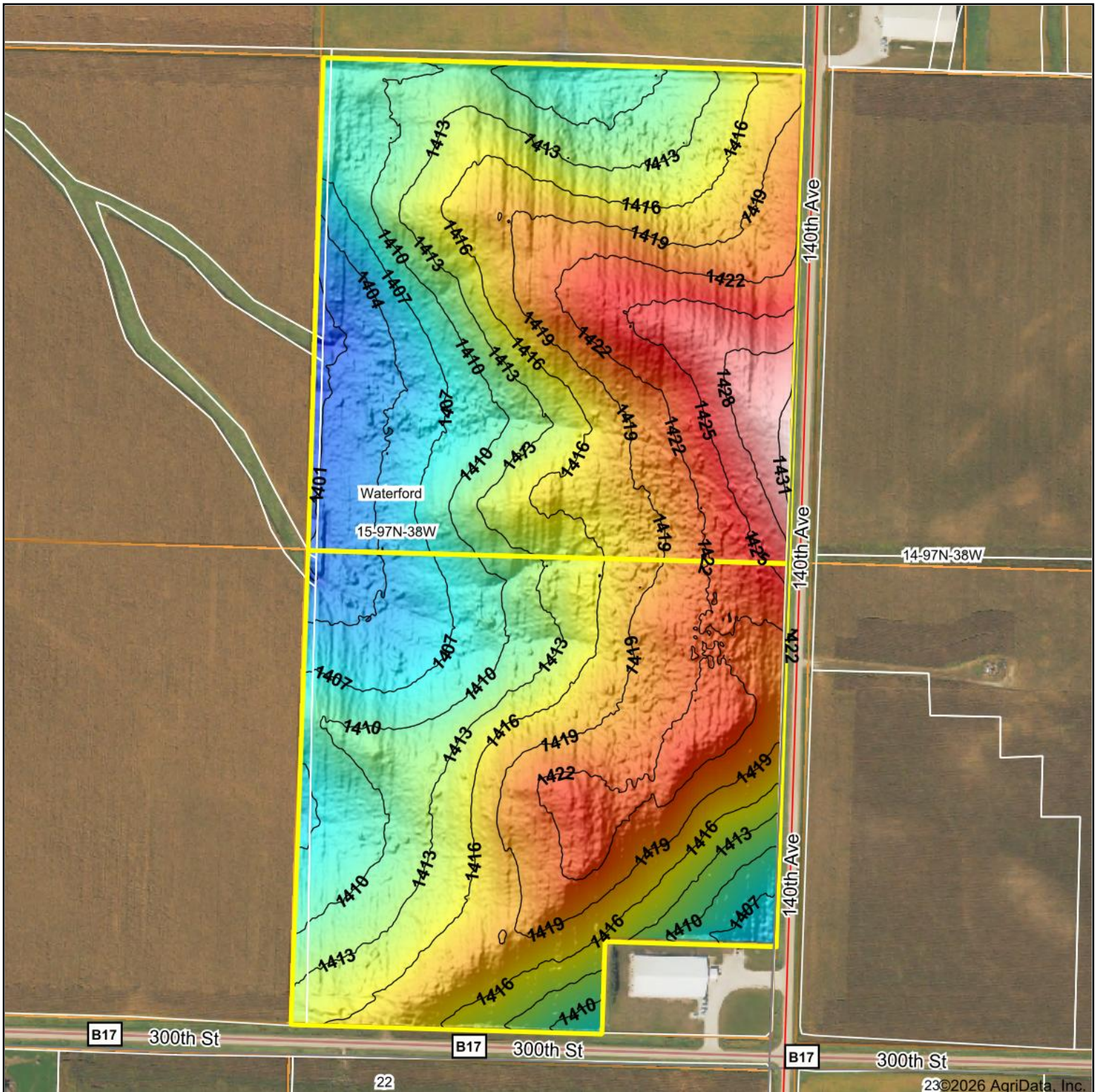
\*n: The aggregation method is "Weighted Average using all components"

\*c: Using Capabilities Class Dominant Condition Aggregation Method

Soils data provided by USDA and NRCS.



# Topography Hillshade



Source: USGS 1 meter dem

Interval(ft): 3

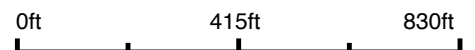
Min: 1,398.2

Max: 1,433.1

Range: 34.9

Average: 1,414.8

Standard Deviation: 6.53 ft



2/18/2026

**15-97N-38W**  
**Clay County**  
**Iowa**

Boundary Center: 43° 12' 58.4, -95° 18' 40.92

Maps Provided By:



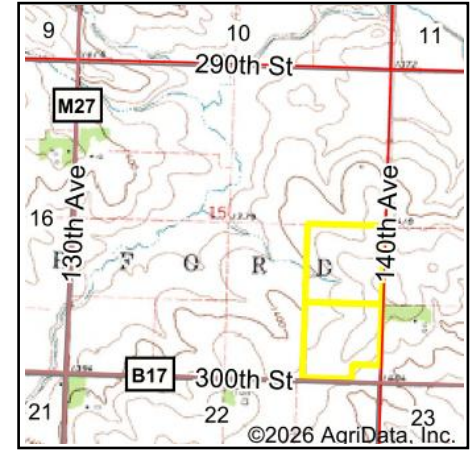
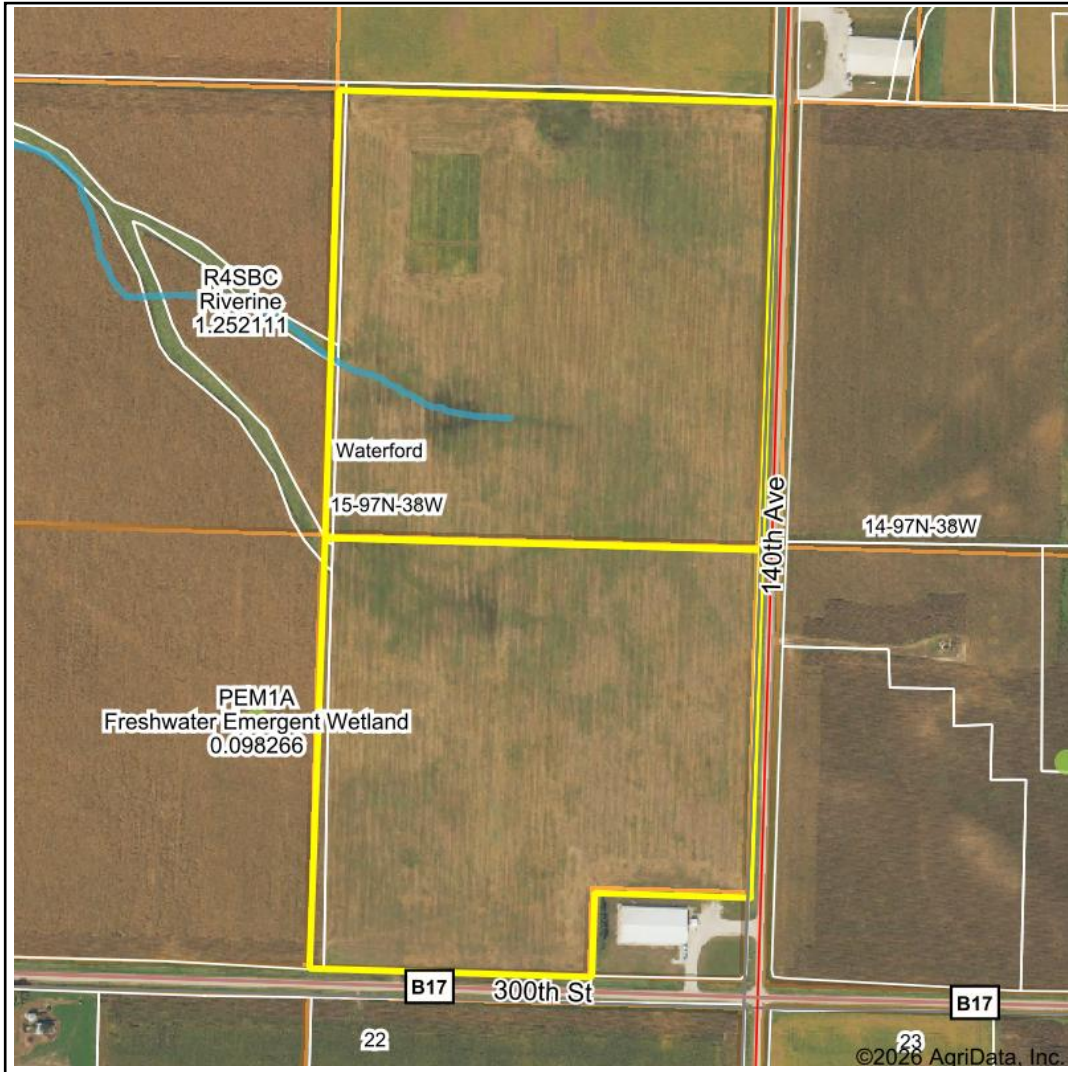
© AgriData, Inc. 2025

www.AgriDataInc.com

Field borders provided by Farm Service Agency as of 5/21/2008.



# Wetlands Map



State: **Iowa**  
 Location: **15-97N-38W**  
 County: **Clay**  
 Township: **Waterford**  
 Date: **2/18/2026**

Maps Provided By:



0ft 647ft 1295ft

Classification Code	Type	Acres
R4SBC	Riverine	0.26
	Total Acres	0.26

Data Source: National Wetlands Inventory website. U.S. DoI, Fish and Wildlife Service, Washington, D.C. <http://www.fws.gov/wetlands/>