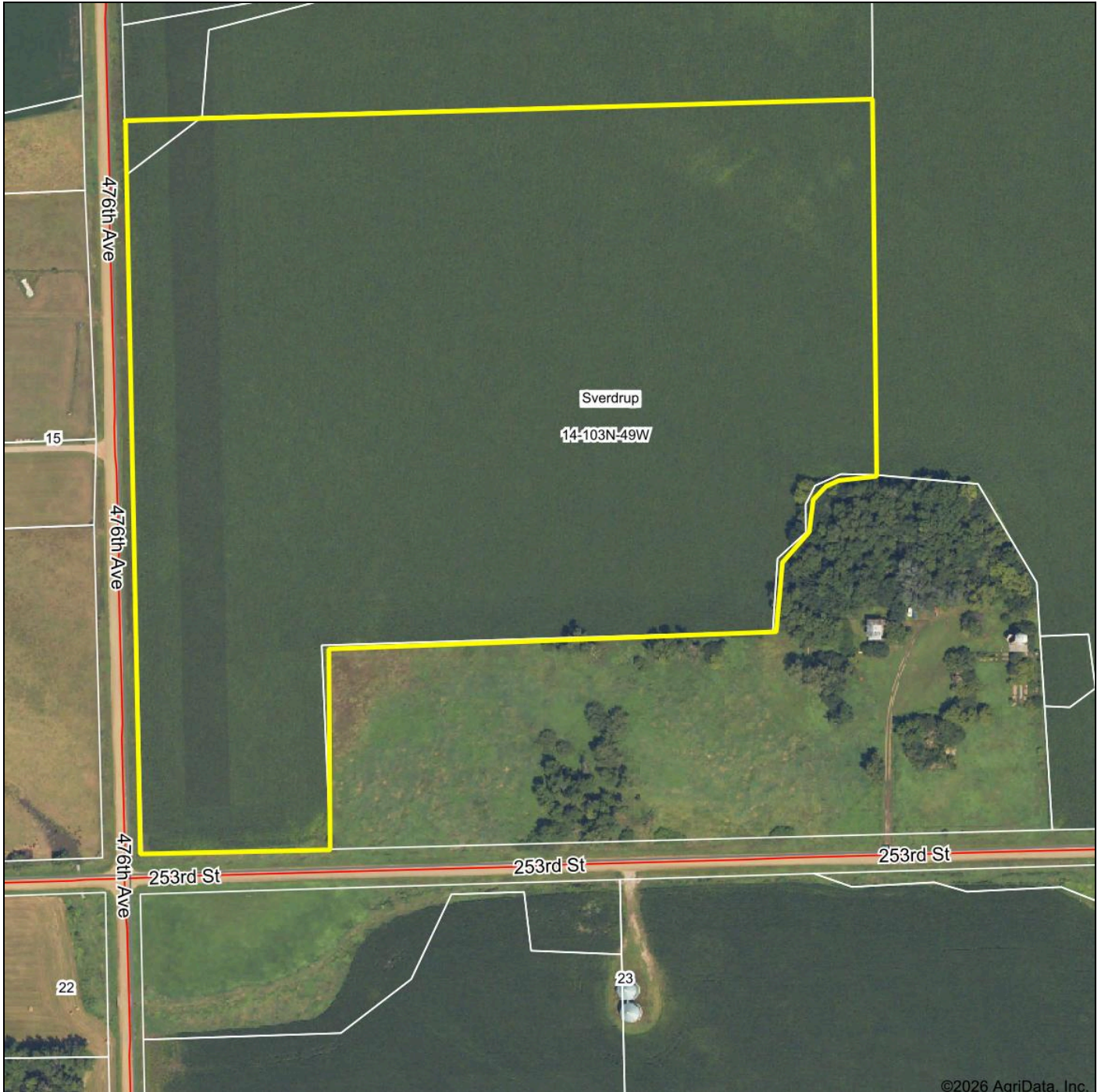


# Aerial Map



©2026 AgriData, Inc.



Maps Provided By:

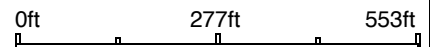


© AgriData, Inc. 2025 www.AgriDataInc.com

Field borders provided by Farm Service Agency as of 5/21/2008.

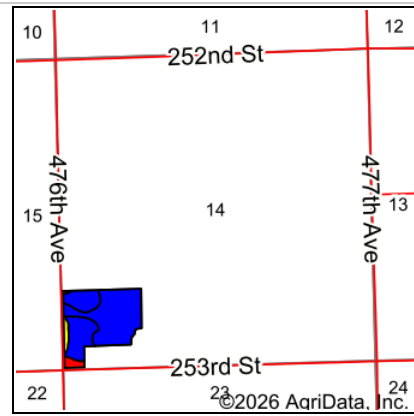
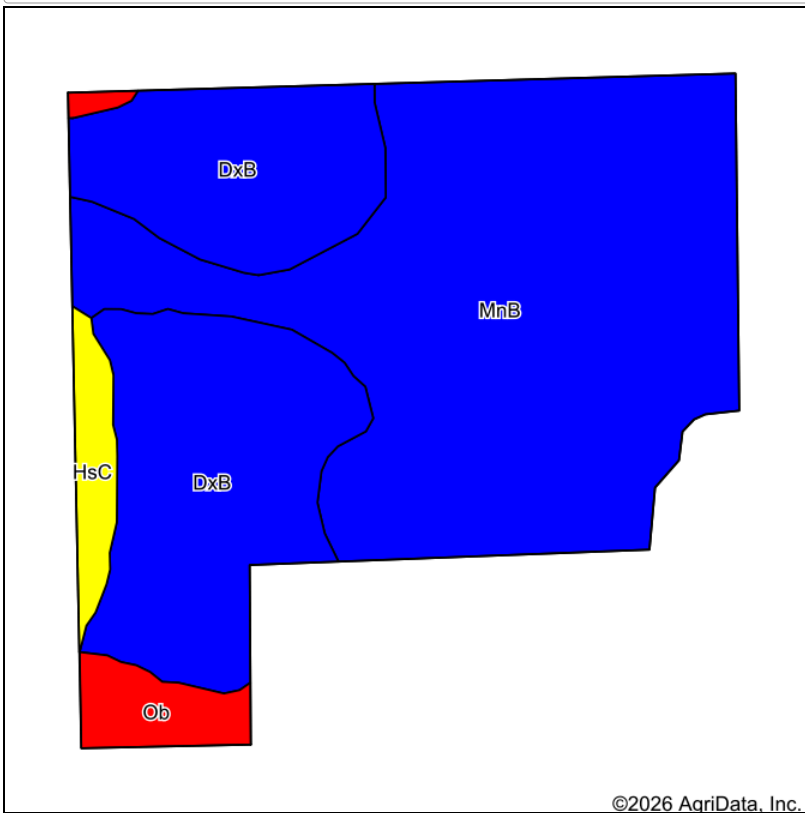
Boundary Center: 43° 43' 10.79, -96° 41' 18.8

**14-103N-49W**  
**Minnehaha County**  
**South Dakota**



5/6/2026

# Soils Map



State: **South Dakota**  
 County: **Minnehaha**  
 Location: **14-103N-49W**  
 Township: **Sverdrup**  
 Acres: **30.5**  
 Date: **5/6/2026**



**HIGH POINT**  
 LAND COMPANY

Maps Provided By:



Soils data provided by USDA and NRCS.

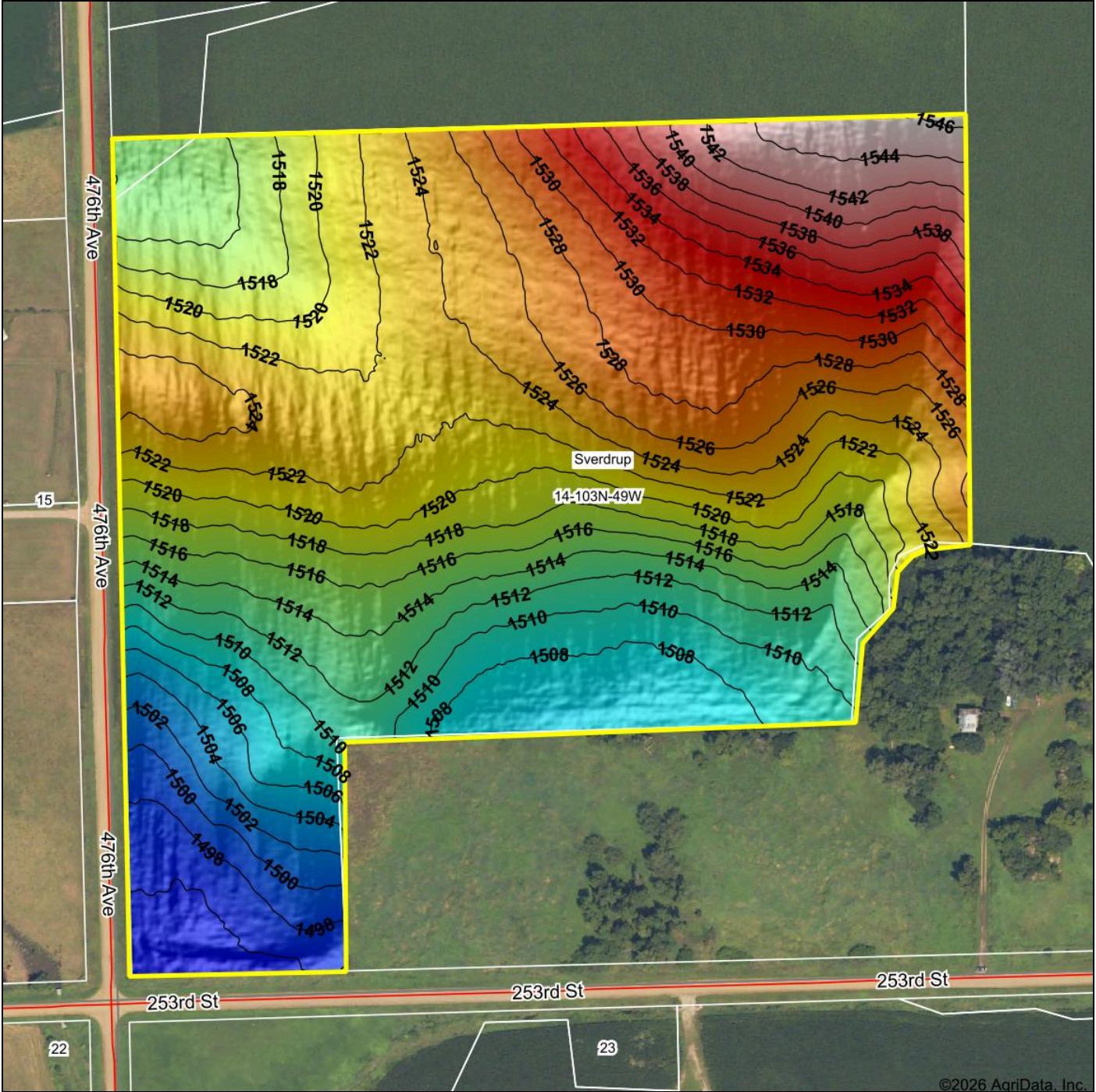
Area Symbol: SD099, Soil Area Version: 29									
Code	Soil Description	Acres	Percent of field	PI Legend	Restrictive Layer	Soil Drainage	Non-Irr Class *c	Irr Class *c	Productivity Index
MnB	Moody-Nora complex, 2 to 6 percent slopes	17.48	57.3%	<span style="color:blue">■</span>	> 6.5ft.	Well drained	Ile	IIle	88
DxB	Dobalt loam, 2 to 6 percent slopes	10.84	35.5%	<span style="color:blue">■</span>	> 6.5ft.	Well drained	Ile		87
Ob	Obert silty clay loam, 0 to 1 percent slopes	1.21	4.0%	<span style="color:red">■</span>	> 6.5ft.	Very poorly drained	Vw		29
HsC	Houdek-Shindler clay loams, 6 to 9 percent slopes	0.97	3.2%	<span style="color:yellow">■</span>	> 6.5ft.	Well drained	IIle		64
<b>Weighted Average</b>							<b>2.15</b>	<b>*-</b>	<b>84.5</b>

\*c: Using Capabilities Class Dominant Condition Aggregation Method

\*- Irr Class weighted average cannot be calculated on the current soils data due to missing data.

Soils data provided by USDA and NRCS.

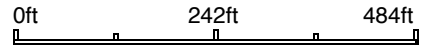
# Topography Hillshade



©2026 AgriData, Inc.



Source: USGS 1 meter dem  
 Interval(ft): 2  
 Min: 1,494.8  
 Max: 1,546.5  
 Range: 51.7  
 Average: 1,519.5  
 Standard Deviation: 10.89 ft



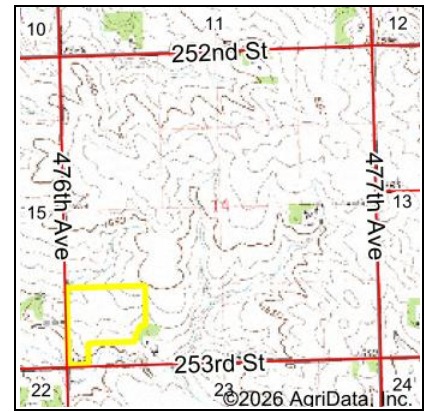
**14-103N-49W**  
**Minnehaha County**  
**South Dakota**

Boundary Center: 43° 43' 10.79, -96° 41' 18.8



© AgriData, Inc. 2025 www.AgriDataInc.com  
 Field borders provided by Farm Service Agency as of 5/21/2008.

# Wetlands Map



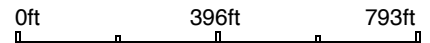
State: **South Dakota**  
 Location: **14-103N-49W**  
 County: **Minnehaha**  
 Township: **Sverdrup**  
 Date: **5/6/2026**



Maps Provided By:



© AgriData, Inc. 2025 [www.AgriDataInc.com](http://www.AgriDataInc.com)



Classification Code	Type	Acres
PEM1A	Freshwater Emergent Wetland	2.14
R4SBC	Riverine	0.03
Total Acres		2.17

Data Source: National Wetlands Inventory website. U.S. DoI, Fish and Wildlife Service, Washington, D.C. <http://www.fws.gov/wetlands/>

Field borders provided by Farm Service Agency as of 5/21/2008.