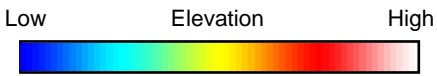
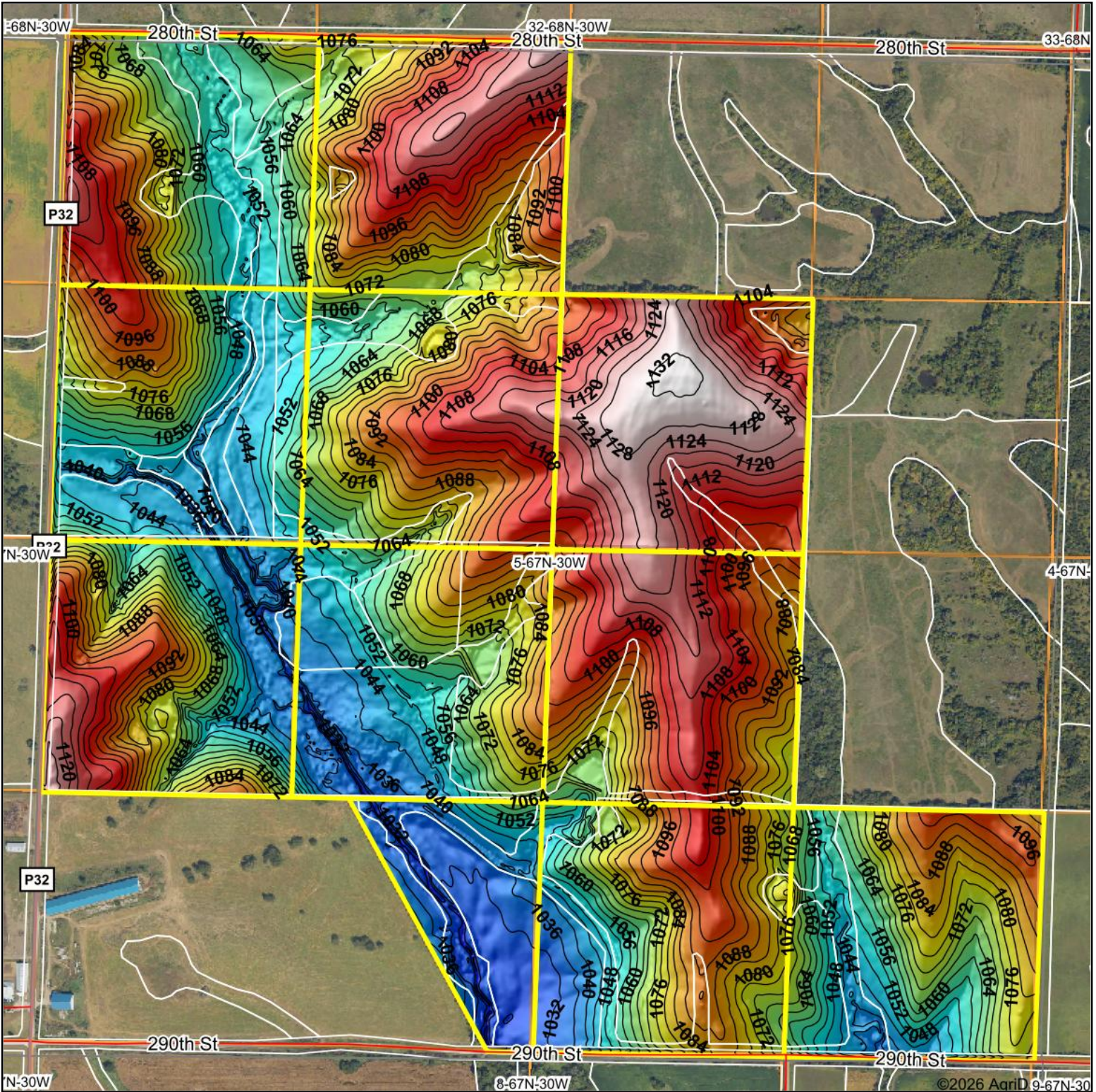
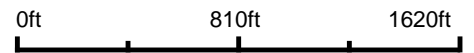


Topography Hillshade



Source: USGS 3 meter dem



Interval(ft): 4

Min: 1,020.6

Max: 1,133.0

Range: 112.4

Average: 1,077.6

Standard Deviation: 26.38 ft



5-67N-30W
Ringgold County
Iowa

Boundary Center: 40° 37' 54.72, -94° 19' 42.69



Maps Provided By:



© AgriData, Inc. 2025 www.AgriDataInc.com

Field borders provided by Farm Service Agency as of 5/21/2008.