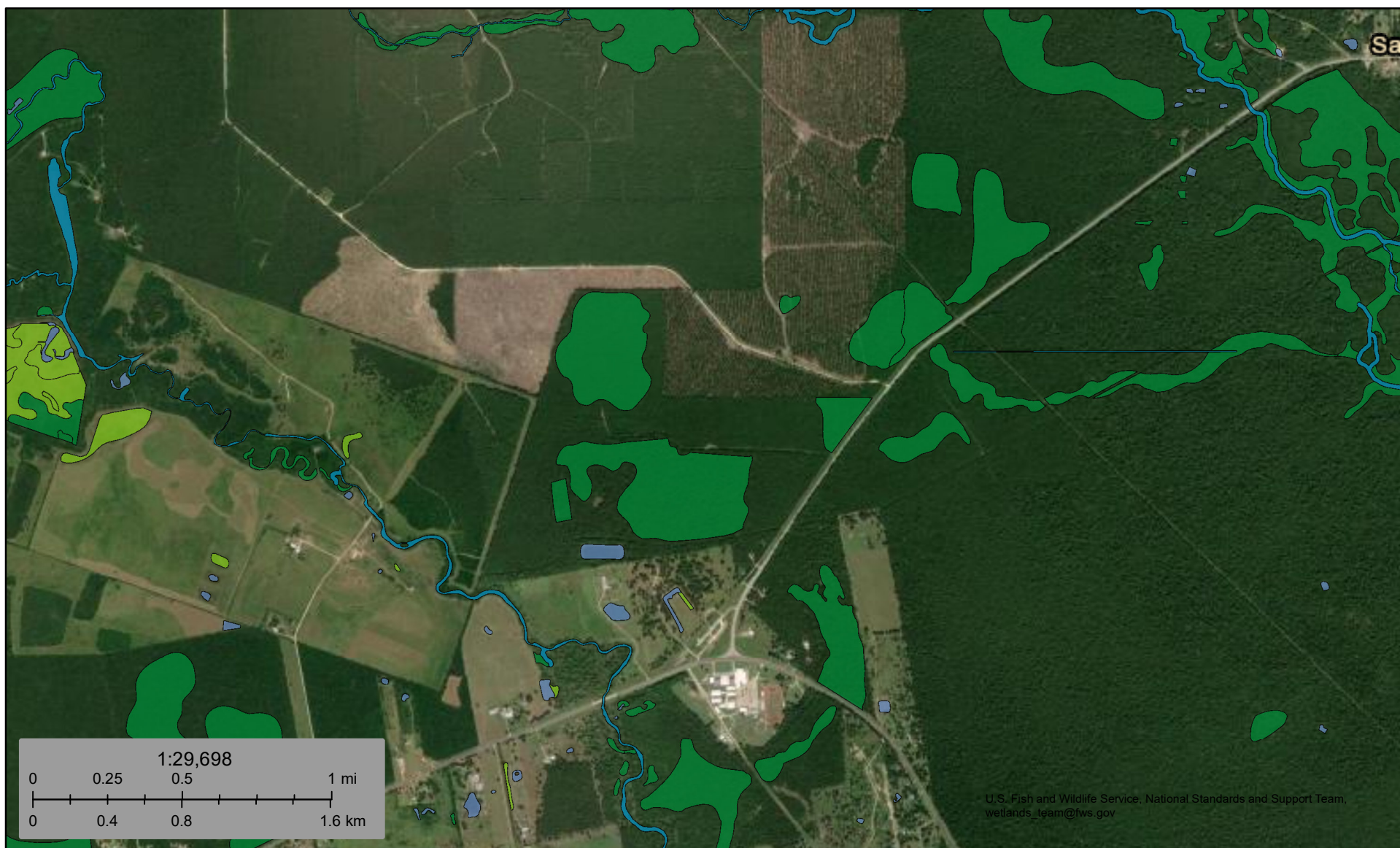




U.S. Fish and Wildlife Service

National Wetlands Inventory


282 Acres - FM 770 - Hardin Co - 03028



U.S. Fish and Wildlife Service, National Standards and Support Team,
wetlands_team@fws.gov

December 5, 2024

Wetlands

	Estuarine and Marine Deepwater		Freshwater Emergent Wetland		Lake
	Estuarine and Marine Wetland		Freshwater Forested/Shrub Wetland		Other
			Freshwater Pond		Riverine

This map is for general reference only. The US Fish and Wildlife Service is not responsible for the accuracy or currentness of the base data shown on this map. All wetlands related data should be used in accordance with the layer metadata found on the Wetlands Mapper web site.