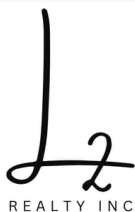
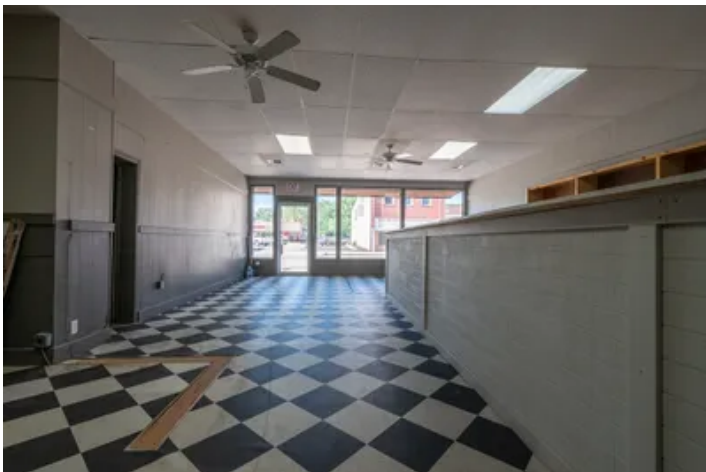


Cash Flow Buisness Opportunity
607 Main
Neodesha, KS 66757

\$64,000
0.160± Acres
Wilson County



MORE INFO ONLINE:

L2realtyinc.com

Cash Flow Buisness Opportunity
Neodesha, KS / Wilson County

SUMMARY

Address

607 Main

City, State Zip

Neodesha, KS 66757

County

Wilson County

Type

Commercial

Latitude / Longitude

37.417211 / -95.681497

Taxes (Annually)

1017

Dwelling Square Feet

1975

Acreage

0.160

Price

\$64,000

Property Website

<https://l2realtyinc.com/property/cash-flow-buisness-opportunity-wilson-kansas/64953/>



Cash Flow Buisness Opportunity Neodesha, KS / Wilson County

PROPERTY DESCRIPTION

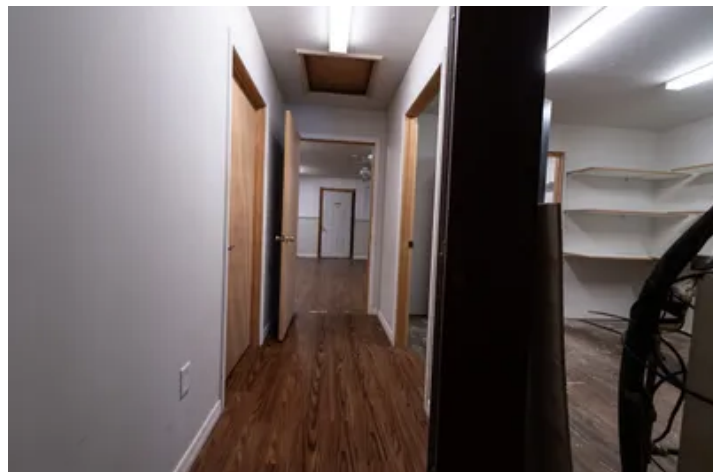
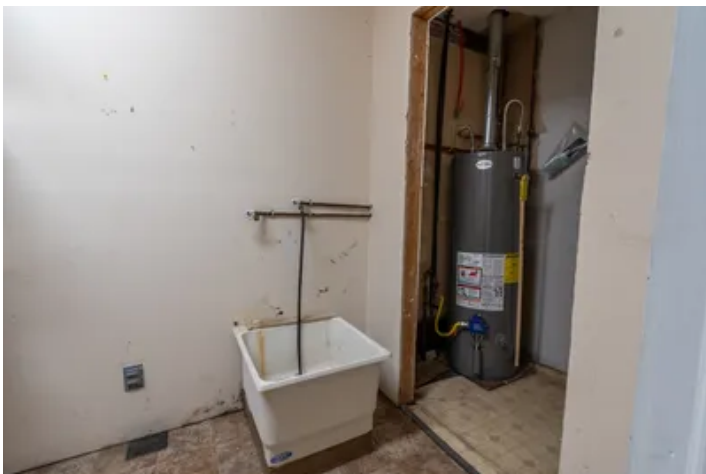
Here is a chance to own a commercial building right downtown in Neodesha! Bottom level is empty & has many possibilities! Can be used as 2 separate spaces for a huge potential for increased cash flow. Perfect location for any type of business. This property also features the possibility of 3 total apartments above the store.. 2 are already being rented. Call for your showing today!

- Open Space
- Multiple Rooms downstairs to rent out
- Different bathrooms on each side of building
- multiple storage rooms
- apartments upstairs all rented

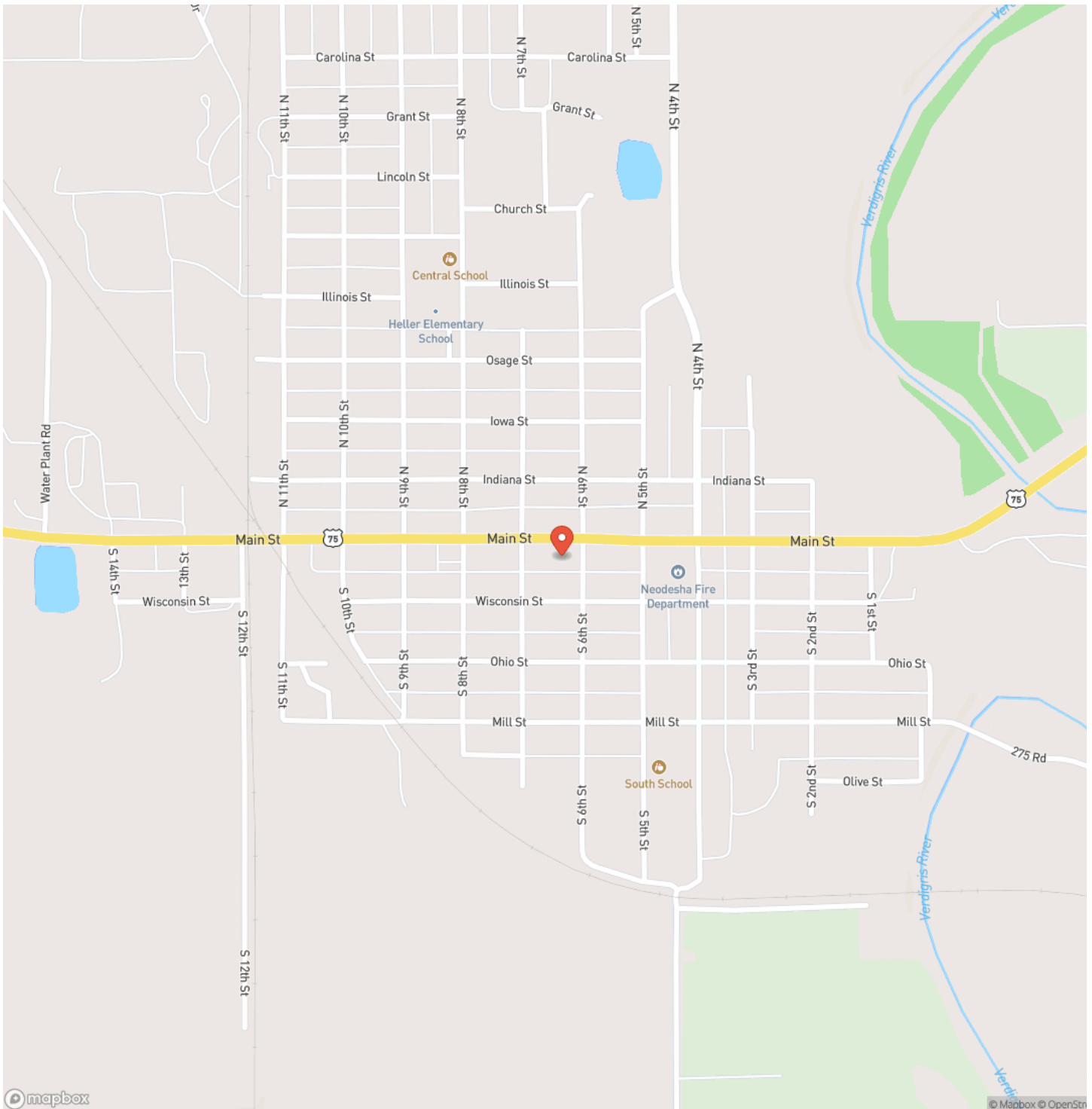
contact Angela Baker for more information! [620-330-3857](tel:620-330-3857)



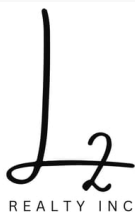
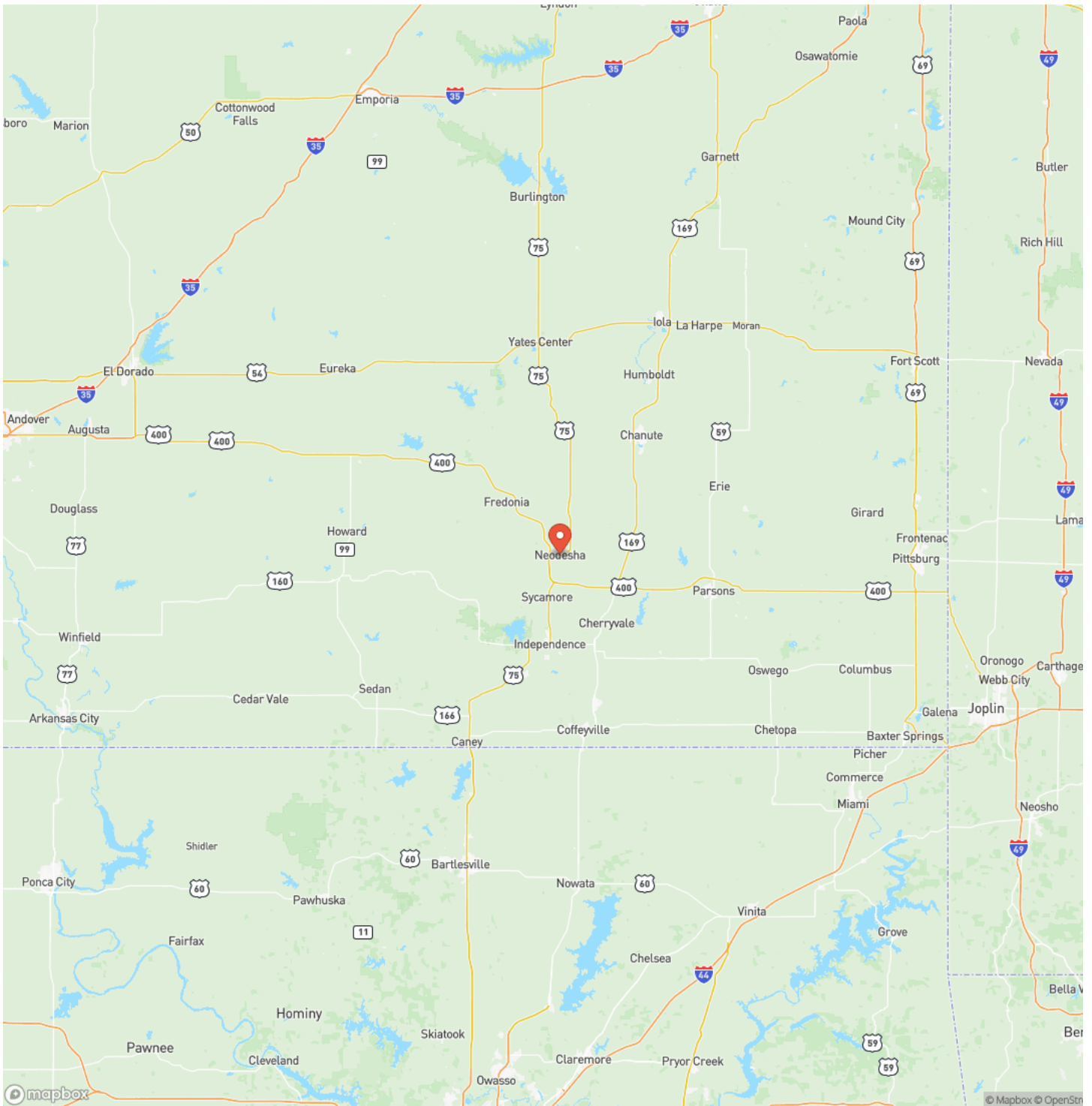
Cash Flow Buisness Opportunity
Neodesha, KS / Wilson County



Locator Map



Locator Map



Satellite Map



Cash Flow Buisness Opportunity

Neodesha, KS / Wilson County

LISTING REPRESENTATIVE

For more information contact:



Representative

Angela Baker

Mobile

(620) 330-3857

Office

(620) 577-4487

Email

abaker@L2realtyinc.com

Address

City / State / Zip

Neodesha, KS 66757

NOTES

[illegible]

MORE INFO ONLINE:

L2realtyinc.com

[illegible]

L2realtyinc.com

DISCLAIMERS

Information in this brochure is provided solely for information purposes and does not constitute an offer to sell or advertise real estate outside the states in which broker or agent licensed. The information presented has been obtained from sources deemed to be reliable, but is not guaranteed or warranted by the agent, broker, or the sellers of these properties. This offering is subject to errors, omissions, prior sale, price change, correction or withdrawal from the market without notice. All references to age, square footage, income, expenses, acreage, carrying capacity, and land classification, etc. are approximate. Prospective buyers are chargeable with and expected to conduct their own independent investigation of the information and the property and to rely only on those results. Sellers reserve the right to accept or reject any and all offers without liability to any buyer or cooperating broker.

Maps are provided for illustration purposes only, the accuracy is not warranted. Parcels on interactive maps are not adjusted to match aerial backgrounds. This information is for reference purposes only and is not a legal document. Data maps contain errors. The seller and seller's agent are making known to all potential buyers that there may be variations between the location of the existing fence lines and the legal description of the deeded property. Seller and seller's agent make no warranties with regard to the location of the fence lines in relationship to the deeded property lines, nor does the Seller make any warranties or representations with regard to the specific acreage contained within the fenced property lines. Seller is selling the property in an "as is" condition, which includes the location of the fences as they exist. Boundaries shown on the accompanying maps are approximate, based on county parcel data. The maps are not to scale. The accuracy of the maps is not guaranteed. Prospective buyers are encouraged to verify fence lines, deeded property lines and acreages using a licensed surveyor at their own expense.



L2 Realty, Inc - Land and Lifestyle Properties

4045B CR 3900

Independence, KS 67301

(620) 577-4487

L2realtyinc.com

