

Beautiful 3-Bedroom Home on 1.5 +/- Acres
1681 Ottawa Rd
Neodesha, KS 66757

\$129,999
1.600± Acres
Wilson County



Beautiful 3-Bedroom Home on 1.5 +/- Acres
Neodesha, KS / Wilson County

SUMMARY

Address

1681 Ottawa Rd

City, State Zip

Neodesha, KS 66757

County

Wilson County

Type

Residential Property

Latitude / Longitude

37.394902 / -95.70583

Dwelling Square Feet

1216

Bedrooms / Bathrooms

1 / 1

Acreage

1.600

Price

\$129,999

Property Website

<https://l2realtyinc.com/property/beautiful-3-bedroom-home-on-1-5-acres-wilson-kansas/76730/>



Beautiful 3-Bedroom Home on 1.5 +/- Acres Neodesha, KS / Wilson County

PROPERTY DESCRIPTION

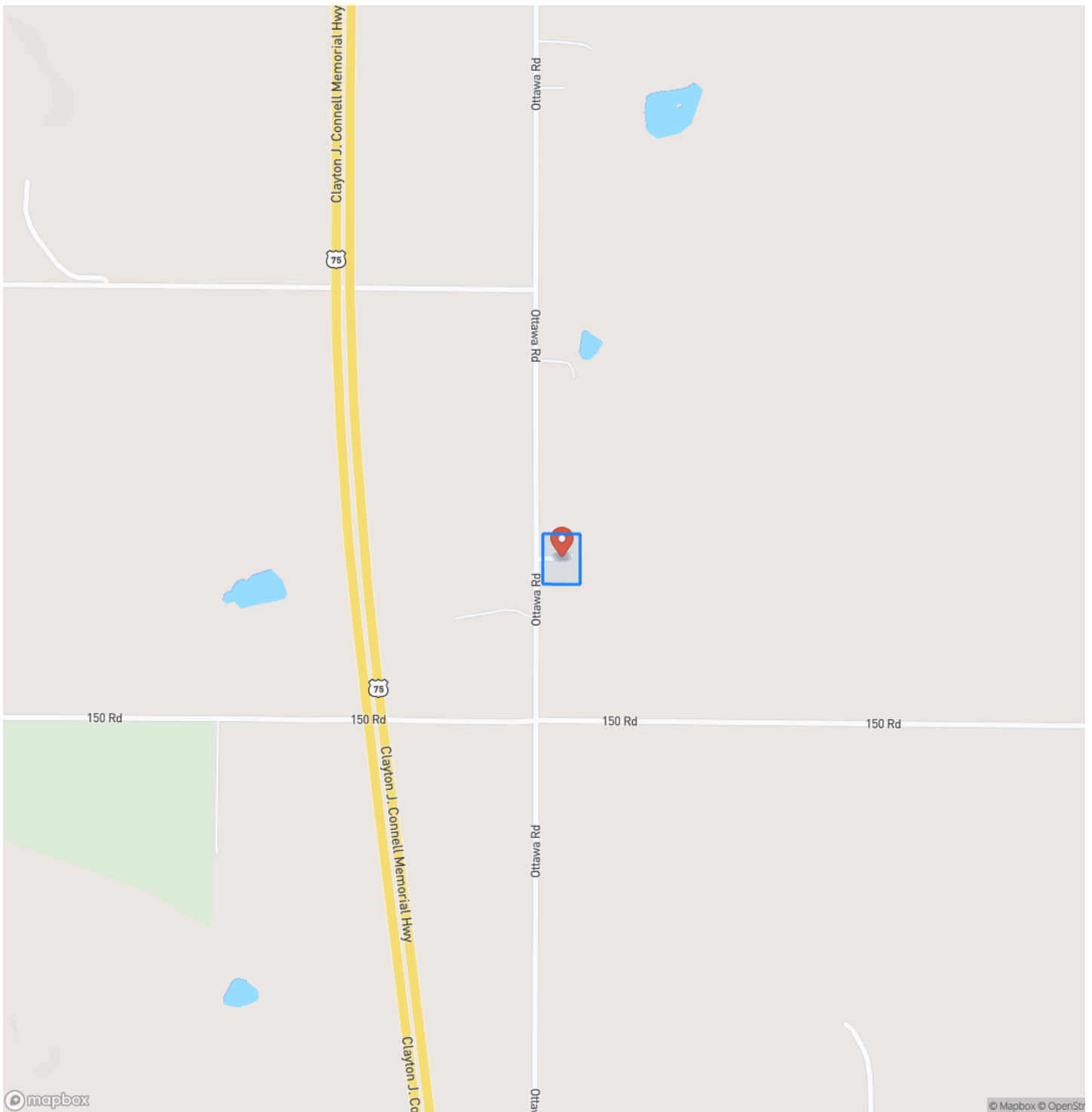
Enjoy the best of country living with this beautiful 3-bedroom, 2-bathroom manufactured home set on 1.5 acres, offering plenty of space and privacy while being just five minutes from town. Located off a paved road, this home provides easy access with the perfect balance of seclusion and convenience. Step inside to find an inviting layout, featuring a well-equipped kitchen with modern appliances, perfect for cooking and entertaining. The cozy living areas and comfortable bedrooms make this home ideal for a family. Outside, you'll love the covered front porch and the large back deck, which is already set up for a pool—great for summer gatherings and relaxation. The property also includes a 50x30 shop with electricity hooked up, perfect for a workshop, storage, or hobbies, as well as a small barn, adding even more versatility to this charming countryside home. To top it off, a small motocross track is already made up! Don't miss out on this incredible opportunity to enjoy country living with modern comforts! Schedule a showing today!



Beautiful 3-Bedroom Home on 1.5 +/- Acres
Neodesha, KS / Wilson County

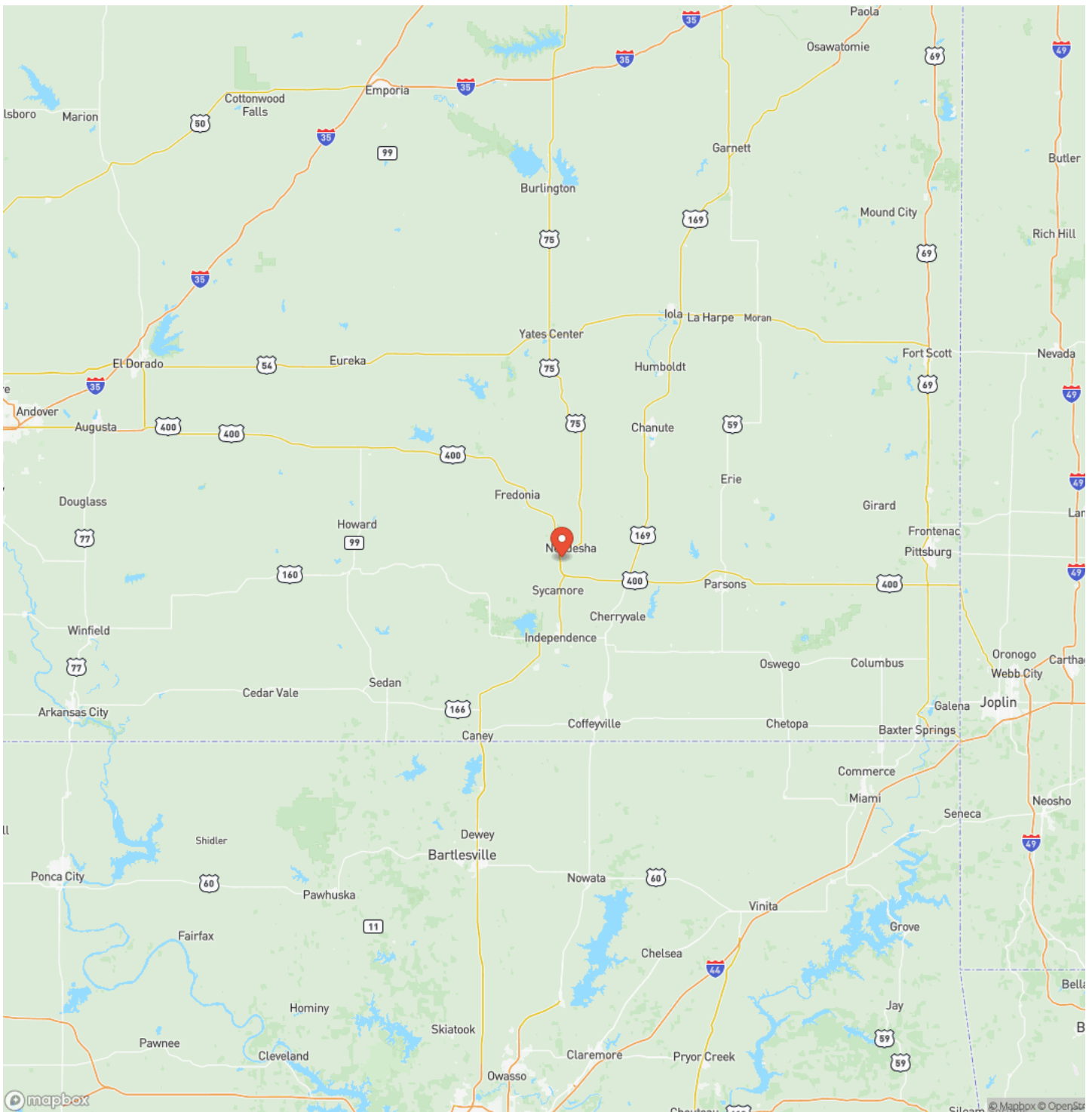


Locator Map



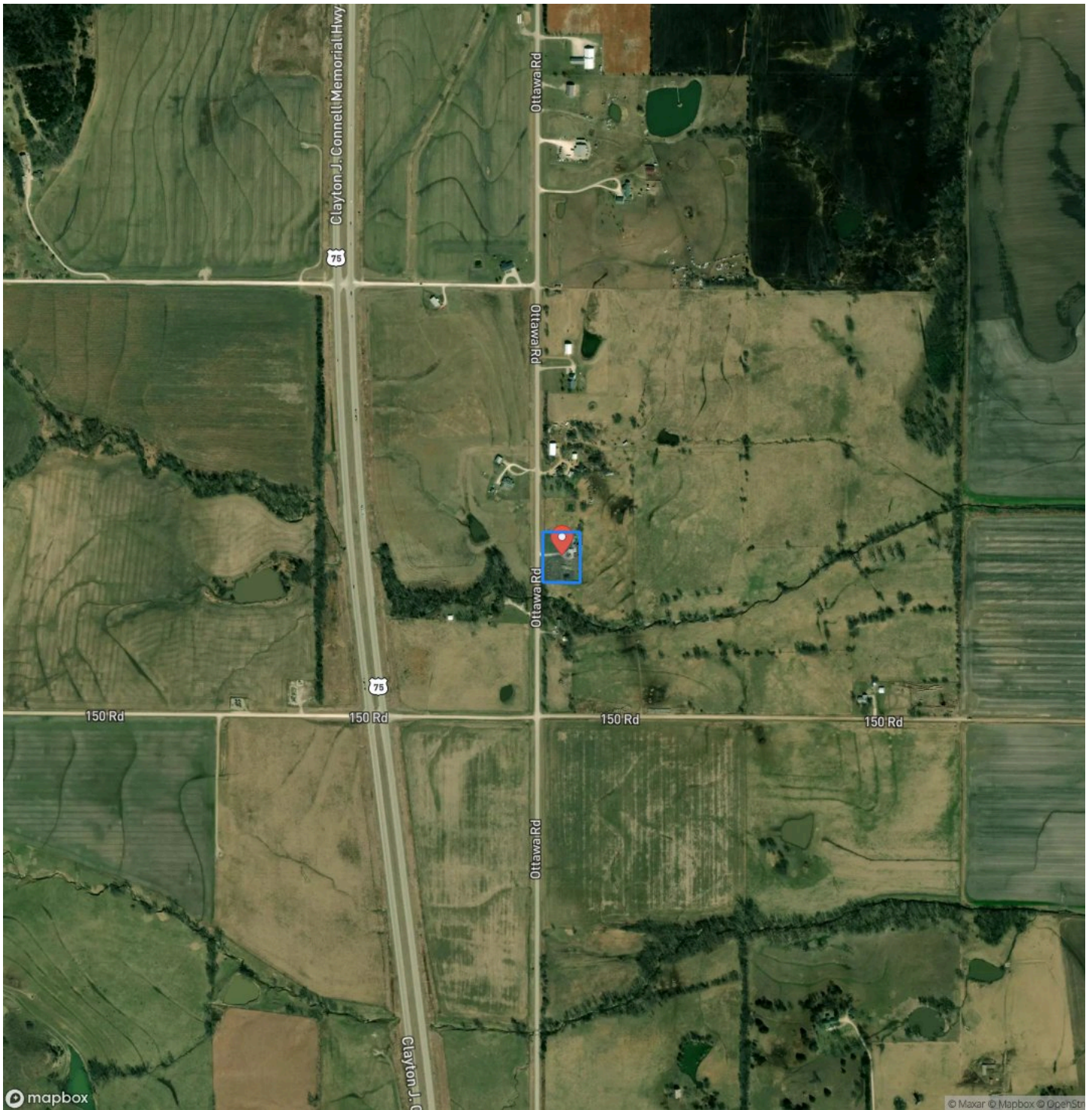
Beautiful 3-Bedroom Home on 1.5 +/- Acres
Neodesha, KS / Wilson County

Locator Map



Beautiful 3-Bedroom Home on 1.5 +/- Acres
Neodesha, KS / Wilson County

Satellite Map



Beautiful 3-Bedroom Home on 1.5 +/- Acres Neodesha, KS / Wilson County

LISTING REPRESENTATIVE

For more information contact:



Representative

Angela Baker

Mobile

(620) 330-3857

Office

(620) 577-4487

Email

abaker@L2realtyinc.com

Address

City / State / Zip

Neodesha, KS 66757

NOTES

This image shows a blank sheet of white paper with horizontal ruling lines. The lines are evenly spaced and extend across the width of the page. There are no margins, text, or other markings on the paper.

[illegible]

L2realtyinc.com

DISCLAIMERS

Information in this brochure is provided solely for information purposes and does not constitute an offer to sell or advertise real estate outside the states in which broker or agent licensed. The information presented has been obtained from sources deemed to be reliable, but is not guaranteed or warranted by the agent, broker, or the sellers of these properties. This offering is subject to errors, omissions, prior sale, price change, correction or withdrawal from the market without notice. All references to age, square footage, income, expenses, acreage, carrying capacity, and land classification, etc. are approximate. Prospective buyers are chargeable with and expected to conduct their own independent investigation of the information and the property and to rely only on those results. Sellers reserve the right to accept or reject any and all offers without liability to any buyer or cooperating broker.

Maps are provided for illustration purposes only, the accuracy is not warranted. Parcels on interactive maps are not adjusted to match aerial backgrounds. This information is for reference purposes only and is not a legal document. Data maps contain errors. The seller and seller's agent are making known to all potential buyers that there may be variations between the location of the existing fence lines and the legal description of the deeded property. Seller and seller's agent make no warranties with regard to the location of the fence lines in relationship to the deeded property lines, nor does the Seller make any warranties or representations with regard to the specific acreage contained within the fenced property lines. Seller is selling the property in an "as is" condition, which includes the location of the fences as they exist. Boundaries shown on the accompanying maps are approximate, based on county parcel data. The maps are not to scale. The accuracy of the maps is not guaranteed. Prospective buyers are encouraged to verify fence lines, deeded property lines and acreages using a licensed surveyor at their own expense.



L2 Realty, Inc - Land and Lifestyle Properties
4045B CR 3900
Independence, KS 67301
(620) 577-4487
L2realtyinc.com

