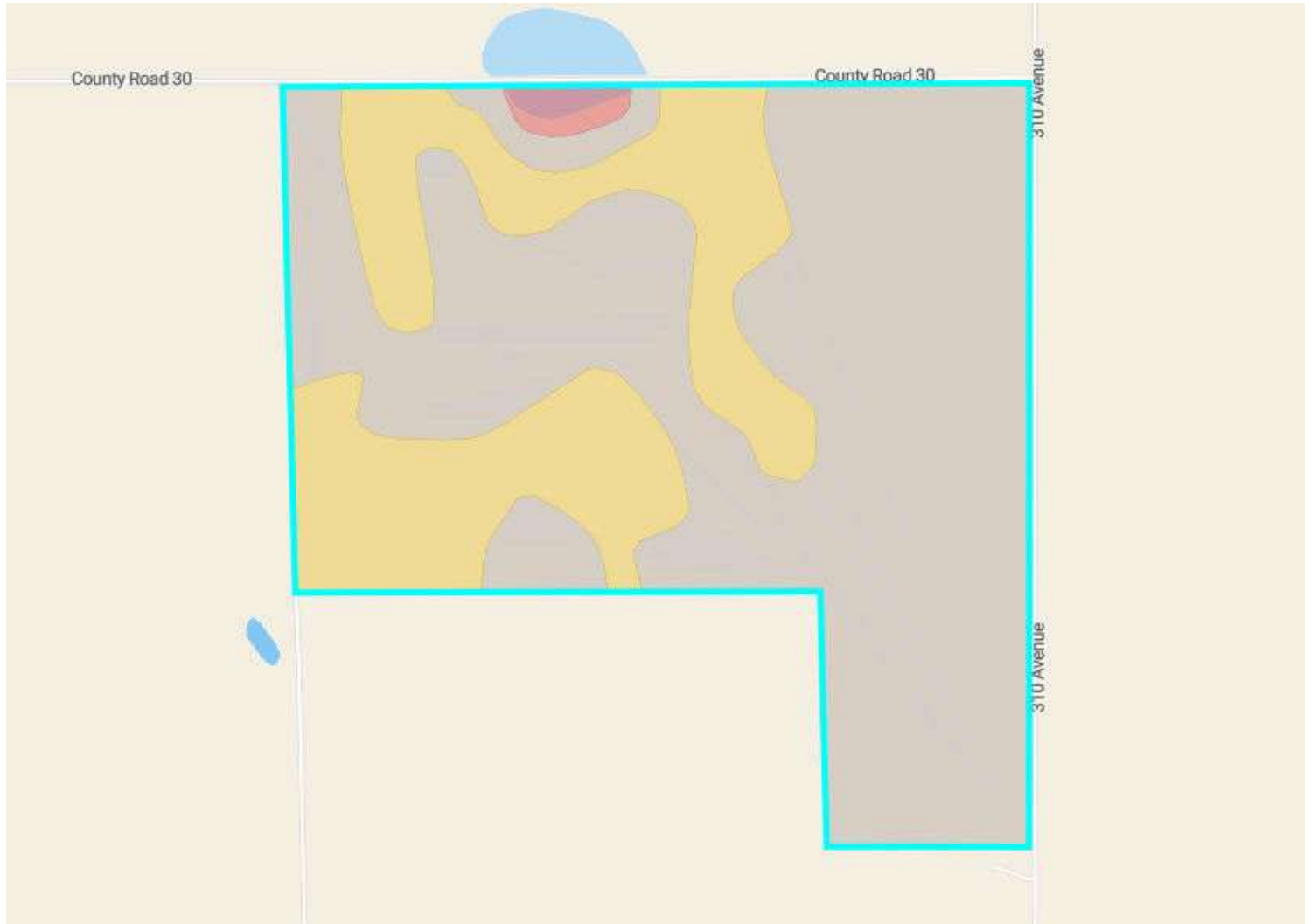


Soils

Phillips County, CO

255.0 Acres, 1 Boundary



43.2/100 NCCPI

	Code	Soil Description	% of Selection	Acres	Non-IRR Class	IRR Class	NCCPI
●	Ra	Rago and Kuma loams	69.8%	183.4	2e	2e	43.7
●	RcB	Richfield loam, 0 to 3 percent slopes	29.0%	76.2	3e	2e	43.9
●	I-W	Intermittent Water	1.2%	3.2	-	--	0