

Woodley Road Farmstead

Alabama

9 Acres

Eric Leisy

Associate Land
Broker, ALC,
GRI



Great Southern Land



Overview

Montgomery, AL • Township: Pine Level • Location: 23-13N-19E

9.36 acres, 1 selection



Overview 9.36 acres, 1 selection

, AL • Township: Pine Level • Location: 23-13N-19E Type: Parcel

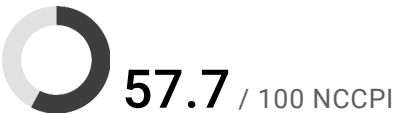
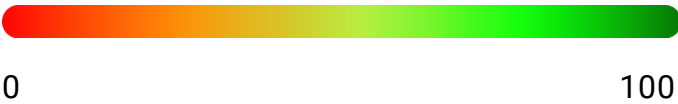
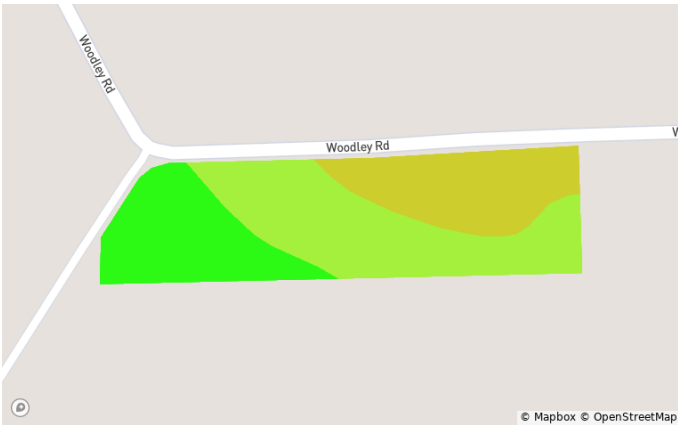
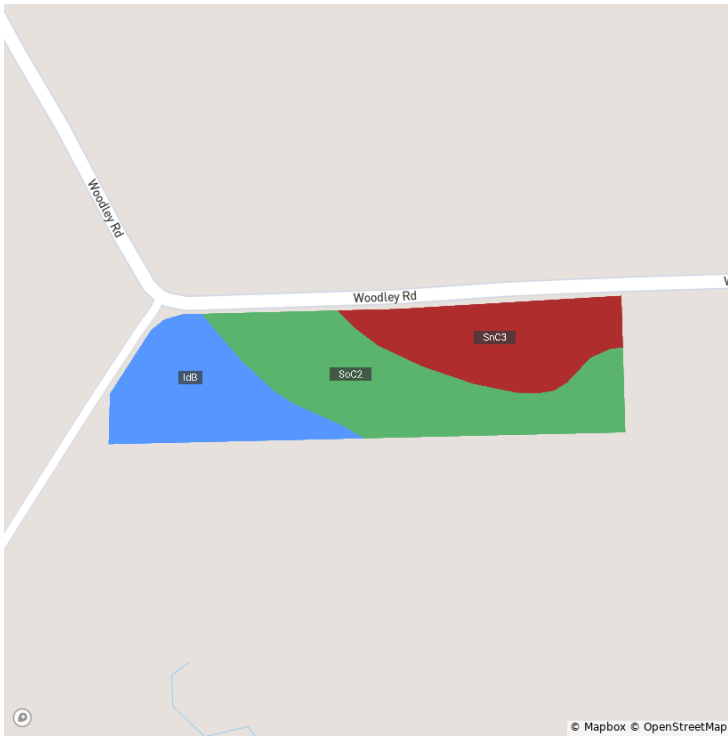


Acres	Parcel ID Number
9.36	2506230000007000

Soils

Montgomery, AL • Township: Pine Level • Location: 23-13N-19E

9.36 acres, 1 selection

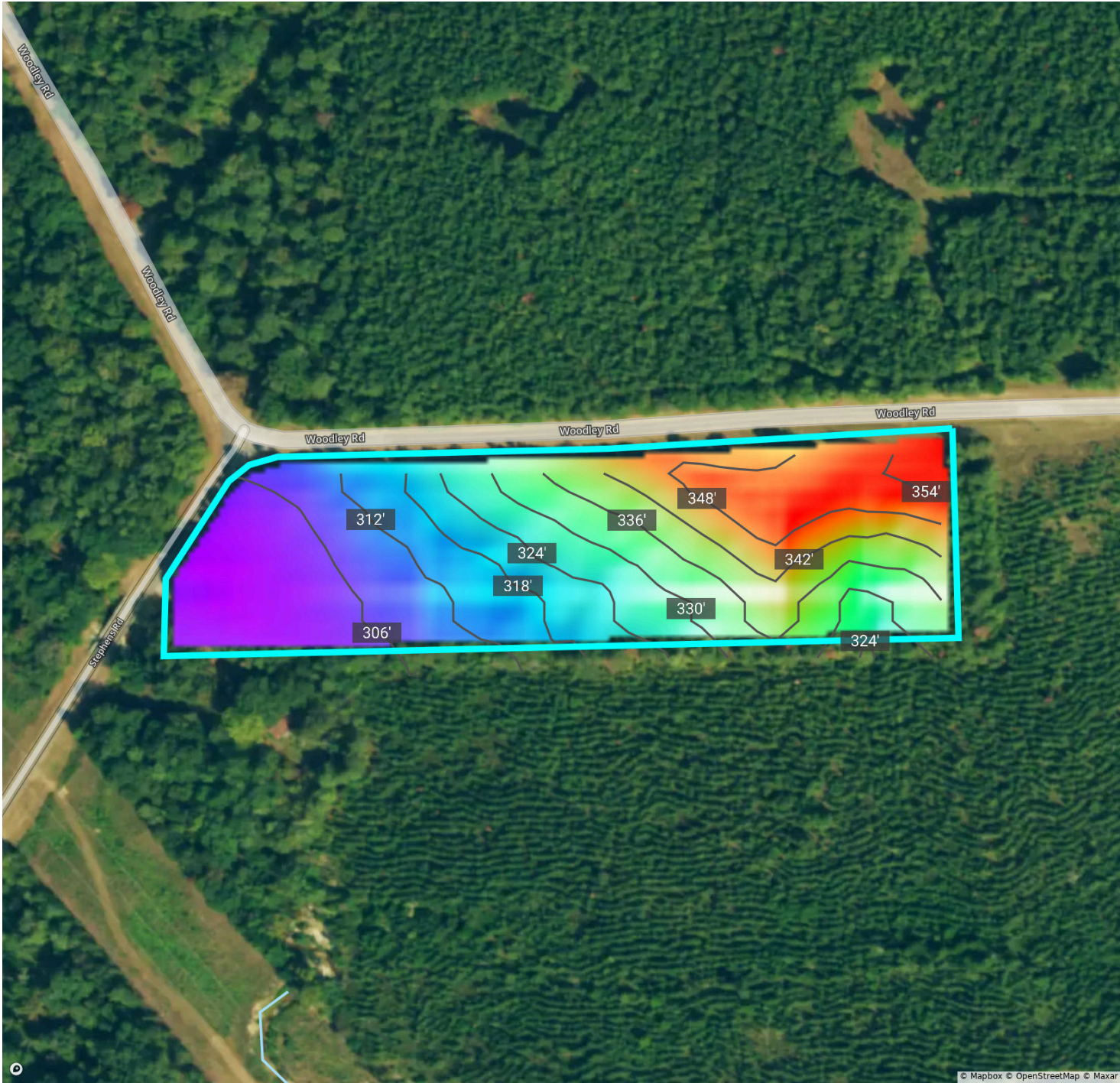


Code	Soil Description	Acres	% of Field	Non-IRR Class	IRR Class	NCCPI
● SoC2	Susquehanna fine sandy loam, eroded, very gently sloping phase	4.1	44.4%	4e	—	56.1
● IdB	Izagora fine sandy loam, very gently sloping phase	2.6	27.9%	2e	—	73.2
● SnC3	Sumter-Oktibbeha-Vaiden clays, severely eroded, very gently sloping phases	2.6	27.7%	3e	—	44.8

Elevation

Montgomery, AL • Township: Pine Level • Location: 23-13N-19E

9.36 acres, 1 selection



Source: USGS 3 Meter Dem

Interval: 6.0 ft

Range: 56.4 ft

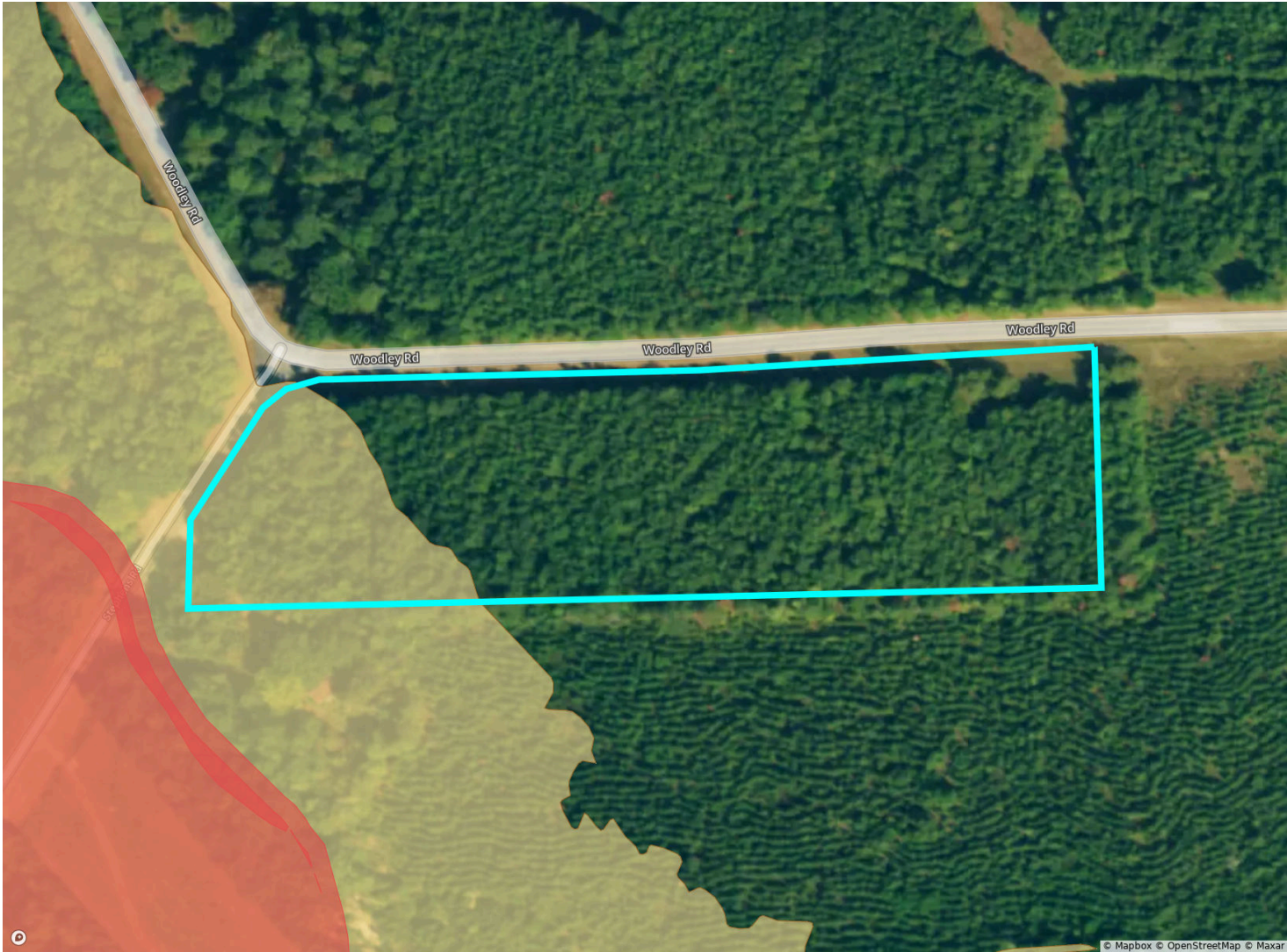
Min: 300.8

Max: 357.2

Flood (FEMA Report)

Montgomery, AL • Township: Pine Level • Location: 23-13N-19E

9.36 acres, 1 selection



Flood Hazard Zone		% of Selection	Acres
<div></div>	100 Year Flood Zone (1% annual chance of flooding)	20.0%	1.9
<div></div>	500 Year Flood Zone (0.2% annual chance of flooding)	0.0%	0.0
<div></div>	Regulatory Floodway	0.0%	0.0
<div></div>	No Flood Hazard Zone	0.0%	0.0
Wetlands		% of Selection	Acres
<div></div>	Assorted Wetlands	0.0%	0.0

FSA Overview

Montgomery, AL • Township: Pine Level • Location: 23-13N-19E

9.36 acres, 1 selection

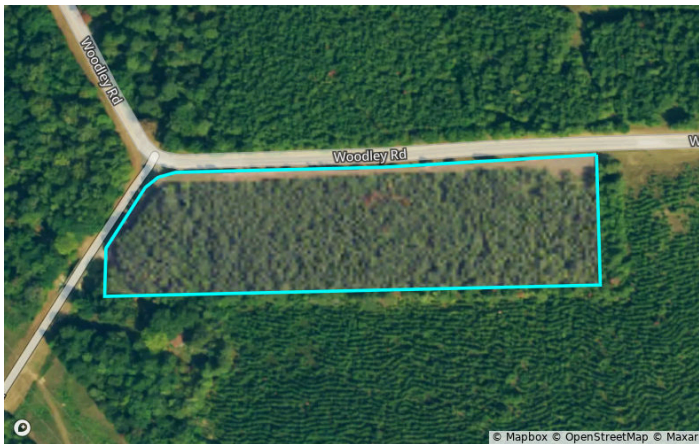


Historical Imagery

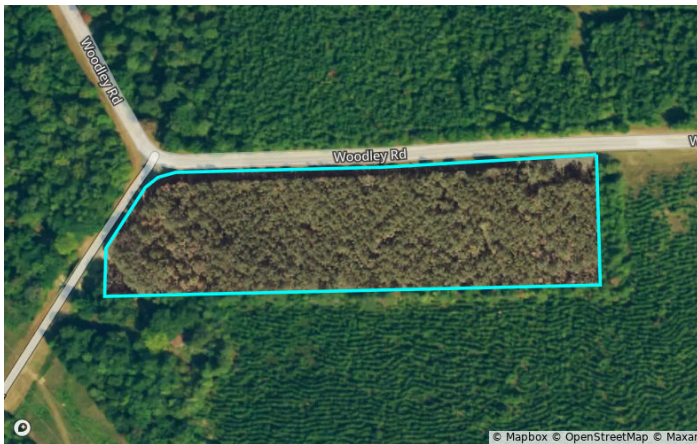
Montgomery, AL • Township: Pine Level • Location: 23-13N-19E

9.36 acres, 1 selection

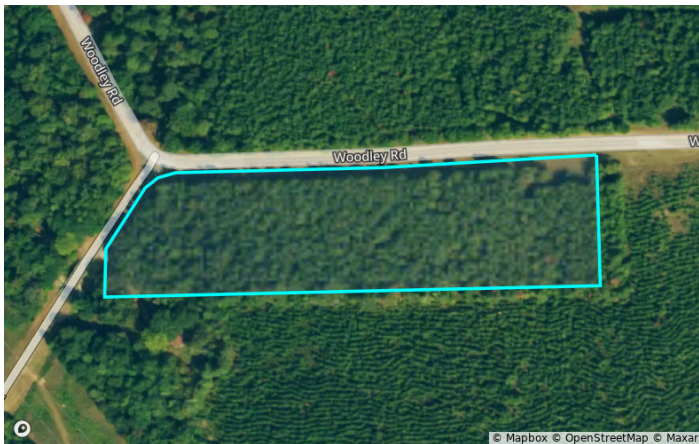
2023



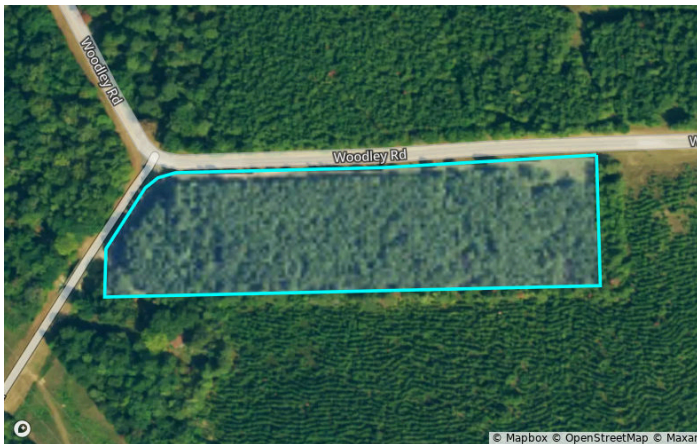
2021



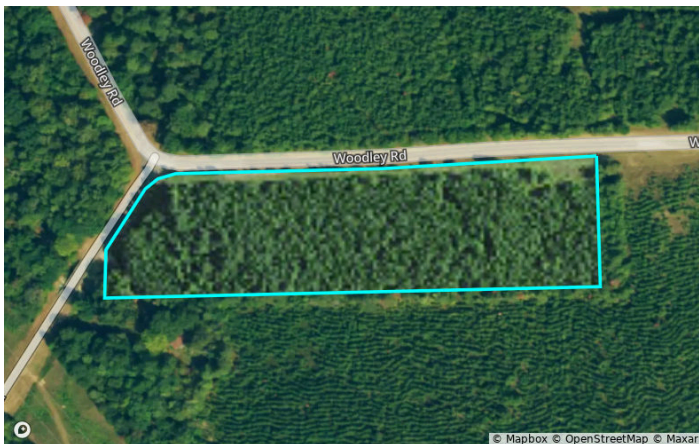
2019



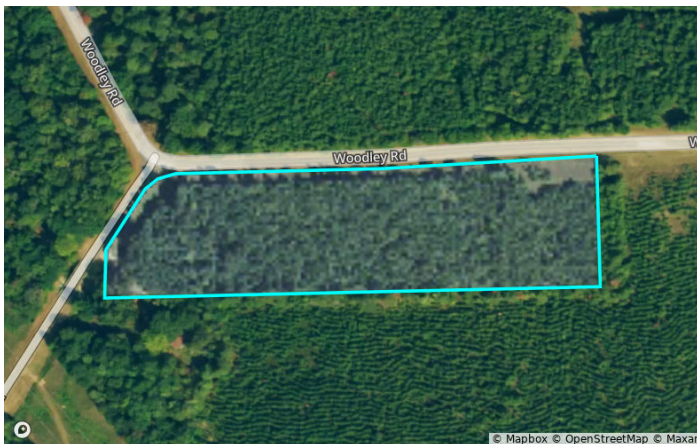
2017



2015



2013



Timber Site Index

Montgomery, AL • Township: Pine Level • Location: 23-13N-19E

9.36 acres, 1 selection

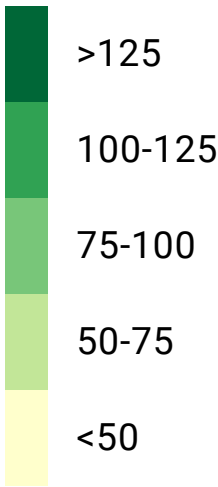


Tree Category
Evergreen

Tree Species
Loblolly Pine

Aggregate Site Index
81.35

Site Index Scale (ft)



Soil Code	Soil Description	Acres	% of Field	Site Index
SoC2	Susquehanna fine sandy loam, eroded, very gently sloping phase	4.14	44.40%	78
IdB	Izagora fine sandy loam, very gently sloping phase	2.60	27.90%	90
SnC3	Sumter-Oktibbeha-Vaiden clays, severely eroded, very gently sloping phases	2.58	27.70%	78