



**SMALLTOWN**  
HUNTING PROPERTIES  
& REAL ESTATE<sup>SM</sup>

**MILLER POINT TIMBER COMPANY, LLC**  
**COAHOMA COUNTY, MS / PHILLIPS COUNTY, AR**  
**ONE EQUITY SHARE | \$795,000**

**OFFICE (769) 888-2522 | [WWW.SMALLTOWNPROPERTIES.COM](http://WWW.SMALLTOWNPROPERTIES.COM)**

# MILLER POINT TIMBER COMPANY, LLC

## PROPERTY PROFILE

### LOCATION:

- 17 Miller Point Road Clarksdale, MS 38614
- Coahoma County, MS and Phillips County, AR
- Mississippi River Bottom
- 10± Miles NW of Clarksdale
- 68± Miles SW of Memphis, TN
- 94± Miles SE of Little Rock, AR
- 142± Miles NW of Jackson, MS
- 306± Miles NW of New Orleans, LA

### COORDINATES:

- 34.3217, -90.6574

### PROPERTY USE:

- Recreational: Everything Outdoors
- Hunting
- Weekend Getaway

### CLUB INFORMATION:

- 7,000± Acres
  - All Owned with Timber Rights
- 32 Shares Owned by 27 Members
- 2025 Annual Dues: \$7,500
  - No Debt on Club

- 40+ Wildlife Plots with Stands
  - Open to All Members
- Mature Timber, Cutover, Wildlife Plots, Sloughs
- Skinning Shed with Walk-In Cooler
- Archery, Rifle, and Skeet Shooting Ranges
- Mississippi River Frontage with Boat Ramp
- Mississippi & Arkansas Hunting Season
  - Hunting Licenses Reciprocate
- Horseshoe Lake Hunting & Fishing
- Family Oriented:
  - Kids & Wives Encouraged
- Top-Notch Hunting
  - Deer, Turkey, Ducks, Hog, and All Small Game
- Strict Deer Management for Nearly 3 Decades
- 3 to 4 Duck Holes
  - Depending on MS River Levels
- Full-time Caretaker: Stephan Potgeiter
- Wildlife Biologist: Jim Lipe (Annual Deer Survey Conducted)
- Membership Subject to Approval of Club



**MICHAEL OSWALT** | PRINCIPAL BROKER  
C: 662-719-3967 | michael@smalltownproperties.com



**FORD TRUE** | LAND SPECIALIST  
C: 662-645-1119 | ford@smalltownproperties.com

Information is believed to be accurate but not guaranteed.



# WELCOME TO MILLER POINT TIMBER COMPANY, LLC

MILLER POINT HUNTING CLUB WAS ESTABLISHED IN 1986 AND SPANS APPROXIMATELY 7,000± ACRES OF PREMIER HUNTING GROUND ALONG THE MISSISSIPPI RIVER. Despite the addition of an all-weather road system, the landscape remains largely untouched, home to towering oaks, cottonwoods, and pecans. The club offers gated access from the Mississippi side of the river levee and holds land in both Mississippi and Arkansas. Members here take immense pride in the land and the tradition of responsible stewardship. With top-notch facilities and year-round opportunities for recreation, Miller Point is a place where you'll gain not only incredible hunting and outdoor access but also 27 new friends the day you join.

If you've been searching for an equity share in one of the South's finest hunting clubs, Miller Point Hunting Club needs to be on the list.

**Contact Ford True or Michael Oswalt  
today for your private showing!**



**MICHAEL OSWALT** | PRINCIPAL BROKER  
C: 662-719-3967 | [michael@smalltownproperties.com](mailto:michael@smalltownproperties.com)



**FORD TRUE** | LAND SPECIALIST  
C: 662-645-1119 | [ford@smalltownproperties.com](mailto:ford@smalltownproperties.com)

Information is believed to be accurate but not guaranteed.





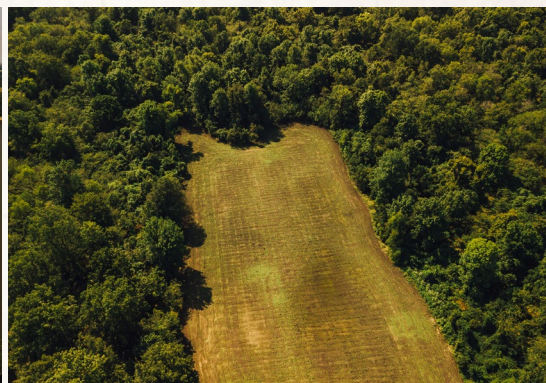
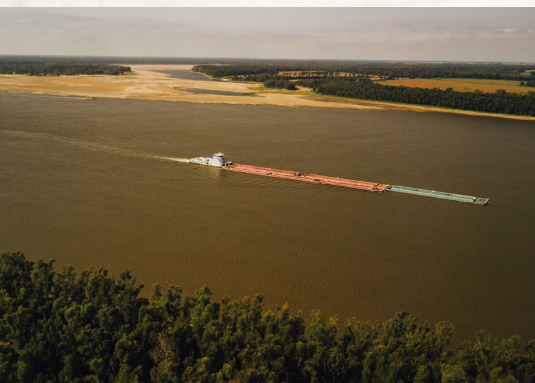
**MICHAEL OSWALT** | PRINCIPAL BROKER  
C: 662-719-3967 | michael@smalltownproperties.com

*Information is believed to be accurate but not guaranteed.*

**FORD TRUE** | LAND SPECIALIST  
C: 662-645-1119 | ford@smalltownproperties.com

4848 Main St. - Flora, MS 39071 | O: 769-888-2522 | smalltownproperties.com





**MICHAEL OSWALT** | PRINCIPAL BROKER  
C: 662-719-3967 | michael@smalltownproperties.com

**FORD TRUE** | LAND SPECIALIST  
C: 662-645-1119 | ford@smalltownproperties.com

Information is believed to be accurate but not guaranteed.





**MICHAEL OSWALT** | PRINCIPAL BROKER  
C: 662-719-3967 | michael@smalltownproperties.com

**FORD TRUE** | LAND SPECIALIST  
C: 662-645-1119 | ford@smalltownproperties.com

Information is believed to be accurate but not guaranteed.





**MICHAEL OSWALT** | PRINCIPAL BROKER  
C: 662-719-3967 | michael@smalltownproperties.com

**FORD TRUE** | LAND SPECIALIST  
C: 662-645-1119 | ford@smalltownproperties.com

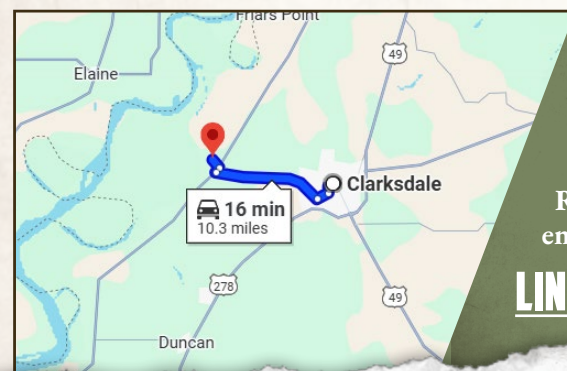
Information is believed to be accurate but not guaranteed.



land id. LINK

CARTER RD

OLD RIVER RD



Directions From Clarksdale, MS:  
Travel 6.1 miles on Oakhurst Stovall Road. Continue over Highway 1 on Old River Road. Turn right on Carter Road and proceed 0.3 miles to the entrance on the right.

[LINK TO GOOGLE MAP DIRECTIONS](#)



**MICHAEL OSWALT** | PRINCIPAL BROKER  
C: 662-719-3967 | michael@smalltownproperties.com



**SMALLTOWN**  
HUNTING PROPERTIES  
& REAL ESTATE<sup>SM</sup>

Information is believed to be accurate but not guaranteed.



**FORD TRUE** | LAND SPECIALIST  
C: 662-645-1119 | ford@smalltownproperties.com