

**6.79± ACRES**  
**LAUDERDALE COUNTY, MS**  
**\$65,000**



**SMALLTOWN**  
HUNTING PROPERTIES  
& REAL ESTATE

OFFICE (769) 888-2522 | [WWW.SMALLTOWNPROPERTIES.COM](http://WWW.SMALLTOWNPROPERTIES.COM)

# THE LAUDERDALE 6.79

## PROPERTY PROFILE

### LOCATION:

- Walker Bottom Road  
Meridian, MS 39301
- Lauderdale County
- 1.5± Miles E of  
Clarkdale High School
- 11± Miles S of Meridian

### COORDINATES:

- 32.2288, -88.6789

### TAX INFORMATION:

- TBD

### PROPERTY USE:

- Potential Home/Cabin Site
- Recreational

### PROPERTY INFORMATION:

- 6.79± Surveyed Acres
- 735'± Paved Road Frontage
- Cleared Homesite
- Live Creek
- Mixed Timber
- Clarkdale School District
- Utilities Available



**SMALLTOWN**  
HUNTING PROPERTIES  
& REAL ESTATE<sup>SM</sup>

### HUNTER MARLOW

LAND SPECIALIST

REGISTERED FORESTER #2879

C: 601-701-3088

O: 769-888-2522

[hmarlow@smalltownproperties.com](mailto:hmarlow@smalltownproperties.com)

4848 Main St. - Flora, MS 39071

[smalltownproperties.com](http://smalltownproperties.com)

Information is believed to be accurate but not guaranteed.

# WELCOME TO THE LAUDERDALE 6.79

IF YOU'VE BEEN PATIENTLY WAITING FOR AN OPPORTUNITY TO BUILD IN THE SOUGHT-AFTER CLARKDALE SCHOOL DISTRICT IN LAUDERDALE COUNTY, MISSISSIPPI, THIS ONE IS FOR YOU! Located on 6.79± surveyed acres on Walker Bottom Road in Meridian, only 1.5± miles from the high school, this property features convenience, seclusion, and building opportunity in an area that values community! The Lauderdale 6.79 features a cleared homesite with ample road frontage, making it easy to envision your new home's layout. Available utilities at the road make for a seamless transition into the early stages of construction.



**SMALLTOWN**  
HUNTING PROPERTIES  
& REAL ESTATE<sup>SM</sup>

**HUNTER MARLOW**

LAND SPECIALIST  
REGISTERED FORESTER #2879

C: 601-701-3088

O: 769-888-2522

[hmarlow@smalltownproperties.com](mailto:hmarlow@smalltownproperties.com)

4848 Main St. - Flora, MS 39071

[smalltownproperties.com](http://smalltownproperties.com)

Information is believed to be accurate but not guaranteed.

# MORE ABOUT THE LAUDERDALE 6.79

To complement the homesite's natural beauty, the remainder of the property features a mix of pine timber, a live-flowing creek, and mature hardwoods. This added bit of acreage provides the opportunity to develop and add the shop you've always wanted or simply a place to enjoy the creek and the natural feel associated with being in the woods.

The ability to be in a private setting, stretch out from your neighbors, and establish HOME is HERE. If you have been seeking the perfect opportunity to put roots down in an exceptional community and school district, the Lauderdale 6.79 deserves your attention.

**Call Hunter Marlow today for a private showing  
and experience #TheSmallTownWay!**



**SMALLTOWN**  
HUNTING PROPERTIES  
& REAL ESTATE<sup>SM</sup>

**HUNTER MARLOW**

*LAND SPECIALIST*

*REGISTERED FORESTER #2879*

**C: 601-701-3088**

**O: 769-888-2522**

**hmarlow@smalltownproperties.com**

**4848 Main St. - Flora, MS 39071**

**smalltownproperties.com**

Information is believed to be accurate but not guaranteed.

6.79± ACRES

LAUDERDALE COUNTY, MISSISSIPPI



**SMALLTOWN**  
HUNTING PROPERTIES  
& REAL ESTATE<sup>SM</sup>

**HUNTER MARLOW**

LAND SPECIALIST

REGISTERED FORESTER #2879

C: 601-701-3088

O: 769-888-2522

[hmarlow@smalltownproperties.com](mailto:hmarlow@smalltownproperties.com)

4848 Main St. - Flora, MS 39071

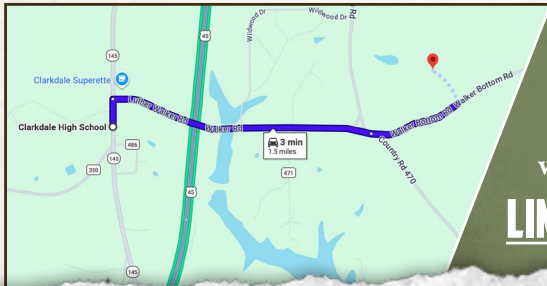
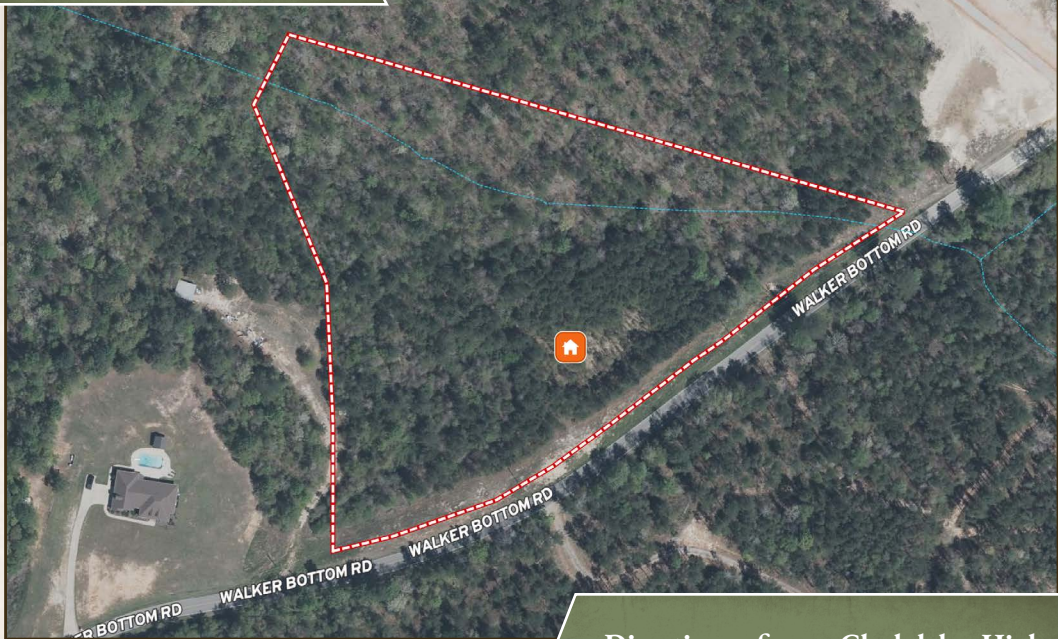
[smalltownproperties.com](http://smalltownproperties.com)

Information is believed to be accurate but not guaranteed.

6.79± ACRES

LAUDERDALE COUNTY, MISSISSIPPI

land **id.** LINK



Directions from Clarkdale High School in Meridian, MS: Travel on Luther Walker Road for 1 mile. Continue onto Walker Bottom Road, proceed for 0.4 miles, and the property will be on the left.

**LINK TO GOOGLE MAP DIRECTIONS**



**SMALLTOWN**  
HUNTING PROPERTIES  
& REAL ESTATE<sup>SM</sup>

**HUNTER MARLOW**

LAND SPECIALIST  
REGISTERED FORESTER #2879

C: 601-701-3088

O: 769-888-2522

hmarlow@smalltownproperties.com

4848 Main St. - Flora, MS 39071

smalltownproperties.com

Information is believed to be accurate but not guaranteed.