



SMALLTOWN
HUNTING PROPERTIES
& REAL ESTATESM

210 NORTH GEORGE WALLACE DRIVE
TROY | PIKE COUNTY, AL
\$459,000



OFFICE (334) 535-0242 | WWW.SMALLTOWNPROPERTIES.COM

210 NORTH GEORGE WALLACE DRIVE

PROPERTY PROFILE

LOCATION:

- 210 North George Wallace Drive
Troy, AL 36081
- Crow Hill Neighborhood
- Pike County
- 0.5± Miles E of Charles
Henderson Middle School
- 0.6± Miles N of Charles
Henderson High School
- 1± Mile NE of Troy University

COORDINATES:

- 31.8100, -85.9483

PROPERTY USE:

- Residential

TAX INFORMATION:

- 2025 Taxes: \$998.88

PROPERTY INFORMATION:

- 0.52± Acre Lot
- 3,532± SqFt Brick Home
- 4 Bedrooms/3.5 Baths
- Open Floor Plan
- Two Story
- Sun Room
- Storage Room
- Hardwood Floors
- Granite Countertops
- New HVAC
- Smart Thermostat
- Security System
- 2-Vehicle Carport
- Multi-Level Decks



SMALLTOWN
HUNTING PROPERTIES
& REAL ESTATESM

JASON PERDUE

LAND SPECIALIST

C: 334-304-2711

O: 334-535-0242

jperdue@smalltownproperties.com

215 E Sixth St. - Luverne, AL 36049

smalltownproperties.com

Information is believed to be accurate but not guaranteed.

WELCOME TO 210 NORTH GEORGE WALLACE DRIVE

WELCOME TO 210 NORTH GEORGE WALLACE DRIVE IN TROY, ALABAMA! Located in Pike County in the Crow Hill neighborhood, this stately four-bedroom and three-and-a-half-bathroom brick home sits beautifully on a generous 0.52± acre lot. Boasting 3,532± square feet of thoughtfully designed living space, the home features a highly desirable layout with the primary suite and an additional half bath downstairs, while three spacious bedrooms and two full baths occupy the second level.

The heart of the home is a massive open-concept area where the den, living room, dining room, and kitchen flow seamlessly together—perfect for daily living and large gatherings. Just off this central space, a bright sunroom offers a peaceful retreat. Elegant classic detailing runs throughout the home, highlighted by beautiful wainscoting with beadboard and a timeless chair rail.



CLICK HERE TO TAKE A VIRTUAL TOUR



SMALLTOWN
HUNTING PROPERTIES
& REAL ESTATESM

JASON PERDUE

LAND SPECIALIST

C: 334-304-2711

O: 334-535-0242

jperdue@smalltownproperties.com

215 E Sixth St. - Luverne, AL 36049

smalltownproperties.com

Information is believed to be accurate but not guaranteed.

MORE ABOUT 210 NORTH GEORGE WALLACE DRIVE

Major functional upgrades offer complete peace of mind, including two brand-new central air units (both upstairs and downstairs replaced in 2026) paired with smart thermostats on both levels for maximum energy efficiency. The exterior features a welcoming front porch and an expansive multi-level rear deck made for outdoor entertainment. Additional amenities include a two-vehicle carport with an attached storage room and a full security system. Don't miss this rare find in one of Troy's most desirable neighborhoods.

Contact Jason Perdue today to schedule a private showing and make 210 North George Wallace Drive your new address.



SMALLTOWN
HUNTING PROPERTIES
& REAL ESTATESM

JASON PERDUE

LAND SPECIALIST

C: 334-304-2711

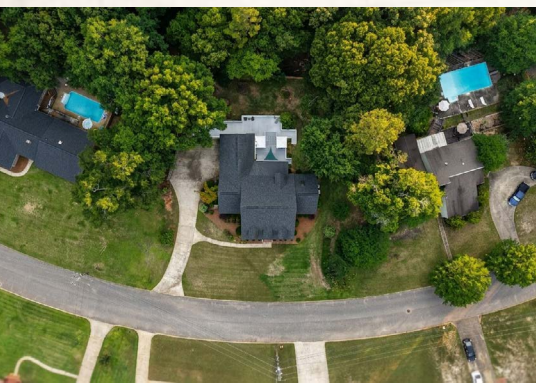
O: 334-535-0242

jperdue@smalltownproperties.com

215 E Sixth St. - Luverne, AL 36049

smalltownproperties.com

Information is believed to be accurate but not guaranteed.



SMALLTOWN

HUNTING PROPERTIES
& REAL ESTATESM

JASON PERDUE

LAND SPECIALIST

C: 334-304-2711

O: 334-535-0242

jperdue@smalltownproperties.com

215 E Sixth St. - Luverne, AL 36049

smalltownproperties.com

Information is believed to be accurate but not guaranteed.



SMALLTOWN HUNTING PROPERTIES & REAL ESTATESM

JASON PERDUE

LAND SPECIALIST

C: 334-304-2711

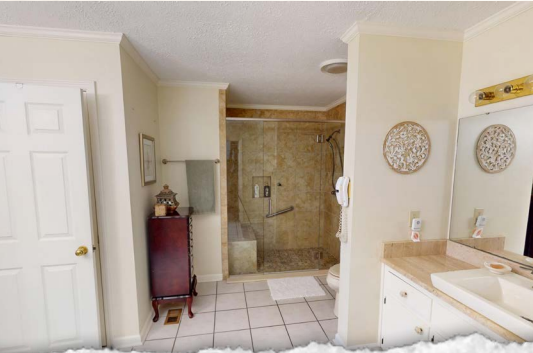
O: 334-535-0242

jperdue@smalltownproperties.com

215 E Sixth St. - Luverne, AL 36049

smalltownproperties.com

Information is believed to be accurate but not guaranteed.



SMALLTOWN

HUNTING PROPERTIES
& REAL ESTATESM

JASON PERDUE

LAND SPECIALIST

C: 334-304-2711

O: 334-535-0242

jperdue@smalltownproperties.com

215 E Sixth St. - Luverne, AL 36049

smalltownproperties.com

Information is believed to be accurate but not guaranteed.



SMALLTOWN
 HUNTING PROPERTIES
 & REAL ESTATESM

JASON PERDUE

LAND SPECIALIST

C: 334-304-2711

O: 334-535-0242

jperdue@smalltownproperties.com

215 E Sixth St. - Luverne, AL 36049

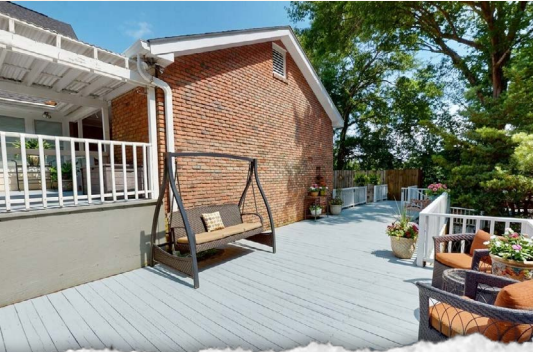
smalltownproperties.com

Information is believed to be accurate but not guaranteed.

210 NORTH GEORGE WALLACE DRIVE

TROY

PIKE COUNTY, ALABAMA



SMALLTOWN
HUNTING PROPERTIES
& REAL ESTATESM

JASON PERDUE

LAND SPECIALIST

C: 334-304-2711

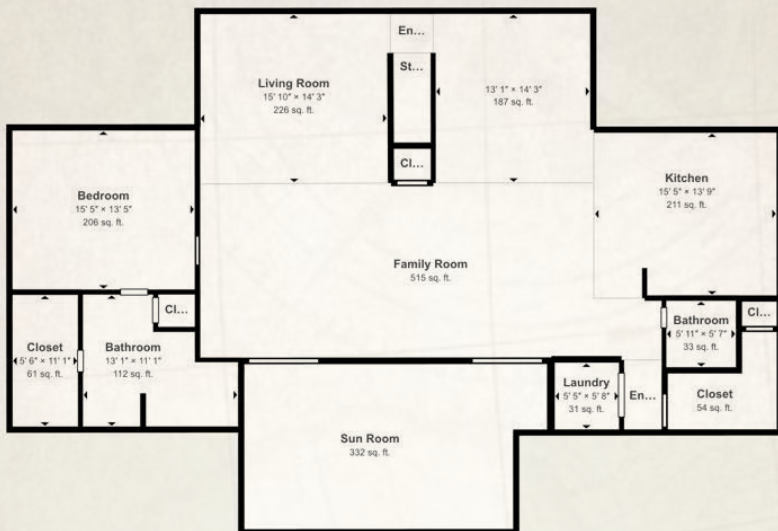
O: 334-535-0242

jperdue@smalltownproperties.com

215 E Sixth St. - Luverne, AL 36049

smalltownproperties.com

Information is believed to be accurate but not guaranteed.



SMALLTOWN

HUNTING PROPERTIES
& REAL ESTATESM

JASON PERDUE

LAND SPECIALIST

C: 334-304-2711

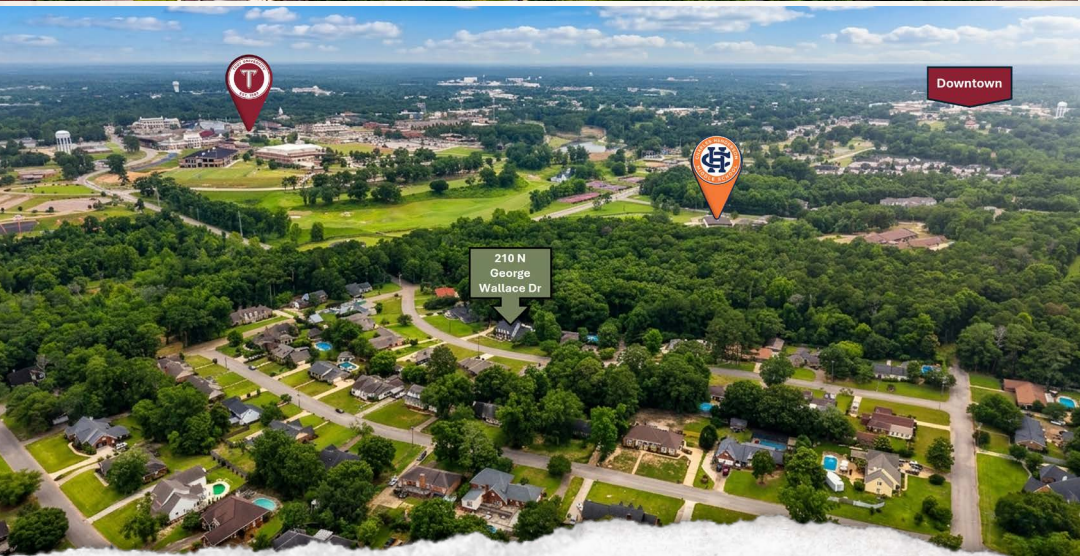
O: 334-535-0242

jperdue@smalltownproperties.com

215 E Sixth St. - Luverne, AL 36049

smalltownproperties.com

Information is believed to be accurate but not guaranteed.



SMALLTOWN

HUNTING PROPERTIES
& REAL ESTATESM

JASON PERDUE

LAND SPECIALIST

C: 334-304-2711

O: 334-535-0242

jperdue@smalltownproperties.com

215 E Sixth St. - Luverne, AL 36049

smalltownproperties.com

Information is believed to be accurate but not guaranteed.

210 NORTH GEORGE WALLACE DRIVE

TROY | PIKE COUNTY, ALABAMA



SMALLTOWN

HUNTING PROPERTIES
& REAL ESTATESM

JASON PERDUE

LAND SPECIALIST

C: 334-304-2711

O: 334-535-0242

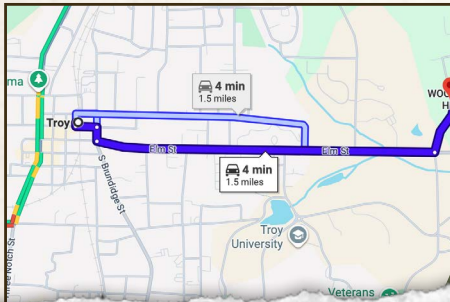
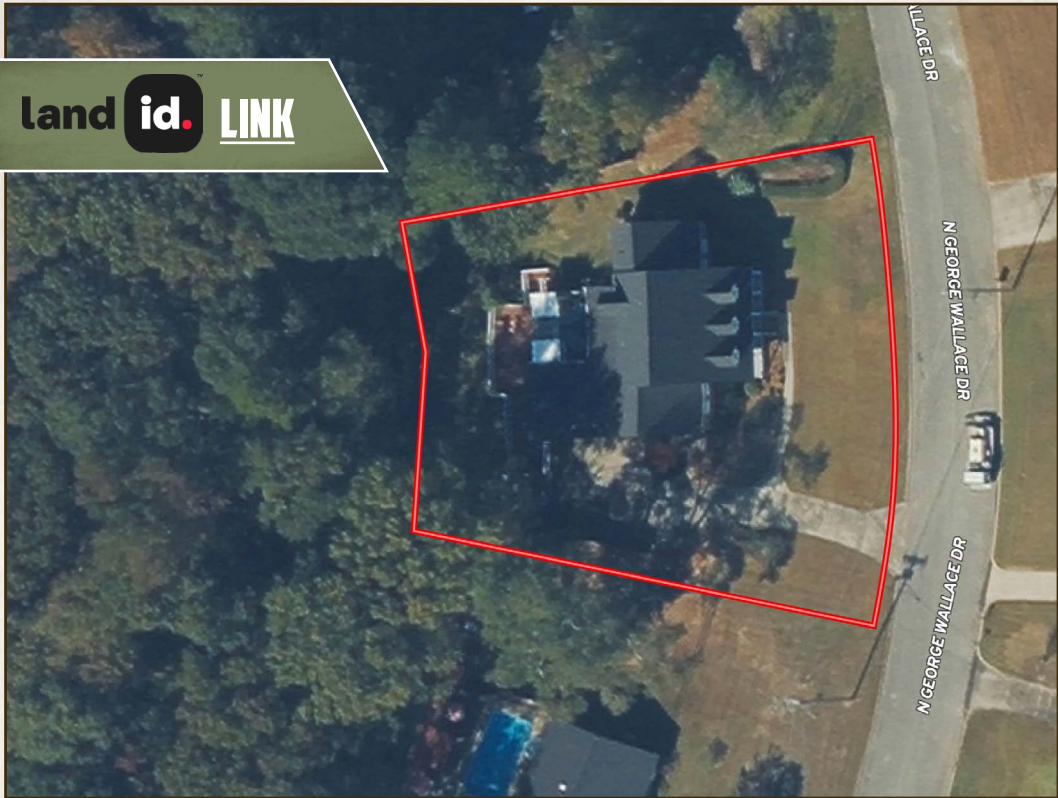
jperdue@smalltownproperties.com

215 E Sixth St. - Luverne, AL 36049

smalltownproperties.com

Information is believed to be accurate but not guaranteed.

land id. LINK



Directions From Downtown Troy, AL: Travel on Elm Street for 1.2 miles. Turn left onto North George Wallace Drive and the property will be on the left in 0.2 miles.

[LINK TO GOOGLE MAP DIRECTIONS](#)



SMALLTOWN
HUNTING PROPERTIES
& REAL ESTATESM

JASON PERDUE

LAND SPECIALIST

C: 334-304-2711

O: 334-535-0242

jperdue@smalltownproperties.com

215 E Sixth St. - Luverne, AL 36049

smalltownproperties.com

Information is believed to be accurate but not guaranteed.