

42.5± ACRES
KEMPER COUNTY, MS

\$85,000



SMALLTOWN
HUNTING PROPERTIES
& REAL ESTATESM

THE KEMPER 42.5

PROPERTY PROFILE

LOCATION:

- Bloomfield Road
Preston, MS 39354
- Access via Deeded Easement
- Kemper County
- 0.8± Miles N of Kemper Lake
- 14.4± Miles NW of DeKalb
- 31± Miles SE of Louisville
- 45.1± Miles N of Meridian

PROPERTY USE:

- Hunting
- Recreational
- Timber Investment

COORDINATES:

- 32.8292, -88.73905

TAX INFORMATION:

- Parcel 057-02-12.000
- 2025 Taxes: \$117.44

PROPERTY INFORMATION:

- 42.5± Acres
- Pine Plantation
- Established Gravel Road
- Former Shale Excavation Area
- Small Pond
- Deer/Turkey/Small Game



SMALLTOWN
HUNTING PROPERTIES
& REAL ESTATESM

DEREK EAVES

LAND SPECIALIST

C: 662-803-2001

O: 769-760-0005

derek@smalltownproperties.com

2121 5th St., Suite 206 - Meridian, MS 39301

smalltownproperties.com

Information is believed to be accurate but not guaranteed.

WELCOME TO THE KEMPER 42.5

LOCATED IN KEMPER COUNTY, MISSISSIPPI, THIS 42.5± ACRE TRACT OFFERS AN EXCELLENT OPPORTUNITY FOR RECREATION, HUNTING, AND TIMBER INVESTMENT. The property is conveniently situated 0.8± miles north of Kemper Lake, a popular 650± acre destination for fishing and outdoor recreation; 14.4± miles northwest of DeKalb; 31± miles southeast of Louisville; and 45.1± miles north of Meridian.

Access is provided by a deeded easement from Bloomfield Road leading to an established gravel road that extends into the property. The tract consists primarily of a pine plantation, offering long-term timber investment potential while also providing quality wildlife habitat. A former shale excavation area creates unique topography and includes a small pond, adding both visual appeal and a year-round water source for wildlife.



SMALLTOWN
HUNTING PROPERTIES
& REAL ESTATESM

DEREK EAVES

LAND SPECIALIST

C: 662-803-2001

O: 769-760-0005

derek@smalltownproperties.com

2121 5th St., Suite 206 - Meridian, MS 39301

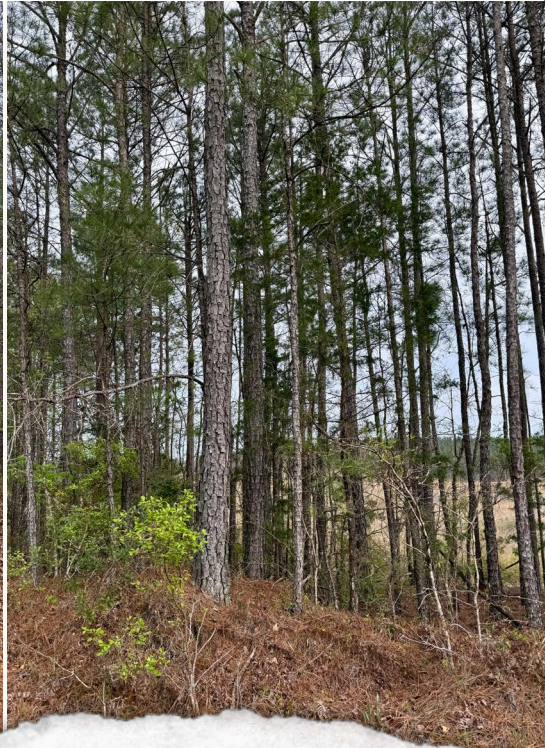
smalltownproperties.com

Information is believed to be accurate but not guaranteed.

MORE ABOUT THE KEMPER 42.5

The Kemper 42.5 supports a healthy population of deer, turkey, and other small game, making it an attractive option for hunters and outdoor enthusiasts. Whether you're seeking a private recreational retreat, a hunting property, or a timber investment with future potential, this 42.5± acre tract offers a combination of accessibility, natural resources, and recreational value in a desirable location.

Contact Derek Eaves today to schedule a private showing and experience #TheSmallTownWay.



SMALLTOWN
HUNTING PROPERTIES
& REAL ESTATESM

DEREK EAVES

LAND SPECIALIST

C: 662-803-2001

O: 769-760-0005

derek@smalltownproperties.com

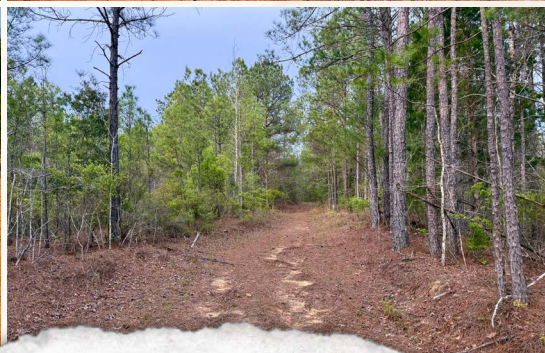
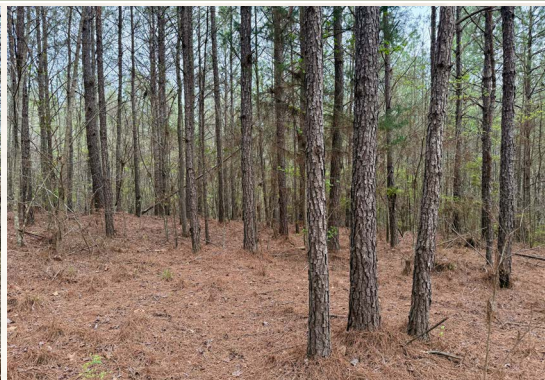
2121 5th St., Suite 206 - Meridian, MS 39301

smalltownproperties.com

Information is believed to be accurate but not guaranteed.

42.5± ACRES

KEMPER COUNTY, MISSISSIPPI



SMALLTOWN
HUNTING PROPERTIES
& REAL ESTATESM

DEREK EAVES

LAND SPECIALIST

C: 662-803-2001

O: 769-760-0005

derek@smalltownproperties.com

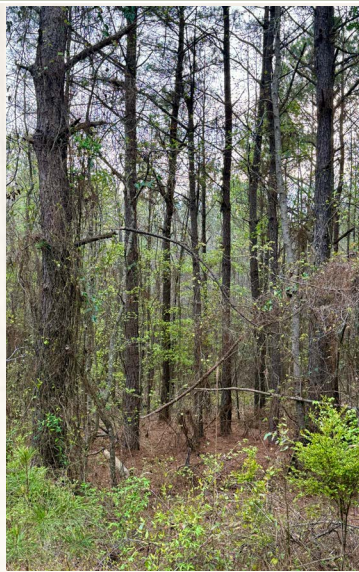
2121 5th St., Suite 206 - Meridian, MS 39301

smalltownproperties.com

Information is believed to be accurate but not guaranteed.

42.5± ACRES

KEMPER COUNTY, MISSISSIPPI



SMALLTOWN
HUNTING PROPERTIES
& REAL ESTATESM

DEREK EAVES

LAND SPECIALIST

C: 662-803-2001

O: 769-760-0005

derek@smalltownproperties.com

2121 5th St., Suite 206 - Meridian, MS 39301

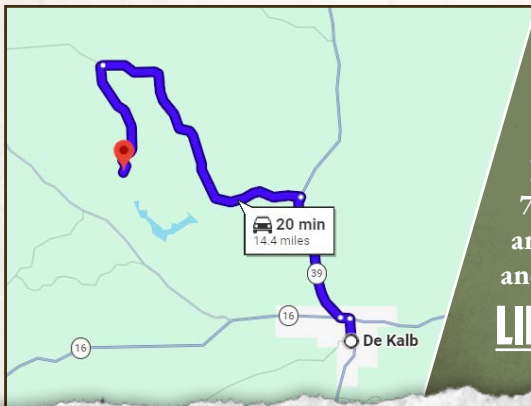
smalltownproperties.com

Information is believed to be accurate but not guaranteed.

42.5± ACRES

KEMPER COUNTY, MISSISSIPPI

land **id.** LINK



Directions From DeKalb, MS: Travel on Main Avenue for 0.6 miles. Turn left onto Highway 16 East and continue for 0.2 miles. Turn right onto MS-19 North and proceed for 3.3 miles. Turn left onto Kellis Store Road and travel for 7.2 miles. Turn left onto Bloomfield Road and continue for 3.1 miles to the property and sign on the right.

LINK TO GOOGLE MAP DIRECTIONS



SMALLTOWN
HUNTING PROPERTIES
& REAL ESTATESM

DEREK EAVES

LAND SPECIALIST

C: 662-803-2001

O: 769-760-0005

derek@smalltownproperties.com

2121 5th St., Suite 206 - Meridian, MS 39301

smalltownproperties.com

Information is believed to be accurate but not guaranteed.