



SMALLTOWN

HUNTING PROPERTIES
& REAL ESTATESM

112 APPLE BLOSSOM DRIVE
SALTILLO | LEE COUNTY, MS
\$199,000



OFFICE (662) 238-4077 | WWW.SMALLTOWNPROPERTIES.COM

112 APPLE BLOSSOM DRIVE

PROPERTY PROFILE

LOCATION:

- 112 Apple Blossom Drive
Saltillo, MS 38866
- Lee County
- 2.2± Miles N of Saltillo
- 8.3± Miles SW of Baldwyn
- 10.5± Miles N of Tupelo

COORDINATES:

- 34.4026, -88.6913

PROPERTY USE:

- Residential
- Investment

PROPERTY INFORMATION:

- 0.26± Acre Lot
- 1,335± SqFt Home
- 3 Bedrooms/2 Baths
- Heated & Cooled
Garage & Attic
- Natural Gas
- Gas Fireplace
- 2-Car Garage
- Fully Fenced Back Yard

TAX INFORMATION:

- Parcel # 053M-08-003-27
- 2025 Taxes: \$1,230.04



LUKE GOSSETT | LAND SPECIALIST
C: 662-832-8822 | lgossett@smalltownproperties.com

PIERCE HENRY | LAND SPECIALIST
C: 662-687-4112 | pierce@smalltownproperties.com

50 CR 401 - Oxford, MS 38655 | O: 662-238-4077 | smalltownproperties.com

Information is believed to be accurate but not guaranteed.

WELCOME TO 112 APPLE BLOSSOM DRIVE

WELCOME HOME TO 112 APPLE BLOSSOM DRIVE IN SALTILLO, MISSISSIPPI! This charming three-bedroom, two-bathroom home built in 1998 offers 1,335± square feet of comfortable living space on a 0.26± acre lot in Lee County.

Come inside to a spacious open-concept living and kitchen area that's perfect for gathering with family or entertaining friends. The cozy living room features a beautiful natural gas fireplace, creating a warm and inviting atmosphere year-round. This home also offers a heated and cooled two-car garage along with heated and cooled attic space, providing exceptional flexibility for storage, a workshop, hobby space, or future expansion.

Outside, you'll find a fully fenced backyard that's ideal for children, pets, or simply enjoying a quiet evening outdoors. With natural gas service and thoughtful features throughout, this home combines comfort, convenience, and Southern charm.

Contact Pierce Henry or Luke Gossett today to schedule a private showing and make 112 Apple Blossom Drive your new address.



LUKE GOSSETT | LAND SPECIALIST
C: 662-832-8822 | lgossett@smalltownproperties.com

PIERCE HENRY | LAND SPECIALIST
C: 662-687-4112 | pierce@smalltownproperties.com

50 CR 401 - Oxford, MS 38655 | O: 662-238-4077 | smalltownproperties.com

Information is believed to be accurate but not guaranteed.

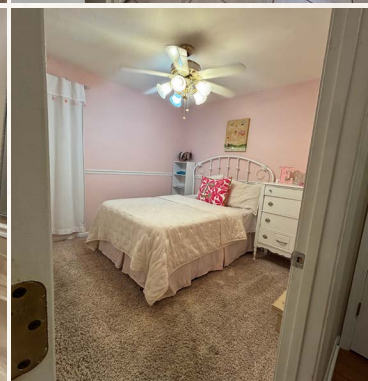


SMALLTOWN
HUNTING PROPERTIES
& REAL ESTATESM

LUKE GOSSETT | LAND SPECIALIST
C: 662-832-8822 | lgossett@smalltownproperties.com

PIERCE HENRY | LAND SPECIALIST
C: 662-687-4112 | pierce@smalltownproperties.com

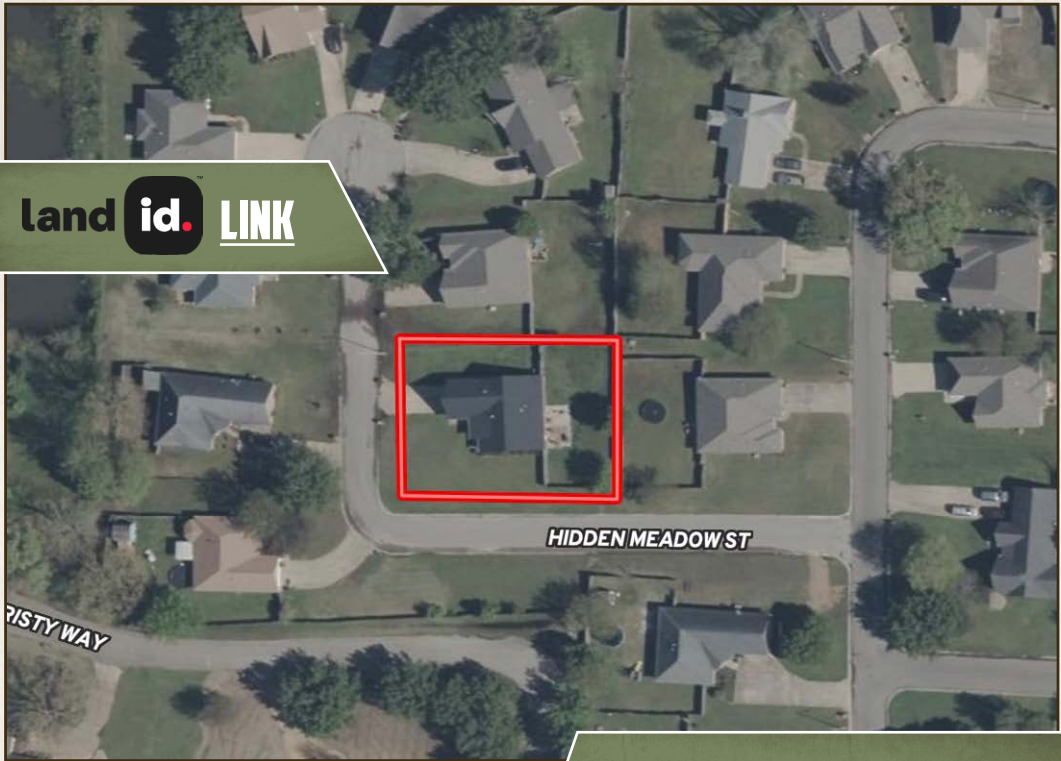
Information is believed to be accurate but not guaranteed.



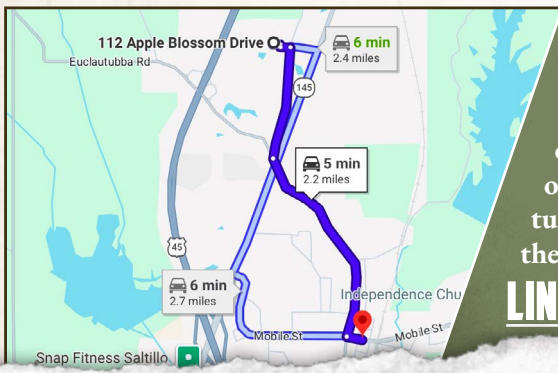
LUKE GOSSETT | LAND SPECIALIST
C: 662-832-8822 | lgossett@smalltownproperties.com

PIERCE HENRY | LAND SPECIALIST
C: 662-687-4112 | pierce@smalltownproperties.com

Information is believed to be accurate but not guaranteed.



land **id.** LINK



Directions From Saltillo, MS: Travel on N 3rd Avenue for 1.3 miles. Take a slight right turn onto Pull Tight Road and continue for 0.7 miles. Turn left onto Golden Lane, and then turn right onto Jim Warron Cove. Immediately turn left onto Apple Blossom Drive, and the house will be on the right.

LINK TO GOOGLE MAP DIRECTIONS



LUKE GOSSETT | LAND SPECIALIST
C: 662-832-8822 | lgossett@smalltownproperties.com



SMALLTOWN
HUNTING PROPERTIES
& REAL ESTATESM



PIERCE HENRY | LAND SPECIALIST
C: 662-687-4112 | pierce@smalltownproperties.com