

**18.93± ACRES**  
**PRENTISS COUNTY, MS**  
**\$127,000**



**SMALLTOWN**  
HUNTING PROPERTIES  
& REAL ESTATE<sup>SM</sup>

**OFFICE (662) 238-4077**



# THE PRENTISS 18.93

## PROPERTY PROFILE

### LOCATION:

- Lovers Lane Ext  
Booneville, MS 38829
- At the End of a Dead End Road
- Within the City Limits
- Prentiss County
- 24.5± Miles S of Corinth
- 28.8± Miles N of Tupelo

### COORDINATES:

- 34.634672, -88.590399

### TAX INFORMATION:

- Parcel# 060422-20-03800
- 2024 - \$75.37

### PROPERTY INFORMATION:

- 18.93± Acres
- Established Food Plot
- Maintained Trail System
- Deer & Turkey
- Small Creek
- Surrounded by Large,  
Managed Tracts
- All City Utilities Available

### PROPERTY USE:

- Hunting
- Potential Homesite
- Recreational
- Investment



**SMALLTOWN**  
HUNTING PROPERTIES  
& REAL ESTATE<sup>SM</sup>

**ANNAH BARNES**

LAND & RESIDENTIAL SPECIALIST

C: 662-316-3971

O: 662-238-4077

[annah@smalltownproperties.com](mailto:annah@smalltownproperties.com)

50 CR 401 - Oxford, MS 38655

[smalltownproperties.com](http://smalltownproperties.com)

Information is believed to be accurate but not guaranteed.



# WELCOME TO THE PRENTISS 18.93

**IF YOU ARE LOOKING FOR A TRUE HONEY HOLE FOR DEER AND TURKEY, END YOUR SEARCH HERE AT THE PRENTISS 18.93!** This hidden gem is tucked away right in the heart of Booneville, in Prentiss County, Mississippi, and hunts like you're in the Midwest. The current owner swears it's as good as it gets—and after walking it, I agree.

Located at the end of a dead-end road, the 18.93± acre property offers exceptional privacy, providing a rare sense of seclusion despite being just minutes from everything. The parcel is surrounded by large, well-managed tracts and lies in one of the best natural pinch points I've ever seen. Wildlife funnels through here like clockwork, making it a dream setup for any serious hunter. A small creek meanders along the west side of the property, offering a reliable water source that further enhances the habitat for deer and turkey.



**SMALLTOWN**  
HUNTING PROPERTIES  
& REAL ESTATE<sup>SM</sup>

**ANNAH BARNES**

*LAND & RESIDENTIAL SPECIALIST*

**C: 662-316-3971**

**O: 662-238-4077**

**[annah@smalltownproperties.com](mailto:annah@smalltownproperties.com)**

**50 CR 401 - Oxford, MS 38655**

**[smalltownproperties.com](http://smalltownproperties.com)**

Information is believed to be accurate but not guaranteed.



# MORE ABOUT THE PRENTISS 18.93

But, it's more than just a hunting tract—this property also offers multiple potential home sites and full city amenities: water, sewer, natural gas, electricity, and high-speed fiber internet.

Whether you're looking for the ultimate urban hunting spot or a private homesite with room to roam, the Prentiss 18.93 is worth considering!

**Contact Annah Barnes today to schedule a private tour  
and experience #TheSmallTownWay!**



**SMALLTOWN**  
HUNTING PROPERTIES  
& REAL ESTATE<sup>SM</sup>

**ANNAH BARNES**  
LAND & RESIDENTIAL SPECIALIST

C: 662-316-3971

O: 662-238-4077

[annah@smalltownproperties.com](mailto:annah@smalltownproperties.com)

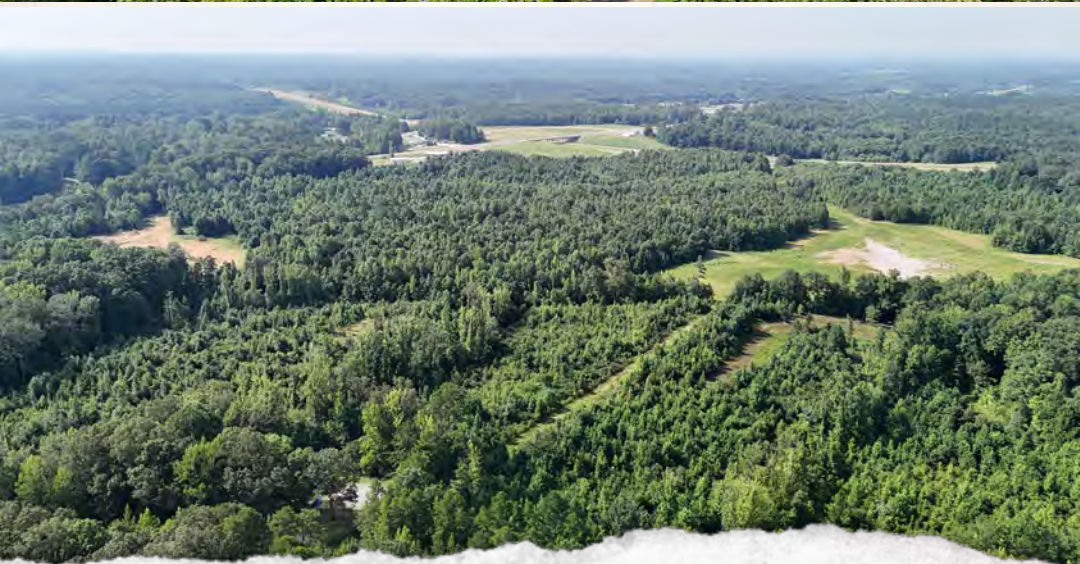
50 CR 401 - Oxford, MS 38655

[smalltownproperties.com](http://smalltownproperties.com)

Information is believed to be accurate but not guaranteed.



**18.93± ACRES** **PRENTISS COUNTY, MISSISSIPPI**



**SMALLTOWN**  
HUNTING PROPERTIES  
& REAL ESTATE<sup>SM</sup>

**ANNAH BARNES**  
*LAND & RESIDENTIAL SPECIALIST*

**C: 662-316-3971**

**O: 662-238-4077**

**[annah@smalltownproperties.com](mailto:annah@smalltownproperties.com)**

**50 CR 401 - Oxford, MS 38655**

**[smalltownproperties.com](http://smalltownproperties.com)**

Information is believed to be accurate but not guaranteed.





**SMALLTOWN**  
HUNTING PROPERTIES  
& REAL ESTATE<sup>SM</sup>

**ANNAH BARNES**  
LAND & RESIDENTIAL SPECIALIST  
C: 662-316-3971  
O: 662-238-4077

[annah@smalltownproperties.com](mailto:annah@smalltownproperties.com)

50 CR 401 - Oxford, MS 38655

[smalltownproperties.com](http://smalltownproperties.com)

Information is believed to be accurate but not guaranteed.



**18.93± ACRES    PRENTISS COUNTY, MISSISSIPPI**



**SMALLTOWN**  
HUNTING PROPERTIES  
& REAL ESTATE<sup>SM</sup>

**ANNAH BARNES**

*LAND & RESIDENTIAL SPECIALIST*

**C: 662-316-3971**

**O: 662-238-4077**

**[annah@smalltownproperties.com](mailto:annah@smalltownproperties.com)**

**50 CR 401 - Oxford, MS 38655**

**[smalltownproperties.com](http://smalltownproperties.com)**

*Information is believed to be accurate but not guaranteed.*





**SMALLTOWN**  
HUNTING PROPERTIES  
& REAL ESTATE<sup>SM</sup>

**ANNAH BARNES**  
LAND & RESIDENTIAL SPECIALIST  
C: 662-316-3971  
O: 662-238-4077

[annah@smalltownproperties.com](mailto:annah@smalltownproperties.com)

50 CR 401 - Oxford, MS 38655

[smalltownproperties.com](http://smalltownproperties.com)

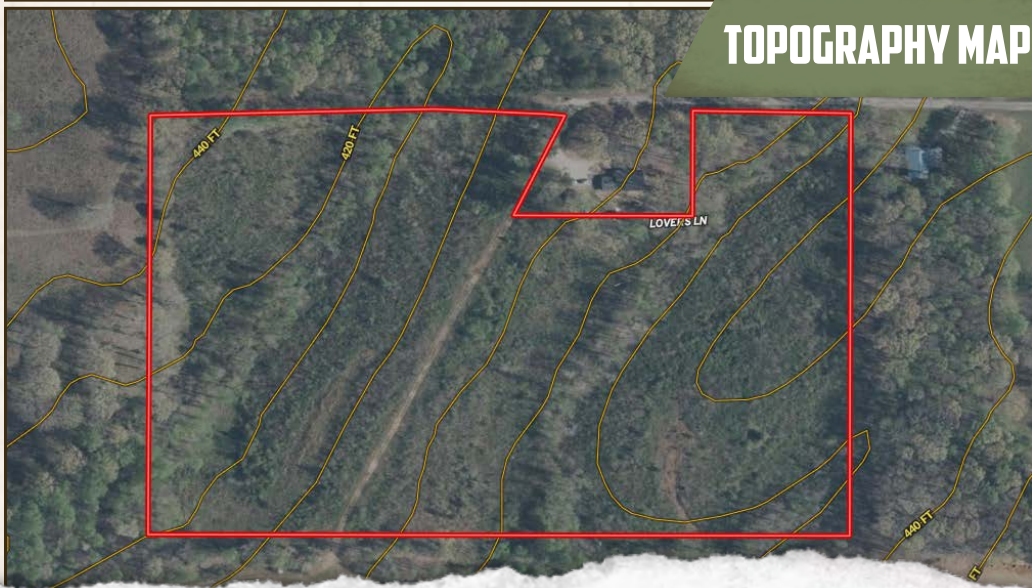
Information is believed to be accurate but not guaranteed.



## WATER MAP



## TOPOGRAPHY MAP



**SMALLTOWN**  
HUNTING PROPERTIES  
& REAL ESTATE<sup>SM</sup>

**ANNAH BARNES**

LAND & RESIDENTIAL SPECIALIST

C: 662-316-3971

O: 662-238-4077

[annah@smalltownproperties.com](mailto:annah@smalltownproperties.com)

50 CR 401 - Oxford, MS 38655

[smalltownproperties.com](http://smalltownproperties.com)

Information is believed to be accurate but not guaranteed.



SOIL MAP



| SOIL CODE | SOIL DESCRIPTION   | ACRES  | %    | CPI | NCCPI | CAP |
|-----------|--|--------|------|-----|-------|-----|
| OLS       | Okeelala, Luverne, and Smithdale soils, 5 to 45 percent slopes | 18.01  | 100  | 0   | 16    | 7e  |
| TOTALS    |  | 18.01( | 100% | -   | 16.0  | 7   |



**SMALLTOWN**  
HUNTING PROPERTIES  
& REAL ESTATE<sup>SM</sup>

**ANNAH BARNES**  
LAND & RESIDENTIAL SPECIALIST  
C: 662-316-3971  
O: 662-238-4077

[annah@smalltownproperties.com](mailto:annah@smalltownproperties.com)

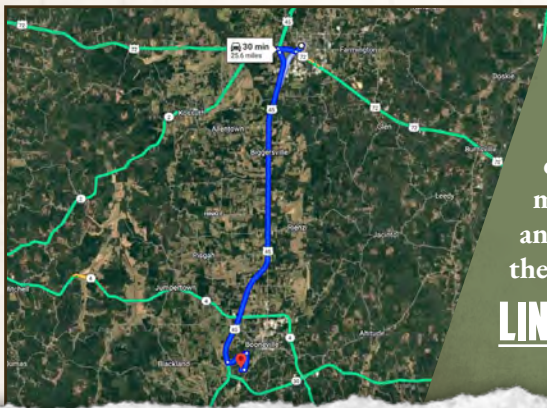
50 CR 401 - Oxford, MS 38655

[smalltownproperties.com](http://smalltownproperties.com)

Information is believed to be accurate but not guaranteed.



**18.93± ACRES** PRENTISS COUNTY, MISSISSIPPI



**Directions From Corinth, MS:**  
Travel 22.1 miles south on US-45. Turn left onto W College Street and continue 1.5 miles. Turn right on Lovers Lane Road and proceed 1.1 miles. Turn right on Lovers Lane Ext. and in 0.2 miles the property will be on the right.

**[LINK TO GOOGLE MAP DIRECTIONS](#)**



**SMALLTOWN**  
HUNTING PROPERTIES  
& REAL ESTATE<sup>SM</sup>

**ANNAH BARNES**

LAND & RESIDENTIAL SPECIALIST

C: 662-316-3971

O: 662-238-4077

[annah@smalltownproperties.com](mailto:annah@smalltownproperties.com)

50 CR 401 - Oxford, MS 38655

[smalltownproperties.com](http://smalltownproperties.com)

Information is believed to be accurate but not guaranteed.