



SMALLTOWN
HUNTING PROPERTIES
& REAL ESTATESM

EAGLES LANDING ESTATES
MENA | POLK COUNTY, AR
11 LOTS AVAILABLE | ACREAGE & PRICES VARY

OFFICE (479) 588-1034 | WWW.SMALLTOWNPROPERTIES.COM

LOCATION:

- Midland Drive
Mena, AR 71953
- Within the City Limits
- Polk County
- 2± Miles E of Downtown Mena
- 3.6± Miles SE of the Trails at
Mena (Mountain Bike Trails)
- 9.6± Miles N of the
Wolf Pen Gap ATV Trails
- 75± Miles W of Hot Springs
- 80± Miles S of Fort Smith

COORDINATES:

- 34.581388, -94.208211

PROPERTY USE:

- Potential Home Sites
- Residential
- Investment

TAX INFORMATION:

- TBD

PROPERTY INFORMATION:

- 11 Lots in
Eagles Landing Estates
- Mix of Open Pasture & Timber
- Gently Rolling Terrain
- Paved Road Frontage
- Ward Creek Borders Some Lots
- Peaceful Country Setting
- Abundant Wildlife
- Power & City Water Available
- 3 Lots Approved for
Septic Systems
- Sewer on Multiple Lots
- Sewer Easements for
Remaining Lots

**See more details about
each lot on the next page.*



SMALLTOWN
HUNTING PROPERTIES
& REAL ESTATESM

NICK PATE

LAND SPECIALIST

C: 479-234-3288

O: 479-588-1034

nick@smalltownproperties.com

5607 Highway 71 South - Cove, AR 71937

smalltownproperties.com

Information is believed to be accurate but not guaranteed.

THE 11 LOTS:

Lot 1: 6.41± Acres \$102,560

- Includes a 2± Acre Pond

Lot 2: 5.11± Acres \$81,760

Lot 3: 5.15± Acres \$82,400

Lot 4: 2.99± Acres \$47,840

Lot 5: 2.99± Acres \$47,840

**Lot 6: 5.66± Acres with
A Home and Barn \$300,000**

- 2,578± SqFt Home
- 4 Bedrooms/2 Baths
- Wood-Burning Insert
in Den/Dining Area
- Built-In Storage Throughout
- Formal Living Room
- Large Laundry Room
- Carport with
Attached Tool Storage
- Barn Behind the Home

Lot 7: 4.10± Acres \$65,600

Lot 8: 3.41± Acres \$54,560

- Approved for Septic System

Lot 9: 3.14± Acres \$50,240

- Approved for Septic System

Lot 10: 3.27± Acres \$52,320

- Approved for Septic System

Lot 11: 5.12± Acres \$81,920



SMALLTOWN
HUNTING PROPERTIES
& REAL ESTATESM

NICK PATE

LAND SPECIALIST

C: 479-234-3288

O: 479-588-1034

nick@smalltownproperties.com

5607 Highway 71 South - Cove, AR 71937

smalltownproperties.com

Information is believed to be accurate but not guaranteed.

WELCOME TO EAGLES LANDING ESTATES

WELCOME TO EAGLES LANDING ESTATES—AN EXCEPTIONAL NEW SUBDIVISION TUCKED INSIDE THE CITY LIMITS OF MENA, ARKANSAS, WHERE COUNTRY LIVING MEETS EVERYDAY CONVENIENCE. The thoughtfully designed Polk County development offers 11 lots, each with its own unique appeal featuring a beautiful blend of open pasture and mature timber, creating the perfect residential setting.

What truly sets Eagles Landing Estates apart is its rare combination of peaceful, rural character with the benefits of being in town. Here, you can enjoy quiet mornings, abundant wildlife, and wide-open views, all while remaining just minutes from Mena's amenities.



SMALLTOWN
HUNTING PROPERTIES
& REAL ESTATESM

NICK PATE

LAND SPECIALIST

C: 479-234-3288

O: 479-588-1034

nick@smalltownproperties.com

5607 Highway 71 South - Cove, AR 71937

smalltownproperties.com

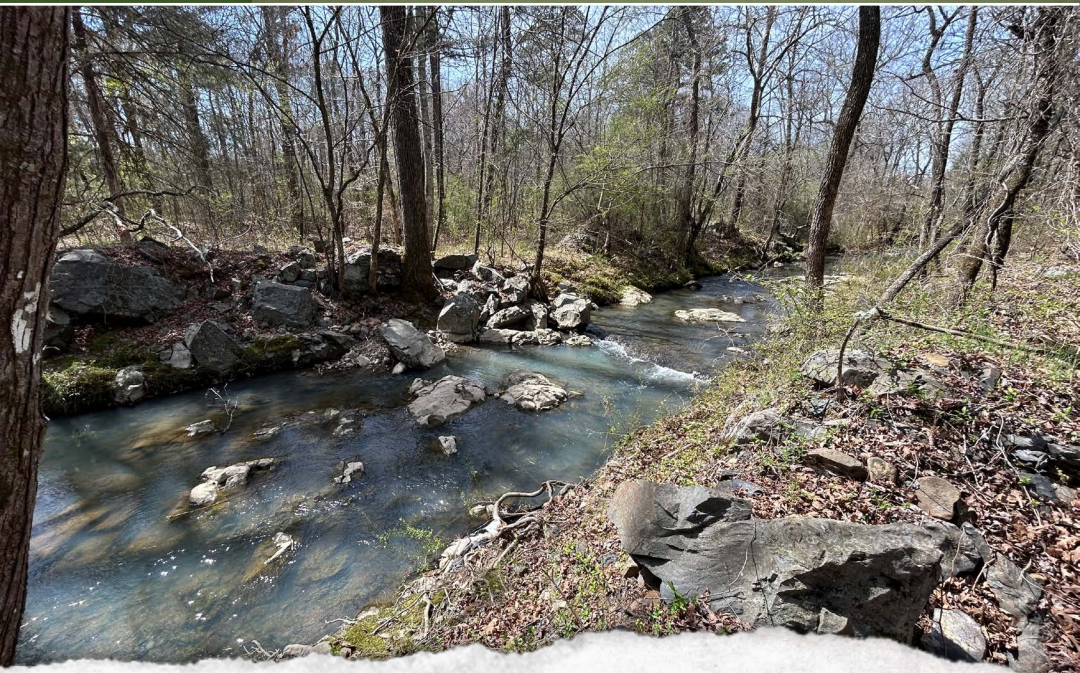
Information is believed to be accurate but not guaranteed.

MORE ABOUT EAGLES LANDING ESTATES

Several of the lots boast Ward Creek forming their southern boundary, adding both natural beauty and a serene backdrop. The land itself offers gently rolling terrain with multiple ideal building sites, giving buyers flexibility to design and position their homes to take full advantage of the landscape.

Utilities are already in place to make your build as seamless as possible. Power and city water are available throughout the subdivision. Many lots have sewer access, and easements are established to extend sewer service to those that do not. For added flexibility, Lots 8, 9, and 10 include a city-approved variance allowing for septic systems if preferred.

Lot 1 features a stunning 2± acre pond—perfect for evening fishing or simply unwinding right outside your front door.



SMALLTOWN
HUNTING PROPERTIES
& REAL ESTATESM

NICK PATE

LAND SPECIALIST

C: 479-234-3288

O: 479-588-1034

nick@smalltownproperties.com

5607 Highway 71 South - Cove, AR 71937

smalltownproperties.com

Information is believed to be accurate but not guaranteed.

MORE ABOUT EAGLES LANDING ESTATES

For a move-in-ready option, Lot 6 includes a well-built 2,578± square foot home offering four bedrooms and two baths. This home is rich with character and functionality, featuring built-in storage throughout, a cozy wood-burning insert in the dining/den area, a spacious formal living room, and a generously sized laundry room. Outside, you'll find a carport with attached tool storage, along with a barn at the back of the property, perfect for animals, equipment, or additional storage.

Whether you're looking to build, invest, or settle into a place that offers space and convenience, Eagles Landing Estates delivers a hard-to-find opportunity in the Mena area. If you've been searching for that true country feel without leaving town, this property is a solid choice!

**Contact Nick Pate today to learn more
and experience #TheSmallTownWay.**



SMALLTOWN
HUNTING PROPERTIES
& REAL ESTATESM

NICK PATE

LAND SPECIALIST

C: 479-234-3288

O: 479-588-1034

nick@smalltownproperties.com

5607 Highway 71 South - Cove, AR 71937

smalltownproperties.com

Information is believed to be accurate but not guaranteed.



SMALLTOWN
HUNTING PROPERTIES
& REAL ESTATESM

NICK PATE

LAND SPECIALIST

C: 479-234-3288

O: 479-588-1034

nick@smalltownproperties.com

5607 Highway 71 South - Cove, AR 71937

smalltownproperties.com

Information is believed to be accurate but not guaranteed.



SMALLTOWN

HUNTING PROPERTIES
& REAL ESTATESM

NICK PATE
LAND SPECIALIST
C: 479-234-3288
O: 479-588-1034
nick@smalltownproperties.com
5607 Highway 71 South - Cove, AR 71937
smalltownproperties.com

Information is believed to be accurate but not guaranteed.



SMALLTOWN

HUNTING PROPERTIES
& REAL ESTATESM

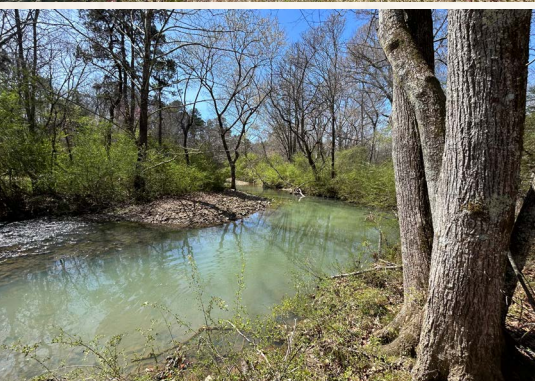
NICK PATE
LAND SPECIALIST
C: 479-234-3288
O: 479-588-1034

nick@smalltownproperties.com

5607 Highway 71 South - Cove, AR 71937

smalltownproperties.com

Information is believed to be accurate but not guaranteed.



SMALLTOWN

HUNTING PROPERTIES
& REAL ESTATESM

NICK PATE

LAND SPECIALIST

C: 479-234-3288

O: 479-588-1034

nick@smalltownproperties.com

5607 Highway 71 South - Cove, AR 71937

smalltownproperties.com

Information is believed to be accurate but not guaranteed.

LOT 6: 5.66± ACRES WITH A HOME AND BARN



SMALLTOWN
HUNTING PROPERTIES
& REAL ESTATESM

NICK PATE

LAND SPECIALIST

C: 479-234-3288

O: 479-588-1034

nick@smalltownproperties.com

5607 Highway 71 South - Cove, AR 71937

smalltownproperties.com

Information is believed to be accurate but not guaranteed.

LOT 6: 5.66± ACRES WITH A HOME AND BARN



SMALLTOWN
HUNTING PROPERTIES
& REAL ESTATESM

NICK PATE

LAND SPECIALIST

C: 479-234-3288

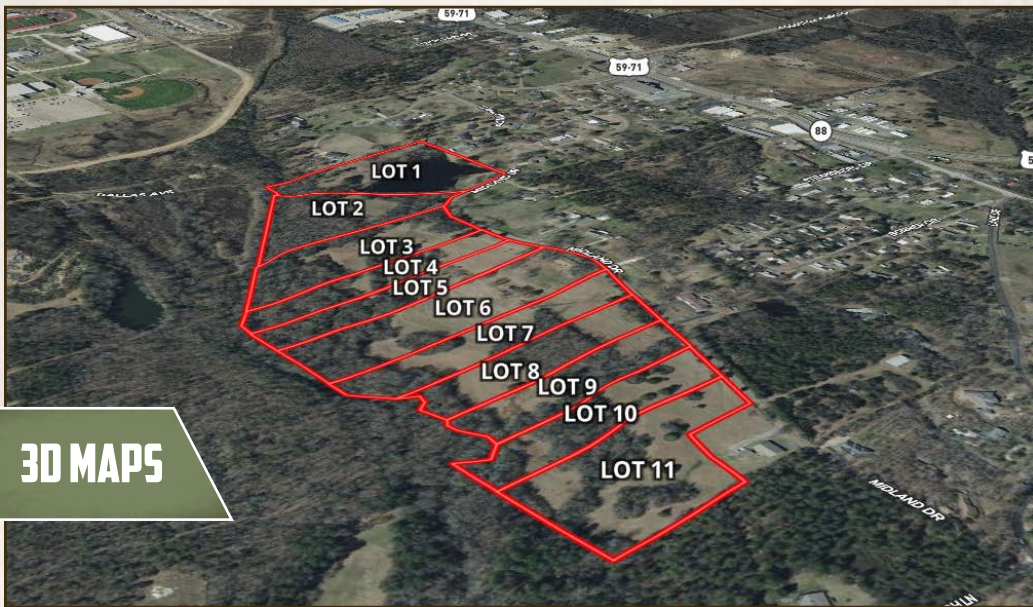
O: 479-588-1034

nick@smalltownproperties.com

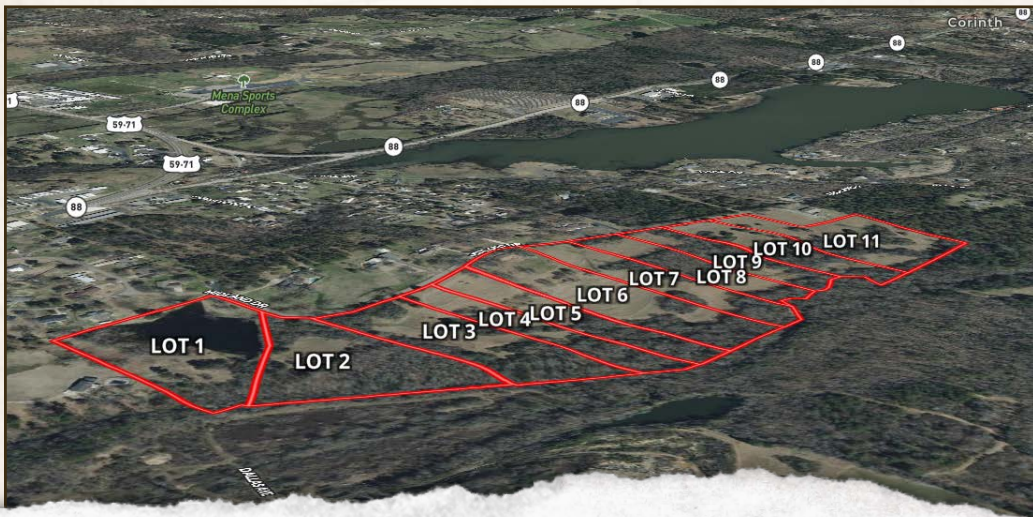
5607 Highway 71 South - Cove, AR 71937

smalltownproperties.com

Information is believed to be accurate but not guaranteed.



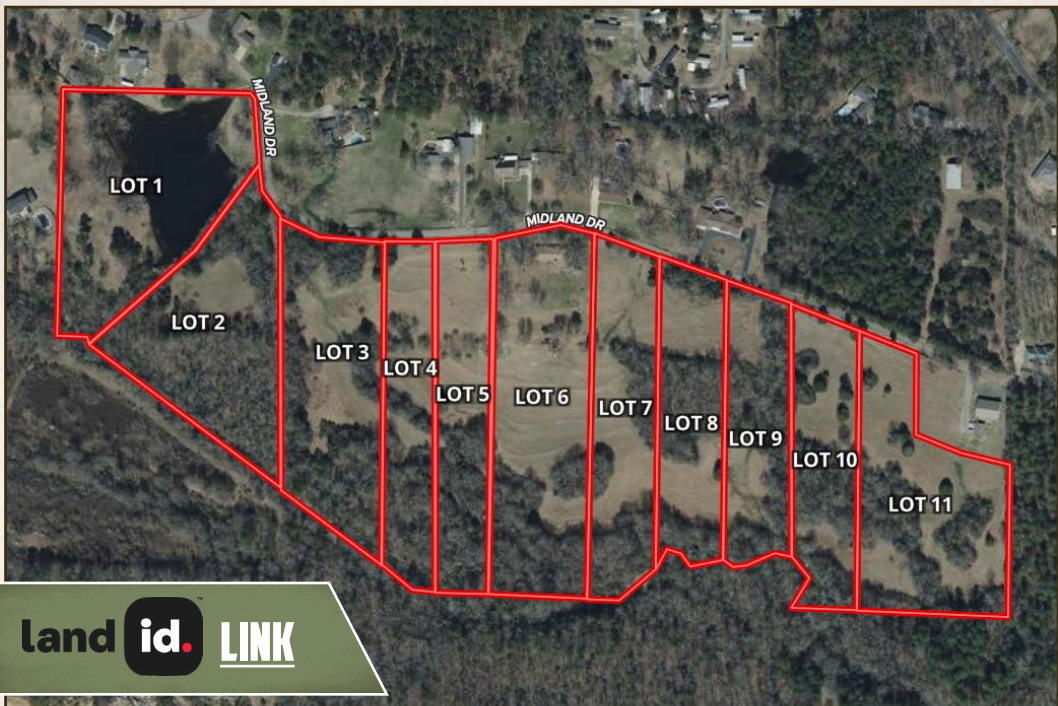
3D MAPS



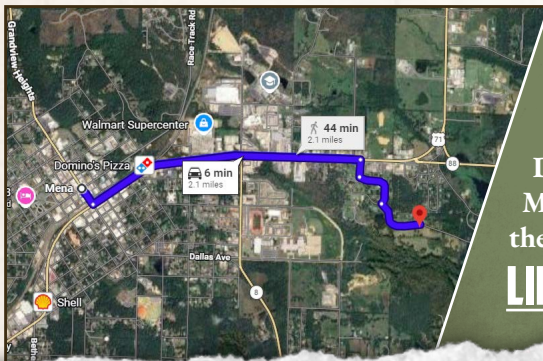
SMALLTOWN
 HUNTING PROPERTIES
 & REAL ESTATESM

NICK PATE
 LAND SPECIALIST
 C: 479-234-3288
 O: 479-588-1034
 nick@smalltownproperties.com
 5607 Highway 71 South - Cove, AR 71937
 smalltownproperties.com

Information is believed to be accurate but not guaranteed.



land id. LINK



Directions From the Intersection of Hwy 71 N and Hwy 8 East in Mena, AR: Travel 0.6 miles east on Hwy 71 N. Turn right on Oaklawn Drive and continue 463 feet. Turn left on Oaklawn Drive and proceed 0.2 miles. Turn left on Midland Drive and the property will be on the right.

[LINK TO GOOGLE MAP DIRECTIONS](#)



SMALLTOWN
 HUNTING PROPERTIES
 & REAL ESTATESM

NICK PATE

LAND SPECIALIST

C: 479-234-3288

O: 479-588-1034

nick@smalltownproperties.com

5607 Highway 71 South - Cove, AR 71937

smalltownproperties.com

Information is believed to be accurate but not guaranteed.