

**120± ACRES**  
**LAUDERDALE COUNTY, MS**  
**\$228,000**



**SMALLTOWN**  
HUNTING PROPERTIES  
& REAL ESTATE<sup>SM</sup>

OFFICE (769) 888-2522 | [WWW.SMALLTOWNPROPERTIES.COM](http://WWW.SMALLTOWNPROPERTIES.COM)

# THE LAUDERDALE 120

## PROPERTY PROFILE

### LOCATION:

- Air Control Station Road  
Meridian, MS 39307
- Access Via Deeded Easement
- Lauderdale County
- 7.4± Miles W of  
Downtown Meridian
- 28± Miles NE of Newton
- 89± Miles NE of Hattiesburg
- 200± Miles NE of New Orleans, LA

### COORDINATES:

- 32.3791, -88.81065

### TAX INFORMATION:

- 2025 - \$360.20

### PROPERTY USE:

- Hunting
- Recreation
- Potential Home/Camp Site
- Timber Investment

### PROPERTY INFORMATION:

- 120± Acres
- Abundant Deer/Turkey
- Mixed Pine & Hardwood
- Multiple Age Stands
- Food Plot Locations
- New Internal Trail System
- Multiple Creeks
- Several Access Points  
via Easements



**SMALLTOWN**  
HUNTING PROPERTIES  
& REAL ESTATE<sup>SM</sup>

### HUNTER MARLOW

LAND SPECIALIST

REGISTERED FORESTER #2879

C: 601-701-3088

O: 769-888-2522

[hmarlow@smalltownproperties.com](mailto:hmarlow@smalltownproperties.com)

4848 Main St. - Flora, MS 39071

[smalltownproperties.com](http://smalltownproperties.com)

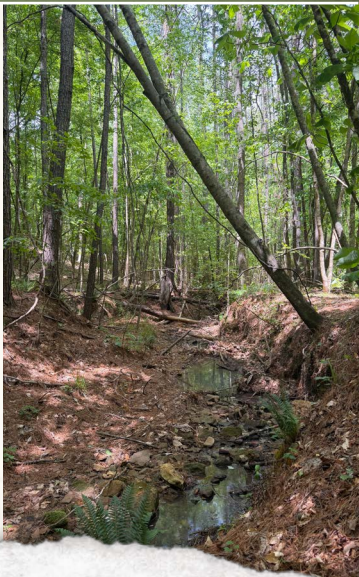
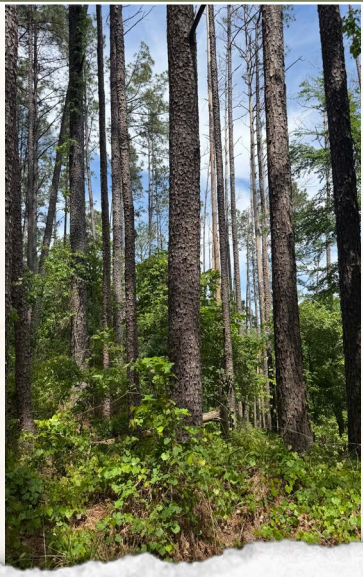
Information is believed to be accurate but not guaranteed.

# WELCOME TO THE LAUDERDALE 120

**HAVE YOU BEEN LOOKING FOR AN AFFORDABLE, PERFECT HUNTING TRACT?**  
Welcome to the Lauderdale 120, where you can hunt, build, and enjoy!

Located in the hills just outside of Meridian, MS, this 120± acre tract offers a rare blend of mature timber, fresh regeneration, and exceptional recreational features. On the north side of the property, an 80± acre portion is dominated by mature pine and hardwood stands, providing immediate aesthetic appeal and significant timber value. The 40± acre portion to the south was recently harvested, creating a blank canvas for replanting, wildlife enhancement, or future management plans. A newly constructed trail system winds throughout the entire property, connecting every ridge, hollow, food plot, and creek crossing, making the land fully accessible by ATV or on foot.

A couple of food plot locations are in place on the 40 acres, and there are numerous locations to add more on the northern parcel, offering excellent hunting opportunities for deer and turkey.



**SMALLTOWN**  
HUNTING PROPERTIES  
& REAL ESTATE<sup>SM</sup>

**HUNTER MARLOW**

LAND SPECIALIST

REGISTERED FORESTER #2879

C: 601-701-3088

O: 769-888-2522

[hmarlow@smalltownproperties.com](mailto:hmarlow@smalltownproperties.com)

4848 Main St. - Flora, MS 39071

[smalltownproperties.com](http://smalltownproperties.com)

Information is believed to be accurate but not guaranteed.

# MORE ABOUT THE LAUDERDALE 120

A unique and key feature of the Lauderdale 120 is the rock-bottom creeks that meander throughout, adding year-round water sources and scenic character. The rolling terrain includes several steep hills that enhance the landscape, offering elevated views, natural bedding cover, and unique stand locations. The creeks and drains serve as natural funnels for all wildlife and create some very picturesque opportunities to hunt cruising bucks in the fall and gobblers in the spring.

With utilities available nearby, the Lauderdale 120 offers the perfect hilltop views, quality hunting, and setup to put down roots for a generational hunting camp.

**Contact Hunter Marlow today to schedule a private showing and experience #TheSmallTownWay!**



**SMALLTOWN**  
HUNTING PROPERTIES  
& REAL ESTATE<sup>SM</sup>

**HUNTER MARLOW**

LAND SPECIALIST  
REGISTERED FORESTER #2879

C: 601-701-3088

O: 769-888-2522

[hmarlow@smalltownproperties.com](mailto:hmarlow@smalltownproperties.com)

4848 Main St. - Flora, MS 39071

[smalltownproperties.com](http://smalltownproperties.com)

Information is believed to be accurate but not guaranteed.

120± ACRES

LAUDERDALE COUNTY, MISSISSIPPI



# SMALLTOWN

HUNTING PROPERTIES  
& REAL ESTATE<sup>SM</sup>

**HUNTER MARLOW**

LAND SPECIALIST

REGISTERED FORESTER #2879

C: 601-701-3088

O: 769-888-2522

[hmarlow@smalltownproperties.com](mailto:hmarlow@smalltownproperties.com)

4848 Main St. - Flora, MS 39071

[smalltownproperties.com](http://smalltownproperties.com)

Information is believed to be accurate but not guaranteed.

120± ACRES

LAUDERDALE COUNTY, MISSISSIPPI



**SMALLTOWN**  
HUNTING PROPERTIES  
& REAL ESTATE<sup>SM</sup>

**HUNTER MARLOW**

LAND SPECIALIST

REGISTERED FORESTER #2879

C: 601-701-3088

O: 769-888-2522

[hmarlow@smalltownproperties.com](mailto:hmarlow@smalltownproperties.com)

4848 Main St. - Flora, MS 39071

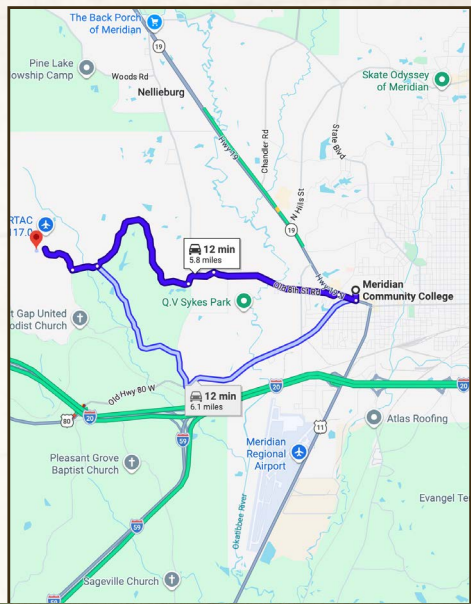
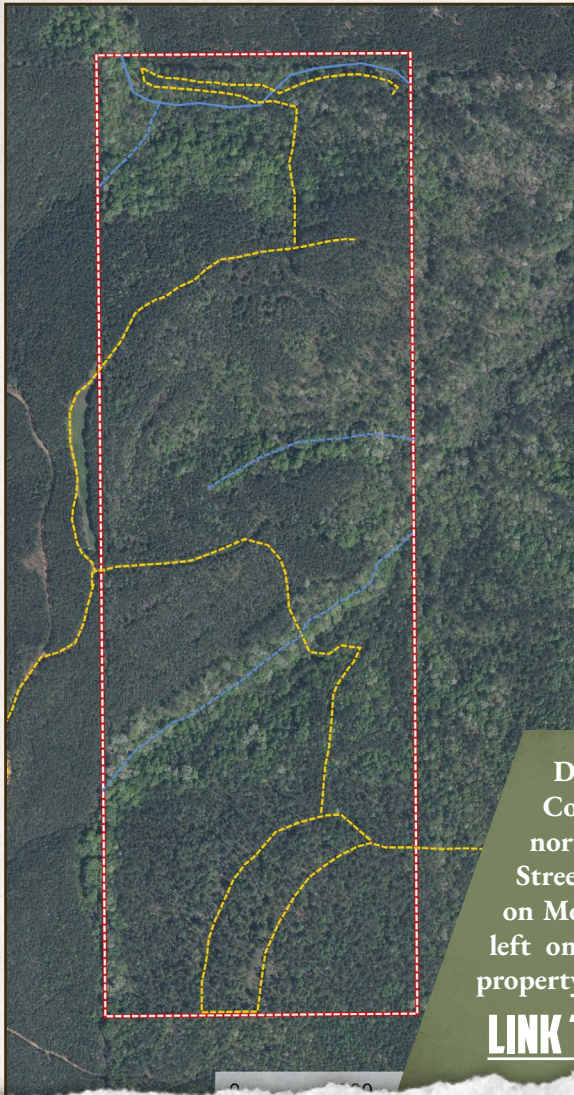
[smalltownproperties.com](http://smalltownproperties.com)

Information is believed to be accurate but not guaranteed.

120± ACRES

LAUDERDALE COUNTY, MISSISSIPPI

land id. LINK



Directions From Meridian Community College in Meridian, MS: Travel 0.1 miles north on Hwy 19. Turn left on Old 8th Street Drive and continue 2 miles. Turn left on Morgan Road and travel 3.6 miles. Turn left on Air Control Station Road and the property will be on the left in 0.2 miles.

[LINK TO GOOGLE MAP DIRECTIONS](#)



**SMALLTOWN**  
HUNTING PROPERTIES  
& REAL ESTATE<sup>SM</sup>

**HUNTER MARLOW**

LAND SPECIALIST  
REGISTERED FORESTER #2879

C: 601-701-3088

O: 769-888-2522

[hmarlow@smalltownproperties.com](mailto:hmarlow@smalltownproperties.com)

4848 Main St. - Flora, MS 39071

[smalltownproperties.com](http://smalltownproperties.com)

Information is believed to be accurate but not guaranteed.