



**1064 SULLIVAN ROAD  
WINSTON COUNTY, MS**

**A HOME ON 2.47± ACRES | \$175,000**



**SMALLTOWN**  
HUNTING PROPERTIES  
& REAL ESTATE <sup>SM</sup>

**OFFICE (769) 760-0005 | [WWW.SMALLTOWNPROPERTIES.COM](http://WWW.SMALLTOWNPROPERTIES.COM)**

# 1064 SULLIVAN ROAD

## PROPERTY PROFILE

### LOCATION:

- 1064 Sullivan Road  
Preston, MS 39354
- Winston County
- 4.9± Miles SE of  
Nanah Waiya High School
- 19.2± Miles SE of Louisville
- 22.5± Miles NE of Philadelphia

### COORDINATES:

- 32.9405, -88.84635

### TAX INFORMATION:

- 131480034-0000110
- 2025 Taxes: \$626.47

### PROPERTY USE:

- Residential

### PROPERTY INFORMATION:

- 2.47± Acres
- 2,560± SqFt Mobile Home
  - 4 Bedrooms/2 Baths
  - Primary Suite
  - Double Vanity/Bathtub/Shower
  - Walk-In Closet
  - Open Concept Kitchen/Living Room
  - Kitchen Island
  - Dining Room
  - Central Heat & Air
  - Laundry Room
- 30'x30' Shop with Roll-Up Door
- 24'x30' Covered Back Patio
- 8'x12' Metal Shed
- Slag Driveway
- Covered Parking
- High Speed Fiber Internet
- Nanah Waiya School District



**SMALLTOWN**  
HUNTING PROPERTIES  
& REAL ESTATE<sup>SM</sup>

**DEREK EAVES**

LAND SPECIALIST

C: 662-803-2001

O: 769-760-0005

derek@smalltownproperties.com

2121 5th St., Suite 206 - Meridian, MS 39301

smalltownproperties.com

Information is believed to be accurate but not guaranteed.

# WELCOME TO 1064 SULLIVAN ROAD

WELCOME TO THIS WELL-APPOINTED COUNTRY PROPERTY LOCATED AT 1064 SULLIVAN ROAD IN PRESTON, MISSISSIPPI. Nestled in a quiet rural setting in Winston County, this home sits on 2.47± acres and offers both privacy and convenience. Located just 4.9± miles southeast of Nanih Waiya School, 19.2± miles southeast of Louisville, and 22.5± miles northeast of Philadelphia, the Winston 2.47 is situated within the highly regarded Nanih Waiya School District.

This 2,560± square foot mobile home features four bedrooms and two bathrooms, designed with both comfort and functionality in mind. The heart of the home is the open-concept kitchen and living area, complete with a spacious kitchen island and adjoining dining room, making it perfect for everyday living and entertaining.



**SMALLTOWN**  
HUNTING PROPERTIES  
& REAL ESTATE<sup>SM</sup>

**DEREK EAVES**

LAND SPECIALIST

C: 662-803-2001

O: 769-760-0005

[derek@smalltownproperties.com](mailto:derek@smalltownproperties.com)

2121 5th St., Suite 206 - Meridian, MS 39301

[smalltownproperties.com](http://smalltownproperties.com)

Information is believed to be accurate but not guaranteed.

# MORE ABOUT 1064 SULLIVAN ROAD

The primary bedroom suite provides a relaxing retreat with a walk-in closet and a private primary bathroom featuring a double vanity, soaking tub, and separate shower. Additional interior features include central heat and air, a laundry room, and ample living space throughout.

The Winston 2.47 offers plenty of outdoor space along with valuable improvements. A 30' x 30' shop with a roll-up door is ideal for storage, hobbies, or workspace needs. Enjoy outdoor gatherings on the 24' x 30' back patio, and take advantage of additional storage with the 8' x 12' metal shed. The property also features a slag driveway and covered parking.

Modern amenities include high-speed fiber internet, making this home suitable for remote work or streaming. Whether you're looking for a full-time residence or a quiet country retreat, the Winston 2.47 offers a great combination of space, comfort, and practicality.

**To experience #TheSmallTownWay for yourself,  
contact Derek Eaves today to schedule a private showing.**



**SMALLTOWN**  
HUNTING PROPERTIES  
& REAL ESTATE<sup>SM</sup>

**DEREK EAVES**

LAND SPECIALIST

C: 662-803-2001

O: 769-760-0005

[derek@smalltownproperties.com](mailto:derek@smalltownproperties.com)

2121 5th St., Suite 206 - Meridian, MS 39301

[smalltownproperties.com](http://smalltownproperties.com)

Information is believed to be accurate but not guaranteed.

**A HOME ON 2.47± ACRES    1064 SULLIVAN ROAD    WINSTON COUNTY, MISSISSIPPI**



**SMALLTOWN**  
HUNTING PROPERTIES  
& REAL ESTATE<sup>SM</sup>

**DEREK EAVES**

LAND SPECIALIST

C: 662-803-2001

O: 769-760-0005

derek@smalltownproperties.com

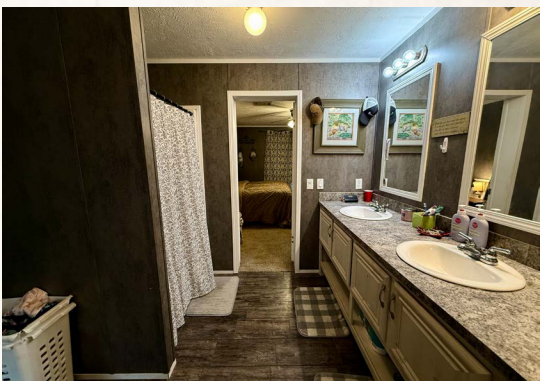
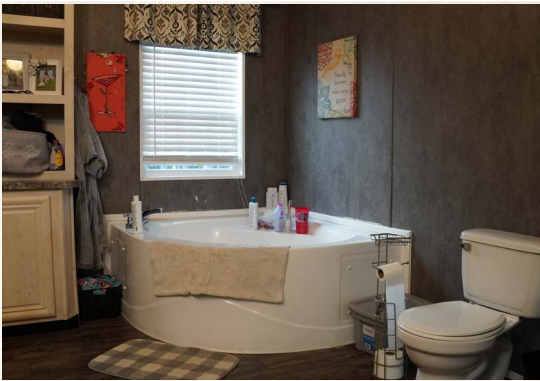
2121 5th St., Suite 206 - Meridian, MS 39301

smalltownproperties.com

*Information is believed to be accurate but not guaranteed.*

A HOME ON 2.47± ACRES

1064 SULLIVAN ROAD WINSTON COUNTY, MISSISSIPPI



**SMALLTOWN**  
HUNTING PROPERTIES  
& REAL ESTATE<sup>SM</sup>

**DEREK EAVES**

LAND SPECIALIST

C: 662-803-2001

O: 769-760-0005

derek@smalltownproperties.com

2121 5th St., Suite 206 - Meridian, MS 39301

smalltownproperties.com

Information is believed to be accurate but not guaranteed.

A HOME ON 2.47± ACRES

1064 SULLIVAN ROAD WINSTON COUNTY, MISSISSIPPI



**SMALLTOWN**  
HUNTING PROPERTIES  
& REAL ESTATE<sup>SM</sup>

**DEREK EAVES**

LAND SPECIALIST

C: 662-803-2001

O: 769-760-0005

derek@smalltownproperties.com

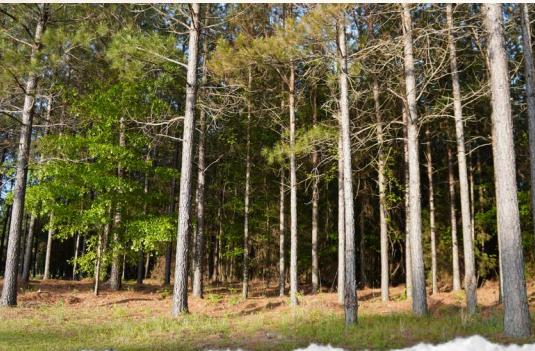
2121 5th St., Suite 206 - Meridian, MS 39301

smalltownproperties.com

*Information is believed to be accurate but not guaranteed.*

A HOME ON 2.47± ACRES

1064 SULLIVAN ROAD WINSTON COUNTY, MISSISSIPPI



# SMALLTOWN

HUNTING PROPERTIES  
& REAL ESTATE<sup>SM</sup>

**DEREK EAVES**

LAND SPECIALIST

C: 662-803-2001

O: 769-760-0005

[derek@smalltownproperties.com](mailto:derek@smalltownproperties.com)

2121 5th St., Suite 206 - Meridian, MS 39301

[smalltownproperties.com](http://smalltownproperties.com)

*Information is believed to be accurate but not guaranteed.*

A HOME ON 2.47± ACRES

1064 SULLIVAN ROAD

WINSTON COUNTY, MISSISSIPPI

land id. LINK

SULLIVAN RD

SULLIVAN RD



Directions from Nanih Waiya High School in Louisville, MS: Travel 2.9 miles southeast on Highway 397. Turn left onto Shuqualak Road and continue 1.6 miles. Turn right onto Sullivan Road. The property and sign will be on your left in 0.4 miles.

[LINK TO GOOGLE MAP DIRECTIONS](#)



**SMALLTOWN**  
HUNTING PROPERTIES  
& REAL ESTATE<sup>SM</sup>

**DEREK EAVES**

LAND SPECIALIST

C: 662-803-2001

O: 769-760-0005

derek@smalltownproperties.com

2121 5th St., Suite 206 - Meridian, MS 39301

smalltownproperties.com

Information is believed to be accurate but not guaranteed.

