



SMALLTOWN

HUNTING PROPERTIES
& REAL ESTATESM

252± ACRES
HARDEMAN COUNTY, TN
\$806,400



THE HARDEMAN 252

PROPERTY PROFILE

LOCATION:

- Van Buren Road
Saulsbury, TN 38067
- Hardeman County
- 6.5± N of Saulsbury
- 14± Miles S of Bolivar
- 34.9± Miles NE of Holly Springs, MS
- 43.5± Miles E of Collierville

COORDINATES:

- 35.0967, -89.0804

PROPERTY USE:

- Deer, Turkey, Duck Hunting
- Fishing
- Recreational
- Potential Cabin/Home Site

PROPERTY INFORMATION:

- 252± Total Acres
- 1.5± Acre Pond
- Rolling Topography
- Saulsbury Creek Frontage
- Natural Reneration
- Extensive Road System
- Established Food Plot
- Newly-Opened Food Plots
- Paved Road Frontage

TAX INFORMATION:

- Part of Parcel #: 148-003.00
- Taxes TBD



SHANE MARTIN | PRINCIPAL BROKER - WEST TN
C: 901-827-0224 | shane@smalltownproperties.com

smalltownproperties.com

CALEB WARREN | LAND SPECIALIST
C: 662-736-6764 | caleb@smalltownproperties.com

7115 Hwy 64 - Oakland, TN 38060 | O: 901-910-1809

Information is believed to be accurate but not guaranteed.

50 CR 401 - Oxford, MS 38655 | O: 662-238-4077

WELCOME TO THE HARDEMAN 252

WELCOME TO THE HARDEMAN 252, LOCATED ON VAN BUREN ROAD ROUGHLY SIX MILES NORTH OF SAULSBURY, TN. The 252± acre property offers an excellent opportunity for hunting and recreational use, providing plenty of privacy to escape and enjoy a piece of private land. With paved road frontage, rolling terrain, Saulsbury Creek frontage, open fields, and a swampy, flooded area, this diverse tract is worth considering!

The Hardeman County property features an extensive road system, giving you endless ingress and egress options for hunting deer or turkey. Approximately six years ago, the timber was harvested, and natural regeneration has since taken place, providing ample deer bedding and turkey nesting cover. There is a large, established food plot situated on the northern boundary of the property that is well-suited for growing a diverse range of food for wildlife. Three more food plot potential areas were recently opened with equipment to provide more hunting and food opportunities for wildlife. You will find a 1.5± acre pond on the north end of the property, a perfect water source for wildlife and also an option to satisfy your fishing desires.



SHANE MARTIN | PRINCIPAL BROKER - WEST TN
C: 901-827-0224 | shane@smalltownproperties.com

smalltownproperties.com

CALEB WARREN | LAND SPECIALIST
C: 662-736-6764 | caleb@smalltownproperties.com

7115 Hwy 64 - Oakland, TN 38060 | O: 901-910-1809

Information is believed to be accurate but not guaranteed.

50 CR 401 - Oxford, MS 38655 | O: 662-238-4077

MORE ABOUT THE HARDEMAN 252

The land mostly consists of mild rolling terrain, with the eastern boundary having live creek frontage along Saulsbury Creek, and this portion of the property falls in a flood zone. There are some pockets of standing water and mature cypress trees with potential for some duck hunting. The deer and turkey numbers in this area are strong, with signs of heavily trafficked trails and spottings of a flock of turkeys while riding around the property.

If building a primary home or a weekend getaway hunting cabin is something you have been looking for, there is a great location to build right up at the front entrance. The Bolivar Energy Authority is the power provider, Dixie Gas Co. supports the gas service, and fiber optic internet is available with Aeneas Communications. There is no community water, so a private well and septic tank will have to be dug and installed.

See what the Hardeman 252 has to offer!
Contact Caleb Warren or Shane Martin today to
schedule a tour and experience #TheSmallTownWay!



SHANE MARTIN | PRINCIPAL BROKER - WEST TN
C: 901-827-0224 | shane@smalltownproperties.com

smalltownproperties.com

CALEB WARREN | LAND SPECIALIST
C: 662-736-6764 | caleb@smalltownproperties.com

7115 Hwy 64 - Oakland, TN 38060 | O: 901-910-1809

Information is believed to be accurate but not guaranteed.

50 CR 401 - Oxford, MS 38655 | O: 662-238-4077

252± ACRES

HARDEMAN COUNTY, TENNESSEE



SMALLTOWN
HUNTING PROPERTIES
& REAL ESTATESM



SHANE MARTIN | PRINCIPAL BROKER - WEST TN
C: 901-827-0224 | shane@smalltownproperties.com

smalltownproperties.com

CALEB WARREN | LAND SPECIALIST
C: 662-736-6764 | caleb@smalltownproperties.com

7115 Hwy 64 - Oakland, TN 38060 | O: 901-910-1809

Information is believed to be accurate but not guaranteed.

50 CR 401 - Oxford, MS 38655 | O: 662-238-4077

252± ACRES

HARDEMAN COUNTY, TENNESSEE



SMALLTOWN
HUNTING PROPERTIES
& REAL ESTATESM



SHANE MARTIN | PRINCIPAL BROKER - WEST TN
C: 901-827-0224 | shane@smalltownproperties.com

smalltownproperties.com

CALEB WARREN | LAND SPECIALIST
C: 662-736-6764 | caleb@smalltownproperties.com

7115 Hwy 64 - Oakland, TN 38060 | O: 901-910-1809

Information is believed to be accurate but not guaranteed.

50 CR 401 - Oxford, MS 38655 | O: 662-238-4077

252± ACRES

HARDEMAN COUNTY, TENNESSEE



SMALLTOWN
HUNTING PROPERTIES
& REAL ESTATESM



SHANE MARTIN | PRINCIPAL BROKER - WEST TN
C: 901-827-0224 | shane@smalltownproperties.com

smalltownproperties.com

CALEB WARREN | LAND SPECIALIST
C: 662-736-6764 | caleb@smalltownproperties.com

7115 Hwy 64 - Oakland, TN 38060 | O: 901-910-1809

Information is believed to be accurate but not guaranteed.

50 CR 401 - Oxford, MS 38655 | O: 662-238-4077

252± ACRES

HARDEMAN COUNTY, TENNESSEE



SMALLTOWN
HUNTING PROPERTIES
& REAL ESTATESM



SHANE MARTIN | PRINCIPAL BROKER - WEST TN
C: 901-827-0224 | shane@smalltownproperties.com

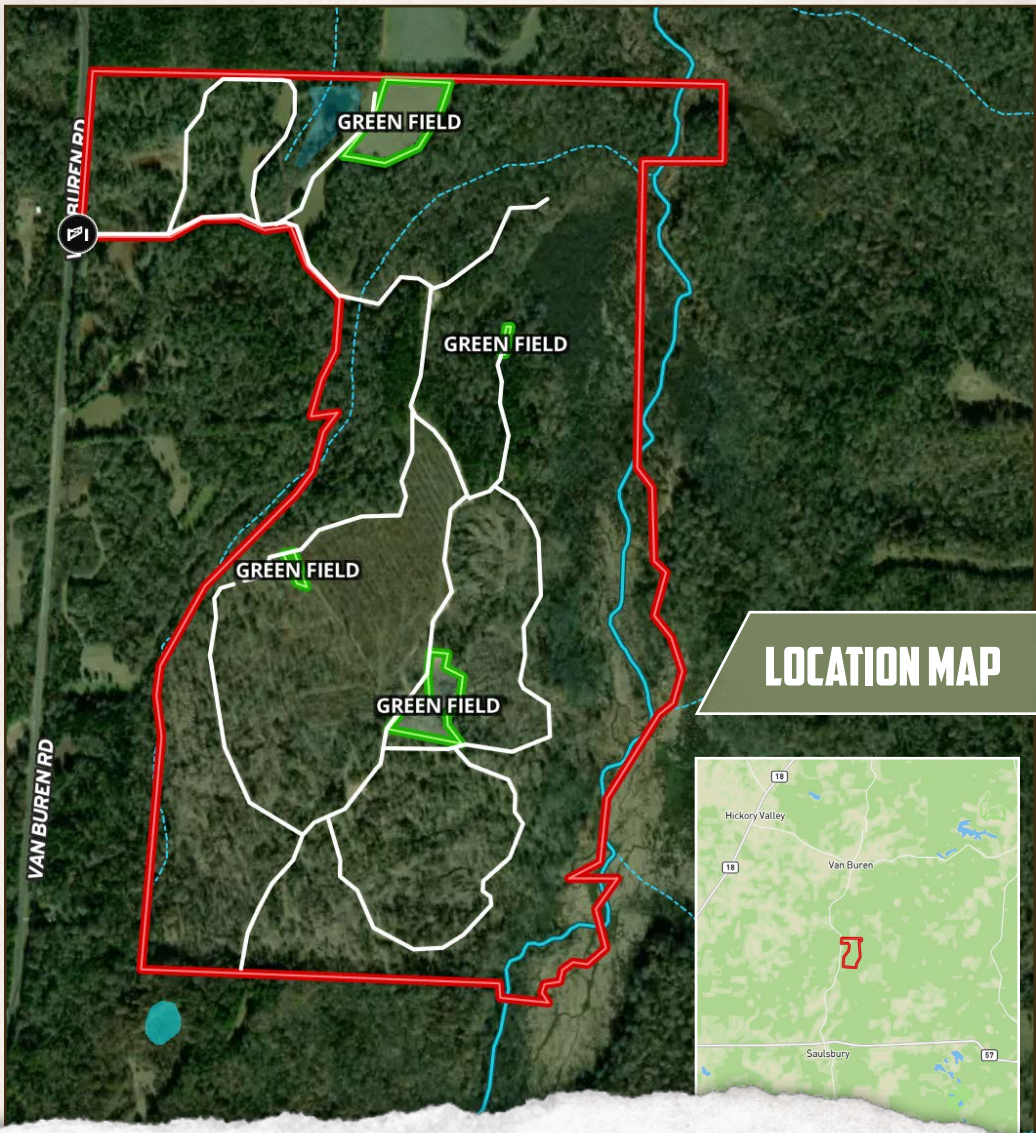
smalltownproperties.com

CALEB WARREN | LAND SPECIALIST
C: 662-736-6764 | caleb@smalltownproperties.com

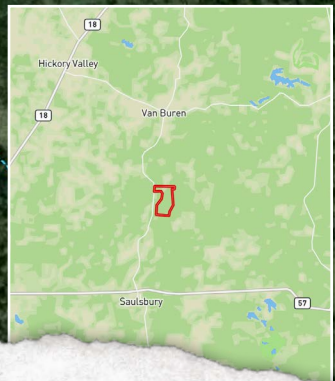
7115 Hwy 64 - Oakland, TN 38060 | O: 901-910-1809

Information is believed to be accurate but not guaranteed.

50 CR 401 - Oxford, MS 38655 | O: 662-238-4077



LOCATION MAP



SHANE MARTIN | PRINCIPAL BROKER - WEST TN
 C: 901-827-0224 | shane@smalltownproperties.com



SMALLTOWN
 HUNTING PROPERTIES
 & REAL ESTATESM

smalltownproperties.com



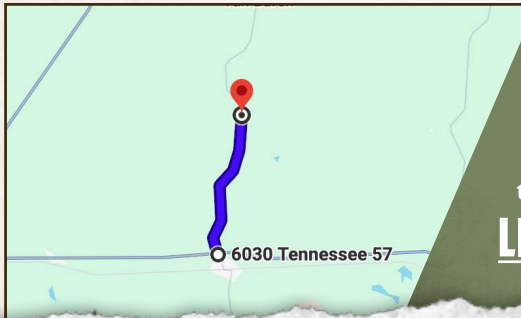
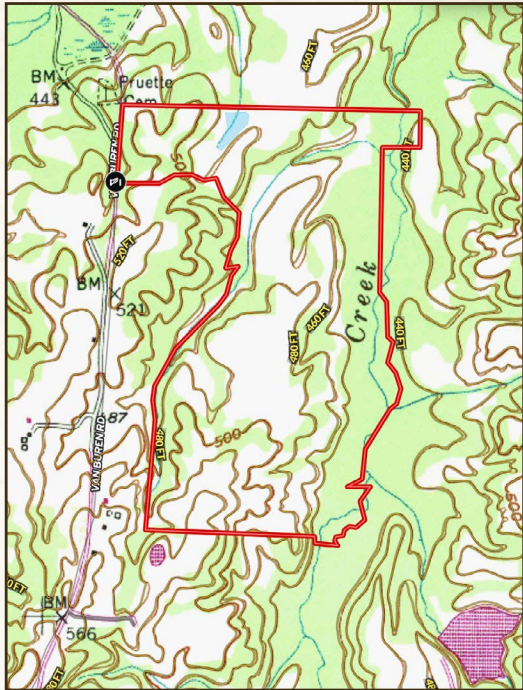
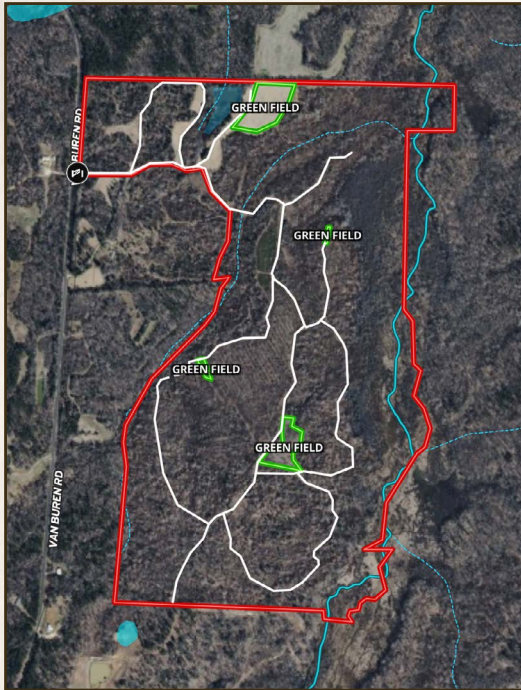
CALEB WARREN | LAND SPECIALIST
 C: 662-736-6764 | caleb@smalltownproperties.com

252± ACRES

HARDEMAN COUNTY, TENNESSEE

land id. LINK

TOPOGRAPHY MAP



Directions From the Intersection of HWY 57 and Van Buren Road in Saulsbury, TN: Travel 3.3 miles north on Van Buren Road to the property on the right.

LINK TO GOOGLE MAP DIRECTIONS



SHANE MARTIN | PRINCIPAL BROKER - WEST TN
C: 901-827-0224 | shane@smalltownproperties.com



SMALLTOWN
HUNTING PROPERTIES
& REAL ESTATE™

smalltownproperties.com



CALEB WARREN | LAND SPECIALIST
C: 662-736-6764 | caleb@smalltownproperties.com