



**268 BRYER LAKE ROAD**  
**PONTOTOC COUNTY, MS**  
**A HOME ON 1.62± ACRES | \$489,000**



**SMALLTOWN**  
HUNTING PROPERTIES  
& REAL ESTATE<sup>SM</sup>

**OFFICE (662) 238-4077 | [WWW.SMALLTOWNPROPERTIES.COM](http://WWW.SMALLTOWNPROPERTIES.COM)**

# 268 BRYER LAKE ROAD

# PROPERTY PROFILE

## LOCATION:

- 268 Bryer Lake Road  
Pontotoc, MS 38863
- Pontotoc County
- 4.5± Miles NW of Pontotoc
- 28.2± Miles SE of Oxford

## COORDINATES:

- 34.2597, -89.0669

## PROPERTY USE:

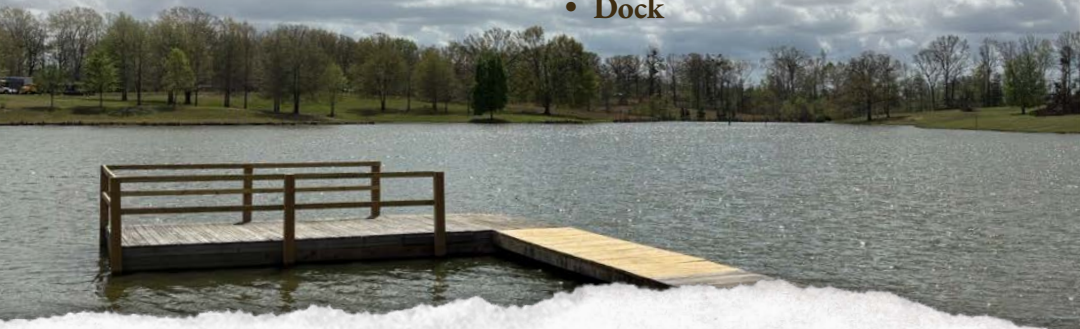
- Residential

## TAX INFORMATION:

- Parcel ID 067-35-000-003.22
- \$1,413.91 (2025)

## PROPERTY INFORMATION:

- 1.62± Acres
- 3,460± SqFt Home
- 4 Bedrooms/3 Bathrooms
- Large Living Room
- Spacious Kitchen  
with Walk-In Pantry
- Primary Suite  
with Walk-In Closet
- Upstairs Living Area  
with Bonus Room
- Large Screened-In Back Porch
- Outdoor Kitchen/  
Entertainment Area
- Storage Shed
- Bryer Lake Access
- Dock



**SMALLTOWN**  
HUNTING PROPERTIES  
& REAL ESTATE<sup>SM</sup>

**LUKE GOSSETT**

LAND SPECIALIST

C: 662-832-8822

O: 662-238-4077

[lgossett@smalltownproperties.com](mailto:lgossett@smalltownproperties.com)

50 CR 401 - Oxford, MS 38655

[smalltownproperties.com](http://smalltownproperties.com)

Information is believed to be accurate but not guaranteed.

# WELCOME TO 268 BRYER LAKE ROAD

WELCOME TO 268 BRYER LAKE ROAD IN PONTOTOC, MISSISSIPPI—A STUNNING LAKE-ACCESS PROPERTY OFFERING SPACE, COMFORT, AND EXCEPTIONAL OUTDOOR LIVING ON 1.62± ACRES. This impressive 3,460± square foot home welcomes you with peaceful water views and direct access to the beautiful Bryer Lake, complete with a private dock already in place—perfect for relaxing evenings, fishing, or enjoying time on the water.

Outside, you'll find a storage shed and a thoughtfully designed outdoor kitchen and entertainment area, ideal for hosting family and friends. The large screened-in back porch provides a comfortable space to unwind year-round while overlooking the scenic surroundings.

Step inside to discover a spacious, open, and updated kitchen that flows seamlessly into an expansive living room—perfectly designed for gathering and entertaining. The main level features three bedrooms and two bathrooms, including a generously sized primary suite with a large walk-in closet, offering both comfort and privacy.



**SMALLTOWN**  
HUNTING PROPERTIES  
& REAL ESTATE<sup>SM</sup>

**LUKE GOSSETT**

LAND SPECIALIST

C: 662-832-8822

O: 662-238-4077

[lgossett@smalltownproperties.com](mailto:lgossett@smalltownproperties.com)

50 CR 401 - Oxford, MS 38655

[smalltownproperties.com](http://smalltownproperties.com)

Information is believed to be accurate but not guaranteed.

# MORE ABOUT 268 BRYER LAKE ROAD

Upstairs, you'll find an additional bedroom and full bathroom, along with a spacious common area that provides flexibility for a second living space, playroom, or media area. There is also a bonus room currently being used as a weight room, offering endless possibilities to suit your needs.

With ample living space, incredible outdoor amenities, and lake access, this Pontotoc County property combines everyday comfort with the lifestyle you've been looking for. Don't miss the opportunity to make this beautiful home your own.

**Contact Luke Gossett today to schedule a private showing  
and make 268 Bryer Lake Road your new address.**



**SMALLTOWN**  
HUNTING PROPERTIES  
& REAL ESTATE<sup>SM</sup>

**LUKE GOSSETT**

LAND SPECIALIST

C: 662-832-8822

O: 662-238-4077

[lgossett@smalltownproperties.com](mailto:lgossett@smalltownproperties.com)

50 CR 401 - Oxford, MS 38655

[smalltownproperties.com](http://smalltownproperties.com)

Information is believed to be accurate but not guaranteed.



# SMALLTOWN

HUNTING PROPERTIES  
& REAL ESTATE<sup>SM</sup>

**LUKE GOSSETT**

LAND SPECIALIST

C: 662-832-8822

O: 662-238-4077

[lgossett@smalltownproperties.com](mailto:lgossett@smalltownproperties.com)

50 CR 401 - Oxford, MS 38655

[smalltownproperties.com](http://smalltownproperties.com)



# SMALLTOWN

HUNTING PROPERTIES  
& REAL ESTATE<sup>SM</sup>

**LUKE GOSSETT**

LAND SPECIALIST

C: 662-832-8822

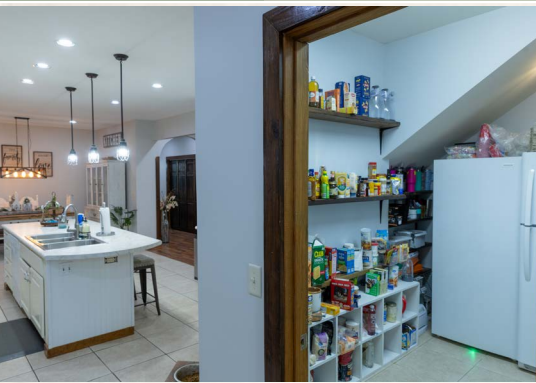
O: 662-238-4077

[lgossett@smalltownproperties.com](mailto:lgossett@smalltownproperties.com)

50 CR 401 - Oxford, MS 38655

[smalltownproperties.com](http://smalltownproperties.com)

*Information is believed to be accurate but not guaranteed.*



**SMALLTOWN**  
HUNTING PROPERTIES  
& REAL ESTATE<sup>SM</sup>

**LUKE GOSSETT**

LAND SPECIALIST

C: 662-832-8822

O: 662-238-4077

lgossett@smalltownproperties.com

50 CR 401 - Oxford, MS 38655

smalltownproperties.com



# SMALLTOWN

HUNTING PROPERTIES  
& REAL ESTATE<sup>SM</sup>

**LUKE GOSSETT**

LAND SPECIALIST

C: 662-832-8822

O: 662-238-4077

[lgossett@smalltownproperties.com](mailto:lgossett@smalltownproperties.com)

50 CR 401 - Oxford, MS 38655

[smalltownproperties.com](http://smalltownproperties.com)



**SMALLTOWN**  
 HUNTING PROPERTIES  
 & REAL ESTATE<sup>SM</sup>

**LUKE GOSSETT**

LAND SPECIALIST

C: 662-832-8822

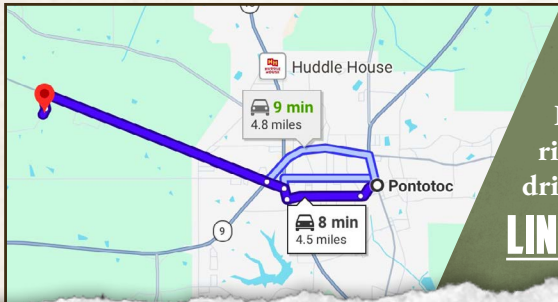
O: 662-238-4077

lgossett@smalltownproperties.com

50 CR 401 - Oxford, MS 38655

smalltownproperties.com

land id. LINK



Directions From Pontotoc, MS:  
 Travel on West Oxford Street for 2.8 miles. Turn left onto Bryer Lake Road and continue for 0.2 miles. Turn right to stay on Bryer Lake Road, and the driveway will be immediately on the left.

**LINK TO GOOGLE MAP DIRECTIONS**



**SMALLTOWN**  
 HUNTING PROPERTIES  
 & REAL ESTATE<sup>SM</sup>

**LUKE GOSSETT**

LAND SPECIALIST

C: 662-832-8822

O: 662-238-4077

lgossett@smalltownproperties.com

50 CR 401 - Oxford, MS 38655

smalltownproperties.com