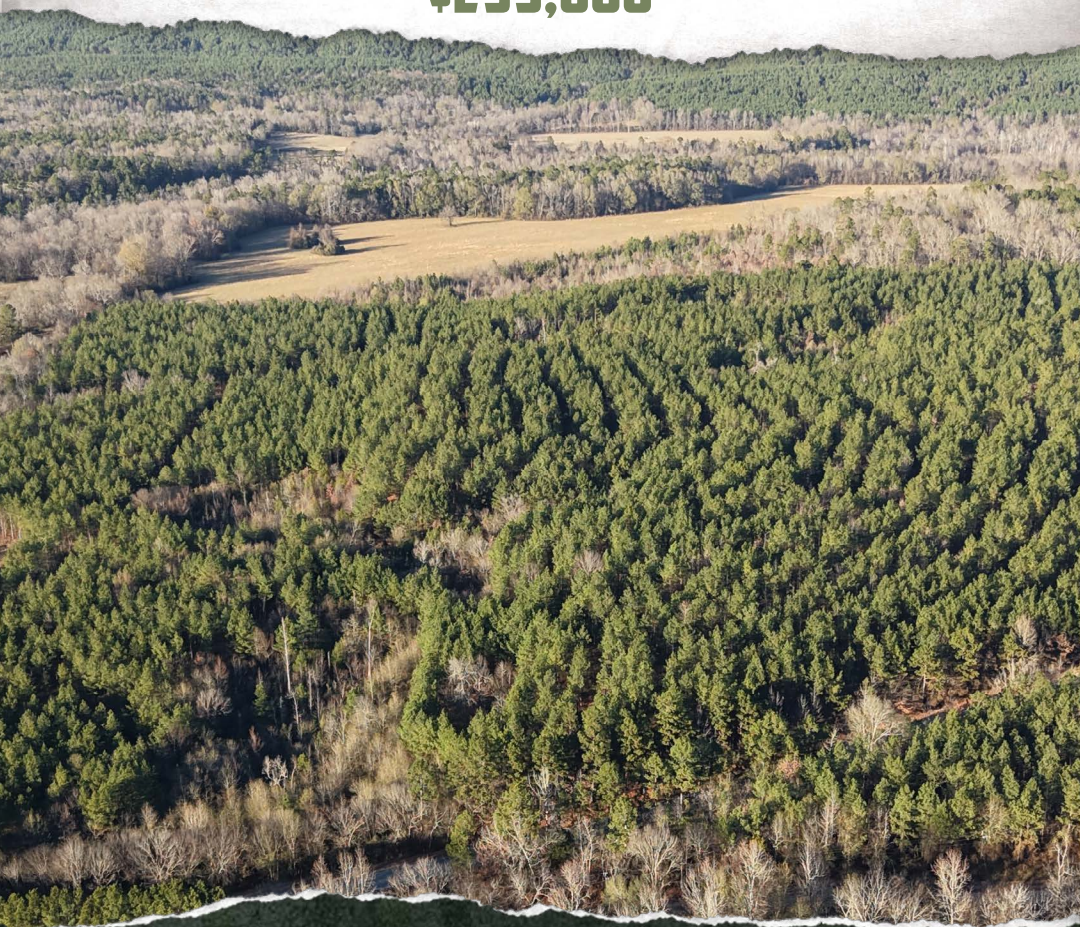




SMALLTOWN

HUNTING PROPERTIES
& REAL ESTATESM

60± ACRES
LEFLORE COUNTY, OK
\$299,000



WWW.SMALLTOWNPROPERTIES.COM | (479) 588-1034

THE LEFLORE 60

PROPERTY PROFILE

LOCATION:

- OK-144 Octavia, OK 74957
- LeFlore County
- 7± Miles NW of Smithville
- 14± Miles E of Honobia (Home of Bigfoot)
- 22± Miles NW of Cove, AR
- 42± Miles N of Beavers Bend State Park
- 53± Miles S of Poteau
- 179± Miles SE of Tulsa
- 220± Miles NE of Dallas, TX
- 229± Miles SE of Oklahoma City

COORDINATES:

- 34.5254, -94.71195

PROPERTY USE:

- Hunting
- Recreational
- Timber Investment
- Potential Home/Cabin Sites

PROPERTY INFORMATION:

- 60± Acres
- 100% Timberland
- Wet Weather Creek
- Frontage on OK-144
- Electricity and Water Available

TAX INFORMATION:

- Parcel:
0000-30-01N-25E-0-011-00
- TBD



LUKE ALSTON, ALC | EXECUTIVE BROKER - AR
MANAGING BROKER - OK, ASSOCIATE BROKER - LA
C: 479-234-1376 | lukealston@smalltownproperties.com

MARISSA NICHOLS | LAND & RESIDENTIAL SPECIALIST
C: 580-306-5671 | marissa@smalltownproperties.com

5607 Hwy 71 South - Cove, AR 71937 | O: 479-588-1034 | smalltownproperties.com

Information is believed to be accurate but not guaranteed.

WELCOME TO THE LEFLORE 60

WELCOME TO THE LEFLORE 60, LOCATED IN SOUTHEAST OKLAHOMA NEAR THE TOWN OF OCTAVIA, This 60± acre surveyed tract is 100% timber covered, the majority of which is recently thinned planted pine, which will hugely benefit the next owner, as the dollars will grow at a rapid pace. The perimeter of the Leflore County tract is cleared.

The land has access to electricity and rural water for the investor or homeowner looking to build. This area is known for cabin rentals, and the property is primed for that venture. Mountain views and a wet weather creek provide a serene atmosphere. For the hunter looking for a place to hang a stand or set up a blind, the land is covered up in deer.

Take advantage of a great opportunity!
Contact **Luke Alston** or **MaRissa Nichols** today to schedule
a private tour and experience #TheSmallTownWay!



LUKE ALSTON, ALC | EXECUTIVE BROKER - AR
MANAGING BROKER - OK, ASSOCIATE BROKER - LA
C: 479-234-1376 | lukealston@smalltownproperties.com

MARISSA NICHOLS | LAND & RESIDENTIAL SPECIALIST
C: 580-306-5671 | marissa@smalltownproperties.com

5607 Hwy 71 South - Cove, AR 71937 | O: 479-588-1034 | smalltownproperties.com

Information is believed to be accurate but not guaranteed.

60± ACRES

LEFLORE COUNTY, OKLAHOMA



LUKE ALSTON, ALC | EXECUTIVE BROKER - AR
MANAGING BROKER - OK, ASSOCIATE BROKER - LA
C: 479-234-1376 | lukealston@smalltownproperties.com

MARISSA NICHOLS | LAND & RESIDENTIAL SPECIALIST
C: 580-306-5671 | marissa@smalltownproperties.com

5607 Hwy 71 South - Cove, AR 71937 | O: 479-588-1034 | smalltownproperties.com

Information is believed to be accurate but not guaranteed.

60± ACRES

LEFLORE COUNTY, OKLAHOMA



LUKE ALSTON, ALC | EXECUTIVE BROKER - AR
MANAGING BROKER - OK, ASSOCIATE BROKER - LA
C: 479-234-1376 | lukealston@smalltownproperties.com

MARISSA NICHOLS | LAND & RESIDENTIAL SPECIALIST
C: 580-306-5671 | marissa@smalltownproperties.com

5607 Hwy 71 South - Cove, AR 71937 | O: 479-588-1034 | smalltownproperties.com

Information is believed to be accurate but not guaranteed.

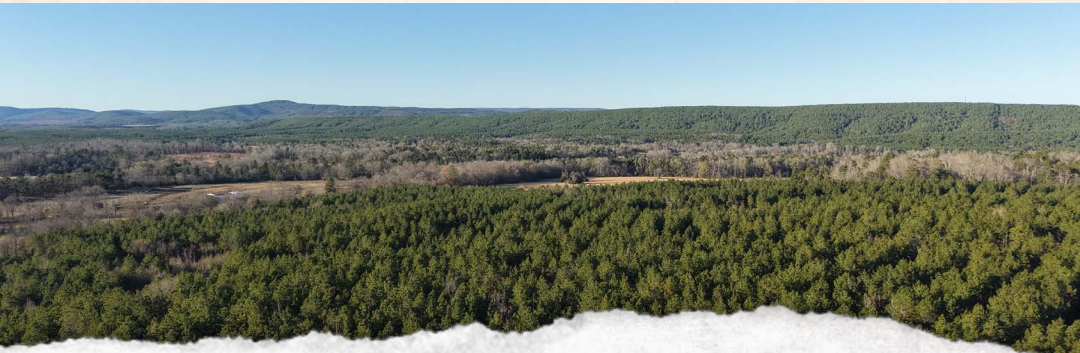
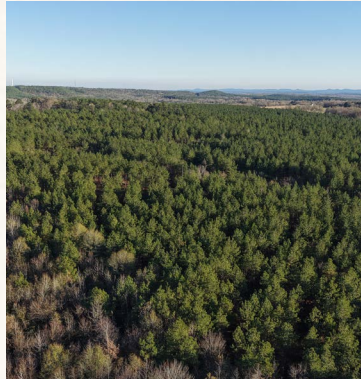
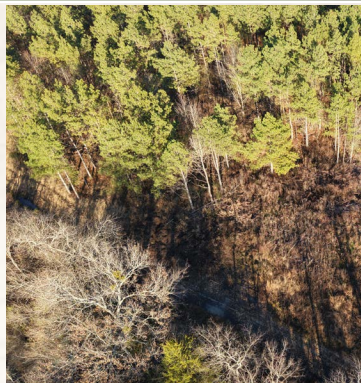


LUKE ALSTON, ALC | EXECUTIVE BROKER - AR
MANAGING BROKER - OK, ASSOCIATE BROKER - LA
C: 479-234-1376 | lukealston@smalltownproperties.com

MARISSA NICHOLS | LAND & RESIDENTIAL SPECIALIST
C: 580-306-5671 | marissa@smalltownproperties.com

60± ACRES

LEFLORE COUNTY, OKLAHOMA



LUKE ALSTON, ALC | EXECUTIVE BROKER - AR
MANAGING BROKER - OK, ASSOCIATE BROKER - LA
C: 479-234-1376 | lukealston@smalltownproperties.com

MARISSA NICHOLS | LAND & RESIDENTIAL SPECIALIST
C: 580-306-5671 | marissa@smalltownproperties.com

5607 Hwy 71 South - Cove, AR 71937 | O: 479-588-1034 | smalltownproperties.com

Information is believed to be accurate but not guaranteed.

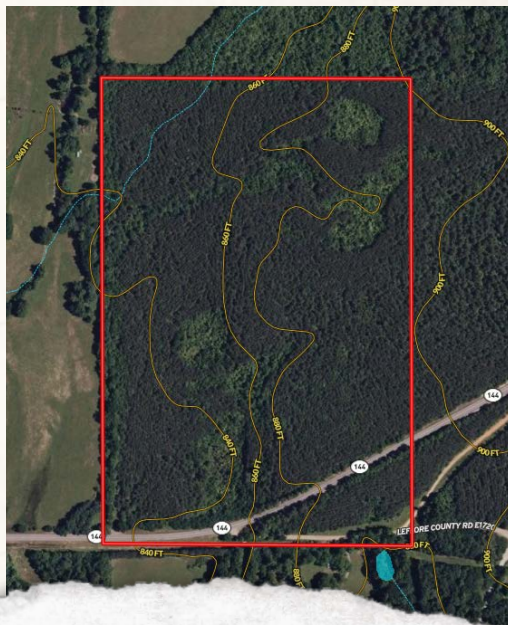
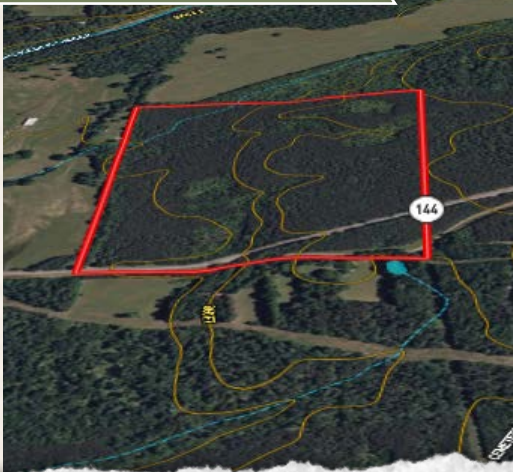
60± ACRES

LEFLORE COUNTY, OKLAHOMA



Property Lines are Approximate

TOPOGRAPHY MAP



LUKE ALSTON, ALC | EXECUTIVE BROKER - AR
 MANAGING BROKER - OK, ASSOCIATE BROKER - LA
 C: 479-234-1376 | lukealston@smalltownproperties.com

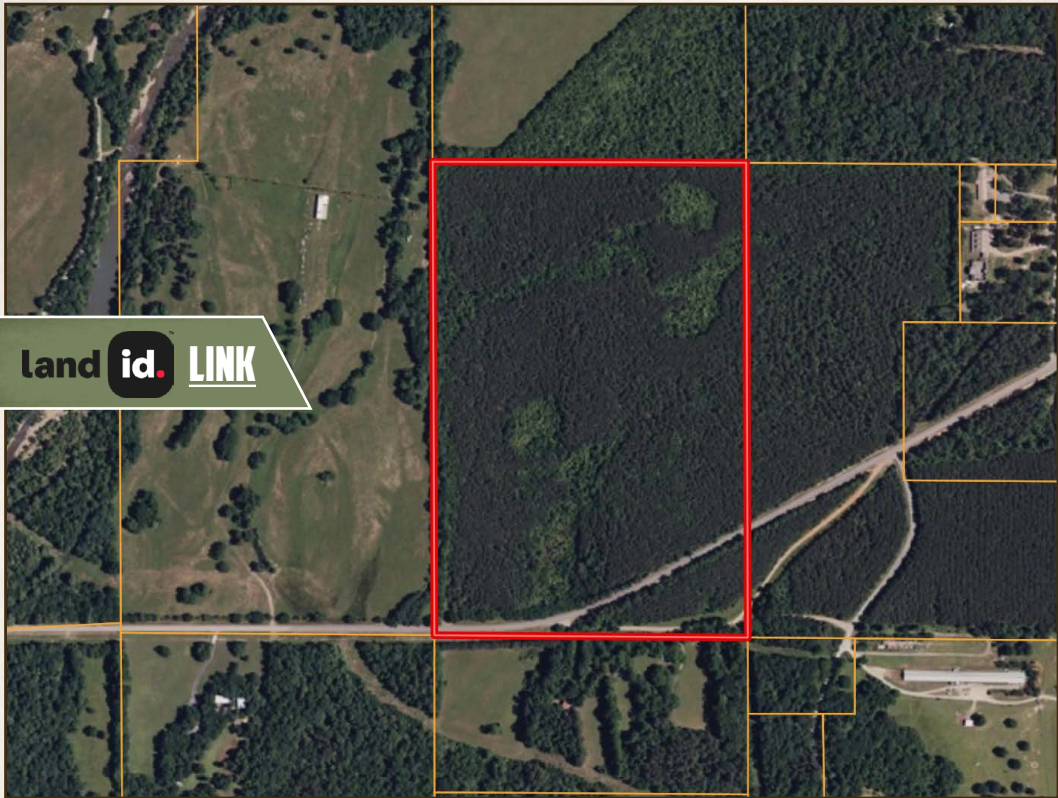
MARISSA NICHOLS | LAND & RESIDENTIAL SPECIALIST
 C: 580-306-5671 | marissa@smalltownproperties.com

5607 Hwy 71 South - Cove, AR 71937 | O: 479-588-1034 | smalltownproperties.com

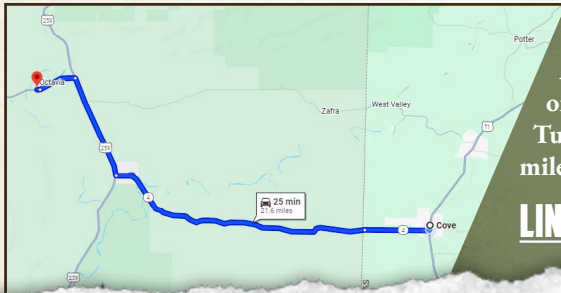
Information is believed to be accurate but not guaranteed.

60± ACRES

LEFLORE COUNTY, OKLAHOMA



land id. LINK



Directions from Cove, AR: Travel on AR-4 W/OK-4 W for 15 miles. Turn right onto US-259 N and continue for 4.7 miles. Turn left onto OK-144 W and proceed for 1.7 miles. The destination will be on the right.

[LINK TO GOOGLE MAP DIRECTIONS](#)



SMALLTOWN
HUNTING PROPERTIES
& REAL ESTATE™



LUKE ALSTON, ALC | EXECUTIVE BROKER - AR
MANAGING BROKER - OK, ASSOCIATE BROKER - LA
C: 479-234-1376 | lukealston@smalltownproperties.com

MARISSA NICHOLS | LAND & RESIDENTIAL SPECIALIST
C: 580-306-5671 | marissa@smalltownproperties.com

5607 Hwy 71 South - Cove, AR 71937 | O: 479-588-1034 | smalltownproperties.com

Information is believed to be accurate but not guaranteed.