



# SMALLTOWN

HUNTING PROPERTIES  
& REAL ESTATE<sup>SM</sup>

**11.6± ACRES**  
**HINDS COUNTY, MS**  
**\$85,000**

OFFICE (662) 238-4077 | [WWW.SMALLTOWNPROPERTIES.COM](http://WWW.SMALLTOWNPROPERTIES.COM)



# THE HINDS 11.6

## PROPERTY PROFILE

### LOCATION:

- Pine Lake Drive  
Terry, MS 39170
- Springwood Acres Community
- Hinds County
- 8.8± Miles SE of Raymond
- 17.8± N of Crystal Springs
- 18± Miles SW of the  
Jackson Metro Area

### TAX INFORMATION:

- \$907.57 for 2024

### PROPERTY USE:

- Possible Home Site
- Recreational
- Investment

### COORDINATES:

- 32.17963, -90.35707

### PROPERTY INFORMATION:

- 11.6± Acres
- Dead-End Road
- Frontage on Springwood Lake
- Hardwood Timber
- Deer & Small Game



HUNTER ROBISON | LAND SPECIALIST  
C: 662-816-7987 | hrobison@smalltownproperties.com

[smalltownproperties.com](https://smalltownproperties.com)

BRADEN SMITH | LAND SPECIALIST  
C: 601-757-9193 | braden@smalltownproperties.com

50 CR 401 - Oxford, MS 38655 | O: 662-238-4077

Information is believed to be accurate but not guaranteed.

4848 Main St. - Flora, MS 39071 | O: 769-888-2522

# WELCOME TO THE HINDS 11.6

**WELCOME TO THE HINDS 11.6.** Located in Terry, MS, within the Springwood Acres HOA, this 11.6± acre property offers a great opportunity to build your home in a peaceful, private setting. Situated at the end of Pine Lake Drive, the land features approximately 750 feet of frontage on Springwood Lake. You will find an ideal homesite in the northwest corner, leaving plenty of wooded land to enjoy. The property is loaded with wildlife, especially whitetail deer, making it perfect for hunting or just enjoying the great outdoors. With lake frontage and abundant outdoor opportunities, the Hinds 11.6 is a great place to call home.

**Contact Hunter Robison or Braden Smith today to learn more!**



**HUNTER ROBISON** | LAND SPECIALIST  
C: 662-816-7987 | [hrobison@smalltownproperties.com](mailto:hrobison@smalltownproperties.com)

[smalltownproperties.com](http://smalltownproperties.com)

**BRADEN SMITH** | LAND SPECIALIST  
C: 601-757-9193 | [braden@smalltownproperties.com](mailto:braden@smalltownproperties.com)

50 CR 401 - Oxford, MS 38655 | O: 662-238-4077

Information is believed to be accurate but not guaranteed.

4848 Main St. - Flora, MS 39071 | O: 769-888-2522



**11.6± ACRES**

**HINDS COUNTY, MISSISSIPPI**



**HUNTER ROBISON** | LAND SPECIALIST  
C: 662-816-7987 | [hrobison@smalltownproperties.com](mailto:hrobison@smalltownproperties.com)

[smalltownproperties.com](http://smalltownproperties.com)

**BRADEN SMITH** | LAND SPECIALIST  
C: 601-757-9193 | [braden@smalltownproperties.com](mailto:braden@smalltownproperties.com)

50 CR 401 - Oxford, MS 38655 | O: 662-238-4077

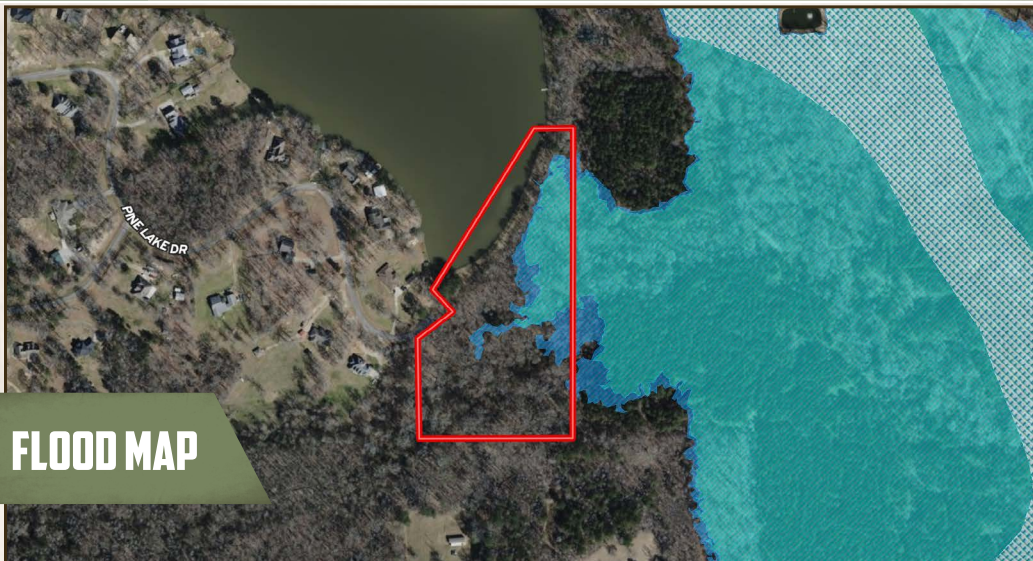
Information is believed to be accurate but not guaranteed.

4848 Main St. - Flora, MS 39071 | O: 769-888-2522



11.6± ACRES

HINDS COUNTY, MISSISSIPPI



## FLOOD MAP



## TOPOGRAPHY MAP



HUNTER ROBISON | LAND SPECIALIST  
C: 662-816-7987 | hrobison@smalltownproperties.com

[smalltownproperties.com](http://smalltownproperties.com)

BRADEN SMITH | LAND SPECIALIST  
C: 601-757-9193 | braden@smalltownproperties.com

50 CR 401 - Oxford, MS 38655 | O: 662-238-4077

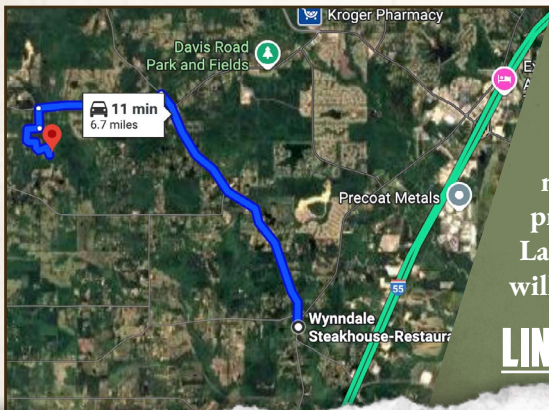
Information is believed to be accurate but not guaranteed.

4848 Main St. - Flora, MS 39071 | O: 769-888-2522



11.6± ACRES

HINDS COUNTY, MISSISSIPPI



**Directions** From Wynnendale Steakhouse in Terry, MS: Travel 3.9 miles on Springridge Road. Turn left onto Owens Road and continue 1.8 miles. Turn left onto Oak Hill Drive and proceed 0.3 miles. Turn right onto Pine Lake Drive and in 0.8 miles the destination will be at the dead-end on the right.

**LINK TO GOOGLE MAP DIRECTIONS**



**HUNTER ROBISON** | LAND SPECIALIST  
C: 662-816-7987 | hrobison@smalltownproperties.com



[smalltownproperties.com](http://smalltownproperties.com)



**BRADEN SMITH** | LAND SPECIALIST  
C: 601-757-9193 | braden@smalltownproperties.com

50 CR 401 - Oxford, MS 38655 | O: 662-238-4077

Information is believed to be accurate but not guaranteed.

4848 Main St. - Flora, MS 39071 | O: 769-888-2522