



19.02± ACRES
COPIAH COUNTY, MS
\$114,120



SMALLTOWN
HUNTING PROPERTIES
& REAL ESTATESM

OFFICE (769) 888-2522

THE COPIAH 19.02

PROPERTY PROFILE

LOCATION:

- Sumrall Road
Crystal Springs, MS 39059
- Copiah County
- 7.2± Miles W of Crystal Springs
- 30± Miles SW of the
Jackson Metro Area

COORDINATES:

- 31.9786, -90.4588

PROPERTY INFORMATION:

- 19.02± Acres
- Established Roads
- Hardwood/Pine Mix
- Beautiful Home Place
- Food Plot
- Box Stand
- Additional Acreage Available

PROPERTY USE:

- Recreation
- Hunting
- Investment
- Potential Home Site

TAX INFORMATION:

- TBD



SMALLTOWN
HUNTING PROPERTIES
& REAL ESTATESM

LUKE SANDERS

LAND SPECIALIST

C: 601-953-3535

O: 769-888-2522

luke@smalltownproperties.com

4848 Main St. - Flora, MS 39071

smalltownproperties.com

Information is believed to be accurate but not guaranteed.

WELCOME TO THE COPIAH 19.02

OFFERING THE PERFECT MIX OF SECLUSION AND CONVENIENCE, THE COPIAH 19.02 IS WORTH CONSIDERING! This 19.02± acre tract sits off Sumrall Road in Copiah County, just seven miles from the town of Crystal Springs. The property consists of mixed pines and hardwoods with an interior road in place for easy access to a beautiful home site. With an established food plot and box stand, this tract is ready for hunting or outdoor enjoyment. Calling Panther WMA, located directly across the road, provides a great opportunity for someone to put in for their draws! If you have been looking for a smaller, manageable piece of land with outstanding recreational and investment potential, the Copiah 19.02 is ready to meet your needs. Additional acreage is available.

Contact Luke Sanders today to set up your private tour.



SMALLTOWN
HUNTING PROPERTIES
& REAL ESTATESM

LUKE SANDERS

LAND SPECIALIST

C: 601-953-3535

O: 769-888-2522

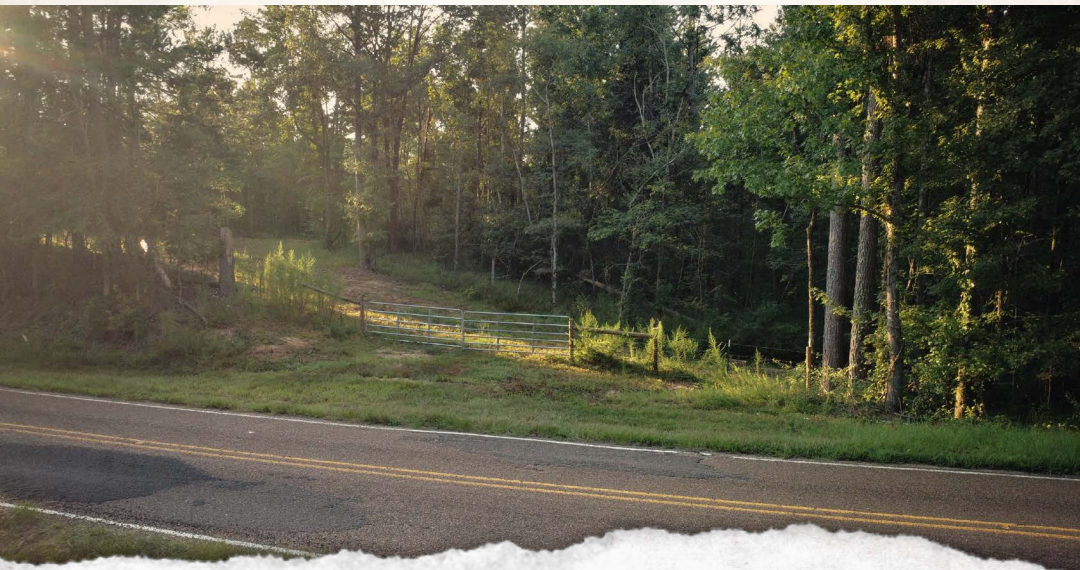
luke@smalltownproperties.com

4848 Main St. - Flora, MS 39071

smalltownproperties.com

Information is believed to be accurate but not guaranteed.

19.02± ACRES **COPIAH COUNTY, MISSISSIPPI**



SMALLTOWN
HUNTING PROPERTIES
& REAL ESTATESM

LUKE SANDERS

LAND SPECIALIST

C: 601-953-3535

O: 769-888-2522

luke@smalltownproperties.com

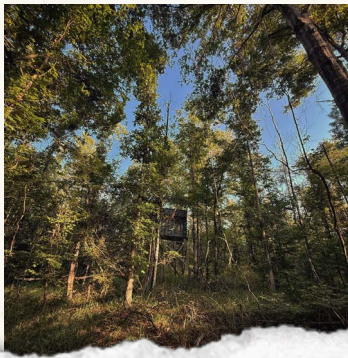
4848 Main St. - Flora, MS 39071

smalltownproperties.com

Information is believed to be accurate but not guaranteed.

19.02± ACRES

COPIAH COUNTY, MISSISSIPPI



SMALLTOWN
HUNTING PROPERTIES
& REAL ESTATESM

LUKE SANDERS

LAND SPECIALIST

C: 601-953-3535

O: 769-888-2522

luke@smalltownproperties.com

4848 Main St. - Flora, MS 39071

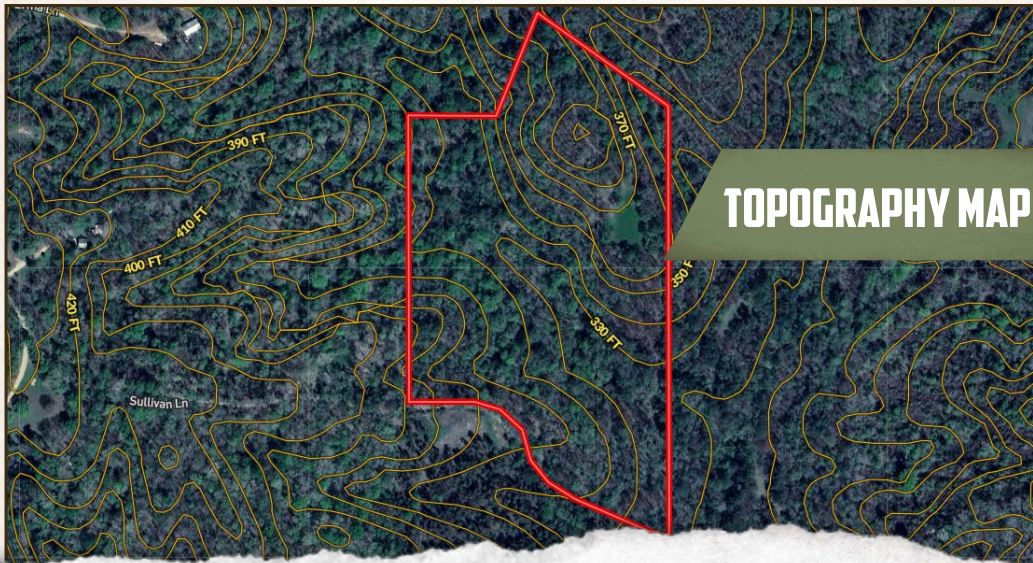
smalltownproperties.com

Information is believed to be accurate but not guaranteed.

19.02± ACRES

COPIAH COUNTY, MISSISSIPPI

land id. LINK



TOPOGRAPHY MAP



SMALLTOWN
HUNTING PROPERTIES
& REAL ESTATESM

LUKE SANDERS

LAND SPECIALIST

C: 601-953-3535

O: 769-888-2522

luke@smalltownproperties.com

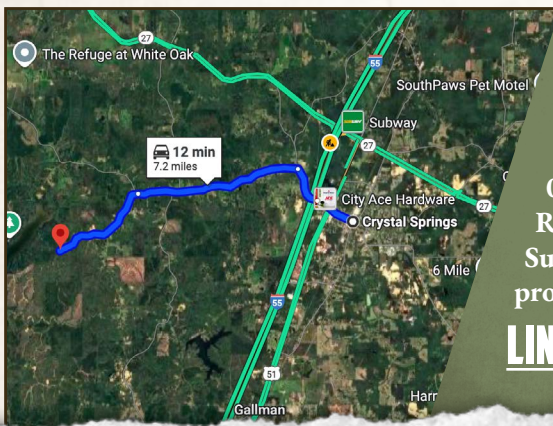
4848 Main St. - Flora, MS 39071

smalltownproperties.com

Information is believed to be accurate but not guaranteed.

19.02± ACRES

COPIAH COUNTY, MISSISSIPPI



Directions From Exit #72 off I-55 in Crystal Springs, MS: Travel 0.6 miles northwest on Hwy 27. Turn left on Rhymes Road and proceed 0.8 miles. Turn left on Utica Road and continue 0.5 miles. Turn right on New Zion Road and travel 3.4 miles. Turn left on Sumrall Road and proceed 2.2 miles to the property on the left.

[LINK TO GOOGLE MAP DIRECTIONS](#)



SMALLTOWN
HUNTING PROPERTIES
& REAL ESTATESM

LUKE SANDERS

LAND SPECIALIST

C: 601-953-3535

O: 769-888-2522

luke@smalltownproperties.com

4848 Main St. - Flora, MS 39071

smalltownproperties.com

Information is believed to be accurate but not guaranteed.