

7.31± ACRES
COPIAH COUNTY, MS
\$54,825



SMALLTOWN
HUNTING PROPERTIES
& REAL ESTATE SM

OFFICE (769) 888-2522

THE COPIAH 7.31

PROPERTY PROFILE

LOCATION:

- Sumrall Road
Crystal Springs, MS 39059
- Copiah County
- 7.2± Miles W of Crystal Springs
- 30± Miles SW of the
Jackson Metro Area

COORDINATES:

- 31.9786, -90.4588

PROPERTY USE:

- Recreation
- Hunting
- Investment
- Potential Home Site

PROPERTY INFORMATION:

- 7.31± Acres
- Established Roads
- Food Plot
- Mix of Hardwoods & Pines
- Beautiful Home Place
- Additional Acreage Available

TAX INFORMATION:

- TBD



SMALLTOWN
HUNTING PROPERTIES
& REAL ESTATESM

LUKE SANDERS

LAND SPECIALIST

C: 601-953-3535

O: 769-888-2522

luke@smalltownproperties.com

4848 Main St. - Flora, MS 39071

smalltownproperties.com

Information is believed to be accurate but not guaranteed.

WELCOME TO THE COPIAH 7.31

ARE YOU ON THE HUNT FOR A SMALLER, MANAGEABLE PIECE OF LAND WITH GREAT RECREATIONAL AND INVESTMENT POTENTIAL? End your search at the Copiah 7.31! This 7.31± acre tract, situated off Sumrall Road in Copiah County, MS, offers the perfect mix of seclusion and convenience, being just seven miles from Crystal Springs. The property is made up of beautiful pine and mixed hardwood timber with an interior road in place for quick access to a beautiful home site. An established food plot makes this property ready for hunting or outdoor enjoyment, and with Calling Panther WMA located directly across the road, it provides an outstanding opportunity for someone to put in for their draws! Additional acreage is available.

**The Copiah 7.31 is worth considering.
Call Luke Sanders today to learn more!**



SMALLTOWN
HUNTING PROPERTIES
& REAL ESTATESM

LUKE SANDERS

LAND SPECIALIST

C: 601-953-3535

O: 769-888-2522

luke@smalltownproperties.com

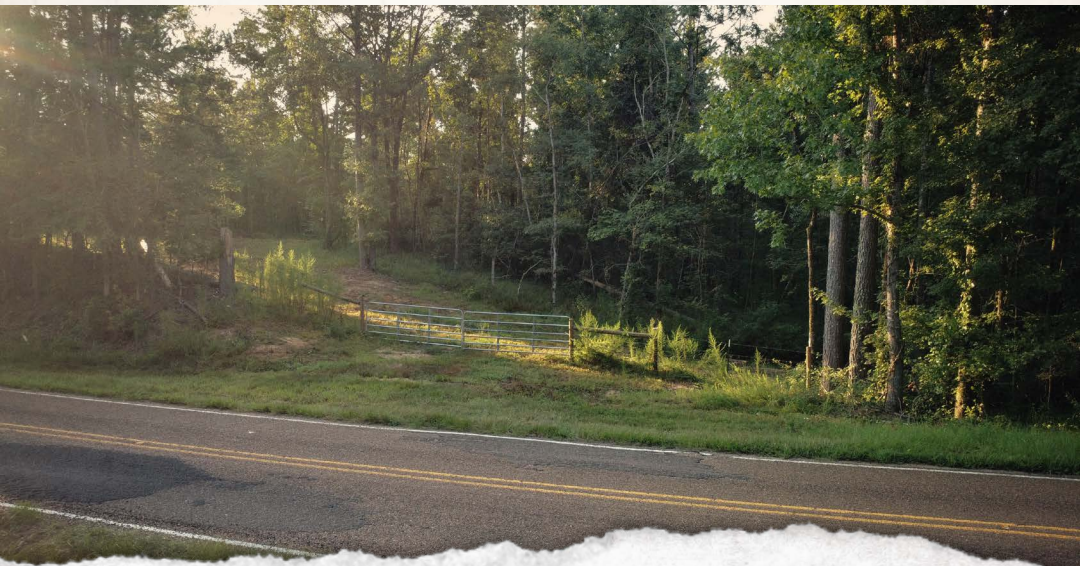
4848 Main St. - Flora, MS 39071

smalltownproperties.com

Information is believed to be accurate but not guaranteed.

7.31± ACRES

COPIAH COUNTY, MISSISSIPPI



SMALLTOWN
HUNTING PROPERTIES
& REAL ESTATESM

LUKE SANDERS

LAND SPECIALIST

C: 601-953-3535

O: 769-888-2522

luke@smalltownproperties.com

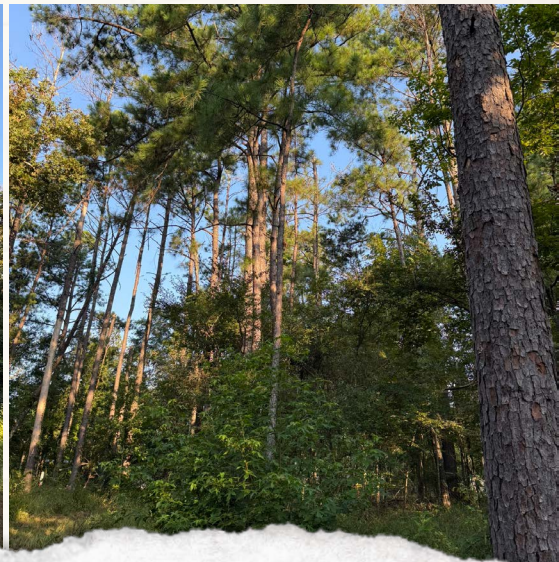
4848 Main St. - Flora, MS 39071

smalltownproperties.com

Information is believed to be accurate but not guaranteed.

7.31± ACRES

COPIAH COUNTY, MISSISSIPPI



SMALLTOWN
HUNTING PROPERTIES
& REAL ESTATESM

LUKE SANDERS

LAND SPECIALIST

C: 601-953-3535

O: 769-888-2522

luke@smalltownproperties.com

4848 Main St. - Flora, MS 39071

smalltownproperties.com

Information is believed to be accurate but not guaranteed.

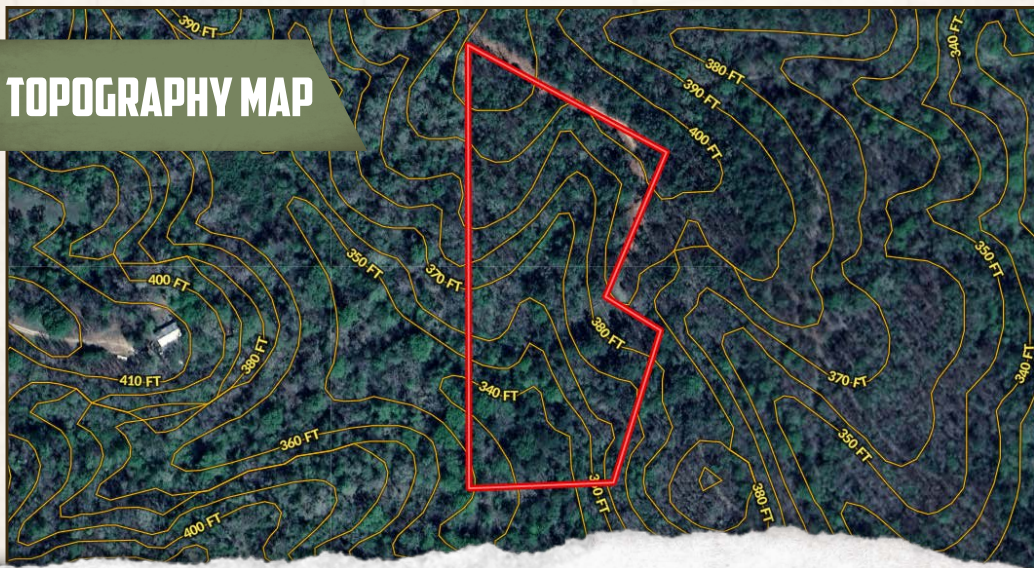
7.31± ACRES

COPIAH COUNTY, MISSISSIPPI

land id. LINK



TOPOGRAPHY MAP



SMALLTOWN
HUNTING PROPERTIES
& REAL ESTATESM

LUKE SANDERS

LAND SPECIALIST

C: 601-953-3535

O: 769-888-2522

luke@smalltownproperties.com

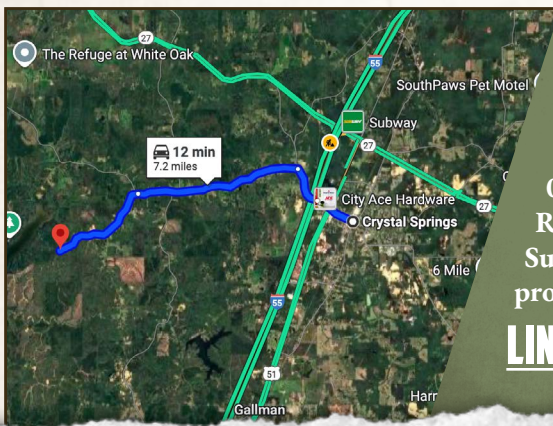
4848 Main St. - Flora, MS 39071

smalltownproperties.com

Information is believed to be accurate but not guaranteed.

7.31± ACRES

COPIAH COUNTY, MISSISSIPPI



Directions From Exit #72 off I-55 in Crystal Springs, MS: Travel 0.6 miles northwest on Hwy 27. Turn left on Rhymes Road and proceed 0.8 miles. Turn left on Utica Road and continue 0.5 miles. Turn right on New Zion Road and travel 3.4 miles. Turn left on Sumrall Road and proceed 2.2 miles to the property on the left.

[LINK TO GOOGLE MAP DIRECTIONS](#)



SMALLTOWN
HUNTING PROPERTIES
& REAL ESTATESM

LUKE SANDERS

LAND SPECIALIST

C: 601-953-3535

O: 769-888-2522

luke@smalltownproperties.com

4848 Main St. - Flora, MS 39071

smalltownproperties.com

Information is believed to be accurate but not guaranteed.