

69.3± ACRES
PONTOTOC COUNTY, MS
\$229,900



SMALLTOWN
HUNTING PROPERTIES
& REAL ESTATE™

OFFICE (769) 888-2522 | WWW.SMALLTOWNPROPERTIES.COM

THE PONTOTOC 69.3

PROPERTY PROFILE

LOCATION:

- MS-41 S
Pontotoc, MS 38863
- Pontotoc County
- 7.5± Miles SE of Pontotoc

COORDINATES:

- 34.1669, -88.9309

PROPERTY USE:

- Recreational
- Investment
- Hunting
- Potential Home/Cabin Site

PROPERTY INFORMATION:

- 69.3± Acres
- Mixed Timber
- Gated Access
- Road Frontage
- Internal Road System
- Established Food Plots
- Utilities Nearby
- Features a Ready-To-Build House Lot

TAX INFORMATION:

- Parcel #1: 117-36-000-018
- \$216.69 (2025)



MICHAEL OSWALT, ALC | PRINCIPAL BROKER
C: 662-719-3967 | michael@smalltownproperties.com

HARRISON EATON | LAND SPECIALIST
C: 662-401-9472 | harrison@smalltownproperties.com

Information is believed to be accurate but not guaranteed.

4848 Main St. - Flora, MS 39071 | O: 769-888-2522

smalltownproperties.com

50 CR 401 - Oxford, MS 38655 | O: 662-238-4077

WELCOME TO THE PONTOTOC 69.3

WELCOME TO THE PONTOTOC 69.3, LOCATED JUST 7.5± MILES FROM DOWNTOWN PONTOTOC. This 69.3± acre tract in Pontotoc County, Mississippi, offers a well-balanced mix of hardwoods and pines, making it an excellent recreational and hunting property. The land features established food plots and a healthy turkey and deer population, providing great opportunities for outdoor enthusiasts.

With convenient frontage on Highway 41, along with an internal road system for easy access throughout the property, the Pontotoc 69.3 is both accessible and functional. Gated access adds an extra layer of privacy and security, making it a great option for a weekend getaway or long-term investment. The Pontotoc 69.3 offers homesite potential with power provided by Pontotoc Electric.

If you are looking for a hunting or recreational tract with homesite potential, contact Michael Oswalt or Harrison Eaton for a private showing and experience #TheSmallTownWay.



MICHAEL OSWALT, ALC | PRINCIPAL BROKER
C: 662-719-3967 | michael@smalltownproperties.com

HARRISON EATON | LAND SPECIALIST
C: 662-401-9472 | harrison@smalltownproperties.com

4848 Main St. - Flora, MS 39071 | O: 769-888-2522

smalltownproperties.com

50 CR 401 - Oxford, MS 38655 | O: 662-238-4077

69.3± ACRES

PONTOTOC COUNTY, MISSISSIPPI



SMALLTOWN
HUNTING PROPERTIES
& REAL ESTATE™



MICHAEL OSWALT, ALC | PRINCIPAL BROKER
C: 662-719-3967 | michael@smalltownproperties.com

HARRISON EATON | LAND SPECIALIST
C: 662-401-9472 | harrison@smalltownproperties.com

Information is believed to be accurate but not guaranteed.

4848 Main St. - Flora, MS 39071 | O: 769-888-2522

smalltownproperties.com

50 CR 401 - Oxford, MS 38655 | O: 662-238-4077

69.3± ACRES

PONTOTOC COUNTY, MISSISSIPPI



SMALLTOWN
HUNTING PROPERTIES
& REAL ESTATE™



MICHAEL OSWALT, ALC | PRINCIPAL BROKER
C: 662-719-3967 | michael@smalltownproperties.com

HARRISON EATON | LAND SPECIALIST
C: 662-401-9472 | harrison@smalltownproperties.com

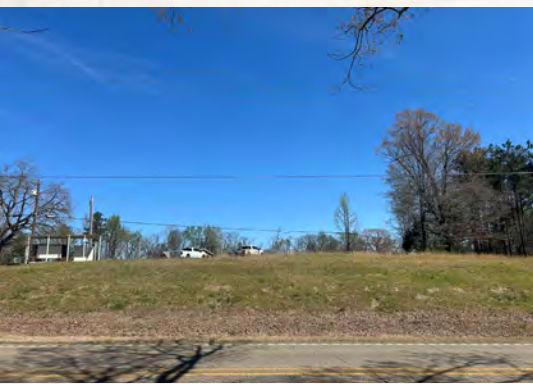
Information is believed to be accurate but not guaranteed.
smalltownproperties.com

4848 Main St. - Flora, MS 39071 | O: 769-888-2522

50 CR 401 - Oxford, MS 38655 | O: 662-238-4077

69.3± ACRES

PONTOTOC COUNTY, MISSISSIPPI



MICHAEL OSWALT, ALC | PRINCIPAL BROKER
C: 662-719-3967 | michael@smalltownproperties.com

HARRISON EATON | LAND SPECIALIST
C: 662-401-9472 | harrison@smalltownproperties.com

Information is believed to be accurate but not guaranteed.
smalltownproperties.com

4848 Main St. - Flora, MS 39071 | O: 769-888-2522

50 CR 401 - Oxford, MS 38655 | O: 662-238-4077

69.3± ACRES

PONTOTOC COUNTY, MISSISSIPPI



MICHAEL OSWALT, ALC | PRINCIPAL BROKER
C: 662-719-3967 | michael@smalltownproperties.com

HARRISON EATON | LAND SPECIALIST
C: 662-401-9472 | harrison@smalltownproperties.com

4848 Main St. - Flora, MS 39071 | O: 769-888-2522

smalltownproperties.com

50 CR 401 - Oxford, MS 38655 | O: 662-238-4077

Information is believed to be accurate but not guaranteed.

69.3± ACRES

PONTOTOC COUNTY, MISSISSIPPI



MICHAEL OSWALT, ALC | PRINCIPAL BROKER
C: 662-719-3967 | michael@smalltownproperties.com

HARRISON EATON | LAND SPECIALIST
C: 662-401-9472 | harrison@smalltownproperties.com

4848 Main St. - Flora, MS 39071 | O: 769-888-2522

smalltownproperties.com

50 CR 401 - Oxford, MS 38655 | O: 662-238-4077

Information is believed to be accurate but not guaranteed.

69.3± ACRES

PONTOTOC COUNTY, MISSISSIPPI



SMALLTOWN
HUNTING PROPERTIES
& REAL ESTATE™



MICHAEL OSWALT, ALC | PRINCIPAL BROKER
C: 662-719-3967 | michael@smalltownproperties.com

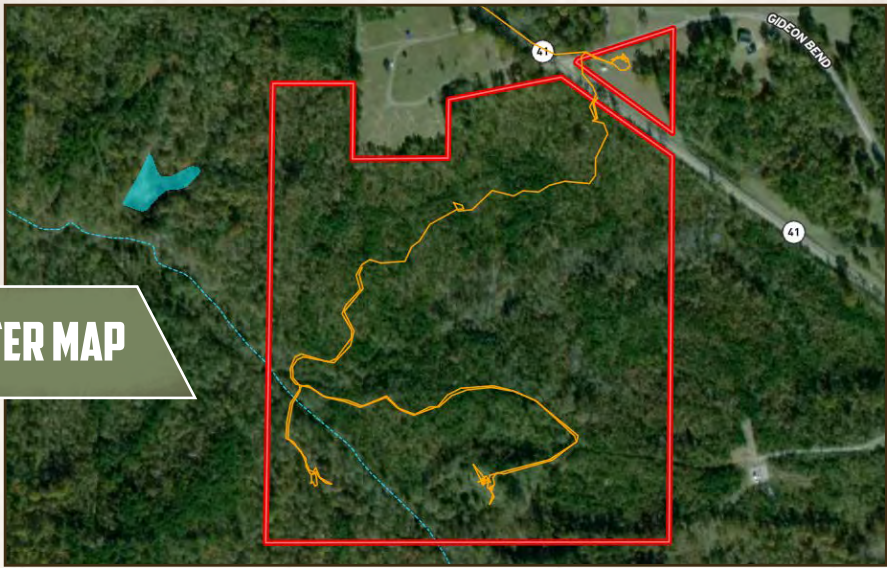
HARRISON EATON | LAND SPECIALIST
C: 662-401-9472 | harrison@smalltownproperties.com

4848 Main St. - Flora, MS 39071 | O: 769-888-2522

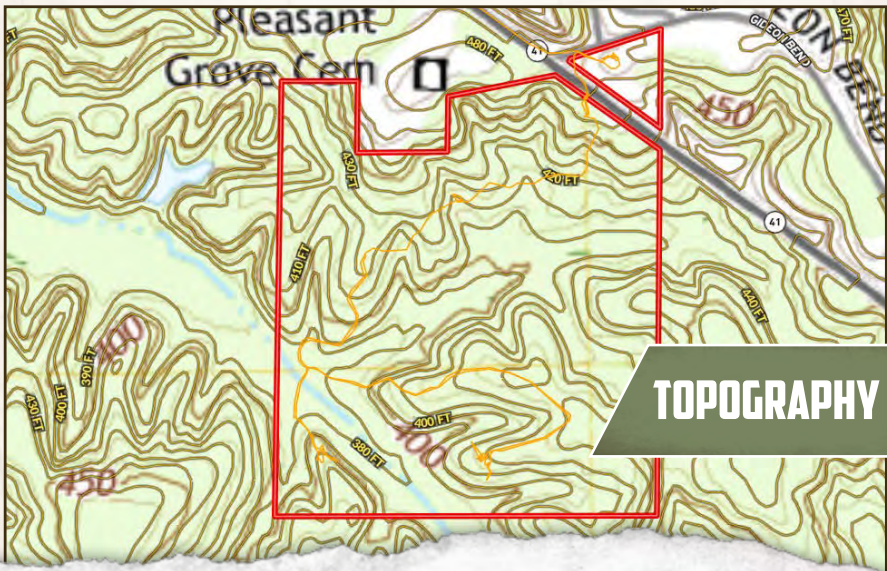
smalltownproperties.com

50 CR 401 - Oxford, MS 38655 | O: 662-238-4077

Information is believed to be accurate but not guaranteed.



WATER MAP



TOPOGRAPHY MAP



SMALLTOWN
HUNTING PROPERTIES
& REAL ESTATE™

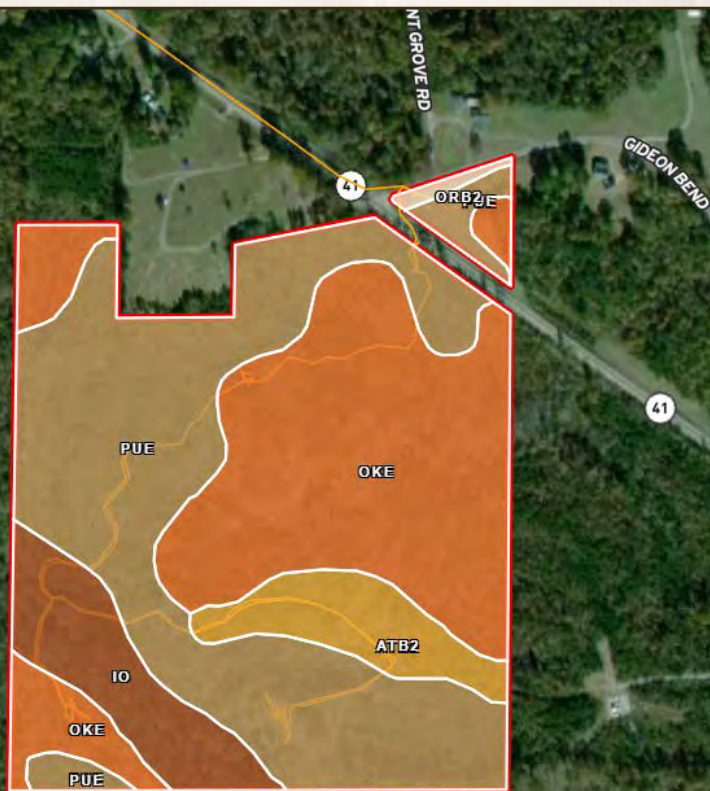


MICHAEL OSWALT, ALC | PRINCIPAL BROKER
C: 662-719-3967 | michael@smalltownproperties.com

HARRISON EATON | LAND SPECIALIST
C: 662-401-9472 | harrison@smalltownproperties.com

Information is believed to be accurate but not guaranteed.

SOIL MAP



SOIL CODE	SOIL DESCRIPTION	ACRES	%	CPI	NCCPI	CAP
PuE	Providence-Gullied land complex, 17 to 30 percent slopes	31.37	43.75	0	7	7e
OKE	Oktibbeha-Ruston association, hilly (oktibbeha, smithdale)	28.21	39.34	0	23	7e
IO	Iuka and Ochlockonee soils	6.73	9.39	0	81	2w
ATB2	Atwood silt loam, 2 to 5 percent slopes, moderately eroded	5.02	7.0	0	54	2e
OrB2	Ora loam, 2 to 5 percent slopes, eroded	0.38	0.53	0	58	2e
TOTALS		71.71	100%	-	23.8	6.15



MICHAEL OSWALT, ALC | PRINCIPAL BROKER
C: 662-719-3967 | michael@smalltownproperties.com

HARRISON EATON | LAND SPECIALIST
C: 662-401-9472 | harrison@smalltownproperties.com

Information is believed to be accurate but not guaranteed.

69.3± ACRES PONTOTOC COUNTY, MISSISSIPPI

land id. LINK



Directions from Pontotoc, MS: Travel on S Main Street for 1.7 miles. Turn left onto MS-41 S and the property will be on the right in 5.8 miles.

[LINK TO GOOGLE MAP DIRECTIONS](#)



MICHAEL OSWALT, ALC | PRINCIPAL BROKER
C: 662-719-3967 | michael@smalltownproperties.com



SMALLTOWN
HUNTING PROPERTIES
& REAL ESTATE™



HARRISON EATON | LAND SPECIALIST
C: 662-401-9472 | harrison@smalltownproperties.com