

6.67± ACRES
CHAPARRAL LANE TRACT 8
MENA | POLK COUNTY, AR
\$84,900



SMALLTOWN
HUNTING PROPERTIES
& REAL ESTATE™

OFFICE (479) 588-1034 | WWW.SMALLTOWNPROPERTIES.COM

CHAPARRAL LANE TRACT 8

6.67± ACRES

PROPERTY PROFILE

LOCATION:

- Chaparral Lane
Mena, AR 71953
- Polk County
- 2± Miles to the
Ouachita National Forest
- 4± Miles SW of Mena
- 5± Miles NE of CMA –
Iron Mountain Camp & Cabins
- 10± Miles NW of the
Wolf Pen Gap West Trailhead
- 16± Miles SW of
Irons Fork Lake

COORDINATES:

- 34.54625, -94.27067

TAX INFORMATION:

- TBD

PROPERTY USE:

- Potential Home Site
- Hunting
- Recreational
- Investment

PROPERTY INFORMATION:

- 6.67± Acres
- Pond
- Existing Well
- Electricity on Site
- Mountain View
- Wildlife
- Additional Acreage Available



SMALLTOWN
HUNTING PROPERTIES
& REAL ESTATESM

NICK PATE
LAND SPECIALIST

C: 479-234-3288

O: 479-588-1034

nick@smalltownproperties.com

5607 Highway 71 South - Cove, AR 71937

smalltownproperties.com

Information is believed to be accurate but not guaranteed.

CHAPARRAL LANE TRACT 8 | 6.67± ACRES

WELCOME TO YOUR FUTURE HOME SITE IN MENA, ARKANSAS! This 6.67± acre Polk County property is a real gem for the outdoor enthusiast. As you enter the tract just off Chaparral Lane, you will notice a circle driveway that gives way to a wildlife pond on the north side and a spectacular mountain view on the south end. Electricity is on-site along with an established water well—gather your building plans. Just imagine viewing the local deer herd that regularly frequents this tract from your back porch!

Conveniently located ten miles from Wolf Pen Gap West Trailhead and only two miles from Ouachita National Forest, this tract is ready for you to make it your own! *Additional acreage is available.*

Contact Nick Pate today to schedule a personal tour.



SMALLTOWN
HUNTING PROPERTIES
& REAL ESTATESM

NICK PATE

LAND SPECIALIST

C: 479-234-3288

O: 479-588-1034

nick@smalltownproperties.com

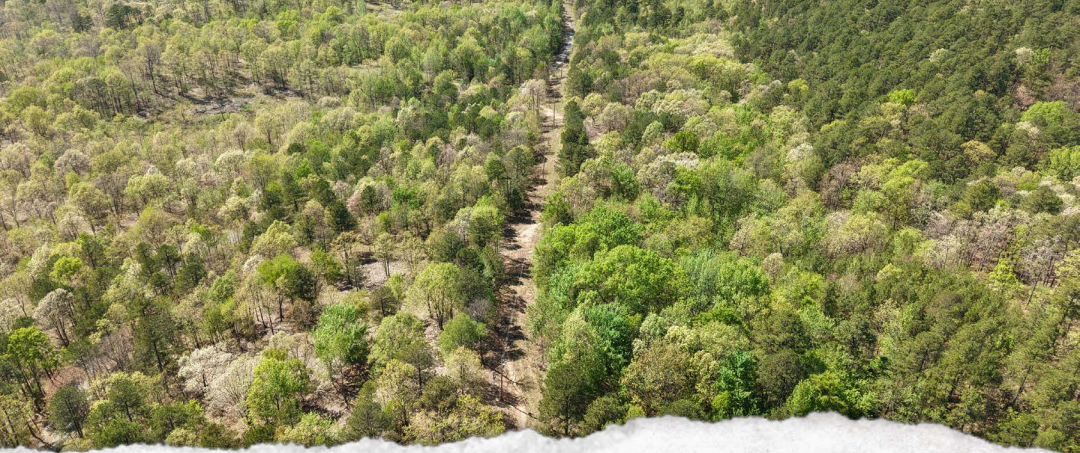
5607 Highway 71 South - Cove, AR 71937

smalltownproperties.com

Information is believed to be accurate but not guaranteed.

CHAPARRAL LANE TRACT 8 6.67 ± ACRES

POLK COUNTY, ARKANSAS



SMALLTOWN
HUNTING PROPERTIES
& REAL ESTATESM

NICK PATE
LAND SPECIALIST

C: 479-234-3288

O: 479-588-1034

nick@smalltownproperties.com

5607 Highway 71 South - Cove, AR 71937

smalltownproperties.com

Information is believed to be accurate but not guaranteed.



SMALLTOWN
HUNTING PROPERTIES
& REAL ESTATESM

NICK PATE
LAND SPECIALIST

C: 479-234-3288

O: 479-588-1034

nick@smalltownproperties.com

5607 Highway 71 South - Cove, AR 71937

smalltownproperties.com

Information is believed to be accurate but not guaranteed.



SMALLTOWN

HUNTING PROPERTIES
& REAL ESTATESM

NICK PATE
LAND SPECIALIST

C: 479-234-3288

O: 479-588-1034

nick@smalltownproperties.com

5607 Highway 71 South - Cove, AR 71937

smalltownproperties.com

Information is believed to be accurate but not guaranteed.

3D MAP



SURVEY MAP



SMALLTOWN HUNTING PROPERTIES & REAL ESTATESM

NICK PATE
LAND SPECIALIST

C: 479-234-3288

O: 479-588-1034

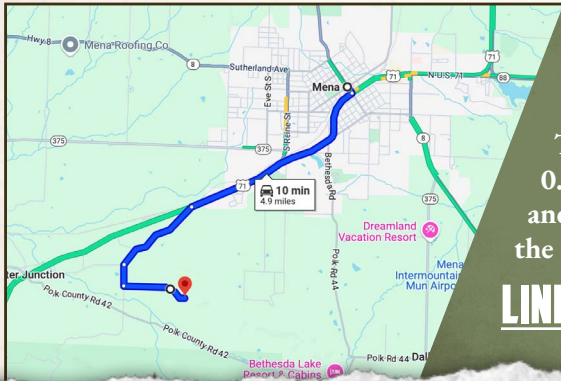
nick@smalltownproperties.com

5607 Highway 71 South - Cove, AR 71937

smalltownproperties.com

Information is believed to be accurate but not guaranteed.

land id. LINK



Directions From Mena, AR: Travel 1.9 miles on Hwy 71 S. Turn left on Polk Road 50 and proceed 1.1 miles. Turn left on Polk Road 412 and continue 0.3 miles. Turn left on Chaparral Lane and in 0.7 miles, the property will be on the left.

[LINK TO GOOGLE MAP DIRECTIONS](#)



SMALLTOWN
HUNTING PROPERTIES
& REAL ESTATESM

NICK PATE
LAND SPECIALIST
C: 479-234-3288
O: 479-588-1034
nick@smalltownproperties.com

5607 Highway 71 South - Cove, AR 71937
smalltownproperties.com

Information is believed to be accurate but not guaranteed.