

**25.32± ACRES**  
**YAZOO COUNTY, MS**  
**\$125,000**



**SMALLTOWN**  
HUNTING PROPERTIES  
& REAL ESTATE<sup>SM</sup>

OFFICE (769) 888-2522 | [WWW.SMALLTOWNPROPERTIES.COM](http://WWW.SMALLTOWNPROPERTIES.COM)



# THE YAZOO 25.32

## PROPERTY PROFILE

### LOCATION:

- Mayer Road  
Bentonla, MS 39040
- Yazoo County
- 12± Miles NE of Bentonla
- 13± Miles SE of Yazoo City
- 36± Miles NW of Madison

### COORDINATES:

- 32.73074, -90.30623

### PROPERTY INFORMATION:

- 25.32± Surveyed Acres
- Hardwood/Pine Mix
- Powerline
- Established Food Plot
- Small Pond
- Utilities:
  - Yazoo Valley EPA
  - Central Yazoo Water Association

### PROPERTY USE:

- Recreation
- Hunting
- Investment
- Potential Home Site

### TAX INFORMATION:

- 2024 - \$847
- Tax Parcel: 1-102-09-006.00



**SMALLTOWN**  
HUNTING PROPERTIES  
& REAL ESTATE<sup>SM</sup>

**CHRIS REED**

LAND SPECIALIST

C: 601-906-0723

O: 769-888-2522

[chris.reed@smalltownproperties.com](mailto:chris.reed@smalltownproperties.com)

4848 Main St. - Flora, MS 39071

[smalltownproperties.com](http://smalltownproperties.com)

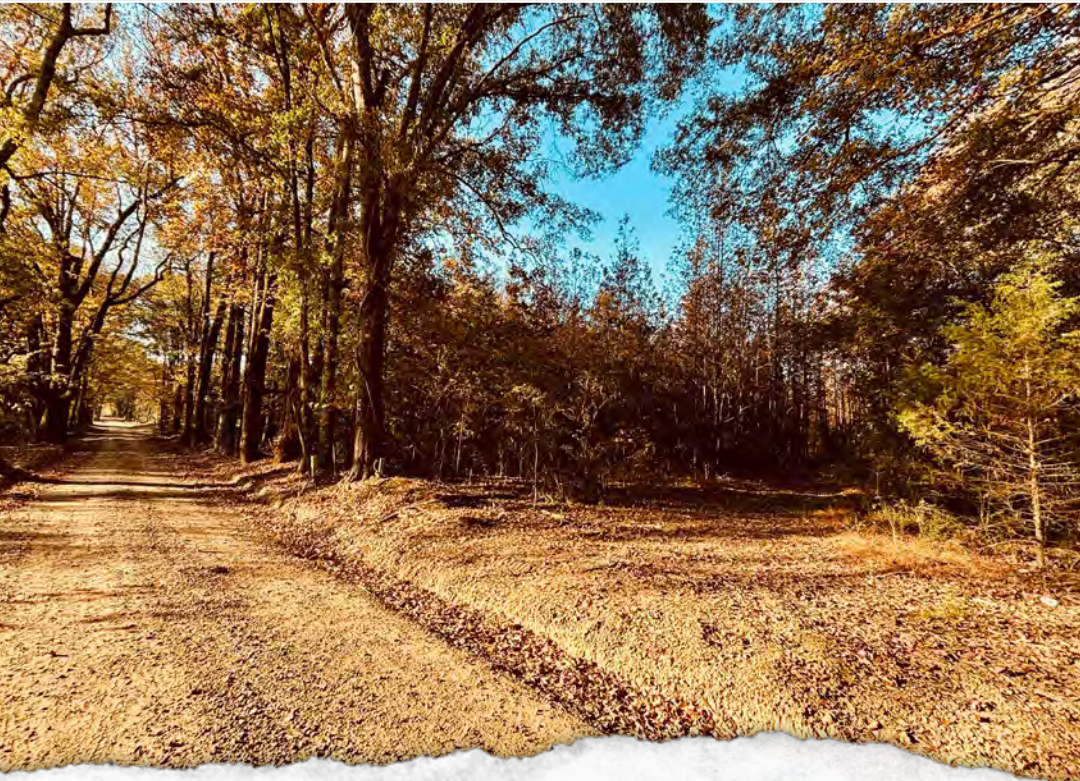
Information is believed to be accurate but not guaranteed.



# WELCOME TO THE YAZOO 25.32

**TAKE ADVANTAGE OF THE OPPORTUNITY TO OWN 25.32± ACRES IN YAZOO COUNTY, MS.** Located north of Bentonina, this tract is situated on Mayer Road, just west of Myrleville Road, and offers a simple, quiet retreat for a country homesite or a small hunting spot close to town.

Entering from the east, you'll find a north-south powerline and an established food plot bordering a stand of hardwoods. The old pasture has naturally grown back over time, but someone with a little vision and willingness to put in some work could reclaim open ground if desired.



**SMALLTOWN**  
HUNTING PROPERTIES  
& REAL ESTATE<sup>SM</sup>

**CHRIS REED**

LAND SPECIALIST

C: 601-906-0723

O: 769-888-2522

[chris.reed@smalltownproperties.com](mailto:chris.reed@smalltownproperties.com)

4848 Main St. - Flora, MS 39071

[smalltownproperties.com](http://smalltownproperties.com)

Information is believed to be accurate but not guaranteed.



# MORE ABOUT THE YAZOO 25.32

The north side of the property features a nice mix of mature hardwoods and pine, along with a tucked-away woods pond that provides a water source for wildlife year-round.

Located just 20 minutes from Yazoo City and convenient to Bentonina, this parcel provides a manageable, affordable option for anyone seeking some acreage in the country. If you're looking for a smaller tract with potential, the Yazoo 25.32 is worth a look.

**Contact Chris Reed today to learn more  
and experience #TheSmallTownWay!**



**SMALLTOWN**  
HUNTING PROPERTIES  
& REAL ESTATE<sup>SM</sup>

**CHRIS REED**

LAND SPECIALIST

C: 601-906-0723

O: 769-888-2522

[chris.reed@smalltownproperties.com](mailto:chris.reed@smalltownproperties.com)

4848 Main St. - Flora, MS 39071

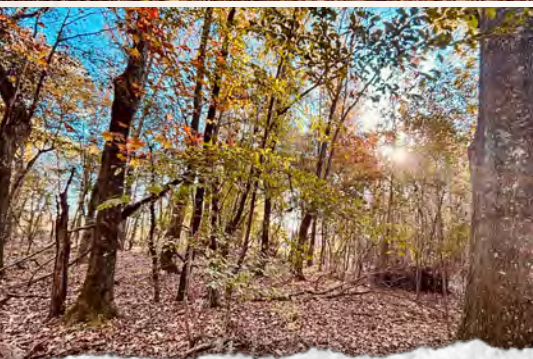
[smalltownproperties.com](http://smalltownproperties.com)

Information is believed to be accurate but not guaranteed.



25.32± ACRES

VAZOO COUNTY, MISSISSIPPI



**SMALLTOWN**  
HUNTING PROPERTIES  
& REAL ESTATE<sup>SM</sup>

**CHRIS REED**

LAND SPECIALIST

C: 601-906-0723

O: 769-888-2522

[chris.reed@smalltownproperties.com](mailto:chris.reed@smalltownproperties.com)

4848 Main St. - Flora, MS 39071

[smalltownproperties.com](http://smalltownproperties.com)

Information is believed to be accurate but not guaranteed.



**25.32± ACRES** **VAZOO COUNTY, MISSISSIPPI**



**SMALLTOWN**  
HUNTING PROPERTIES  
& REAL ESTATE<sup>SM</sup>

**CHRIS REED**

*LAND SPECIALIST*

**C: 601-906-0723**

**O: 769-888-2522**

**[chris.reed@smalltownproperties.com](mailto:chris.reed@smalltownproperties.com)**

**4848 Main St. - Flora, MS 39071**

**[smalltownproperties.com](http://smalltownproperties.com)**

Information is believed to be accurate but not guaranteed.



25.32± ACRES

YAZOO COUNTY, MISSISSIPPI



**SMALLTOWN**  
HUNTING PROPERTIES  
& REAL ESTATE<sup>SM</sup>

**CHRIS REED**

LAND SPECIALIST

C: 601-906-0723

O: 769-888-2522

[chris.reed@smalltownproperties.com](mailto:chris.reed@smalltownproperties.com)

4848 Main St. - Flora, MS 39071

[smalltownproperties.com](http://smalltownproperties.com)

Information is believed to be accurate but not guaranteed.



**25.32± ACRES    YAZOO COUNTY, MISSISSIPPI**



**SMALLTOWN**  
HUNTING PROPERTIES  
& REAL ESTATE<sup>SM</sup>

**CHRIS REED**

LAND SPECIALIST

C: 601-906-0723

O: 769-888-2522

[chris.reed@smalltownproperties.com](mailto:chris.reed@smalltownproperties.com)

4848 Main St. - Flora, MS 39071

[smalltownproperties.com](http://smalltownproperties.com)

Information is believed to be accurate but not guaranteed.



# SOIL MAP



Code	Description	Acres	%	CPI	NCCPI	CAP
LOB2	Loving silt loam, 2 to 5 percent slopes, moderately eroded, central	6.16	24.28%	-	55	3c
CLA	Calloway silt loam, 0 to 2 percent slopes	6.11	24.08%	-	51	2c
CLB	Calloway silt loam, 2 to 5 percent slopes	4.77	18.8%	-	50	3c
LE	Leverett silt loam	3.91	15.41%	-	56	2w
LOC2	Loving silt loam, 5 to 8 percent slopes, moderately eroded, central	2.30	9.07%	-	48	4c
LOD2	Loving silt loam, 8 to 12 percent slopes, moderately eroded, west	1.55	6.11%	-	44	6c
MO	Morganfield silt loam, 0 to 2 percent slopes, occasionally flooded	0.56	2.21%	-	77	2w
Totals		25.37 ac		0 CPI Average	57.03 NCCPI Average	2.86 Cap. Average



**SMALLTOWN**  
HUNTING PROPERTIES  
& REAL ESTATE<sup>SM</sup>

**CHRIS REED**

LAND SPECIALIST

C: 601-906-0723

O: 769-888-2522

[chris.reed@smalltownproperties.com](mailto:chris.reed@smalltownproperties.com)

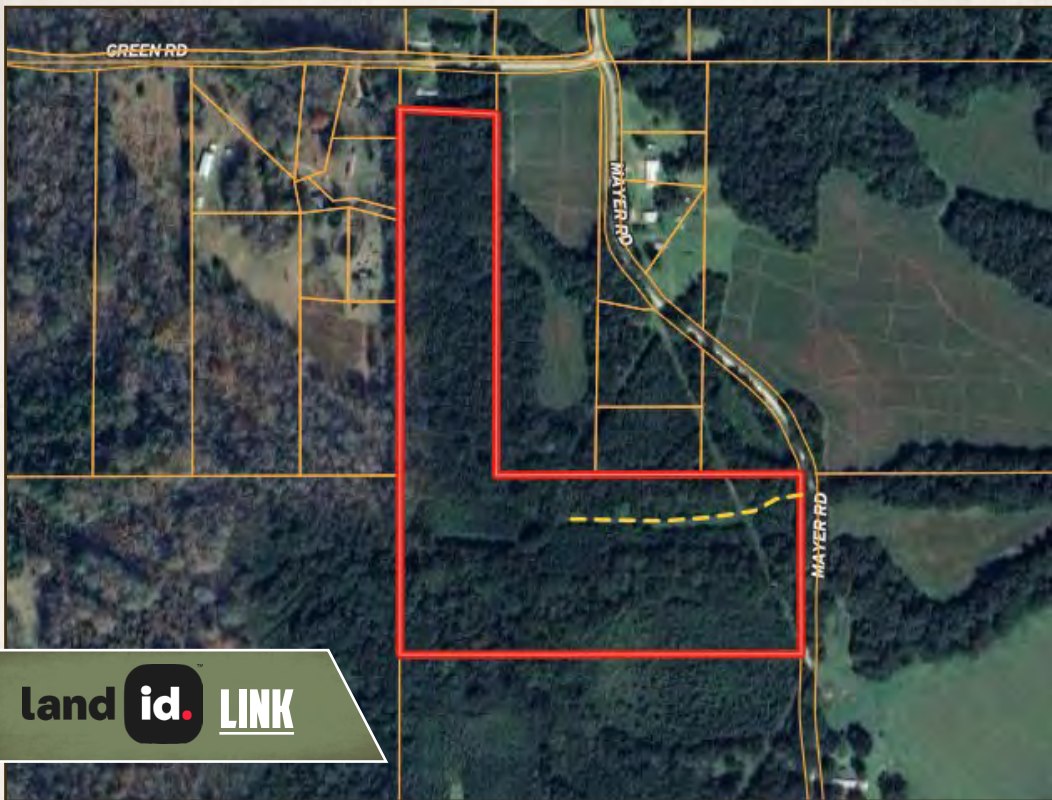
4848 Main St. - Flora, MS 39071

[smalltownproperties.com](http://smalltownproperties.com)

Information is believed to be accurate but not guaranteed.



25.32± ACRES YAZOO COUNTY, MISSISSIPPI



land id. LINK



Directions From the Intersection of Hwy 49 and Hwy 16 in Yazoo City, MS: Travel 2.6 miles south on Hwy 49. Turn left on Myrleville Road and continue 6.7 miles. Turn right on Green Road and proceed 1 mile. The road becomes Mayer Road, continue 0.3 miles to the property on the right.

[LINK TO GOOGLE MAP DIRECTIONS](#)



**SMALLTOWN**  
HUNTING PROPERTIES  
& REAL ESTATE<sup>SM</sup>

**CHRIS REED**

LAND SPECIALIST

C: 601-906-0723

O: 769-888-2522

[chris.reed@smalltownproperties.com](mailto:chris.reed@smalltownproperties.com)

4848 Main St. - Flora, MS 39071

[smalltownproperties.com](http://smalltownproperties.com)

Information is believed to be accurate but not guaranteed.