



SMALLTOWN
HUNTING PROPERTIES
& REAL ESTATESM

252± ACRES
LAMAR COUNTY, AL
\$491,500



OFFICE (769) 760-0005 | WWW.SMALLTOWNPROPERTIES.COM

THE LAMAR 252

PROPERTY PROFILE

LOCATION:

- Savage Street
Millport, AL 35576
- Lamar County
- 46± Miles NW
of Tuscaloosa

COORDINATES:

- 33.570692, -88.069198

PROPERTY USE:

- Deer & Duck Hunting
- Fishing
- Recreation
- Timber Investment

PROPERTY INFORMATION:

- 252± Acres
- Dead End County Road
- Power and Water Nearby
- Trails
- Food Plots
- Flat Terrain
- Pine Plantation
- Creek Frontage
- Flooded Backwater

TAX INFORMATION:

2023 - \$830.05

- Parcel 19-06-14-0-000-018.000-0
- Parcel 19-06-23-1-000-001.000-0
- Parcel 19-06-13-0-000-003.000-0
- Parcel 19-06-24-0-000-003.000-0



DENNIS WEST | MANAGING BROKER
C: 601-248-4396 | dennis@smalltownproperties.com

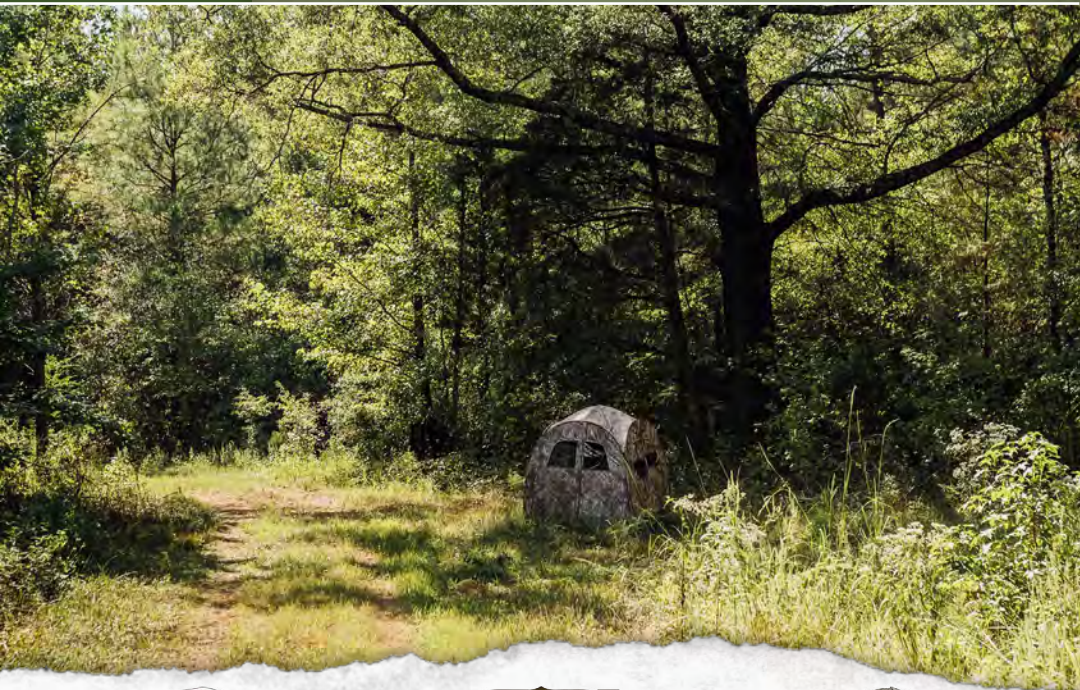


DEREK EAVES | LAND SPECIALIST
C: 662-803-2001 | derek@smalltownproperties.com

WELCOME TO THE LAMAR 252

THE LAMAR 252 OFFERS NATURAL BEAUTY AND A PRIME BLEND OF RECREATIONAL OPPORTUNITIES! Situated off Savage Street near Millport, Alabama in Lamar County, this 252± acre tract features a network of trails for easy access and exploration, along with established food plots to attract and sustain wildlife. Backwater from Luxapallila Creek enhances the appeal, providing opportunities for fishing and waterfowl hunting. The timber make up consists of a mix of young pine plantation and mature hardwood timber, offering excellent habitat for a wide variety of wildlife, including deer, turkey, and ducks. With its diverse landscape, this tract provides year-round recreation, making it ideal for hunting, fishing, and outdoor adventures.

**To schedule a private showing,
call Dennis West or Derek Eaves today!**

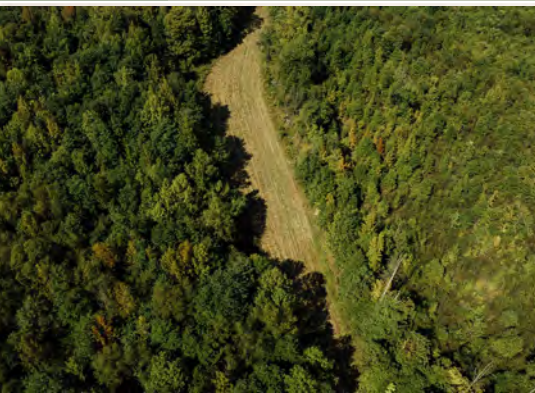


DENNIS WEST | MANAGING BROKER
C: 601-248-4396 | dennis@smalltownproperties.com

DEREK EAVES | LAND SPECIALIST
C: 662-803-2001 | derek@smalltownproperties.com

2121 5th St., Ste 206 - Meridian, MS 39301 | O: 769-760-0005 | smalltownproperties.com Information is believed to be accurate but not guaranteed.

252 ± ACRES **LAMAR COUNTY, ALABAMA**



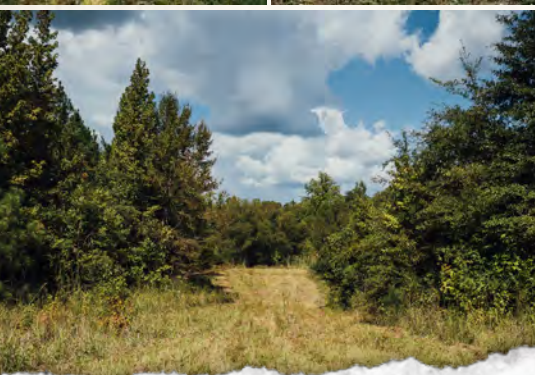
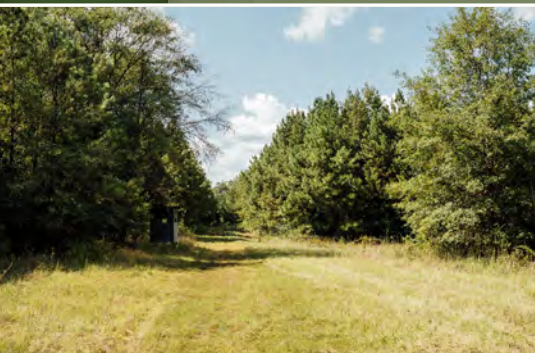
DENNIS WEST | MANAGING BROKER
C: 601-248-4396 | dennis@smalltownproperties.com

DEREK EAVES | LAND SPECIALIST
C: 662-803-2001 | derek@smalltownproperties.com

2121 5th St., Ste 206 - Meridian, MS 39301 | O: 769-760-0005 | smalltownproperties.com Information is believed to be accurate but not guaranteed.

252 ± ACRES

LAMAR COUNTY, ALABAMA



DENNIS WEST | MANAGING BROKER
C: 601-248-4396 | dennis@smalltownproperties.com

DEREK EAVES | LAND SPECIALIST
C: 662-803-2001 | derek@smalltownproperties.com

2121 5th St., Ste 206 - Meridian, MS 39301 | O: 769-760-0005 | smalltownproperties.com Information is believed to be accurate but not guaranteed.

252 ± ACRES

LAMAR COUNTY, ALABAMA



DENNIS WEST | MANAGING BROKER
C: 601-248-4396 | dennis@smalltownproperties.com

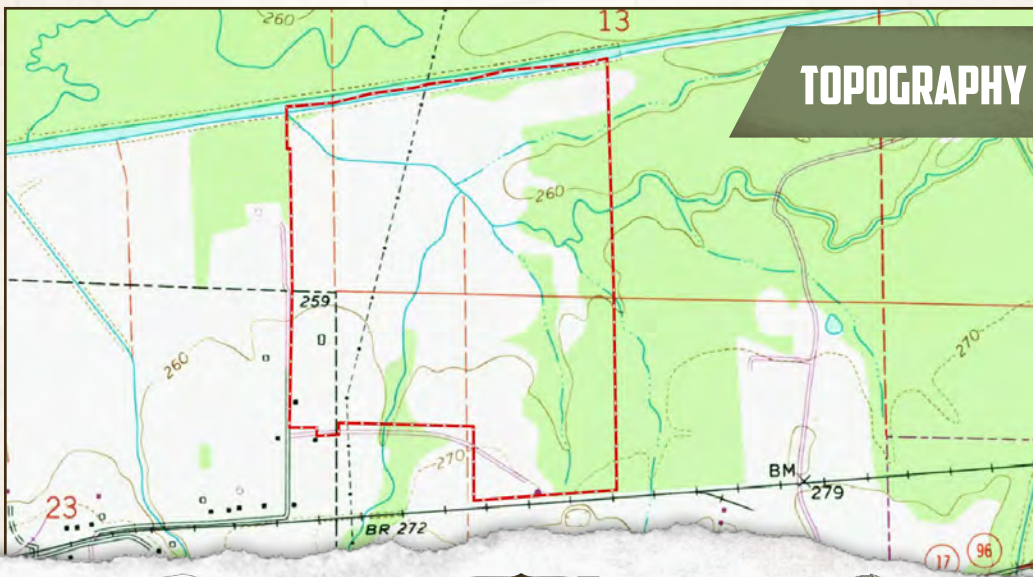
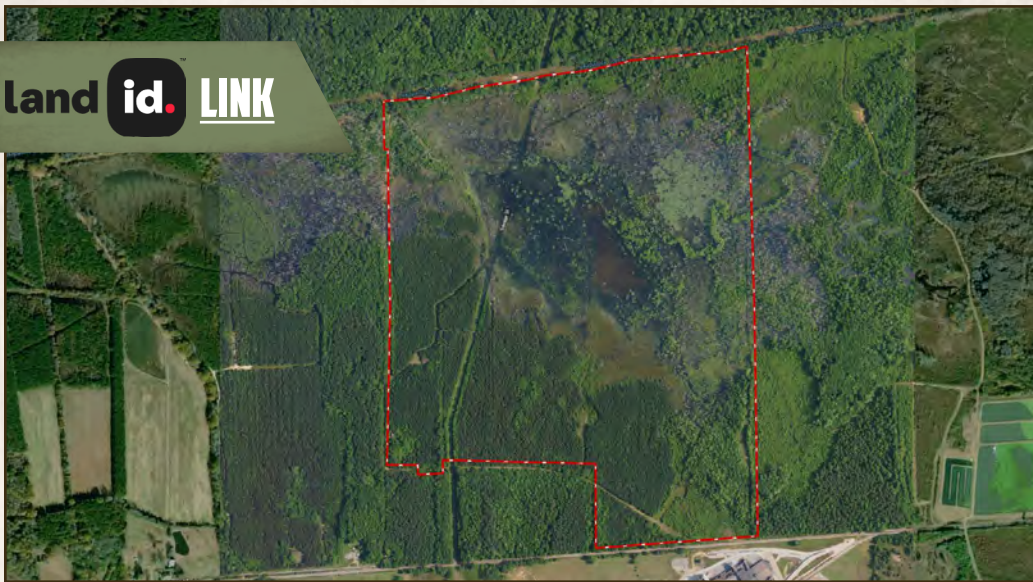
DEREK EAVES | LAND SPECIALIST
C: 662-803-2001 | derek@smalltownproperties.com

2121 5th St., Ste 206 - Meridian, MS 39301 | O: 769-760-0005 | smalltownproperties.com Information is believed to be accurate but not guaranteed.

252 ± ACRES

LAMAR COUNTY, ALABAMA

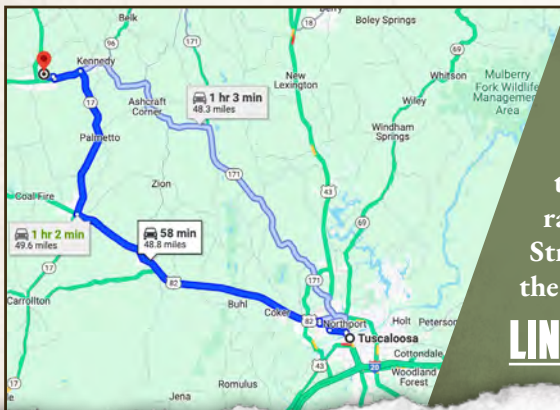
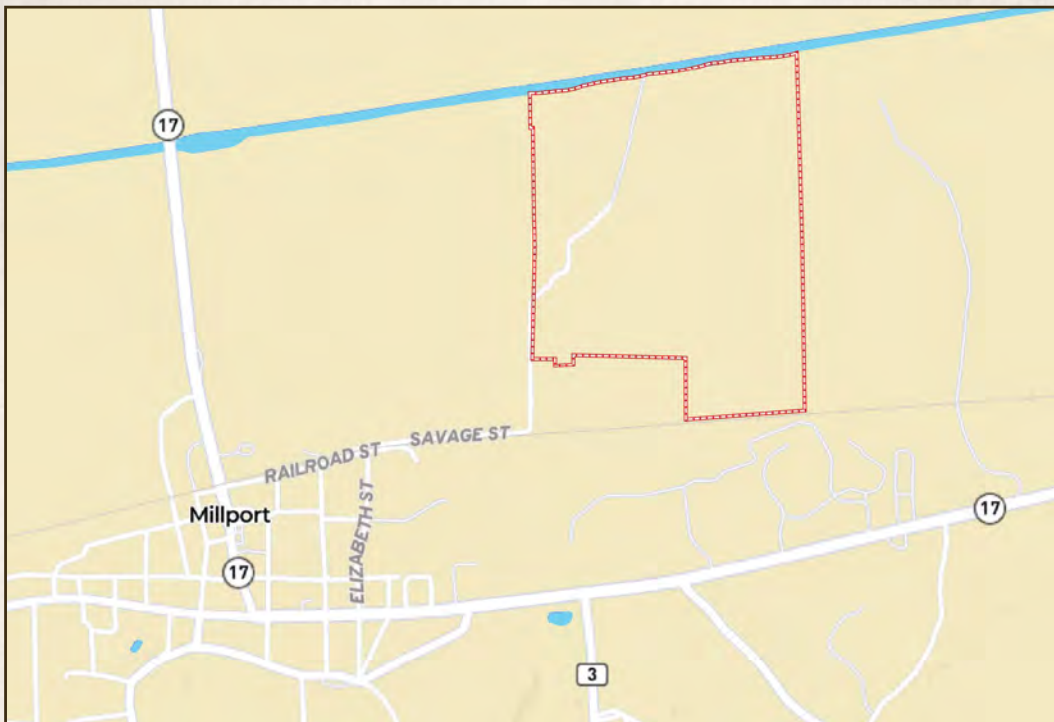
land id. LINK



DENNIS WEST | MANAGING BROKER
C: 601-248-4396 | dennis@smalltownproperties.com



DEREK EAVES | LAND SPECIALIST
C: 662-803-2001 | derek@smalltownproperties.com

252 ± ACRES**LAMAR COUNTY, ALABAMA**

Directions From the Intersection of Hwy 96 and Hwy 17 in Millport, AL: Travel north on Hwy 17 to Railroad Street. Turn right and travel to Elisabeth Street, turn left, cross the railroad then turn right onto Savage Street. The property will be at the end of the road at the gate.

[LINK TO GOOGLE MAP DIRECTIONS](#)



DENNIS WEST | MANAGING BROKER
C: 601-248-4396 | dennis@smalltownproperties.com



DEREK EAVES | LAND SPECIALIST
C: 662-803-2001 | derek@smalltownproperties.com