



SMALLTOWN

HUNTING PROPERTIES
& REAL ESTATESM

110± ACRES
SCOTT COUNTY, MS
\$198,000

OFFICE (769) 760-0005 | WWW.SMALLTOWNPROPERTIES.COM

THE SCOTT 110

PROPERTY PROFILE

LOCATION:

- Pettey/Old Hillsboro Road Forest, MS 39074
- Scott County
- 17± Miles N of Forest

COORDINATES:

- 32.5246712, -89.4720854

PROPERTY USE:

- Hunting
- Recreation
- Potential Build Sites

PROPERTY INFORMATION:

- 110± Acres
- County Road Frontage
- Power and Water Available Nearby
- Established Trail System
- Rolling and Flat Terrain
- Fresh Cutover
- Tallabogue Creek Frontage
- Deer and Turkey
- Natural Duck Lake

TAX INFORMATION:

- Parcel Part of 1-185-22-000-00-00200: \$448.00 Estimated



SMALLTOWN
HUNTING PROPERTIES
& REAL ESTATESM

DENNIS WEST

EAST MISSISSIPPI MANAGING BROKER

ALABAMA QUALIFYING BROKER

LOUISIANA ASSOCIATE BROKER

C: 601-248-4396 | O: 769-760-0005

dennis@smalltownproperties.com

2121 5th St., Ste 206 - Meridian, MS 39301

smalltownproperties.com

WELCOME TO THE SCOTT 110

DISCOVER THE ULTIMATE RECREATIONAL PROPERTY WITH THIS EXCEPTIONAL 110± ACRE PROPERTY IN SCOTT COUNTY, MISSISSIPPI. Located along Pettey/Old Hillsboro Road, this tract is recent cutover, hardwood timber and boasts an excellent wildlife habitat. The property features towering oak trees, a network of trails for easy access to every corner, a natural duck lake, perfect for wood duck hunting, and frontage on Tallabogue Creek, which adds natural beauty, fishing opportunities and a reliable water source for wildlife. With utilities available nearby, this property offers potential building sites, making it a versatile option for a hunting retreat or a serene getaway. Whether you're seeking a recreational haven for hunting, fishing or a weekend get a way, this property has everything you need.

**Contact Dennis West today to explore
this incredible piece of Mississippi land!**



SMALLTOWN
HUNTING PROPERTIES
& REAL ESTATESM

DENNIS WEST

EAST MISSISSIPPI MANAGING BROKER

ALABAMA QUALIFYING BROKER

LOUISIANA ASSOCIATE BROKER

C: 601-248-4396 | O: 769-760-0005

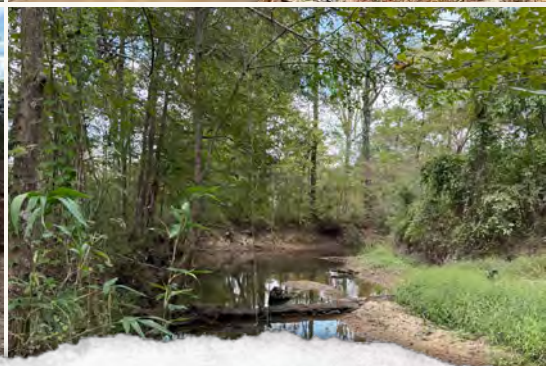
dennis@smalltownproperties.com

2121 5th St., Ste 206 - Meridian, MS 39301

smalltownproperties.com

110± ACRES

SCOTT COUNTY, MISSISSIPPI



SMALLTOWN
HUNTING PROPERTIES
& REAL ESTATESM

DENNIS WEST

EAST MISSISSIPPI MANAGING BROKER

ALABAMA QUALIFYING BROKER

LOUISIANA ASSOCIATE BROKER

C: 601-248-4396 | O: 769-760-0005

dennis@smalltownproperties.com

2121 5th St., Ste 206 - Meridian, MS 39301

smalltownproperties.com

Information is believed to be accurate but not guaranteed.

110± ACRES

SCOTT COUNTY, MISSISSIPPI



SMALLTOWN
HUNTING PROPERTIES
& REAL ESTATESM

DENNIS WEST

EAST MISSISSIPPI MANAGING BROKER

ALABAMA QUALIFYING BROKER

LOUISIANA ASSOCIATE BROKER

C: 601-248-4396 | O: 769-760-0005

dennis@smalltownproperties.com

2121 5th St., Ste 206 - Meridian, MS 39301

smalltownproperties.com

Information is believed to be accurate but not guaranteed.

110± ACRES

SCOTT COUNTY, MISSISSIPPI



SMALLTOWN
HUNTING PROPERTIES
& REAL ESTATESM

DENNIS WEST

EAST MISSISSIPPI MANAGING BROKER

ALABAMA QUALIFYING BROKER

LOUISIANA ASSOCIATE BROKER

C: 601-248-4396 | O: 769-760-0005

dennis@smalltownproperties.com

2121 5th St., Ste 206 - Meridian, MS 39301

smalltownproperties.com

Information is believed to be accurate but not guaranteed.

110± ACRES

SCOTT COUNTY, MISSISSIPPI



SMALLTOWN
HUNTING PROPERTIES
& REAL ESTATESM

DENNIS WEST

EAST MISSISSIPPI MANAGING BROKER

ALABAMA QUALIFYING BROKER

LOUISIANA ASSOCIATE BROKER

C: 601-248-4396 | O: 769-760-0005

dennis@smalltownproperties.com

2121 5th St., Ste 206 - Meridian, MS 39301

smalltownproperties.com

Information is believed to be accurate but not guaranteed.

110± ACRES

SCOTT COUNTY, MISSISSIPPI



SMALLTOWN
HUNTING PROPERTIES
& REAL ESTATESM

DENNIS WEST

EAST MISSISSIPPI MANAGING BROKER

ALABAMA QUALIFYING BROKER

LOUISIANA ASSOCIATE BROKER

C: 601-248-4396 | O: 769-760-0005

dennis@smalltownproperties.com

2121 5th St., Ste 206 - Meridian, MS 39301

smalltownproperties.com

Information is believed to be accurate but not guaranteed.

110± ACRES

SCOTT COUNTY, MISSISSIPPI



SMALLTOWN
HUNTING PROPERTIES
& REAL ESTATESM

DENNIS WEST

EAST MISSISSIPPI MANAGING BROKER

ALABAMA QUALIFYING BROKER

LOUISIANA ASSOCIATE BROKER

C: 601-248-4396 | O: 769-760-0005

dennis@smalltownproperties.com

2121 5th St., Ste 206 - Meridian, MS 39301

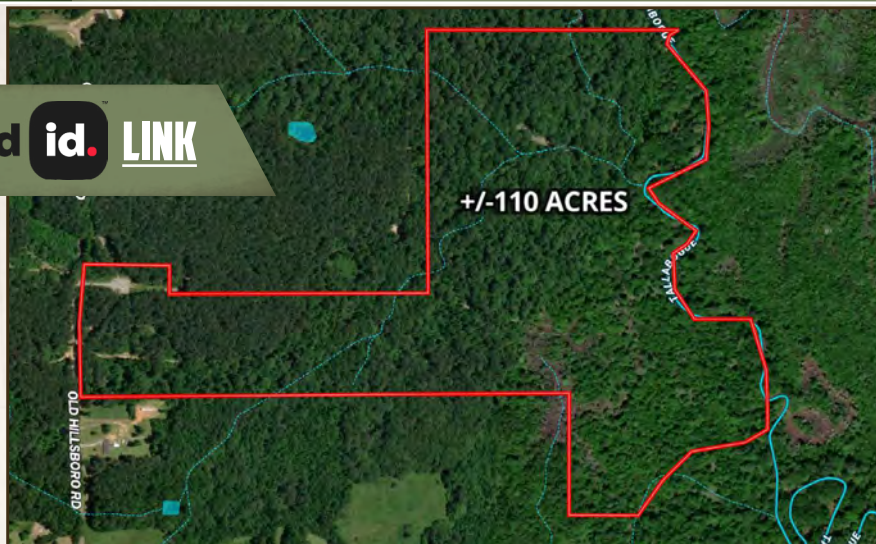
smalltownproperties.com

Information is believed to be accurate but not guaranteed.

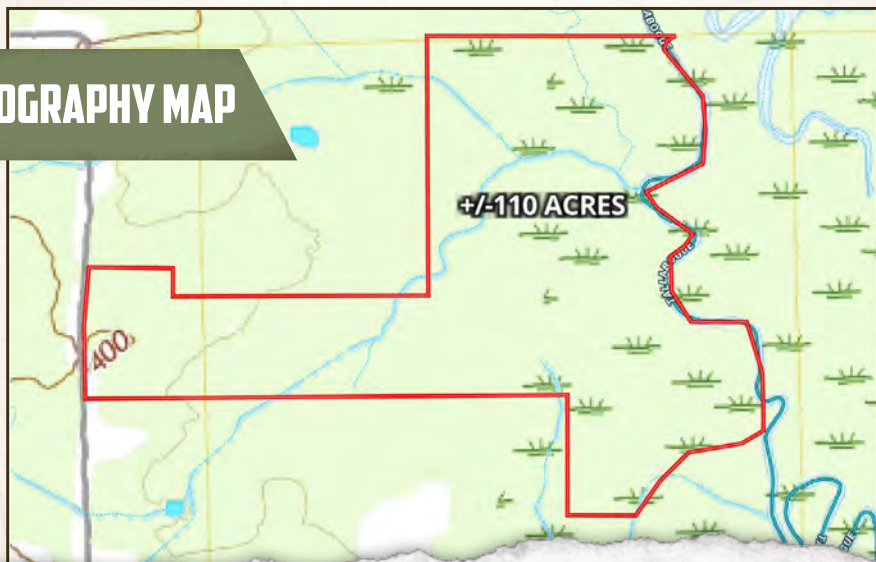
110± ACRES

SCOTT COUNTY, MISSISSIPPI

land **id.** LINK



TOPOGRAPHY MAP



SMALLTOWN
HUNTING PROPERTIES
& REAL ESTATESM

DENNIS WEST

EAST MISSISSIPPI MANAGING BROKER

ALABAMA QUALIFYING BROKER

LOUISIANA ASSOCIATE BROKER

C: 601-248-4396 | O: 769-760-0005

dennis@smalltownproperties.com

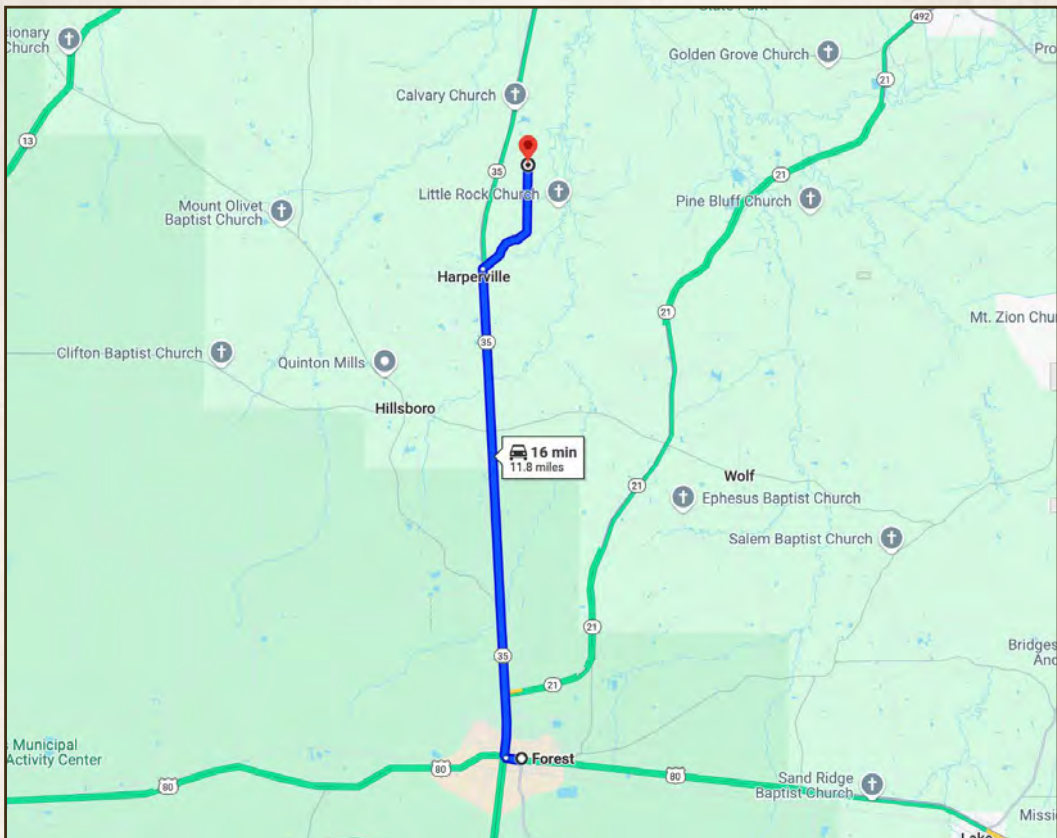
2121 5th St., Ste 206 - Meridian, MS 39301

smalltownproperties.com

Information is believed to be accurate but not guaranteed.

110± ACRES

SCOTT COUNTY, MISSISSIPPI



Directions From Forest, MS: Travel north to Pettey/Old Hillsboro Road and turn right. Travel 2.5 miles to the property on your right.

[LINK TO GOOGLE MAP DIRECTIONS](#)



SMALLTOWN
HUNTING PROPERTIES
& REAL ESTATESM

DENNIS WEST

EAST MISSISSIPPI MANAGING BROKER

ALABAMA QUALIFYING BROKER

LOUISIANA ASSOCIATE BROKER

C: 601-248-4396 | O: 769-760-0005

dennis@smalltownproperties.com

2121 5th St., Ste 206 - Meridian, MS 39301

smalltownproperties.com

Information is believed to be accurate but not guaranteed.