



**SMALLTOWN**  
HUNTING PROPERTIES  
& REAL ESTATE<sup>SM</sup>

**738 FOREST PARK CIRCLE**  
**PHILADELPHIA | NESHOBIA COUNTY, MS**  
**\$575,000**



OFFICE (769) 760-0005  
[WWW.SMALLTOWNPROPERTIES.COM](http://WWW.SMALLTOWNPROPERTIES.COM)

OFFICE (601) 568-1099  
[WWW.STINSON-REALTY.COM](http://WWW.STINSON-REALTY.COM)

# 738 FOREST PARK CIRCLE

## PROPERTY PROFILE

### LOCATION:

- 738 Forest Park Circle  
Philadelphia, MS 39350
- Neshoba County, MS
- 0.8± Miles N of Downtown  
Philadelphia
- 27± Miles N of Decatur
- 39± Miles NW of Meridian

### COORDINATES:

- 32.78085, -89.10975

### PROPERTY USE:

- Residential

### TAX INFORMATION:

- Parcel 06330B-00A-009.000
- \$3,523.62 for 2024

### PROPERTY INFORMATION:

- 0.89± Acres
- 4,300± SqFt Home
  - 4 Bedrooms/3.5 Baths
  - Large Primary Suite & Bath
  - Office Room
  - Hardwood Floors & Ceramic Tile
  - His/Her Separate Vanity
  - His/Her Separate Closet Space
  - Open Kitchen Concept
  - Fireplace
- Outdoor Cooking Area
- Swimming Pool with  
Concrete Privacy Wall
- Large Pool House with  
Additional Living Space
- 2-Car Garage
- Professionally Landscaped Yard
- Palm Trees



**SMALLTOWN**  
HUNTING PROPERTIES  
& REAL ESTATE<sup>SM</sup>



**DEREK EAVES** | LAND SPECIALIST  
C: 662-803-2001 | derek@smalltownproperties.com

**WALTON STINSON** | BROKER, STINSON REALTY  
C: 601-562-5794 | walton5794@gmail.com

2121 5th St., Suite 206 - Meridian, MS 39301 Information is believed to be accurate but not guaranteed.  
O: 769-760-0005 | smalltownproperties.com

10110 MS 486 - Philadelphia, MS 39350  
O: 601-568-1099 | stinson-realty.com



# WELCOME TO 738 FOREST PARK CIRCLE

**WELCOME TO 738 FOREST PARK CIRCLE IN PHILADELPHIA, MISSISSIPPI!** Located in Neshoba County, this impressive 4,300± square foot residential home sits on 0.89± acres and offers a rare combination of spacious interior living and resort-style outdoor amenities. Conveniently positioned just 0.8 miles from downtown Philadelphia, 27± miles north of Decatur, and 39± miles northwest of Meridian, the location is ideal for those seeking both privacy and accessibility.

The home features four bedrooms and three and a half baths with a well-designed layout that provides ample room for family living and entertaining. A large primary suite serves as a private retreat with an expansive bathroom that includes his and her separate vanities and a dedicated closet space. An additional office room adds flexibility for working from home, studying, or creating a quiet space away from the main living areas.



**SMALLTOWN**  
HUNTING PROPERTIES  
& REAL ESTATE<sup>SM</sup>



**DEREK EAVES** | LAND SPECIALIST  
C: 662-803-2001 | [derek@smalltownproperties.com](mailto:derek@smalltownproperties.com)

**WALTON STINSON** | BROKER, STINSON REALTY  
C: 601-562-5794 | [walton5794@gmail.com](mailto:walton5794@gmail.com)

2121 5th St., Suite 206 - Meridian, MS 39301 Information is believed to be accurate but not guaranteed.  
O: 769-760-0005 | [smalltownproperties.com](http://smalltownproperties.com)

10110 MS 486 - Philadelphia, MS 39350  
O: 601-568-1099 | [stinson-realty.com](http://stinson-realty.com)



# MORE ABOUT 738 FOREST PARK CIRCLE

The open kitchen concept flows seamlessly into the main living spaces and creates an inviting environment for gatherings, while a fireplace adds warmth and character to the home's interior. Hardwood floors and ceramic tile extend throughout, offering timeless style and durable finishes.

Outdoor living is a standout feature, with a professionally landscaped yard accented by palm trees, a dedicated outdoor cooking area, and a swimming pool enhanced by a concrete privacy wall for added seclusion. A large pool house with additional living space provides endless possibilities for guest accommodations, recreation, or entertaining. Completing the property is an attached two-car garage, making it an exceptional opportunity to own a high-quality home with premium amenities in a desirable East Mississippi location.

**To schedule a private showing, contact Derek Eaves or  
Walton Stinson today and experience #TheSmallTownWay!**



**SMALLTOWN**  
HUNTING PROPERTIES  
& REAL ESTATE<sup>SM</sup>



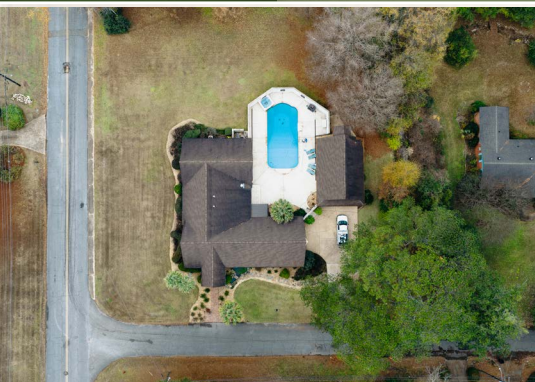
**DEREK EAVES** | LAND SPECIALIST  
C: 662-803-2001 | [derek@smalltownproperties.com](mailto:derek@smalltownproperties.com)

**WALTON STINSON** | BROKER, STINSON REALTY  
C: 601-562-5794 | [walton5794@gmail.com](mailto:walton5794@gmail.com)

2121 5th St., Suite 206 - Meridian, MS 39301 Information is believed to be accurate but not guaranteed.  
O: 769-760-0005 | [smalltownproperties.com](http://smalltownproperties.com)

10110 MS 486 - Philadelphia, MS 39350  
O: 601-568-1099 | [stinson-realty.com](http://stinson-realty.com)





**SMALLTOWN**  
HUNTING PROPERTIES  
& REAL ESTATE<sup>SM</sup>



**DEREK EAVES** | LAND SPECIALIST  
C: 662-803-2001 | [derek@smalltownproperties.com](mailto:derek@smalltownproperties.com)

**WALTON STINSON** | BROKER, STINSON REALTY  
C: 601-562-5794 | [walton5794@gmail.com](mailto:walton5794@gmail.com)

2121 5th St., Suite 206 - Meridian, MS 39301  
O: 760-760-0005 | [smalltownproperties.com](http://smalltownproperties.com)

10110 MS 486 - Philadelphia, MS 39350  
O: 601-568-1099 | [stinson-realty.com](http://stinson-realty.com)





**SMALLTOWN**  
HUNTING PROPERTIES  
& REAL ESTATE<sup>SM</sup>



**DEREK EAVES** | LAND SPECIALIST  
C: 662-803-2001 | [derek@smalltownproperties.com](mailto:derek@smalltownproperties.com)

2121 5th St., Suite 206 - Meridian, MS 39301  
O: 769-760-0005 | [smalltownproperties.com](http://smalltownproperties.com)

**WALTON STINSON** | BROKER, STINSON REALTY  
C: 601-562-5794 | [walton5794@gmail.com](mailto:walton5794@gmail.com)

10110 MS 486 - Philadelphia, MS 39350  
O: 601-568-1099 | [stinson-realty.com](http://stinson-realty.com)



**SMALLTOWN**  
HUNTING PROPERTIES  
& REAL ESTATE<sup>SM</sup>



**DEREK EAVES** | LAND SPECIALIST  
C: 662-803-2001 | [derek@smalltownproperties.com](mailto:derek@smalltownproperties.com)

2121 5th St., Suite 206 - Meridian, MS 39301 *Information is believed to be accurate but not guaranteed.*  
O: 768-760-0005 | [smalltownproperties.com](http://smalltownproperties.com)

**WALTON STINSON** | BROKER, STINSON REALTY  
C: 601-562-5794 | [walton5794@gmail.com](mailto:walton5794@gmail.com)

10110 MS 486 - Philadelphia, MS 39350  
O: 601-568-1099 | [stinson-realty.com](http://stinson-realty.com)





**SMALLTOWN**  
HUNTING PROPERTIES  
& REAL ESTATE<sup>SM</sup>



**DEREK EAVES** | LAND SPECIALIST  
C: 662-803-2001 | [derek@smalltownproperties.com](mailto:derek@smalltownproperties.com)

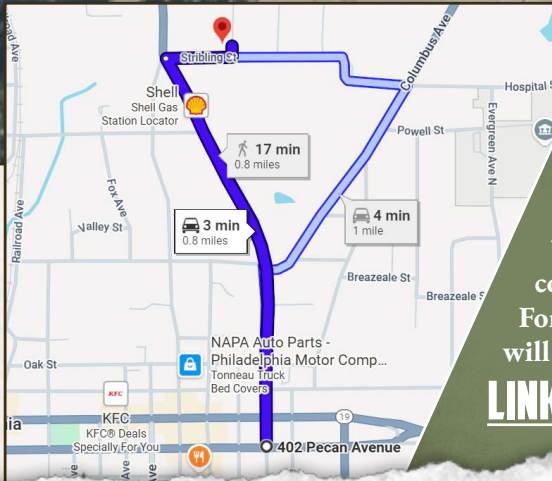
**WALTON STINSON** | BROKER, STINSON REALTY  
C: 601-562-5794 | [walton5794@gmail.com](mailto:walton5794@gmail.com)

2121 5th St., Suite 206 - Meridian, MS 39301 Information is believed to be accurate but not guaranteed.  
O: 769-760-0005 | [smalltownproperties.com](http://smalltownproperties.com)

10110 MS 486 - Philadelphia, MS 39350  
O: 601-568-1099 | [stinson-realty.com](http://stinson-realty.com)



land id. LINK



Directions from Philadelphia, MS:  
Travel on Pecan Avenue for 0.7 miles.  
Turn right onto Stribling Street and  
continue for 0.1 mile. Turn left onto  
Forest Park Circle and the destination  
will be immediately on the left.

[LINK TO GOOGLE MAP DIRECTIONS](#)



**SMALLTOWN**  
HUNTING PROPERTIES  
& REAL ESTATE<sup>SM</sup>



**DEREK EAVES** | LAND SPECIALIST  
C: 662-803-2001 | derek@smalltownproperties.com

**WALTON STINSON** | BROKER, STINSON REALTY  
C: 601-562-5794 | walton5794@gmail.com

2121 5th St., Suite 206 - Meridian, MS 39301  
O: 769-760-0005 | smalltownproperties.com

10110 MS 486 - Philadelphia, MS 39350  
O: 601-568-1099 | stinson-realty.com