

**398± ACRES**  
**NOXUBEE COUNTY, MS**  
**\$1,353,200**



**SMALLTOWN**  
HUNTING PROPERTIES  
& REAL ESTATE<sup>SM</sup>

OFFICE (662) 238-4077 | [WWW.SMALLTOWNPROPERTIES.COM](http://WWW.SMALLTOWNPROPERTIES.COM)



# THE NOXUBEE 398

## PROPERTY PROFILE

### LOCATION:

- Carr Road Macon, MS 39341
- Noxubee County
- 11.5± Miles W of Macon
- 21.1± Miles E of Louisville
- 37.2± Miles NE of Philadelphia
- 46.6± Miles S of Starkville

### COORDINATES:

- 33.07453, -88.72123

### PROPERTY USE:

- Timber Investment
- Recreational
- Hunting & Fishing

### PROPERTY INFORMATION:

- 398± Total Acres
- 2± Acre Pond
- Gravel Road Frontage
- Hardwood Timber
- Hashaugua Creek Frontage
- Various-Age Pine Plantation
- Intensely-Managed Timber
- Excellent Deer/Turkey History
- Hardwood Creek Bottom
- Multiple Food Plots

### TAX INFORMATION:

- 2024 - \$1,714.01



**MICHAEL OSWALT, ALC** | PRINCIPAL BROKER  
C: 662-719-3967 | michael@smalltownproperties.com

**DECK FAIR** | ASSOCIATE BROKER  
C: 662-801-4809 | deck@smalltownproperties.com

Information is believed to be accurate but not guaranteed.

4848 Main St. - Flora, MS 39071 | O: 769-888-2522 | smalltownproperties.com

# WELCOME TO THE NOXUBEE 398

**WELCOME TO A PREMIER RECREATIONAL AND INVESTMENT OPPORTUNITY IN NOXUBEE COUNTY, MS!** This 398± acre tract, located on Carr Road, has been under strict timber management (Canale Forest Management Company) for more than 30 years, creating an outstanding balance of income potential and outdoor enjoyment. The property features well-managed plantation pine stands of varying ages, intermixed with hardwood creek bottoms that enhance both wildlife habitat and diversity.

The gently rolling terrain sets the stage for exceptional deer and turkey hunting, while Hashaugua Creek winds its way across the tract, providing both beauty and a year-round water source for the local wildlife. You will find multiple established food plots and a great internal trail system to help navigate throughout.



**MICHAEL OSWALT, ALC** | PRINCIPAL BROKER  
C: 662-719-3967 | [michael@smalltownproperties.com](mailto:michael@smalltownproperties.com)

**DECK FAIR** | ASSOCIATE BROKER  
C: 662-801-4809 | [deck@smalltownproperties.com](mailto:deck@smalltownproperties.com)

Information is believed to be accurate but not guaranteed.

4848 Main St. - Flora, MS 39071 | O: 769-888-2522 | [smalltownproperties.com](http://smalltownproperties.com)



# MORE ABOUT THE NOXUBEE 398

A 2± acre pond, near the entrance, adds fishing opportunities and creates a perfect spot for relaxing weekends with family and friends. Several locations across the property would make ideal sites for a home, lodge, or hunting camp.

Whether you're seeking a recreational getaway, a long-term timber investment, or both, this tract delivers. Conveniently located less than 12 miles west of Macon and barely over 21 miles east of Louisville, you'll find yourself in the heart of Mississippi's wildlife-rich landscape with easy access to town.

**Contact Deck Fair or Michael Oswalt today to schedule  
a private showing of this outstanding property.**



**MICHAEL OSWALT, ALC** | PRINCIPAL BROKER  
C: 662-719-3967 | [michael@smalltownproperties.com](mailto:michael@smalltownproperties.com)

**DECK FAIR** | ASSOCIATE BROKER  
C: 662-801-4809 | [deck@smalltownproperties.com](mailto:deck@smalltownproperties.com)

Information is believed to be accurate but not guaranteed.

4848 Main St. - Flora, MS 39071 | O: 769-888-2522 | [smalltownproperties.com](http://smalltownproperties.com)



**398 ± ACRES**

**NOXUBEE COUNTY, MISSISSIPPI**



**MICHAEL OSWALT, ALC** | PRINCIPAL BROKER  
C: 662-719-3967 | [michael@smalltownproperties.com](mailto:michael@smalltownproperties.com)

**DECK FAIR** | ASSOCIATE BROKER  
C: 662-801-4809 | [deck@smalltownproperties.com](mailto:deck@smalltownproperties.com)

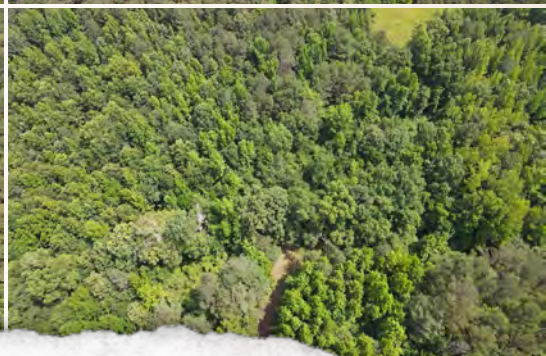
Information is believed to be accurate but not guaranteed.

4848 Main St. - Flora, MS 39071 | O: 769-888-2522 | [smalltownproperties.com](http://smalltownproperties.com)



**398 ± ACRES**

**NOXUBEE COUNTY, MISSISSIPPI**



**MICHAEL OSWALT, ALC** | PRINCIPAL BROKER  
C: 662-719-3967 | [michael@smalltownproperties.com](mailto:michael@smalltownproperties.com)

**DECK FAIR** | ASSOCIATE BROKER  
C: 662-801-4809 | [deck@smalltownproperties.com](mailto:deck@smalltownproperties.com)

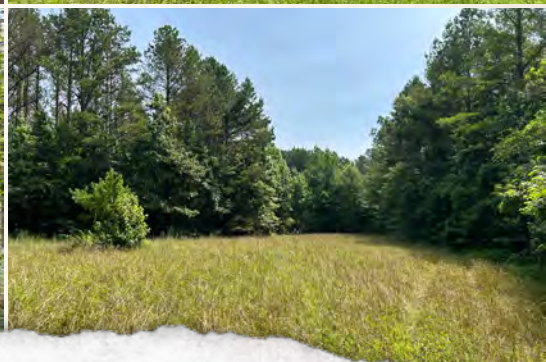
Information is believed to be accurate but not guaranteed.

4848 Main St. - Flora, MS 39071 | O: 769-888-2522 | [smalltownproperties.com](http://smalltownproperties.com)



**398 ± ACRES**

**NOXUBEE COUNTY, MISSISSIPPI**



**MICHAEL OSWALT, ALC** | PRINCIPAL BROKER  
C: 662-719-3967 | [michael@smalltownproperties.com](mailto:michael@smalltownproperties.com)

**DECK FAIR** | ASSOCIATE BROKER  
C: 662-801-4809 | [deck@smalltownproperties.com](mailto:deck@smalltownproperties.com)

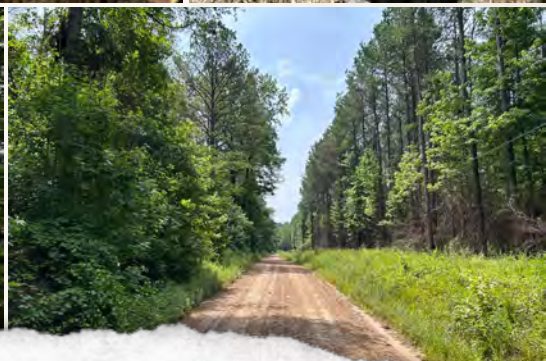
Information is believed to be accurate but not guaranteed.

4848 Main St. - Flora, MS 39071 | O: 769-888-2522 | [smalltownproperties.com](http://smalltownproperties.com)



**398 ± ACRES**

**NOXUBEE COUNTY, MISSISSIPPI**



**MICHAEL OSWALT, ALC** | PRINCIPAL BROKER  
C: 662-719-3967 | [michael@smalltownproperties.com](mailto:michael@smalltownproperties.com)

Information is believed to be accurate but not guaranteed.

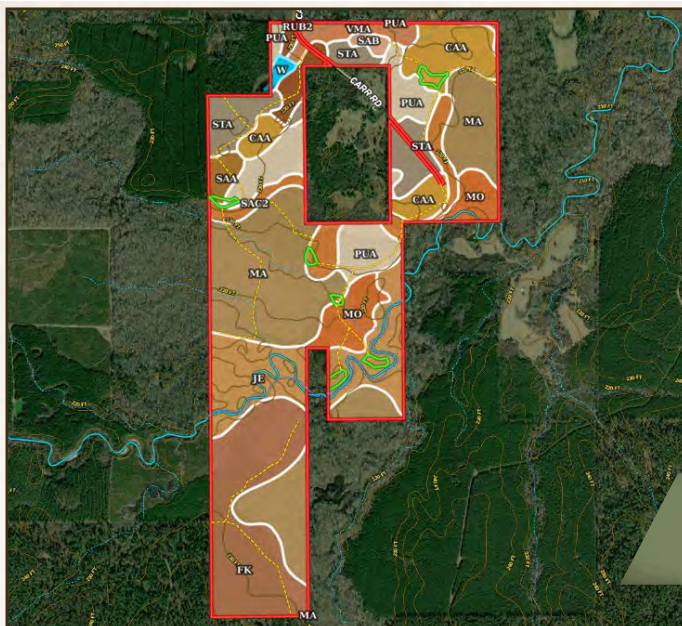
**DECK FAIR** | ASSOCIATE BROKER  
C: 662-801-4809 | [deck@smalltownproperties.com](mailto:deck@smalltownproperties.com)

4848 Main St. - Flora, MS 39071 | O: 769-888-2522 | [smalltownproperties.com](http://smalltownproperties.com)



398 ± ACRES

NOXUBEE COUNTY, MISSISSIPPI



## SOIL MAP

SOIL CODE	SOIL DESCRIPTION	ACRES	%	CPI	NCPI	CAP
MA	Montathie loam, 0 to 2 percent slopes, occasionally flooded	111.19	28.24	0	78	2W
FL	Falkner silt loam, level	62.04	15.76	0	77	2W
JU	Jena fine sandy loam, 0 to 2 percent slopes, occasionally flooded	52.02	13.21	0	68	3W
PUA	Prentiss fine sandy loam, 0 to 2 percent slopes	37.37	9.49	0	45	2W
CAA	Cahaba fine sandy loam, 0 to 2 percent slopes	32.29	8.2	0	53	1e
STA	Stough fine sandy loam, 0 to 2 percent slopes	28.0	7.11	0	33	2W
MO	Mooreville loam, occasionally flooded	22.82	5.8	0	75	2W
SAG2	Savannah fine sandy loam, 5 to 8 percent slopes, moderately eroded	20.32	5.16	0	28	3e
YMA	Yimville loam, 0 to 2 percent slopes	9.48	2.41	0	71	3W
RUB2	Ruston fine sandy loam, 2 to 5 percent slopes, moderately eroded	8.24	2.09	0	57	2e
SSA	Savannah fine sandy loam, 0 to 2 percent slopes	5.47	1.39	0	49	2e
SSB	Savannah fine sandy loam, 2 to 5 percent slopes	2.54	0.65	0	54	2e
W	Water	1.95	0.5	0	-	-
TOTALS		393.73(1)	100%	-	64.2	2.13

(\*) Total acres may differ in the second decimal compared to the sum of each acreage soil. This is due to a round error because we only show the acres of each soil with two decimal.



**MICHAEL OSWALT, ALC** | PRINCIPAL BROKER  
C: 662-719-3967 | michael@smalltownproperties.com

**DECK FAIR** | ASSOCIATE BROKER  
C: 662-801-4809 | deck@smalltownproperties.com

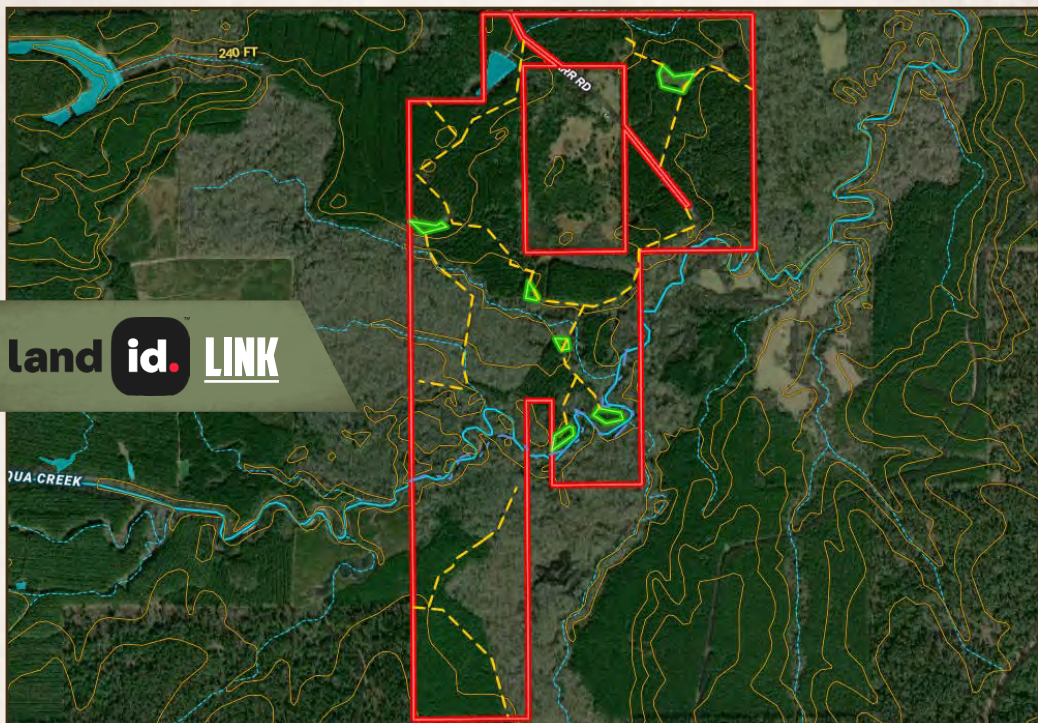
Information is believed to be accurate but not guaranteed.

4848 Main St. - Flora, MS 39071 | O: 769-888-2522 | smalltownproperties.com

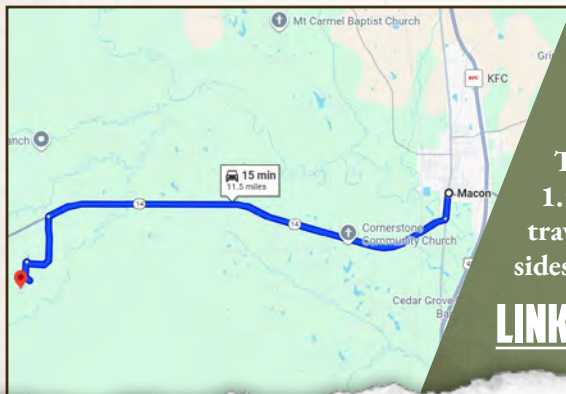


398 ± ACRES

NOXUBEE COUNTY, MISSISSIPPI



land id. LINK



Directions From Macon, MS: Travel 0.5 miles on Jefferson Street. Turn right on MS-14 and proceed 9 miles. Turn left on Hill Road and continue 1.5 miles. Turn left on Carr Road and travel 0.5 miles to the destination on both sides of the road.

[LINK TO GOOGLE MAP DIRECTIONS](#)



**MICHAEL OSWALT, ALC** | PRINCIPAL BROKER  
C: 662-719-3967 | michael@smalltownproperties.com

**DECK FAIR** | ASSOCIATE BROKER  
C: 662-801-4809 | deck@smalltownproperties.com

Information is believed to be accurate but not guaranteed.

4848 Main St. - Flora, MS 39071 | O: 769-888-2522 | smalltownproperties.com