

**65.61± ACRES**  
**RANKIN COUNTY, MS**  
**\$364,999**

POSTED  
NO TRESPASSING  
KEEP OUT



**SMALLTOWN**  
HUNTING PROPERTIES  
& REAL ESTATE<sup>SM</sup>

OFFICE (769) 888-2522 | [WWW.SMALLTOWNPROPERTIES.COM](http://WWW.SMALLTOWNPROPERTIES.COM)

# THE RANKIN 65.61

# PROPERTY PROFILE

## LOCATION:

- Saint Augustine Drive  
Pearl, MS 39208
- Rankin County
- 1.5± Miles S of I-20
- 6.7± Miles SE of Jackson
- 20± Miles S of Madison

## COORDINATES:

- 32.24556, -90.1283

## PROPERTY USE:

- Commercial
- Hunting
- Recreational
- Investment

## PROPERTY INFORMATION:

- 65.61± Acres
- Zoned C-3 Highway  
Commercial
- Ample Road Frontage
- Mixed Timber
- Richland Creek is South  
Boundary
- Railroad is North Boundary
- Multiple Streams
- Small Pond
- Internal Road System
- Deer & Turkey

## TAX INFORMATION:

- \$339.71 (2024)



**DENNIS WEST**

EAST MISSISSIPPI MANAGING BROKER

C: 601-248-4396 | O: 769-760-0005

dennis@smalltownproperties.com

2121 5th St., Ste 206 - Meridian, MS 39301

Information is believed to be accurate but not guaranteed.

[smalltownproperties.com](http://smalltownproperties.com)

**HUNTER MARLOW**

LAND SPECIALIST & REGISTERED FORESTER #2879

C: 601-701-3088 | O: 769-888-2522

hmarlow@smalltownproperties.com

4848 Main St. - Flora, MS 39071

# WELCOME TO THE RANKIN 65.61

**HAVE YOU BEEN LOOKING FOR THE PERFECT OPPORTUNITY TO HUNT WHITETAIL DEER AND WILD TURKEYS IN TOWN?** The Rankin 65.61 in Pearl checks every box: food, water, cover, internal roads, food plots, mature pines and hardwoods, access, YOU NAME IT! Tracts this size inside the city limits do NOT come up often at all.

This 65.61± acre Rankin County property boasts a healthy whitetail deer and wild turkey population, both being seen in numbers during inspections. Pairing well with the abundant natural food available, there are multiple spots ready to be planted in food plots to further benefit the property's wildlife. An old dirt pit on the east side of the property now supports a small pond and "thicket" for perfect deer bedding habitat.



**DENNIS WEST**  
EAST MISSISSIPPI MANAGING BROKER  
C: 601-248-4396 | O: 769-760-0005  
dennis@smalltownproperties.com  
2121 5th St., Ste 206 - Meridian, MS 39301

*Information is believed to be accurate but not guaranteed.*

[smalltownproperties.com](http://smalltownproperties.com)

**HUNTER MARLOW**  
LAND SPECIALIST & REGISTERED FORESTER #2879  
C: 601-701-3088 | O: 769-888-2522  
hmarlow@smalltownproperties.com  
4848 Main St. - Flora, MS 39071

# MORE ABOUT THE RANKIN 65.61

**COMMERCIAL INVESTORS** — The Rankin 65.61 is zoned C-3 Highway Commercial with the City of Pearl, providing an opportunity to put a list of businesses in place within the metro area. Located 1.5± miles south of Interstate 20 with railroad tracks as the north boundary and Richland Creek as the south boundary, the opportunities for a commercial investor are plentiful.

**If you are an outdoorsman seeking convenience without giving up quality hunting OR a commercial investor looking for your next property, call Hunter Marlow or Dennis West today for a private showing of the Rankin 65.61!**



**DENNIS WEST**  
EAST MISSISSIPPI MANAGING BROKER  
C: 601-248-4396 | O: 769-760-0005  
dennis@smalltownproperties.com  
2121 5th St., Ste 206 - Meridian, MS 39301

*Information is believed to be accurate but not guaranteed.*  
[smalltownproperties.com](http://smalltownproperties.com)

**HUNTER MARLOW**  
LAND SPECIALIST & REGISTERED FORESTER #2879  
C: 601-701-3088 | O: 769-888-2522  
hmarlow@smalltownproperties.com  
4848 Main St. - Flora, MS 39071

65.61± ACRES

RANKIN COUNTY, MISSISSIPPI



**DENNIS WEST**

EAST MISSISSIPPI MANAGING BROKER

C: 601-248-4396 | O: 769-760-0005

dennis@smalltownproperties.com

2121 5th St., Ste 206 - Meridian, MS 39301

*Information is believed to be accurate but not guaranteed.*

[smalltownproperties.com](http://smalltownproperties.com)

**HUNTER MARLOW**

LAND SPECIALIST & REGISTERED FORESTER #2879

C: 601-701-3088 | O: 769-888-2522

hmarlow@smalltownproperties.com

4848 Main St. - Flora, MS 39071

65.61± ACRES

RANKIN COUNTY, MISSISSIPPI



**DENNIS WEST**  
 EAST MISSISSIPPI MANAGING BROKER  
 C: 601-248-4396 | O: 769-760-0005  
 dennis@smalltownproperties.com  
 2121 5th St., Ste 206 - Meridian, MS 39301

*Information is believed to be accurate but not guaranteed.*

[smalltownproperties.com](http://smalltownproperties.com)

**HUNTER MARLOW**  
 LAND SPECIALIST & REGISTERED FORESTER #2879  
 C: 601-701-3088 | O: 769-888-2522  
 hmarlow@smalltownproperties.com  
 4848 Main St. - Flora, MS 39071

65.61± ACRES

RANKIN COUNTY, MISSISSIPPI



**DENNIS WEST**

EAST MISSISSIPPI MANAGING BROKER

C: 601-248-4396 | O: 769-760-0005

dennis@smalltownproperties.com

2121 5th St., Ste 206 - Meridian, MS 39301

*Information is believed to be accurate but not guaranteed.*

[smalltownproperties.com](http://smalltownproperties.com)

**HUNTER MARLOW**

LAND SPECIALIST & REGISTERED FORESTER #2879

C: 601-701-3088 | O: 769-888-2522

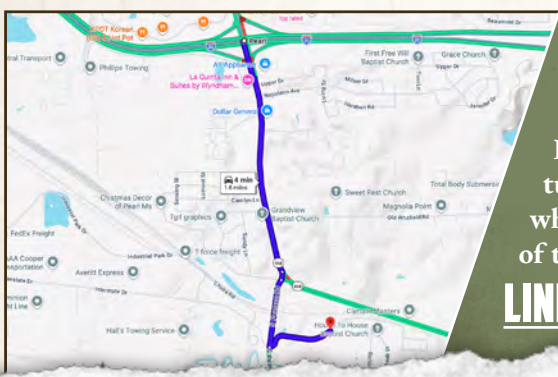
hmarlow@smalltownproperties.com

4848 Main St. - Flora, MS 39071

65.61± ACRES RANKIN COUNTY, MISSISSIPPI



land id. LINK



Directions From the Intersection of Highway 468 and I-20 in Pearl, MS: Travel on South Pearson Road for 1.1 miles. Merge onto South Pearson Road, continue for 0.3 miles, and then turn left onto Saint Augustine Drive where the property will be on both sides of the road.

**LINK TO GOOGLE MAP DIRECTIONS**



**DENNIS WEST**  
 EAST MISSISSIPPI MANAGING BROKER  
 C: 601-248-4396 | O: 769-760-0005  
 dennis@smalltownproperties.com  
 2121 5th St., Ste 206 - Meridian, MS 39301



**SMALLTOWN**  
 HUNTING PROPERTIES  
 & REAL ESTATE™

*Information is believed to be accurate but not guaranteed.*

[smalltownproperties.com](http://smalltownproperties.com)



**HUNTER MARLOW**  
 LAND SPECIALIST & REGISTERED FORESTER #2879  
 C: 601-701-3088 | O: 769-888-2522  
 hmarlow@smalltownproperties.com  
 4848 Main St. - Flora, MS 39071