

13± ACRES
HALE COUNTY, AL
\$58,500



SMALLTOWN
HUNTING PROPERTIES
& REAL ESTATESM

OFFICE (334) 931-0090 | WWW.SMALLTOWNPROPERTIES.COM

THE HALE 13

PROPERTY PROFILE

LOCATION:

- County Road 51
Greensboro, AL 36744
- Hale County
- 10± Miles NE of Greensboro
- 22.5± Miles SE of Moundville
- 31± Miles E of Eutaw
- 35± Miles NE of Demopolis
- 40± Miles S of Tuscaloosa

COORDINATES:

- 32.788466, -87.488040

TAX INFORMATION:

- Tax Code 1
- 2025 Taxes: \$72.98

PROPERTY USE:

- Hunting
- Recreational
- Timber Investment
- Potential Home/Cabin Site

PROPERTY INFORMATION:

- 13± Acres
- 1,042'± Road Frontage
- Cleared Homesite
- Gently Rolling Terrain
- Thinned Pine Timber
- Utilities Available at the Road
- Abundant Wildlife
- Additional Acreage Available



SMALLTOWN
HUNTING PROPERTIES
& REAL ESTATESM

SHAWN SIMPSON

LAND SPECIALIST

C: 205-242-9184

O: 334-931-0090

shawn@smalltownproperties.com

2121 5th Street, Ste 206 - Meridian, MS 39301

smalltownproperties.com

Information is believed to be accurate but not guaranteed.

WELCOME TO THE HALE 13

WELCOME TO THE HALE 13, A VERSATILE 13± ACRE TRACT LOCATED OUTSIDE OF GREENSBORO IN HALE COUNTY, ALABAMA. With approximately 1,042± feet of paved road frontage on County Road 51 and power and water available at the road, this property is well suited for anyone looking to build their forever home, create a weekend getaway, or invest in a manageable piece of Alabama land.

The Hale 13 features loblolly pine timber that was professionally thinned, creating a clean and attractive setting with multiple possibilities for a homesite, cabin, or recreational retreat. The gently rolling terrain and established timber provide privacy, natural beauty, and long-term value.



SMALLTOWN
HUNTING PROPERTIES
& REAL ESTATESM

SHAWN SIMPSON

LAND SPECIALIST

C: 205-242-9184

O: 334-931-0090

shawn@smalltownproperties.com

2121 5th Street, Ste 206 - Meridian, MS 39301

smalltownproperties.com

Information is believed to be accurate but not guaranteed.

MORE ABOUT THE HALE 13

Located 10± miles north of Greensboro and 40± miles south of Tuscaloosa, this area is well known for its abundant wildlife and strong outdoor recreation opportunities. The Hale 13 would make an excellent choice for the outdoorsman looking for a smaller, more affordable tract to enjoy hunting, recreation, and time in the outdoors. Whether you're looking to build your forever home, establish a hunting retreat, or own an affordable piece of Alabama land, the Hale 13 offers a great combination of accessibility, privacy, and potential. Additional acreage is available.

Contact Shawn Simpson today for more information and to schedule a private tour.



SMALLTOWN
HUNTING PROPERTIES
& REAL ESTATESM

SHAWN SIMPSON

LAND SPECIALIST

C: 205-242-9184

O: 334-931-0090

shawn@smalltownproperties.com

2121 5th Street, Ste 206 - Meridian, MS 39301

smalltownproperties.com

Information is believed to be accurate but not guaranteed.

13± ACRES

HALE COUNTY, ALABAMA



property lines are approximate



SMALLTOWN
HUNTING PROPERTIES
& REAL ESTATESM

SHAWN SIMPSON

LAND SPECIALIST

C: 205-242-9184

O: 334-931-0090

shawn@smalltownproperties.com

2121 5th Street, Ste 206 - Meridian, MS 39301

smalltownproperties.com

Information is believed to be accurate but not guaranteed.

13± ACRES

HALE COUNTY, ALABAMA



SMALLTOWN
HUNTING PROPERTIES
& REAL ESTATESM

SHAWN SIMPSON

LAND SPECIALIST

C: 205-242-9184

O: 334-931-0090

shawn@smalltownproperties.com

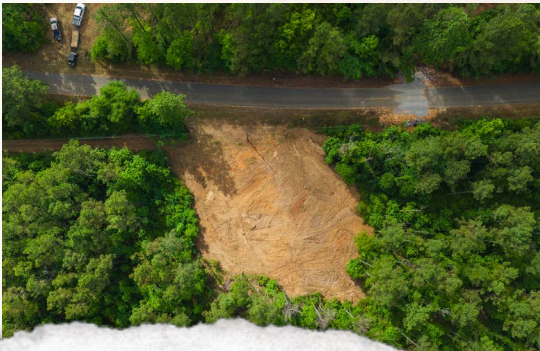
2121 5th Street, Ste 206 - Meridian, MS 39301

smalltownproperties.com

Information is believed to be accurate but not guaranteed.

13± ACRES

HALE COUNTY, ALABAMA



SMALLTOWN

HUNTING PROPERTIES
& REAL ESTATESM

SHAWN SIMPSON

LAND SPECIALIST

C: 205-242-9184

O: 334-931-0090

shawn@smalltownproperties.com

2121 5th Street, Ste 206 - Meridian, MS 39301

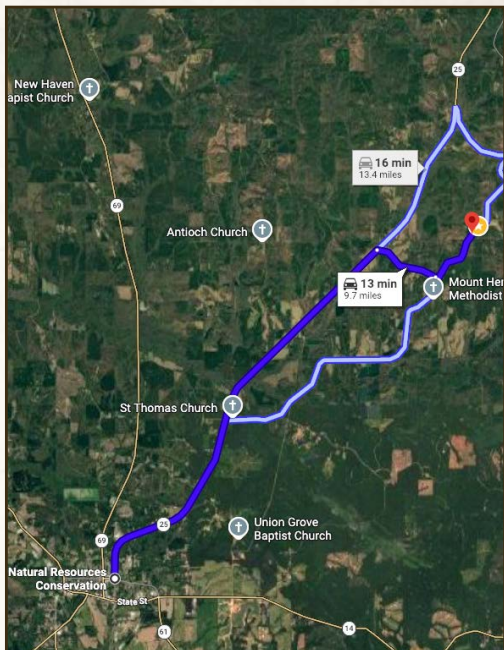
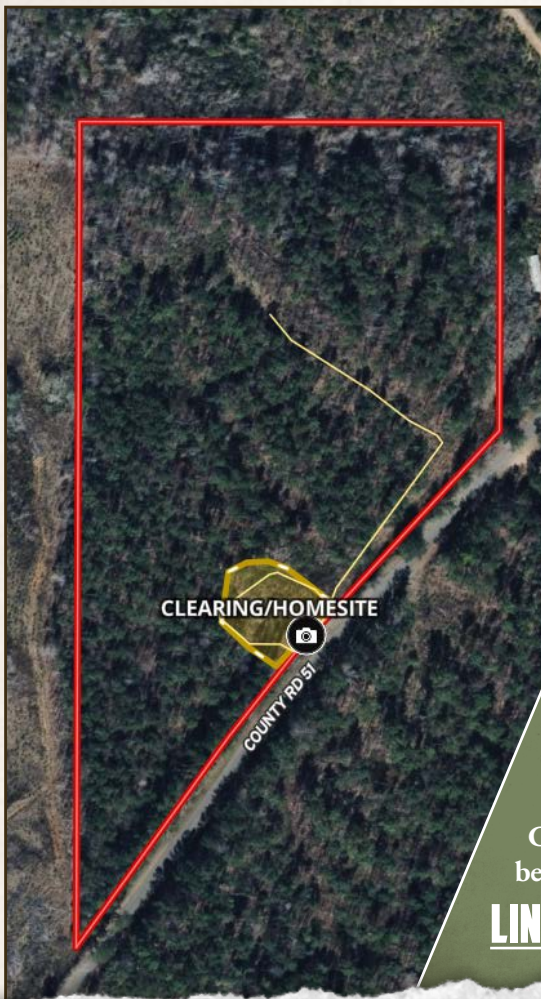
smalltownproperties.com

Information is believed to be accurate but not guaranteed.

13± ACRES

HALE COUNTY, ALABAMA

land id. LINK



Directions From Greensboro, AL:
Travel north on AL-25 for 7.5 miles.
Turn right onto County Road 32 and
continue for 1.1 miles. Turn left onto
County Road 51, and the property will
be on the left in 1 mile.

[LINK TO GOOGLE MAP DIRECTIONS](#)



SMALLTOWN
HUNTING PROPERTIES
& REAL ESTATESM

SHAWN SIMPSON
LAND SPECIALIST
C: 205-242-9184
O: 334-931-0090
shawn@smalltownproperties.com
2121 5th Street, Ste 206 - Meridian, MS 39301
smalltownproperties.com

Information is believed to be accurate but not guaranteed.