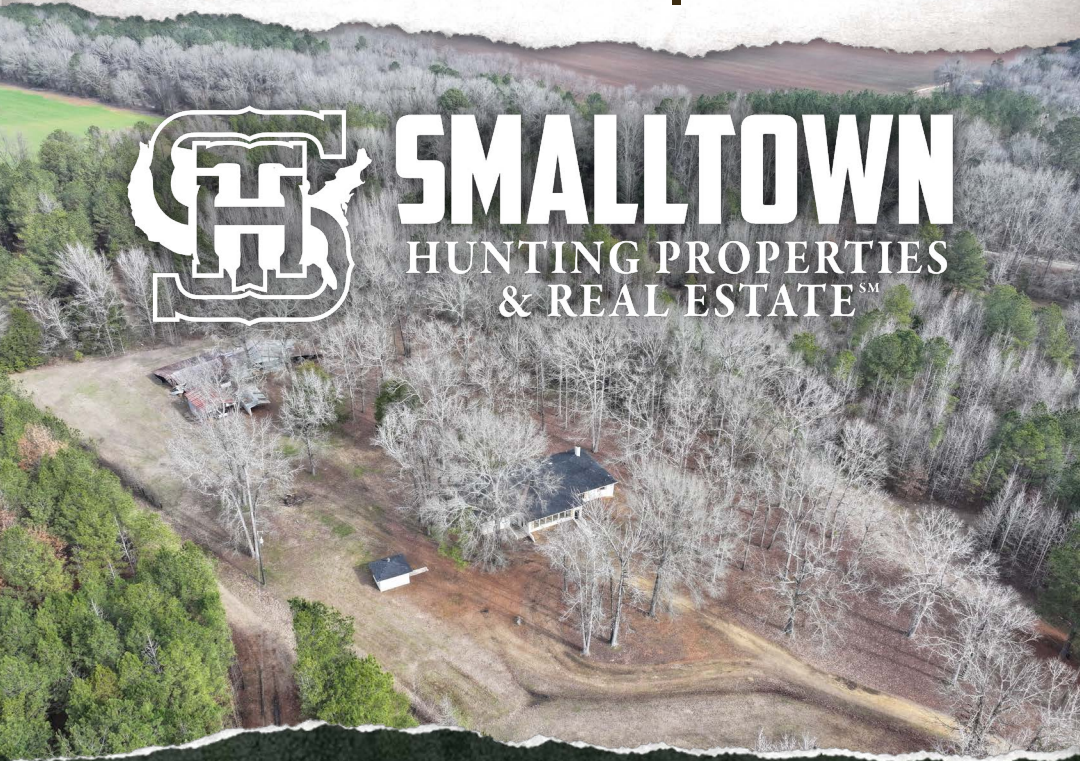




9385 NASHVILLE FERRY ROAD EAST
COLUMBUS | LOWNDES COUNTY, MS
A HOME ON 3.8± ACRES | \$329,900



SMALLTOWN
HUNTING PROPERTIES
& REAL ESTATESM



OFFICE (662) 338-2027 | WWW.SMALLTOWNPROPERTIES.COM

9385 NASHVILLE FERRY ROAD EAST

PROPERTY PROFILE

LOCATION:

- 9385 Nashville Ferry Road East
Columbus, MS 39702
- Lowndes County
- 4± Miles N of the
Tombigbee Waterway
- 7± Miles S of New Hope
- 40± Miles SE of Starkville

COORDINATES:

- 33.3758, -88.3417

TAX INFORMATION:

- Tax Code Area 3006
- \$1,377.63 (2024)

PROPERTY USE:

- Residential
- Recreational
- Mini-Farm

PROPERTY INFORMATION:

- Home on 3.8± Acres
- 2,384.8± SqFt Heated & Cooled
- Spacious Floor Plan
with Large Rooms
- Large Primary Suite
- Oversized Utility Room
- 750± SqFt Bonus Room
- Sunroom
- Multiple Barns & Sheds
- New Hope School District



SMALLTOWN
HUNTING PROPERTIES
& REAL ESTATESM

JACOB HANSON

LAND SPECIALIST

C: 662-386-3814

O: 662-338-2027

jacob@smalltownproperties.com

501 Hwy 12 W, Ste 150B - Starkville, MS 39759

smalltownproperties.com

Information is believed to be accurate but not guaranteed.

WELCOME TO 9385 NASHVILLE FERRY ROAD EAST

WELCOME HOME TO THIS BEAUTIFULLY REMODELED COUNTRY RETREAT, LOCATED AT 9385 NASHVILLE FERRY ROAD EAST IN COLUMBUS, MISSISSIPPI. This charming Lowndes County property offers a spacious, well-designed floor plan with large, thoughtfully arranged rooms perfect for comfortable living. The 2,384.8± square-foot home sits on 3.8± acres, is fenced on three sides, and is naturally wooded, giving you both security and seclusion while still being located in the desirable New Hope School District and just minutes from the Tombigbee Waterway. You'll love the quiet, low-traffic road, adding to the peaceful setting.

Inside, the home features a very spacious primary suite and an oversized utility room, providing exceptional convenience and storage. A standout highlight is the 750+ square foot heated and cooled bonus room, offering endless possibilities for a game room, home office, gym, or additional living space.

Multiple barns and sheds are ready for storage, livestock, or hobby use. The large heated and cooled sunroom provides a versatile year-round space to relax and enjoy the serene surroundings.

Contact Jacob Hanson today to schedule a private showing and make 9385 Nashville Ferry Road East your new address.

**CLICK HERE TO TAKE
A VIRTUAL TOUR**



SMALLTOWN
HUNTING PROPERTIES
& REAL ESTATESM

JACOB HANSON

LAND SPECIALIST

C: 662-386-3814

O: 662-338-2027

jacob@smalltownproperties.com

501 Hwy 12 W, Ste 150B - Starkville, MS 39759

smalltownproperties.com

Information is believed to be accurate but not guaranteed.

A HOME ON 3.8± ACRES

9385 NASHVILLE FERRY ROAD EAST

COLUMBUS

LOWNDES COUNTY, MISSISSIPPI



SMALLTOWN

HUNTING PROPERTIES
& REAL ESTATESM

JACOB HANSON

LAND SPECIALIST

C: 662-386-3814

O: 662-338-2027

jacob@smalltownproperties.com

501 Hwy 12 W, Ste 150B - Starkville, MS 39759

smalltownproperties.com

Information is believed to be accurate but not guaranteed.



SMALLTOWN

HUNTING PROPERTIES
& REAL ESTATESM

JACOB HANSON

LAND SPECIALIST

C: 662-386-3814

O: 662-338-2027

jacob@smalltownproperties.com

501 Hwy 12 W, Ste 150B - Starkville, MS 39759

smalltownproperties.com

Information is believed to be accurate but not guaranteed.



SMALLTOWN

HUNTING PROPERTIES
& REAL ESTATESM

JACOB HANSON

LAND SPECIALIST

C: 662-386-3814

O: 662-338-2027

jacob@smalltownproperties.com

501 Hwy 12 W, Ste 150B - Starkville, MS 39759

smalltownproperties.com

Information is believed to be accurate but not guaranteed.



SMALLTOWN

HUNTING PROPERTIES
& REAL ESTATESM

JACOB HANSON

LAND SPECIALIST

C: 662-386-3814

O: 662-338-2027

jacob@smalltownproperties.com

501 Hwy 12 W, Ste 150B - Starkville, MS 39759

smalltownproperties.com

Information is believed to be accurate but not guaranteed.



SMALLTOWN
HUNTING PROPERTIES
& REAL ESTATESM

JACOB HANSON

LAND SPECIALIST

C: 662-386-3814

O: 662-338-2027

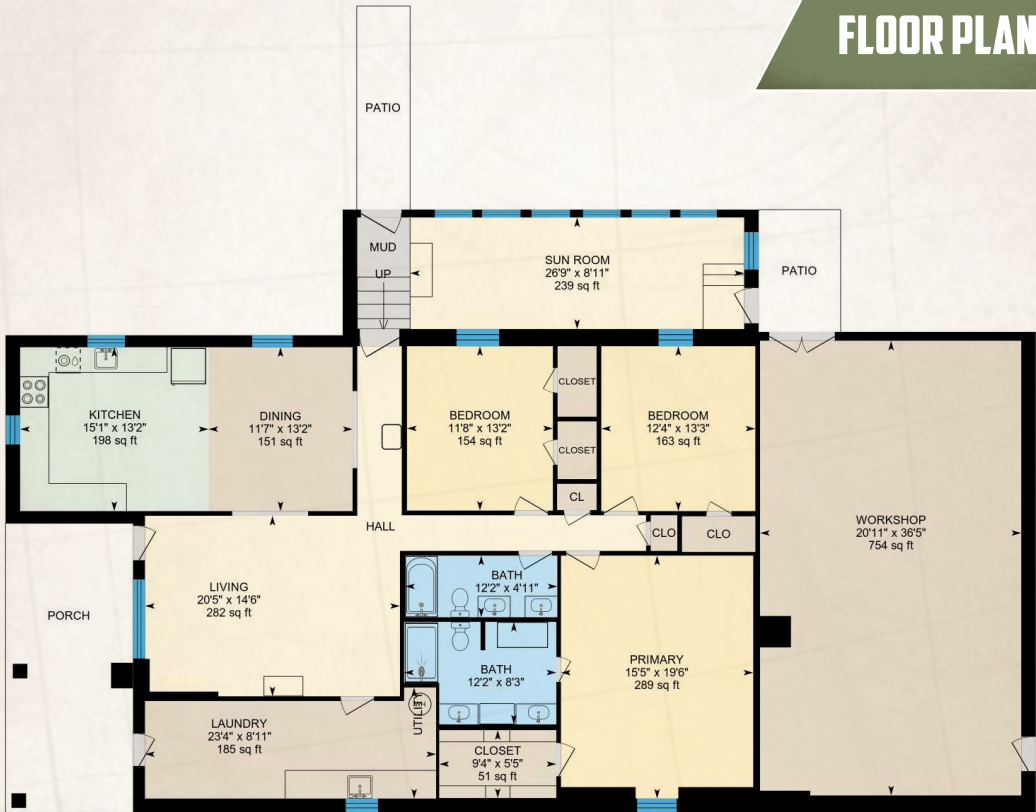
jacob@smalltownproperties.com

501 Hwy 12 W, Ste 150B - Starkville, MS 39759

smalltownproperties.com

Information is believed to be accurate but not guaranteed.

FLOOR PLAN



SMALLTOWN
HUNTING PROPERTIES
& REAL ESTATESM

JACOB HANSON

LAND SPECIALIST

C: 662-386-3814

O: 662-338-2027

jacob@smalltownproperties.com

501 Hwy 12 W, Ste 150B - Starkville, MS 39759

smalltownproperties.com

Information is believed to be accurate but not guaranteed.



land id. LINK



Directions From New Hope, MS:
Travel on New Hope Road for 2 miles. Turn left onto MS-69 South and continue for 3 miles. Turn right onto Halbert Road and proceed for 1.8 miles. Turn right onto Nashville Ferry Road East and the destination will be on the right.

[LINK TO GOOGLE MAP DIRECTIONS](#)



SMALLTOWN
HUNTING PROPERTIES
& REAL ESTATESM

JACOB HANSON

LAND SPECIALIST

C: 662-386-3814

O: 662-338-2027

jacob@smalltownproperties.com

501 Hwy 12 W, Ste 150B - Starkville, MS 39759

smalltownproperties.com

Information is believed to be accurate but not guaranteed.