

**0.42± ACRE CORNER LOT
JEFFERSON COUNTY, AL**

\$20,000



SMALLTOWN
HUNTING PROPERTIES
& REAL ESTATESM

THE JEFFERSON 0.42

PROPERTY PROFILE

LOCATION:

- 7730 Highway 75
Pinson, AL 35126
- Jefferson County
- 2.1± Miles NE of
Pinson High School
- 12± Miles NW of Trussville
- 14.6± Miles NE of Gardendale
- 21.2± Miles NE of
Downtown Birmingham
- 52.02± Miles SW of Gadsden

COORDINATES:

- 33.72914, -86.65436

PROPERTY USE:

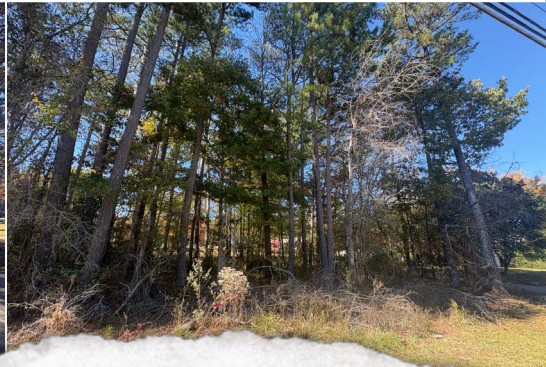
- Potential Home Site
- Investment

PROPERTY INFORMATION:

- 0.42± Acre Corner Lot
- Road Frontage
- Access to Utilities

TAX INFORMATION:

- Tax Code Area:
09-00-16-3-003-001.000
- 2024 Taxes: \$273.55



SMALLTOWN
HUNTING PROPERTIES
& REAL ESTATESM

MORGAN BEAVER

LAND SPECIALIST

C: 205-876-6841

O: 334-931-0090

morgan@smalltownproperties.com

2121 5th Street, Ste 206 - Meridian, MS 39301

smalltownproperties.com

Information is believed to be accurate but not guaranteed.

WELCOME TO THE JEFFERSON 0.42

IF YOU ARE SEARCHING FOR UNDEVELOPED LAND IN JEFFERSON COUNTY, ALABAMA, TAKE ADVANTAGE OF AN EXCELLENT OPPORTUNITY IN THE GROWING AREA OF PINSON. The 0.42± acre corner lot, with road frontage on Highway 75, offers a great setting for your new home, with convenient access to local schools, shopping, and major highways. Utilities are accessible, and the property is located in the front of an established residential area, providing a quiet setting while remaining close to all amenities.

Whether you're looking to build your primary residence or invest in future development, this property offers flexibility and potential!

**Call Morgan Beaver today to learn more
and experience #TheSmallTownWay!**



SMALLTOWN
HUNTING PROPERTIES
& REAL ESTATESM

MORGAN BEAVER

LAND SPECIALIST

C: 205-876-6841

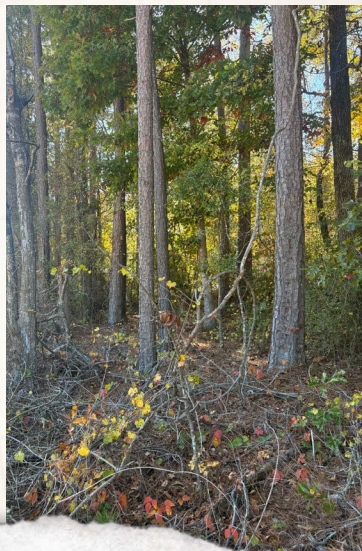
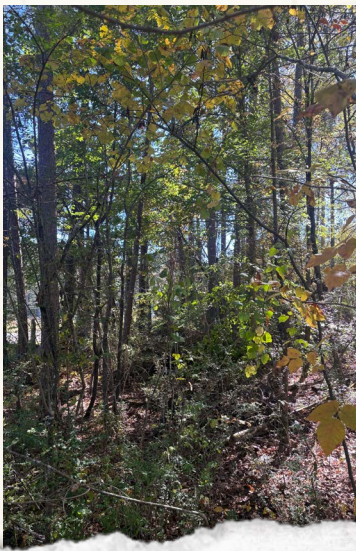
O: 334-931-0090

morgan@smalltownproperties.com

2121 5th Street, Ste 206 - Meridian, MS 39301

smalltownproperties.com

Information is believed to be accurate but not guaranteed.



SMALLTOWN

HUNTING PROPERTIES
& REAL ESTATESM

MORGAN BEAVER

LAND SPECIALIST

C: 205-876-6841

O: 334-931-0090

morgan@smalltownproperties.com

2121 5th Street, Ste 206 - Meridian, MS 39301

smalltownproperties.com

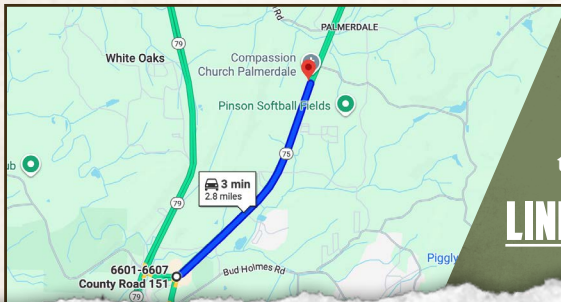
Information is believed to be accurate but not guaranteed.

0.42± ACRE CORNER LOT

JEFFERSON COUNTY, ALABAMA



land id. LINK



Directions From the Intersection of
Pinson Blvd and AL-75N in Pinson,
AL: Travel 2.8 miles on AL-75 N to
the destination on the left.

[LINK TO GOOGLE MAP DIRECTIONS](#)



SMALLTOWN
HUNTING PROPERTIES
& REAL ESTATESM

MORGAN BEAVER

LAND SPECIALIST

C: 205-876-6841

O: 334-931-0090

morgan@smalltownproperties.com

2121 5th Street, Ste 206 - Meridian, MS 39301

smalltownproperties.com

Information is believed to be accurate but not guaranteed.

