



**SMALLTOWN**  
HUNTING PROPERTIES  
& REAL ESTATE<sup>SM</sup>

**24.04± ACRES**  
**CRENSHAW COUNTY, AL**  
**\$99,000**



OFFICE (334) 931-0090 | [WWW.SMALLTOWNPROPERTIES.COM](http://WWW.SMALLTOWNPROPERTIES.COM)

# THE CRENSHAW 24.04

## PROPERTY PROFILE

### LOCATION:

- Pusley Ridge Road  
Highland Home, AL 36041
- Crenshaw County
- 7.6± Miles SW of Highland Home
- 15.9± Miles NW of Luverne
- 39.6± Miles S of Montgomery

### COORDINATES:

- 31.881719, -86.362053

### TAX INFORMATION:

- Parcel: 03-08-33-0-000-009-0000
- \$59.40 for 2024

### PROPERTY USE:

- Potential Home Site
- Recreational
- Hunting

### PROPERTY INFORMATION:

- 24.04± Acres
- Pine/Hardwood Timber
- Gravel Road Frontage
- Water and Electricity  
Along the Right-of-Way



**SMALLTOWN**  
HUNTING PROPERTIES  
& REAL ESTATE<sup>SM</sup>

**RUSS WILKERSON**  
LAND & POULTRY SPECIALIST

C: 334-268-9098

O: 334-931-0090

[russ@smalltownproperties.com](mailto:russ@smalltownproperties.com)

2121 5th Street, Ste 206 - Meridian, MS 39301

[smalltownproperties.com](http://smalltownproperties.com)

Information is believed to be accurate but not guaranteed.



# WELCOME TO THE CRENSHAW 24.04

**WELCOME TO A BLANK CANVAS WITH ENDLESS POTENTIAL IN CRENSHAW COUNTY, ALABAMA!** Located on Pulsey Ridge Road less than eight miles from Highland Home, a versatile 24± acre property offers an excellent opportunity for a private homesite or recreational retreat. The tract features gravel road frontage with potential access to electricity and water utilities.

The land is a beautiful mix of mature hardwood and pine timber, ideal for hunting, nature enjoyment, or future development. A spacious homesite is already established, adorned with mature pecan and oak trees, offering a picturesque setting with plenty of shade and character. With just minimal mulching needed, the property is ready for your vision. Enjoy the peace and privacy of rural living while remaining convenient—just 20 minutes from Luverne and 40 minutes from Montgomery.

**Take advantage of this unique opportunity;  
contact Russ Wilkerson today!**



**SMALLTOWN**  
HUNTING PROPERTIES  
& REAL ESTATE<sup>SM</sup>

**RUSS WILKERSON**  
LAND & POULTRY SPECIALIST

C: 334-268-9098

O: 334-931-0090

[russ@smalltownproperties.com](mailto:russ@smalltownproperties.com)

2121 5th Street, Ste 206 - Meridian, MS 39301

[smalltownproperties.com](http://smalltownproperties.com)

Information is believed to be accurate but not guaranteed.



**24.04± ACRES**

**CRENSHAW COUNTY, ALABAMA**



**SMALLTOWN**  
HUNTING PROPERTIES  
& REAL ESTATE<sup>SM</sup>

**RUSS WILKERSON**  
LAND & POULTRY SPECIALIST

**C: 334-268-9098**

**O: 334-931-0090**

**[russ@smalltownproperties.com](mailto:russ@smalltownproperties.com)**

**2121 5th Street, Ste 206 - Meridian, MS 39301**

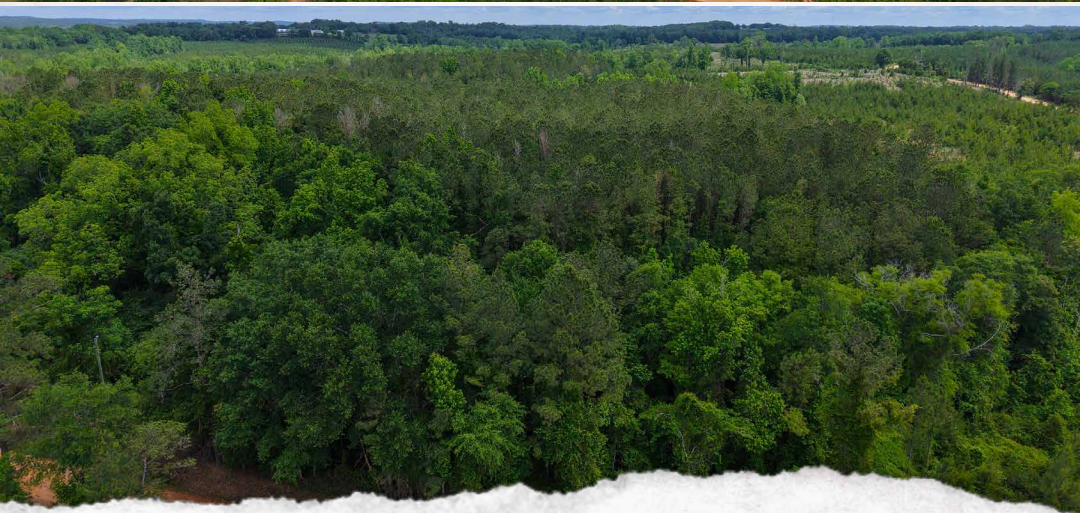
**[smalltownproperties.com](http://smalltownproperties.com)**

Information is believed to be accurate but not guaranteed.



**24.04± ACRES**

**CRENSHAW COUNTY, ALABAMA**



**SMALLTOWN**  
HUNTING PROPERTIES  
& REAL ESTATE<sup>SM</sup>

**RUSS WILKERSON**  
LAND & POULTRY SPECIALIST

C: 334-268-9098

O: 334-931-0090

[russ@smalltownproperties.com](mailto:russ@smalltownproperties.com)

2121 5th Street, Ste 206 - Meridian, MS 39301

[smalltownproperties.com](http://smalltownproperties.com)

Information is believed to be accurate but not guaranteed.



24.04± ACRES

CRENSHAW COUNTY, ALABAMA



**SMALLTOWN**  
HUNTING PROPERTIES  
& REAL ESTATE<sup>SM</sup>

**RUSS WILKERSON**  
LAND & POULTRY SPECIALIST

C: 334-268-9098

O: 334-931-0090

[russ@smalltownproperties.com](mailto:russ@smalltownproperties.com)

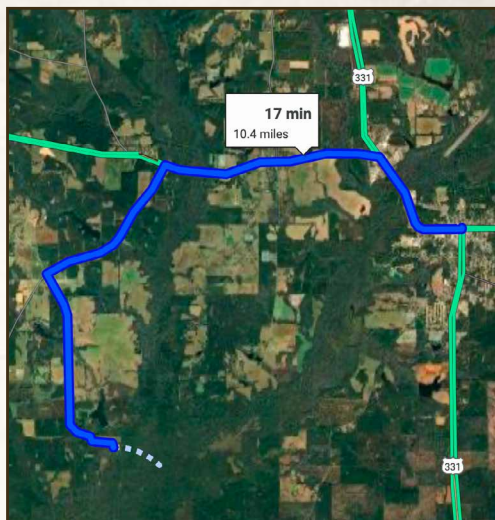
2121 5th Street, Ste 206 - Meridian, MS 39301

[smalltownproperties.com](http://smalltownproperties.com)

Information is believed to be accurate but not guaranteed.

**24.04± ACRES** CRENSHAW COUNTY, ALABAMA

**land id. LINK**



Directions From Luverne, AL: Travel 8.2 miles north on US-331/W 3rd Street. Turn left on Honoraville Road and continue 4 miles. Turn right on Mothershed Road and proceed 1.5 miles. Turn right on Mary Daniel Road and travel 1.2 miles. Continue straight on Scrugham Road for 0.9 miles. Turn left on Pusley Ridge Road and in 0.2 miles the destination will be on the right.

**LINK TO GOOGLE MAP DIRECTIONS**



**SMALLTOWN**  
HUNTING PROPERTIES  
& REAL ESTATE<sup>SM</sup>

**RUSS WILKERSON**  
LAND & POULTRY SPECIALIST

C: 334-268-9098

O: 334-931-0090

[russ@smalltownproperties.com](mailto:russ@smalltownproperties.com)

2121 5th Street, Ste 206 - Meridian, MS 39301

[smalltownproperties.com](http://smalltownproperties.com)

Information is believed to be accurate but not guaranteed.