



SMALLTOWN

HUNTING PROPERTIES
& REAL ESTATESM

19.49± ACRES WITH A HOME
HOWARD COUNTY, AR

\$200,000

OFFICE (479) 588-1034B | WWW.SMALLTOWNPROPERTIES.COM

THE HOWARD 19.49

PROPERTY PROFILE

LOCATION:

- 136 Dalrymple Loop
Umpire, AR 71971
- Howard County
- 5.7± Miles NE of the
Howard County WMA
- 10.1± Miles E of the
Cossatot River State Park
- 10.4± Miles SW of Shady Lake
- 11.6± Miles SW of
the Caney Creek WMA
- 11.7± Miles N of Dierks Lake
- 13.6± Miles NE of Gillham Lake
- 19± Miles E of Wickes
- 19.2± Miles W of
Lake Greeson WMA
- 34± Miles W of Glenwood
- 36± Miles NE of DeQueen

COORDINATES:

- 34.278670 -94.080019

PROPERTY INFORMATION:

- 19.49± Total Acres
- 1.6± Acre Pond
- 520± SqFt Home
- Office Building
- Road Frontage
- Pasture
- Water Well
- Access to Rural Water
- Electricity
- Decommissioned Swine Farm
with Infrastructure

PROPERTY USE:

- Farm
- Residential
- Investment
- Hunting and Fishing Camp

TAX INFORMATION:

- Parcel Number: 001-00443-0000
- \$316.54



SMALLTOWN
HUNTING PROPERTIES
& REAL ESTATESM

JAMES JACOBS

LAND SPECIALIST

C: 479-234-8520

O: 479-588-1034

james@smalltownproperties.com

5607 Hwy 71 S - Cove, AR 71937

smalltownproperties.com

Information is believed to be accurate but not guaranteed.



WELCOME TO THE HOWARD 19.49

WELCOME TO THE HOWARD 19.49 LOCATED IN THE HEART OF SPORTSMAN COUNTRY IN UMPIRE, ARKANSAS, PERFECTLY SUITED FOR OUTDOOR ADVENTURE. The 19.49± acre tract is situated off Dalrymple Loop, within 20 miles of three Wildlife Management Areas, one of which is less than two miles away. Additionally, there are three lakes nearby.

If you are looking for farmland or a business opportunity, the Howard County property includes a decommissioned swine operation with infrastructure in place, including well water and electricity. A 1.6± acre pond and pastureland support livestock. Two structures are in place: a 520± square foot home with two bedrooms and one bath, and an office building.

The Howard 19.49 is definitely an opportunity for a feedlot-style operation or livestock transport operation with ample parking for accommodating tractor trailers.

To learn more and schedule a private showing, contact J. Jacobs today!



SMALLTOWN
HUNTING PROPERTIES
& REAL ESTATESM

JAMES JACOBS

LAND SPECIALIST

C: 479-234-8520

O: 479-588-1034

james@smalltownproperties.com

5607 Hwy 71 S - Cove, AR 71937

smalltownproperties.com

Information is believed to be accurate but not guaranteed.

19.49± ACRES WITH A HOME

HOWARD COUNTY, ARKANSAS



SMALLTOWN
HUNTING PROPERTIES
& REAL ESTATESM

JAMES JACOBS

LAND SPECIALIST

C: 479-234-8520

O: 479-588-1034

james@smalltownproperties.com

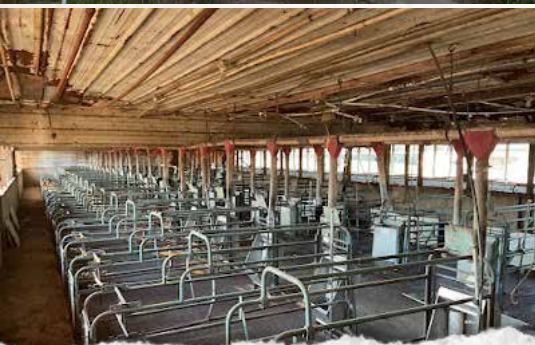
5607 Hwy 71 S - Cove, AR 71937

smalltownproperties.com

Information is believed to be accurate but not guaranteed.

19.49± ACRES WITH A HOME

HOWARD COUNTY, ARKANSAS



SMALLTOWN
HUNTING PROPERTIES
& REAL ESTATESM

JAMES JACOBS

LAND SPECIALIST

C: 479-234-8520

O: 479-588-1034

james@smalltownproperties.com

5607 Hwy 71 S - Cove, AR 71937

smalltownproperties.com

Information is believed to be accurate but not guaranteed.

19.49± ACRES WITH A HOME **HOWARD COUNTY, ARKANSAS**



SMALLTOWN
HUNTING PROPERTIES
& REAL ESTATESM

JAMES JACOBS

LAND SPECIALIST

C: 479-234-8520

O: 479-588-1034

james@smalltownproperties.com

5607 Hwy 71 S - Cove, AR 71937

smalltownproperties.com

Information is believed to be accurate but not guaranteed.

19.49± ACRES WITH A HOME

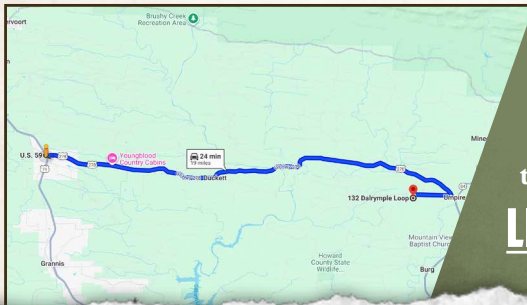
HOWARD COUNTY, ARKANSAS



land id.
LINK

Directions From Wickes, AR:
Travel 17.4 miles east on US Highway 378. Turn right on School Street and make an immediate right on Battle Hill Road. Continue 1.5 miles and make a slight left on Dalrymple Loop. Travel 0.2 miles to the property on the right next to the water tower.

LINK TO GOOGLE MAP DIRECTIONS



SMALLTOWN
HUNTING PROPERTIES
& REAL ESTATESM

JAMES JACOBS

LAND SPECIALIST

C: 479-234-8520

O: 479-588-1034

james@smalltownproperties.com

5607 Hwy 71 S - Cove, AR 71937

smalltownproperties.com

Information is believed to be accurate but not guaranteed.

