

28.92± ACRES
CRENSHAW COUNTY, AL
\$174,000



SMALLTOWN
HUNTING PROPERTIES
& REAL ESTATESM

OFFICE (334) 931-0090 | WWW.SMALLTOWNPROPERTIES.COM

THE CRENSHAW 28.92

PROPERTY PROFILE

LOCATION:

- Old Three Notch Road
Glenwood, AL 36034
- Crenshaw County
- 6.6± Miles SE of Brantley
- 12.7± Miles S of Glenwood
- 25.2± Miles SW of Troy

COORDINATES:

- 31.5569, -86.1732

TAX INFORMATION:

- 2025 Taxes \$73.41
- Tax ID 1370190

PROPERTY USE:

- Hunting
- Livestock
- Recreational
- Potential Home Site

PROPERTY INFORMATION:

- 28.92± Total Acres
- 24.30± Acres Clear-Cut
- 4.62± Acres of Pasture
- Highway Frontage
- 24x32 Pole Barn
- Brantley School District
- County Water



SMALLTOWN
HUNTING PROPERTIES
& REAL ESTATESM

TRACY FLOWERS

LAND SPECIALIST

C: 334-303-2191

O: 334-931-0090

tracy@smalltownproperties.com

2121 5th Street, Ste 206 - Meridian, MS 39301

smalltownproperties.com

Information is believed to be accurate but not guaranteed.

WELCOME TO THE CRENSHAW 28.92

IF YOU ARE SEARCHING FOR A RECREATIONAL RETREAT, A HUNTING PROPERTY, OR AN IDEAL HOMESITE, THE CRENSHAW 28.92 IS WORTH CONSIDERING! Situated in Glenwood, Alabama, approximately 25 miles southwest of Troy, this 28.92± acre property offers excellent highway frontage. The versatile property includes 4.62± acres of pasture with a 24×32 pole barn, ideal for livestock or storage. A 24.30± acre portion was previously clear-cut and left open for new use.

Whether you're looking for a place to build your dream home or a getaway, this Crenshaw County tract offers endless potential in a great location.

Contact Tracy Flowers today to schedule a personal tour and experience #TheSmallTownWay!



SMALLTOWN
HUNTING PROPERTIES
& REAL ESTATESM

TRACY FLOWERS

LAND SPECIALIST

C: 334-303-2191

O: 334-931-0090

tracy@smalltownproperties.com

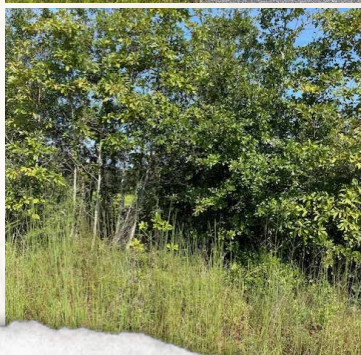
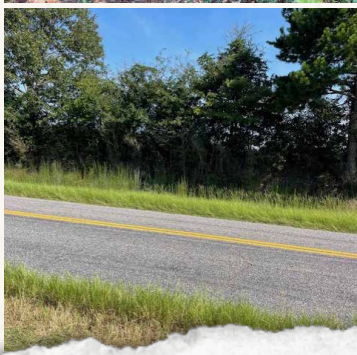
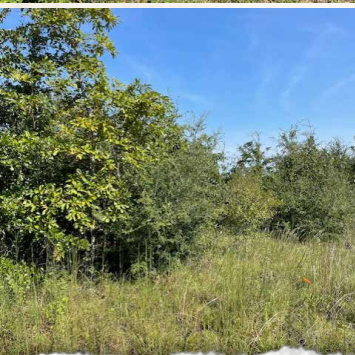
2121 5th Street, Ste 206 - Meridian, MS 39301

smalltownproperties.com

Information is believed to be accurate but not guaranteed.

28.92± ACRES

CRENSHAW COUNTY, ALABAMA



SMALLTOWN
HUNTING PROPERTIES
& REAL ESTATESM

TRACY FLOWERS

LAND SPECIALIST

C: 334-303-2191

O: 334-931-0090

tracy@smalltownproperties.com

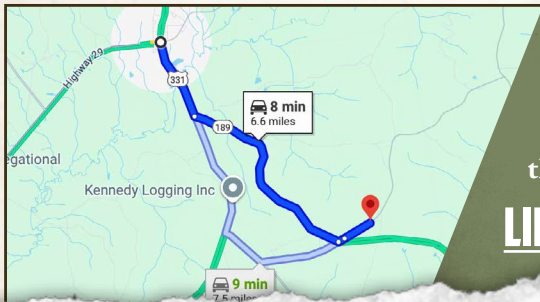
2121 5th Street, Ste 206 - Meridian, MS 39301

smalltownproperties.com

Information is believed to be accurate but not guaranteed.

28.92± ACRES CRENSHAW COUNTY, ALABAMA

land id. LINK



Directions From Brantley, AL:
Travel 1.6 miles south on US-331/S
Main Street. Turn left on AL-189 and
proceed 4.3 miles. Turn left on Old 3
Notch Road and continue 0.7 miles to
the destination.

[LINK TO GOOGLE MAP DIRECTIONS](#)



SMALLTOWN
HUNTING PROPERTIES
& REAL ESTATESM

TRACY FLOWERS

LAND SPECIALIST

C: 334-303-2191

O: 334-931-0090

tracy@smalltownproperties.com

2121 5th Street, Ste 206 - Meridian, MS 39301

smalltownproperties.com

Information is believed to be accurate but not guaranteed.