

73± ACRES
SMITH COUNTY, MS
\$259,150



SMALLTOWN

HUNTING PROPERTIES
& REAL ESTATESM

OFFICE (769) 760-0005

THE SMITH 73

PROPERTY PROFILE

LOCATION:

- Sun Road Raleigh, MS 39153
- Smith County, MS
- Minutes to Marathon Lake
- 15± Miles S of Forest

COORDINATES:

- 32.2114525, -89.3577214

PROPERTY USE:

- Timber
- Recreation
- Deer & Turkey Hunting

PROPERTY INFORMATION:

- 73± Acres
- County Road Frontage
- Multiple Age Pine Timber
- Rolling Terrain
- Power Available
- Borders Bienville NF/Tallahala WMA

TAX INFORMATION:

- Parcel: Part of 162-03-000-002
- Taxes TBD



SMALLTOWN
HUNTING PROPERTIES
& REAL ESTATESM

DENNIS WEST

EAST MISSISSIPPI MANAGING BROKER

ALABAMA QUALIFYING BROKER

LOUISIANA ASSOCIATE BROKER

C: 601-248-4396 | O: 769-760-0005

dennis@smalltownproperties.com

2121 5th St., Ste 206 - Meridian, MS 39301

smalltownproperties.com

WELCOME TO THE SMITH 73

THIS 73± ACRE TRACT IN SMITH COUNTY, MS, OFFERS A RARE OPPORTUNITY FOR RECREATIONAL BUYERS AND INVESTORS ALIKE. The property features rolling terrain with mixed-aged pine timber, providing both immediate and future timber value. Wildlife is abundant—whitetail deer and eastern turkey thrive here, making it an excellent hunting property. With multiple potential cabin/camp sites, you can build the perfect retreat for family weekends or hunting season. The tract fronts the Bienville National Forest and Tallahala Wildlife Management Area, giving you direct access to thousands of additional acres for recreation. Marathon Lake is just minutes away, offering fishing, camping, and outdoor enjoyment right at your fingertips.

Easily accessible with ample road frontage, this property combines seclusion with convenience. Whether you're looking for a hunting getaway, timber investment, or a place to put down roots, this Smith County tract has it all.

Contact Dennis West today to schedule a personal tour!



SMALLTOWN
HUNTING PROPERTIES
& REAL ESTATESM

DENNIS WEST

EAST MISSISSIPPI MANAGING BROKER

ALABAMA QUALIFYING BROKER

LOUISIANA ASSOCIATE BROKER

C: 601-248-4396 | O: 769-760-0005

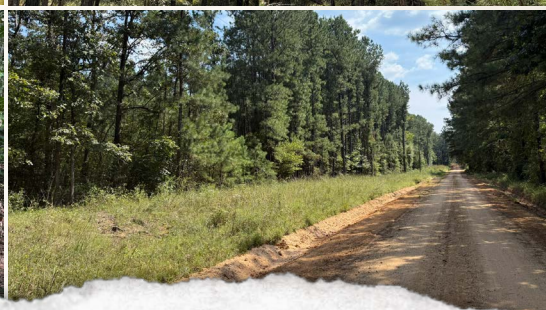
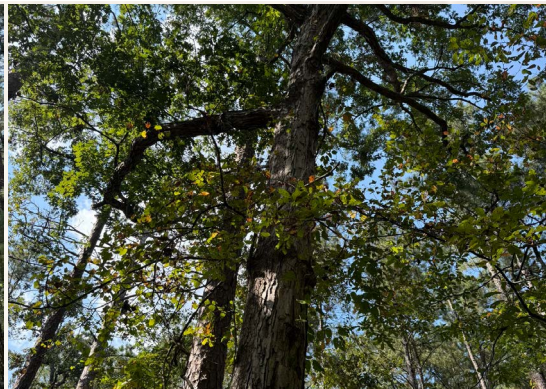
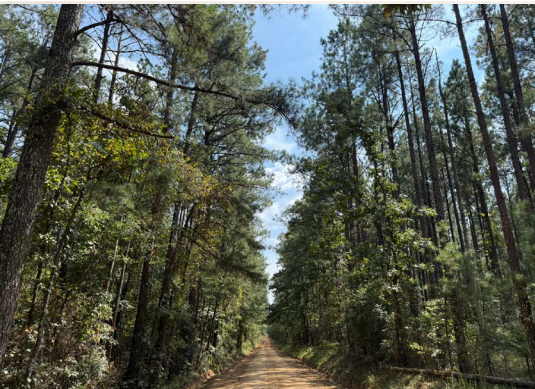
dennis@smalltownproperties.com

2121 5th St., Ste 206 - Meridian, MS 39301

smalltownproperties.com

73± ACRES

SMITH COUNTY, MISSISSIPPI



SMALLTOWN
HUNTING PROPERTIES
& REAL ESTATESM

DENNIS WEST

EAST MISSISSIPPI MANAGING BROKER

ALABAMA QUALIFYING BROKER

LOUISIANA ASSOCIATE BROKER

C: 601-248-4396 | O: 769-760-0005

dennis@smalltownproperties.com

2121 5th St., Ste 206 - Meridian, MS 39301

smalltownproperties.com

Information is believed to be accurate but not guaranteed.

73± ACRES

SMITH COUNTY, MISSISSIPPI



SMALLTOWN
HUNTING PROPERTIES
& REAL ESTATESM

DENNIS WEST

EAST MISSISSIPPI MANAGING BROKER

ALABAMA QUALIFYING BROKER

LOUISIANA ASSOCIATE BROKER

C: 601-248-4396 | O: 769-760-0005

dennis@smalltownproperties.com

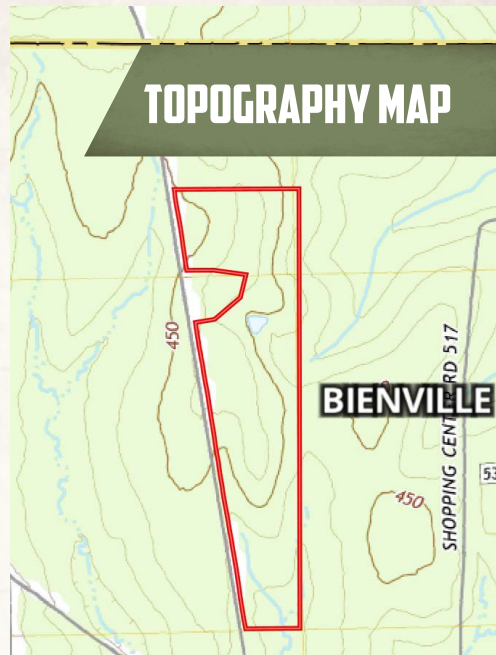
2121 5th St., Ste 206 - Meridian, MS 39301

smalltownproperties.com

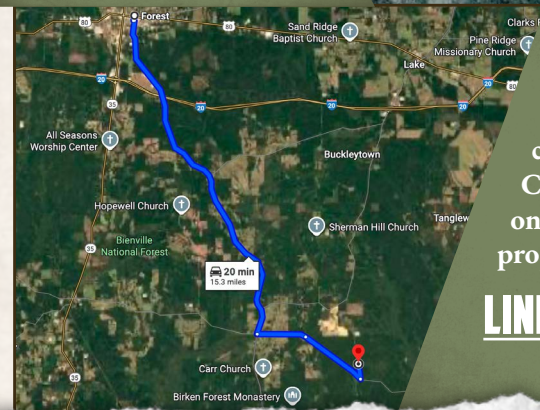
Information is believed to be accurate but not guaranteed.

73± ACRES

SMITH COUNTY, MISSISSIPPI



land id. LINK



Directions from Forest, MS: Travel 11.1 miles south on Hwy 501. Turn left on Morton Marathon Road and continue 1.5 miles. Continue on Smith County Road 506 for 2.1 miles. Turn left on Sun Road and proceed 0.5 miles to the property on the right.

[LINK TO GOOGLE MAP DIRECTIONS](#)



SMALLTOWN
HUNTING PROPERTIES
& REAL ESTATESM

DENNIS WEST

EAST MISSISSIPPI MANAGING BROKER

ALABAMA QUALIFYING BROKER

LOUISIANA ASSOCIATE BROKER

C: 601-248-4396 | O: 769-760-0005

dennis@smalltownproperties.com

2121 5th St., Ste 206 - Meridian, MS 39301

smalltownproperties.com



Information is believed to be accurate but not guaranteed.