



**SMALLTOWN**  
HUNTING PROPERTIES  
& REAL ESTATE <sup>SM</sup>

**TRACT #2 AT HWY 375 WEST  
MENA | POLK COUNTY, AR**  
**3.46± ACRES | \$70,000**



OFFICE (479) 588-1034 | [WWW.SMALLTOWNPROPERTIES.COM](http://WWW.SMALLTOWNPROPERTIES.COM)

# TRACT #2 AT HWY 375 WEST

## PROPERTY PROFILE

### LOCATION:

- Hwy 375 West  
Mena, AR 71953
- Polk County
- Borders the Mena City  
Limits to the East
- 2.6± Miles W of Downtown Mena
- 3.8± Miles SW of the Trails at Mena  
Mountain Bike Trailhead
- 10.5± Miles NW of the West  
Trailhead Wolf Pen Gap ATV Trails
- 60± Miles NE of Hochatown, OK
- 84± Miles S of Fort Smith

### COORDINATES:

- 34.57131, -94.2683

### TAX INFORMATION:

- TBD

### PROPERTY USE:

- Potential Home Site
- Homestead
- Potential Subdivision
- Potential Commercial Site

### PROPERTY INFORMATION:

- 3.46± Acres
- Partially Fenced
- Utilities Easily Accessed
- Frontage on Hwy 375  
and Milhal Lane
- Improved Pasture
- 360-Degree Mountain Views
- Additional Acreage Available



**SMALLTOWN**  
HUNTING PROPERTIES  
& REAL ESTATE<sup>SM</sup>

**LUKE ALSTON, ALC**

EXECUTIVE BROKER

C: 479-234-1376

O: 479-588-1034

[lukealston@smalltownproperties.com](mailto:lukealston@smalltownproperties.com)

5607 Highway 71 South - Cove, AR 71937

[smalltownproperties.com](http://smalltownproperties.com)

Information is believed to be accurate but not guaranteed.

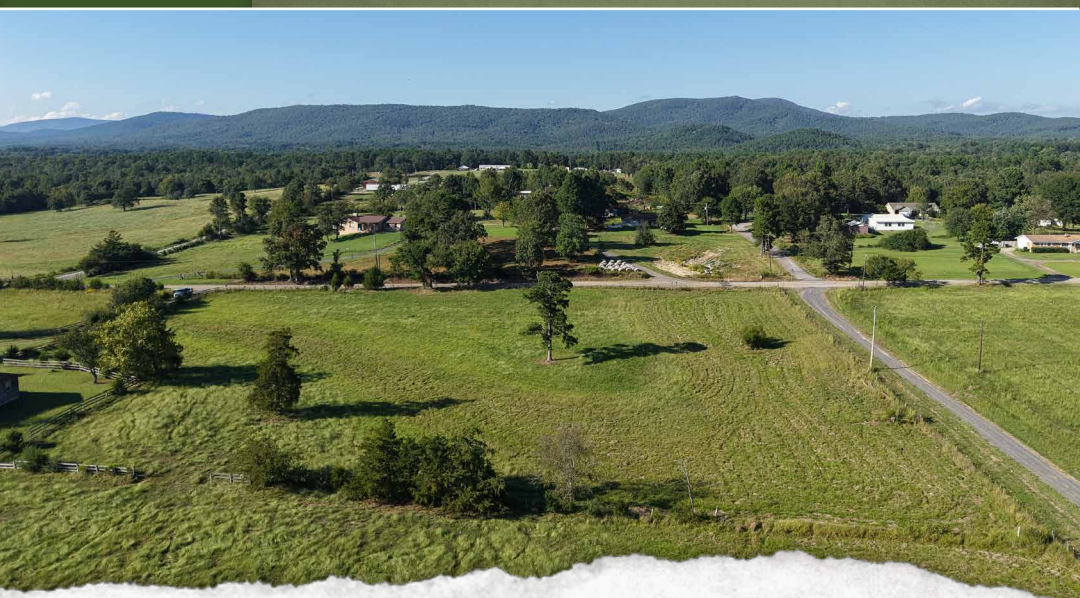


# WELCOME TO TRACT #2 AT HWY 375 WEST

**WELCOME TO A BLANK SLATE LOCATED ON HWY 375 WEST, NEAR MENA, ARKANSAS.** This 3.46± acre partially fenced property is in a great location and ideal for several purposes: a residential site for building your dream home with acreage to have a micro farm or large lawn, a commercial site for your business, or a site for a subdivision or multi-unit rental properties. With highway frontage and Milhal Lane on the north and east sides, you can have unencumbered access.

The best feature of this Polk County tract is the mountain views—just what this area is known for in every direction. This property is the larger of two other available tracts. Wrap them all in one package for elbow room to have your homestead or small livestock farm. The exact acreage is to be determined by survey. *Additional acreage is available, and the exact acreage is determined by a survey.*

**Contact Luke Alston today to learn more and schedule a personal tour.**



**SMALLTOWN**  
HUNTING PROPERTIES  
& REAL ESTATE<sup>SM</sup>

**LUKE ALSTON, ALC**

EXECUTIVE BROKER

C: 479-234-1376

O: 479-588-1034

[lukealston@smalltownproperties.com](mailto:lukealston@smalltownproperties.com)

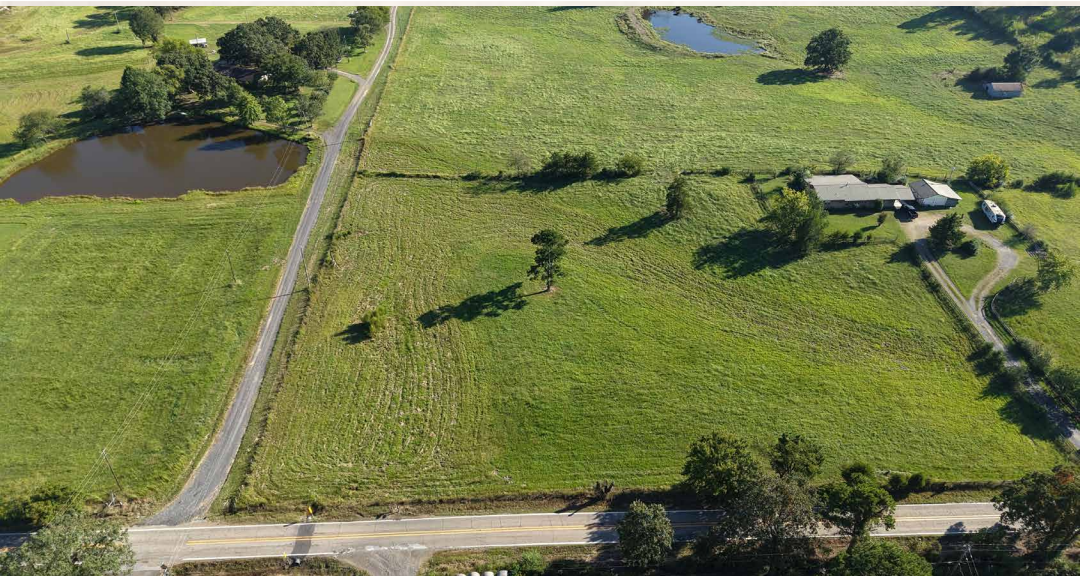
5607 Highway 71 South - Cove, AR 71937

[smalltownproperties.com](http://smalltownproperties.com)

Information is believed to be accurate but not guaranteed.



**3.46± ACRES | TRACT #2 AT HWY 375 WEST | MENA | POLK COUNTY, ARKANSAS**



**SMALLTOWN**  
HUNTING PROPERTIES  
& REAL ESTATE<sup>SM</sup>

**LUKE ALSTON, ALC**

EXECUTIVE BROKER

C: 479-234-1376

O: 479-588-1034

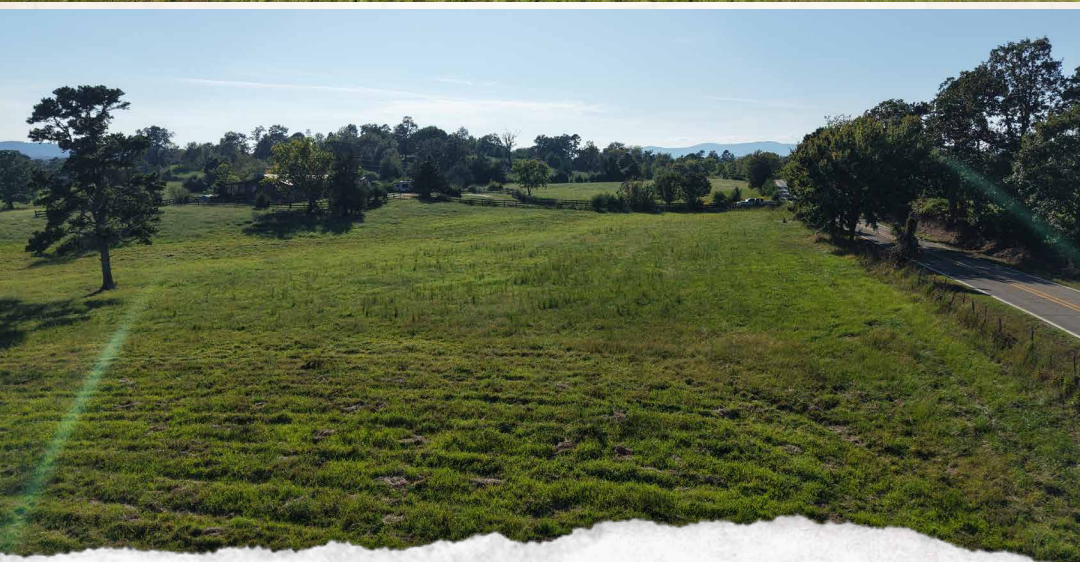
[lukealston@smalltownproperties.com](mailto:lukealston@smalltownproperties.com)

5607 Highway 71 South - Cove, AR 71937

[smalltownproperties.com](http://smalltownproperties.com)

Information is believed to be accurate but not guaranteed.





**SMALLTOWN**  
HUNTING PROPERTIES  
& REAL ESTATE<sup>SM</sup>

**LUKE ALSTON, ALC**

EXECUTIVE BROKER

C: 479-234-1376

O: 479-588-1034

[lukealston@smalltownproperties.com](mailto:lukealston@smalltownproperties.com)

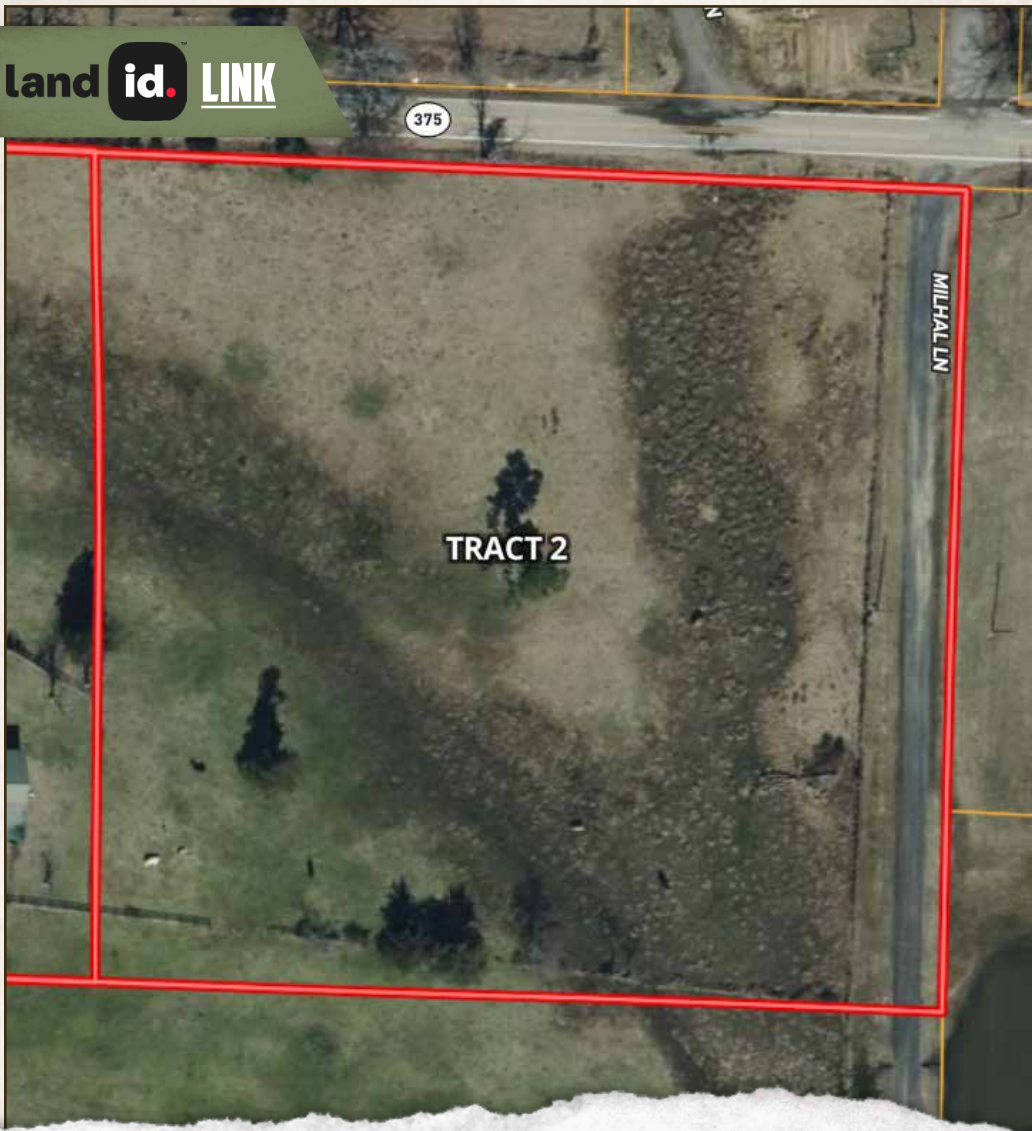
5607 Highway 71 South - Cove, AR 71937

[smalltownproperties.com](http://smalltownproperties.com)

Information is believed to be accurate but not guaranteed.

3.46± ACRES | TRACT #2 AT HWY 375 WEST | MENA | POLK COUNTY, ARKANSAS

land id. LINK



**SMALLTOWN**  
HUNTING PROPERTIES  
& REAL ESTATE<sup>SM</sup>

**LUKE ALSTON, ALC**

EXECUTIVE BROKER

C: 479-234-1376

O: 479-588-1034

[lukealston@smalltownproperties.com](mailto:lukealston@smalltownproperties.com)

5607 Highway 71 South - Cove, AR 71937

[smalltownproperties.com](http://smalltownproperties.com)

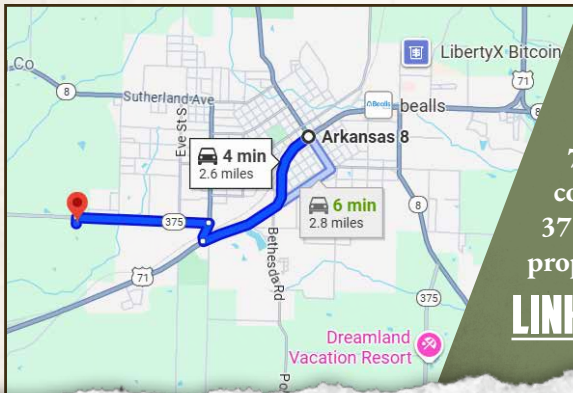
Information is believed to be accurate but not guaranteed.



**3.46± ACRES | TRACT #2 AT HWY 375 WEST | MENA | POLK COUNTY, ARKANSAS**



Property Lines are Approximate



Directions From the Intersection of Mena Street and Hwy 71 in Mena, AR: Travel 1.3 miles south on Hwy 71. Turn right on Reine Street and continue 0.2 miles. Turn left on Hwy 375 West and proceed 1.1 miles to the property on the left.

**LINK TO GOOGLE MAP DIRECTIONS**



**SMALLTOWN**  
HUNTING PROPERTIES  
& REAL ESTATE<sup>SM</sup>

**LUKE ALSTON, ALC**

EXECUTIVE BROKER

C: 479-234-1376

O: 479-588-1034

[lukealston@smalltownproperties.com](mailto:lukealston@smalltownproperties.com)

5607 Highway 71 South - Cove, AR 71937

[smalltownproperties.com](http://smalltownproperties.com)

Information is believed to be accurate but not guaranteed.