



SMALLTOWN

HUNTING PROPERTIES
& REAL ESTATESM

70± ACRES
OHIO COUNTY, KY
\$192,500

OFFICE (270) 795-1080 | WWW.SMALLTOWNPROPERTIES.COM

THE OHIO 70

PROPERTY PROFILE

LOCATION:

- Carter Ferry Road
Centertown, KY 42328
- Ohio County
- Near the Rough River Bottoms
- 9.3± Miles W of Hartford
- 32.8± Miles SE of Owensboro
- 51.8± Miles NW
of Bowling Green
- 79.2± Miles SW of Elizabethtown
- 113± Miles SW of Louisville
- 119± Miles N of Nashville, TN

TAX INFORMATION:

- ID 100-24-11
- Deed Book/Page 464/522
- 2024 Taxes \$ 161.70

COORDINATES:

- 37.4397, -87.0021

PROPERTY USE:

- Recreational
- Hunting
- Potential Cabin Sites

PROPERTY INFORMATION:

- 70± Acres
- Hardwoods
- Water
- Established Trail System
- Surrounded by Cropland
- Additional Acreage Available



SMALLTOWN
HUNTING PROPERTIES
& REAL ESTATESM

JAMIE ROGERS

PRINCIPAL BROKER | PRINCIPAL AUCTIONEER

C: 270-791-4142

O: 270-795-1080

jamie@smalltownproperties.com

2101 Flint Springs Rd. - Cromwell, KY 42333

smalltownproperties.com

Information is believed to be accurate but not guaranteed.

WELCOME TO THE OHIO 70

WELCOME TO AN AFFORDABLE RECREATIONAL PROPERTY IN OHIO COUNTY, KENTUCKY! This area consistently produces top-end whitetails and boasts a great turkey population. Situated off Carter Ferry Road in Centertown, just over nine miles west of Hartford, this 70± acre diverse tract offers a fantastic layout, making it hunt like a much larger property. An established trail system provides entry from any wind direction. You will find hardwoods and water, in addition to two spots for a camp or cabin. The property is located within one mile of the Rough River bottoms and is surrounded by hundreds of acres of high-production cropland. If you are looking for larger acreage, a 63± acre and 90± acre tract are also available for purchase.

**Contact Jamie Rogers today to learn more
and schedule a private tour!**



SMALLTOWN
HUNTING PROPERTIES
& REAL ESTATESM

JAMIE ROGERS

PRINCIPAL BROKER | PRINCIPAL AUCTIONEER

C: 270-791-4142

O: 270-795-1080

jamie@smalltownproperties.com

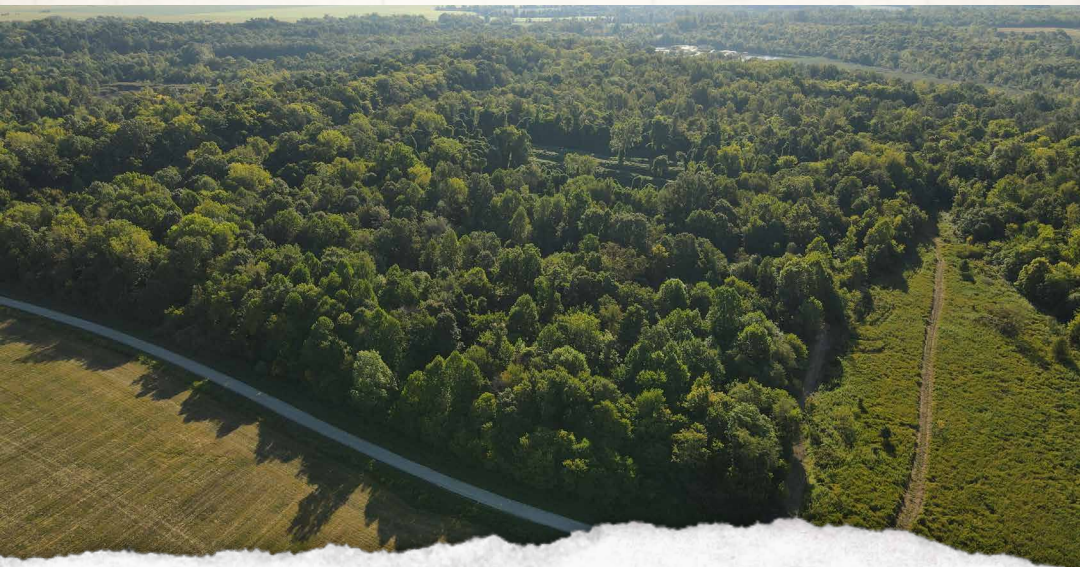
2101 Flint Springs Rd. - Cromwell, KY 42333

smalltownproperties.com

Information is believed to be accurate but not guaranteed.

70± ACRES

OHIO COUNTY, KENTUCKY



SMALLTOWN
HUNTING PROPERTIES
& REAL ESTATESM

JAMIE ROGERS

PRINCIPAL BROKER | PRINCIPAL AUCTIONEER

C: 270-791-4142

O: 270-795-1080

jamie@smalltownproperties.com

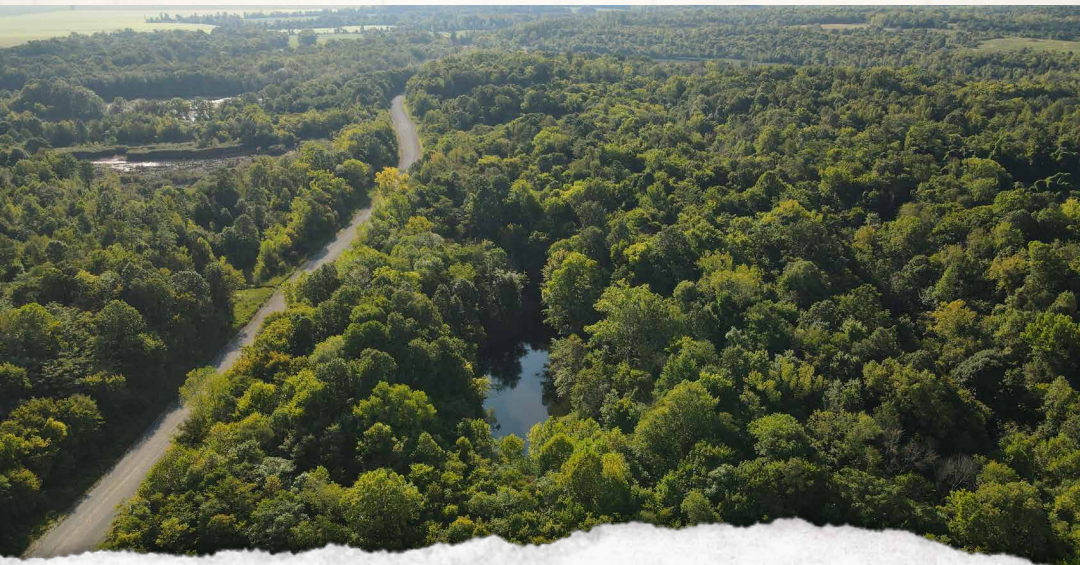
2101 Flint Springs Rd. - Cromwell, KY 42333

smalltownproperties.com

Information is believed to be accurate but not guaranteed.

70± ACRES

OHIO COUNTY, KENTUCKY



SMALLTOWN
HUNTING PROPERTIES
& REAL ESTATESM

JAMIE ROGERS

PRINCIPAL BROKER | PRINCIPAL AUCTIONEER

C: 270-791-4142

O: 270-795-1080

jamie@smalltownproperties.com

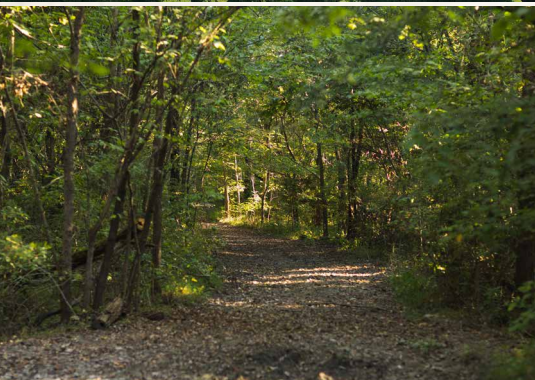
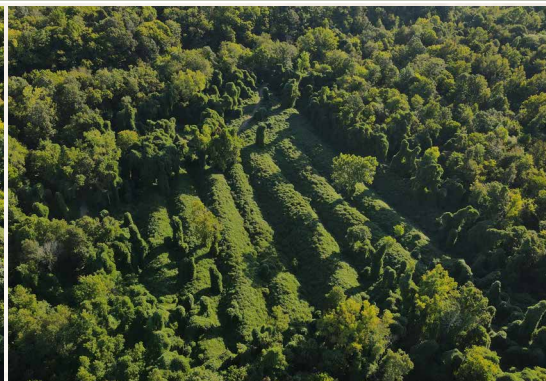
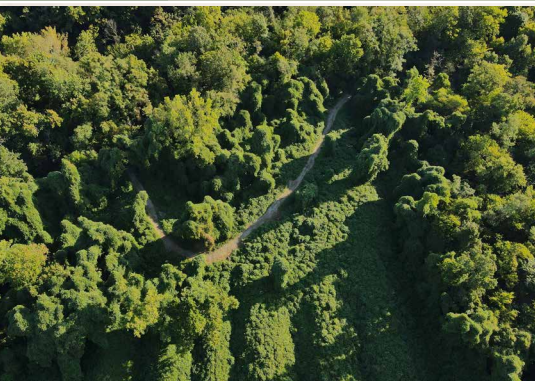
2101 Flint Springs Rd. - Cromwell, KY 42333

smalltownproperties.com

Information is believed to be accurate but not guaranteed.

70± ACRES

OHIO COUNTY, KENTUCKY



SMALLTOWN
HUNTING PROPERTIES
& REAL ESTATESM

JAMIE ROGERS

PRINCIPAL BROKER | PRINCIPAL AUCTIONEER

C: 270-791-4142

O: 270-795-1080

jamie@smalltownproperties.com

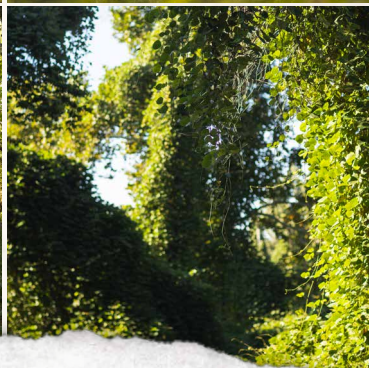
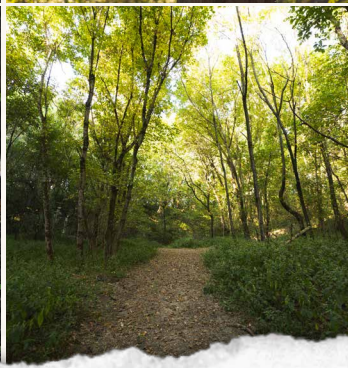
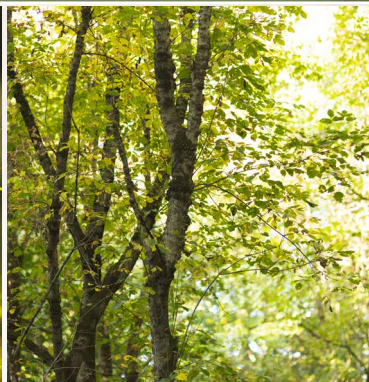
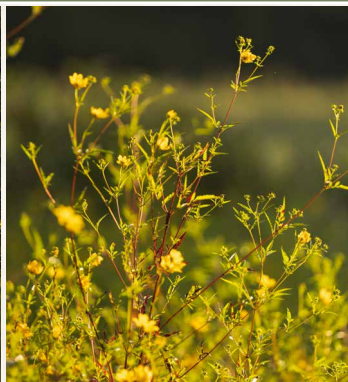
2101 Flint Springs Rd. - Cromwell, KY 42333

smalltownproperties.com

Information is believed to be accurate but not guaranteed.

70± ACRES

OHIO COUNTY, KENTUCKY



SMALLTOWN
HUNTING PROPERTIES
& REAL ESTATESM

JAMIE ROGERS

PRINCIPAL BROKER | PRINCIPAL AUCTIONEER

C: 270-791-4142

O: 270-795-1080

jamie@smalltownproperties.com

2101 Flint Springs Rd. - Cromwell, KY 42333

smalltownproperties.com

Information is believed to be accurate but not guaranteed.

70± ACRES

OHIO COUNTY, KENTUCKY



SMALLTOWN
HUNTING PROPERTIES
& REAL ESTATESM

JAMIE ROGERS

PRINCIPAL BROKER | PRINCIPAL AUCTIONEER

C: 270-791-4142

O: 270-795-1080

jamie@smalltownproperties.com

2101 Flint Springs Rd. - Cromwell, KY 42333

smalltownproperties.com

Information is believed to be accurate but not guaranteed.

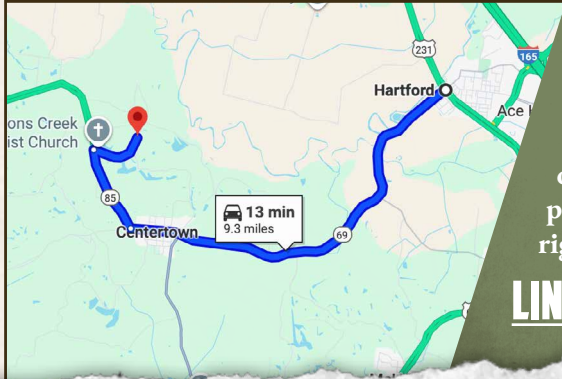
70± ACRES

OHIO COUNTY, KENTUCKY

land id. **LINK**

37.4397,-87.0021

CARTER FERRY RD



Directions From Hartford, KY:
Travel 6.6 miles southwest on Hwy 69 to Centertown. Turn right on Hwy 85 and continue 1.5 miles. Turn right on Carter Ferry Road/CR 1311 and proceed 0.9 miles to the property on the right.

LINK TO GOOGLE MAP DIRECTIONS



SMALLTOWN
HUNTING PROPERTIES
& REAL ESTATESM

JAMIE ROGERS

PRINCIPAL BROKER | PRINCIPAL AUCTIONEER

C: 270-791-4142

O: 270-795-1080

jamie@smalltownproperties.com

2101 Flint Springs Rd. - Cromwell, KY 42333

smalltownproperties.com

Information is believed to be accurate but not guaranteed.