



SMALLTOWN

HUNTING PROPERTIES
& REAL ESTATESM

63± ACRES
OHIO COUNTY, KY
\$173,500

OFFICE (270) 795-1080 | WWW.SMALLTOWNPROPERTIES.COM

THE OHIO 63

PROPERTY PROFILE

LOCATION:

- Stroud Lane
Centertown, KY 42328
- Ohio County
- 10± Miles W of Hartford
- 32.8± Miles SE of Owensboro
- 52.5± Miles NW
of Bowling Green
- 79.8± Miles SW of Elizabethtown
- 114± Miles SW of Louisville
- 120± Miles N of Nashville, TN

COORDINATES:

- 37.4464, -86.9963

TAX INFORMATION:

- D 100-24-13
- Deed Book/Page 464/522
- 2024 Taxes \$ 127.56

PROPERTY USE:

- Hunting
- Recreational
- Potential Campsites
- Investment

PROPERTY INFORMATION:

- 63± Acres
- Hardwoods
- Open Ground
- Small Wetlands Area
- Frontage on 3 Roads
- Electricity Nearby
- Whitetails, Turkey, Quail,
Ducks & Other Small Game
- Additional Acreage Available



SMALLTOWN
HUNTING PROPERTIES
& REAL ESTATESM

JAMIE ROGERS

PRINCIPAL BROKER | PRINCIPAL AUCTIONEER

C: 270-791-4142

O: 270-795-1080

jamie@smalltownproperties.com

2101 Flint Springs Rd. - Cromwell, KY 42333

smalltownproperties.com

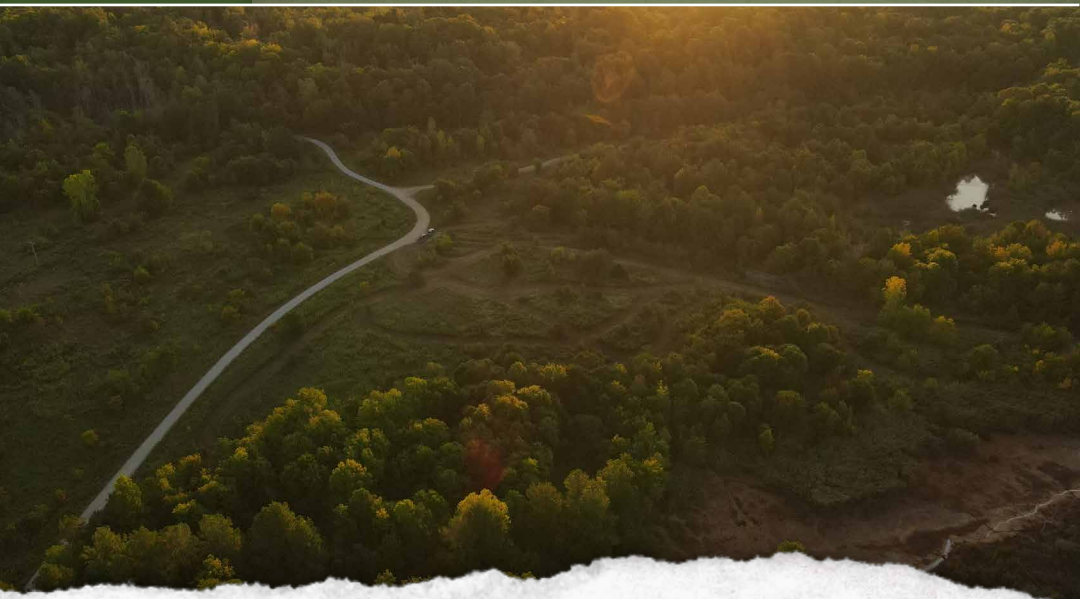
Information is believed to be accurate but not guaranteed.

WELCOME TO THE OHIO 63

WELCOME TO A 63± ACRE RECREATIONAL HUNTING PROPERTY IN OHIO COUNTY, KENTUCKY. Situated approximately 10 miles west of Hartford, this property offers a very diverse habitat for its size and outstanding potential. You will find open ground, ideal for multiple food plots, hardwoods, frontage on three roads, bedding cover and a small wetlands area. The acreage has 360-degree access, allowing for hunting in any wind direction. This area is known for producing top-notch whitetails, in addition to having a nice turkey population, as well as quail, ducks, and other small game. There are multiple camping spots with electricity available close by.

Nearby cropland and neighbors who manage for quality whitetails make this farm an excellent opportunity at an affordable price. Additional acreage is available.

To schedule a personal tour, contact Jamie Rogers today and experience #TheSmallTownWay!



SMALLTOWN
HUNTING PROPERTIES
& REAL ESTATESM

JAMIE ROGERS

PRINCIPAL BROKER | PRINCIPAL AUCTIONEER

C: 270-791-4142

O: 270-795-1080

jamie@smalltownproperties.com

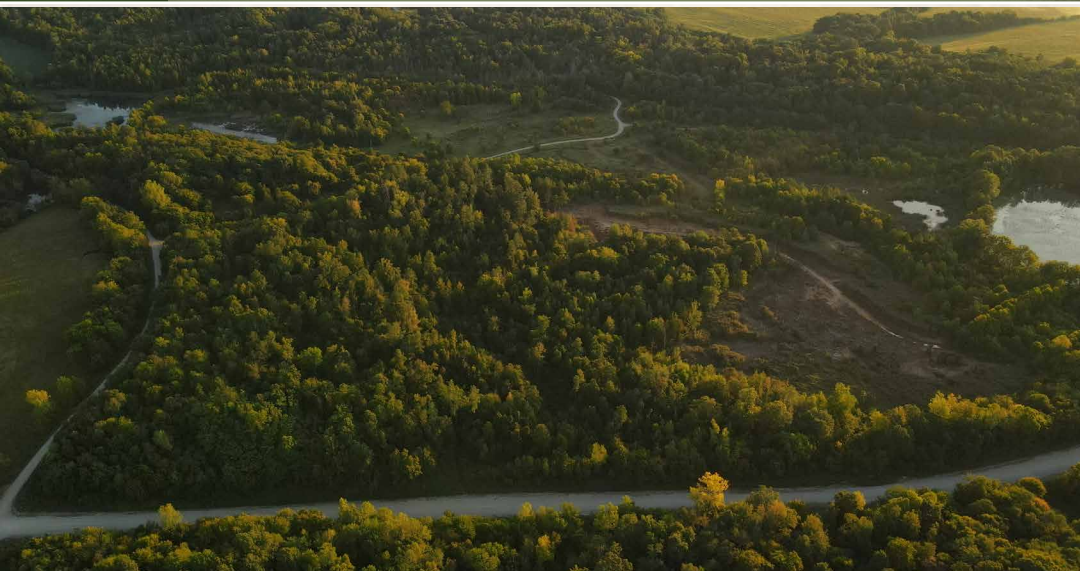
2101 Flint Springs Rd. - Cromwell, KY 42333

smalltownproperties.com

Information is believed to be accurate but not guaranteed.

63± ACRES

OHIO COUNTY, KENTUCKY



SMALLTOWN
HUNTING PROPERTIES
& REAL ESTATESM

JAMIE ROGERS

PRINCIPAL BROKER | PRINCIPAL AUCTIONEER

C: 270-791-4142

O: 270-795-1080

jamie@smalltownproperties.com

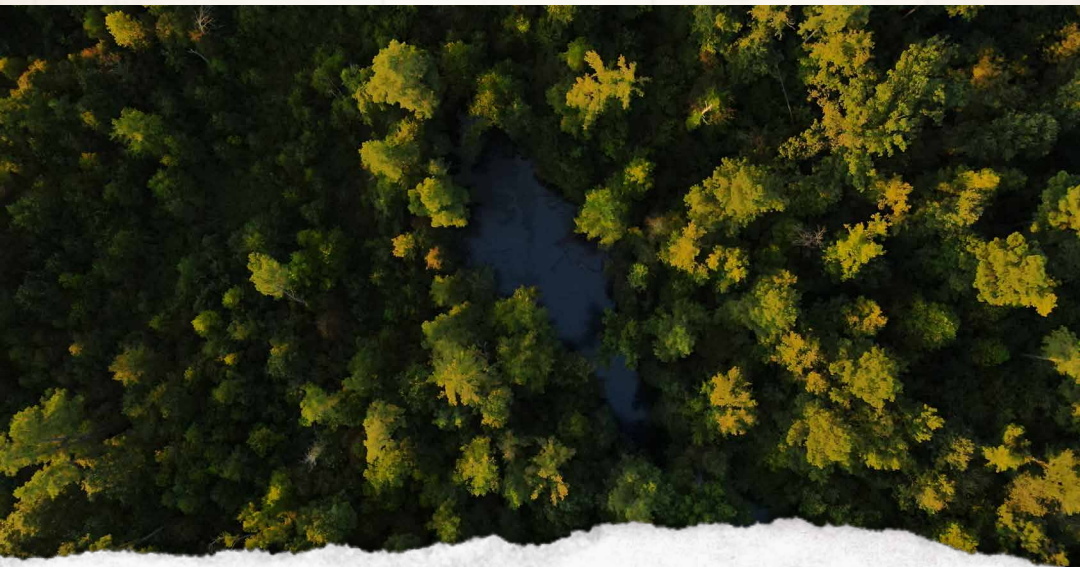
2101 Flint Springs Rd. - Cromwell, KY 42333

smalltownproperties.com

Information is believed to be accurate but not guaranteed.

63± ACRES

OHIO COUNTY, KENTUCKY



SMALLTOWN
HUNTING PROPERTIES
& REAL ESTATESM

JAMIE ROGERS

PRINCIPAL BROKER | PRINCIPAL AUCTIONEER

C: 270-791-4142

O: 270-795-1080

jamie@smalltownproperties.com

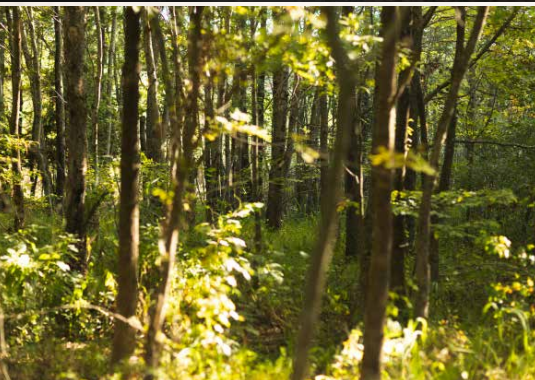
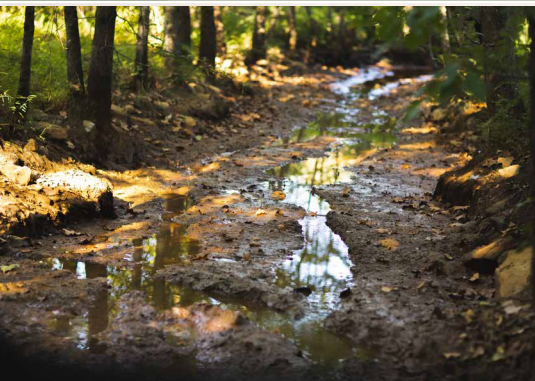
2101 Flint Springs Rd. - Cromwell, KY 42333

smalltownproperties.com

Information is believed to be accurate but not guaranteed.

63± ACRES

OHIO COUNTY, KENTUCKY



SMALLTOWN
HUNTING PROPERTIES
& REAL ESTATESM

JAMIE ROGERS

PRINCIPAL BROKER | PRINCIPAL AUCTIONEER

C: 270-791-4142

O: 270-795-1080

jamie@smalltownproperties.com

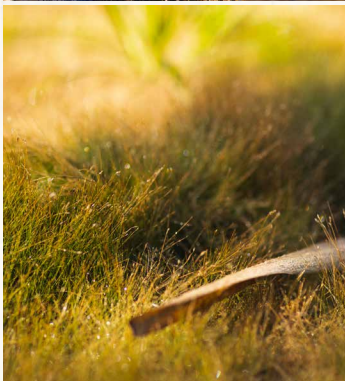
2101 Flint Springs Rd. - Cromwell, KY 42333

smalltownproperties.com

Information is believed to be accurate but not guaranteed.

63± ACRES

OHIO COUNTY, KENTUCKY



SMALLTOWN
HUNTING PROPERTIES
& REAL ESTATESM

JAMIE ROGERS

PRINCIPAL BROKER | PRINCIPAL AUCTIONEER

C: 270-791-4142

O: 270-795-1080

jamie@smalltownproperties.com

2101 Flint Springs Rd. - Cromwell, KY 42333

smalltownproperties.com

Information is believed to be accurate but not guaranteed.

63± ACRES

OHIO COUNTY, KENTUCKY



SMALLTOWN
HUNTING PROPERTIES
& REAL ESTATESM

JAMIE ROGERS

PRINCIPAL BROKER | PRINCIPAL AUCTIONEER

C: 270-791-4142

O: 270-795-1080

jamie@smalltownproperties.com

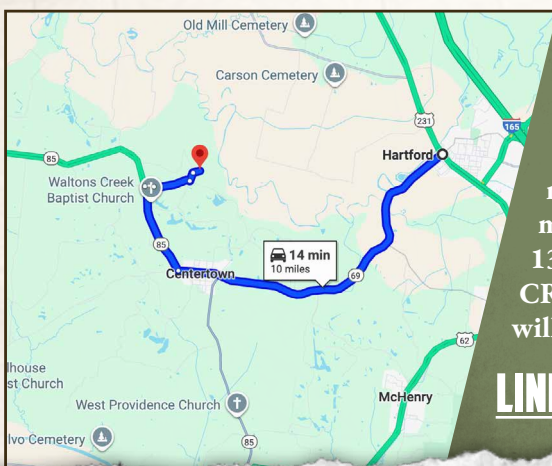
2101 Flint Springs Rd. - Cromwell, KY 42333

smalltownproperties.com

Information is believed to be accurate but not guaranteed.

63± ACRES

OHIO COUNTY, KENTUCKY



Directions From Hartford, KY:
Travel 6.9 miles southwest on Hwy 69. Stay right as the road becomes Hwy 85 and continue 1.8 miles. Turn right on Peabody Haul Road and proceed 0.2 miles, continue on Gordon Road for 0.7 miles. Turn left on Carter Ferry Road/CR 1311 and travel 0.2 miles. Turn right on CR 1350/Stroud Lane and the destination will be on the right.

[LINK TO GOOGLE MAP DIRECTIONS](#)



SMALLTOWN
HUNTING PROPERTIES
& REAL ESTATESM

JAMIE ROGERS

PRINCIPAL BROKER | PRINCIPAL AUCTIONEER

C: 270-791-4142

O: 270-795-1080

jamie@smalltownproperties.com

2101 Flint Springs Rd. - Cromwell, KY 42333

smalltownproperties.com

Information is believed to be accurate but not guaranteed.