

**58± ACRES**  
**GREENVILLE | BUTLER COUNTY, AL**  
**\$284,200**

**COMMERCIAL OPPORTUNITY**



**SMALLTOWN**  
HUNTING PROPERTIES  
& REAL ESTATE

**OFFICE (334) 931-0090 | [WWW.SMALLTOWNPROPERTIES.COM](http://WWW.SMALLTOWNPROPERTIES.COM)**



# THE BUTLER 58

## PROPERTY PROFILE

### LOCATION:

- N Conecuh Street  
Greenville, AL 36037
- Butler County
- 0.8± Miles N of Greenville
- 2± Miles E of I-65
- 25± Miles NW of Luverne
- 44± Miles S of Montgomery

### PROPERTY USE:

- Commercial
- Industrial

### COORDINATES:

- 31.84, -86.617

### PROPERTY INFORMATION:

- 58± Acres
- Highway Frontage
- City Utilities Available

### TAX INFORMATION:

- Parcel#  
08 06 14 10 0-00029 000
- Taxes 2024 \$164.05



**SMALLTOWN**  
HUNTING PROPERTIES  
& REAL ESTATE<sup>SM</sup>

**TRACY FLOWERS**

LAND SPECIALIST

C: 334-303-2191

O: 334-931-0090

[tracy@smalltownproperties.com](mailto:tracy@smalltownproperties.com)

2121 5th Street, Ste 206 - Meridian, MS 39301

[smalltownproperties.com](http://smalltownproperties.com)

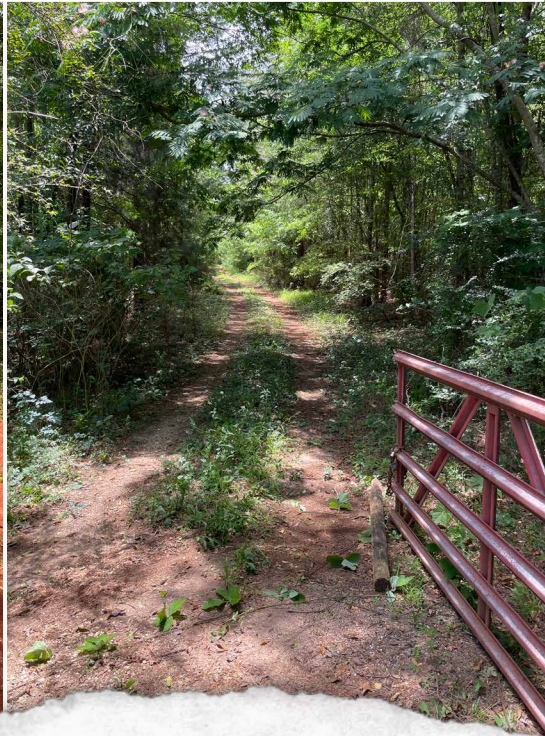
Information is believed to be accurate but not guaranteed.



# WELCOME TO THE BUTLER 58

**WELCOME TO A RARE FIND IN DOWNTOWN GREENVILLE, ALABAMA.** The 58± acre prime commercial Butler County property sits in a highly desirable location just two miles east of Interstate 65, offering excellent access for business, retail, or development opportunities. City utilities, including water, sewer, electricity, and gas, are available, making the property ready for a wide range of uses. With its size, location, and accessibility, this property provides endless potential for growth and investment in a thriving community.

**Contact Tracy Flowers today and secure one of Greenville's largest commercial tracts!**



**SMALLTOWN**  
HUNTING PROPERTIES  
& REAL ESTATE<sup>SM</sup>

**TRACY FLOWERS**

LAND SPECIALIST

C: 334-303-2191

O: 334-931-0090

[tracy@smalltownproperties.com](mailto:tracy@smalltownproperties.com)

2121 5th Street, Ste 206 - Meridian, MS 39301

[smalltownproperties.com](http://smalltownproperties.com)

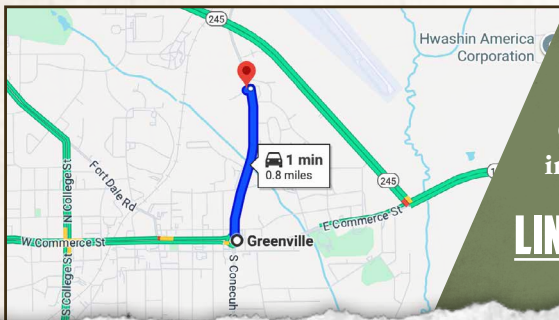
Information is believed to be accurate but not guaranteed.



58± ACRES

GREENVILLE

BUTLER COUNTY, ALABAMA



Directions From Greenville, AL:  
Travel 0.7 miles north on Butler  
County 45/N Conecuh Street. Turn left  
into the property.

[LINK TO GOOGLE MAP DIRECTIONS](#)



**SMALLTOWN**  
HUNTING PROPERTIES  
& REAL ESTATE<sup>SM</sup>

**TRACY FLOWERS**

LAND SPECIALIST

C: 334-303-2191

O: 334-931-0090

[tracy@smalltownproperties.com](mailto:tracy@smalltownproperties.com)

2121 5th Street, Ste 206 - Meridian, MS 39301

[smalltownproperties.com](http://smalltownproperties.com)

Information is believed to be accurate but not guaranteed.