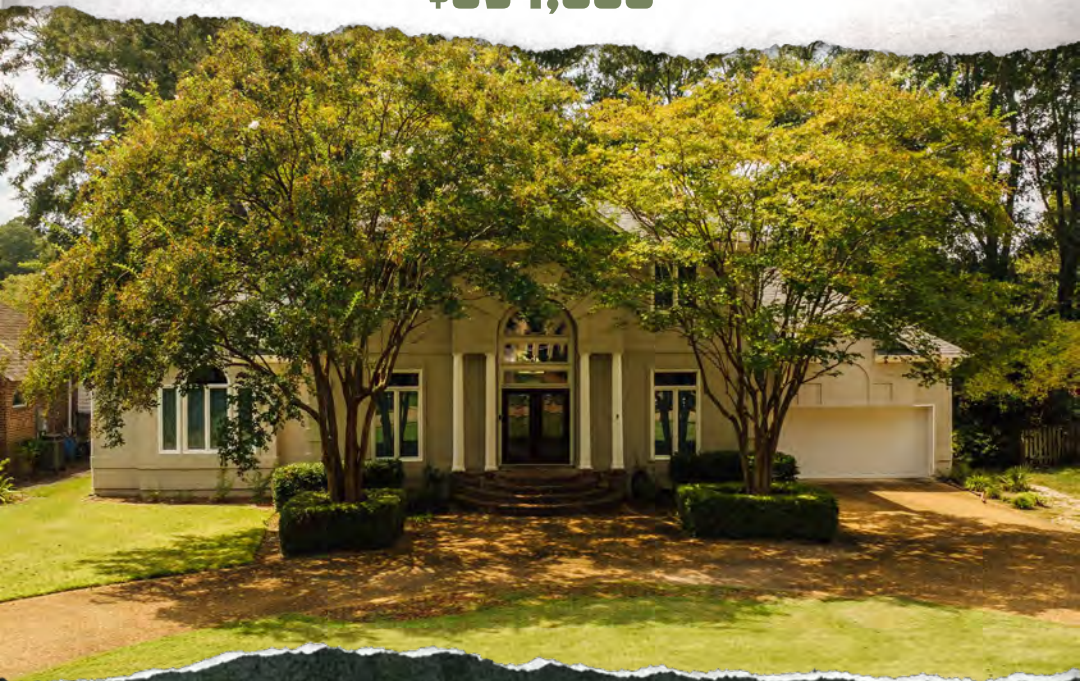




# SMALLTOWN

HUNTING PROPERTIES  
& REAL ESTATE<sup>SM</sup>

**336 LONG COVE DRIVE**  
**MADISON COUNTY, MS**  
**\$694,000**



OFFICE (769) 888-2522 | [WWW.SMALLTOWNPROPERTIES.COM](http://WWW.SMALLTOWNPROPERTIES.COM)

# 336 LONG COVE DRIVE

## PROPERTY PROFILE

### LOCATION:

- 336 Long Cove Drive  
Madison, MS 39110
- Northbay Subdivision
- Madison County
- 2.9± Miles E of  
Madison the City

### COORDINATES:

- 32.4527, -90.0743

### PROPERTY USE:

- Residential

### TAX INFORMATION:

- Parcel# 072E-15A-025-00-00
- 2024 Taxes : \$3,743.59
- 2024 Pear River Valley  
Lease Hold Fee: \$890

### PROPERTY INFORMATION:

- 3,470± SqFt Waterfront Home
- 4 Bedrooms/3.5 Baths
- Circular Driveway
- Excellent Curb Appeal
- Spacious Kitchen  
with Eat-In Area
- Stainless Steel Appliances
- Granite Countertops
- Formal Living  
& Dining Rooms
- Large Family Room
- Gas Fireplace
- Oversized Primary Suite  
with Sunroom
- Hardwood, Carpet,  
and Tile Floors Throughout
- Amazing Backyard
- Back Deck with Built-In Bench
- Neighborhood Boat Marina  
and Boat Ramp
- Tons of Green Space



**MICHAEL OSWALT, ALC** | PRINCIPAL BROKER  
C: 662-719-3967 | michael@smalltownproperties.com

**RACHEL BOYD** | RESIDENTIAL SPECIALIST  
C: 913-212-8419 | rachel@smalltownproperties.com

Information is believed to be accurate but not guaranteed.

4848 Main St. - Flora, MS 39071 | O: 769-888-2522 | smalltownproperties.com



# WELCOME TO 336 LONG COVE DRIVE

**WELCOME HOME TO A BEAUTIFUL WATERFRONT PROPERTY IN THE WELL- SOUGHT-AFTER NORTHBAY SUBDIVISION IN MADISON, MISSISSIPPI.** This elegant home offers 3,470± square feet of spacious living with four bedrooms, three full baths, and one half bath, perfectly situated on the Ross Barnett Reservoir.

From the moment you arrive, you will be impressed by the home's curb appeal, complete with a circular driveway and 20' ceilings in the foyer that create a grand and welcoming entrance. Inside, the layout offers both comfort and practicality. The formal living and dining rooms set the tone for entertaining, while the cozy family room features breathtaking views of the water and backyard, ideal for both relaxing and hosting family and friends.

The kitchen is a chef's dream, equipped with granite countertops, a gas cooktop, double ovens, and a large eat-in area. Imagine casual meals or morning coffee while enjoying the beautiful waterfront views. The luxurious primary suite is located on the main level and includes a bright and airy sunroom, a grand bathroom with double vanities, a sunken tub, a separate shower, and a walk-in closet.



**MICHAEL OSWALT, ALC** | PRINCIPAL BROKER  
C: 662-719-3967 | michael@smalltownproperties.com

**RACHEL BOYD** | RESIDENTIAL SPECIALIST  
C: 913-212-8419 | rachel@smalltownproperties.com

Information is believed to be accurate but not guaranteed.

4848 Main St. - Flora, MS 39071 | O: 769-888-2522 | smalltownproperties.com



# MORE ABOUT 336 LONG COVE DRIVE

Upstairs, you will find three generously sized bedrooms and two full bathrooms—one of which is a Jack and Jill, ideal for siblings and guests, while the other is a private stand-alone bathroom, offering added privacy.

Step outside to your private backyard oasis, which includes a deck overlooking the water, perfect for entertaining, relaxing, or enjoying stunning sunset views. The seawall is constructed of vinyl sheet piling, and the backyard features a sprinkler system that draws water directly from the reservoir.

Living in Northbay offers so much more than just a beautiful home. You will get to enjoy access to the Ross Barnett Reservoir for all your boating and fishing needs, as well as a neighborhood boat marina and boat ramp, Bayclub Clubhouse, two swimming pools, tennis courts, a park, a scenic walking trail, and tons of green space. Conveniently located near great restaurants, shopping, and medical facilities, Northbay truly combines entertainment with everyday convenience.

**If living on the water is your dream, contact  
Michael Oswalt or Rachel Boyd today to schedule  
a private tour of this exceptional waterfront home.**



**MICHAEL OSWALT, ALC** | PRINCIPAL BROKER  
C: 662-719-3967 | [michael@smalltownproperties.com](mailto:michael@smalltownproperties.com)

**RACHEL BOYD** | RESIDENTIAL SPECIALIST  
C: 913-212-8419 | [rachel@smalltownproperties.com](mailto:rachel@smalltownproperties.com)

Information is believed to be accurate but not guaranteed.



336 LONG COVE DRIVE

MADISON COUNTY, MISSISSIPPI



**MICHAEL OSWALT, ALC** | PRINCIPAL BROKER  
C: 662-719-3967 | [michael@smalltownproperties.com](mailto:michael@smalltownproperties.com)

**RACHEL BOYD** | RESIDENTIAL SPECIALIST  
C: 913-212-8419 | [rachel@smalltownproperties.com](mailto:rachel@smalltownproperties.com)

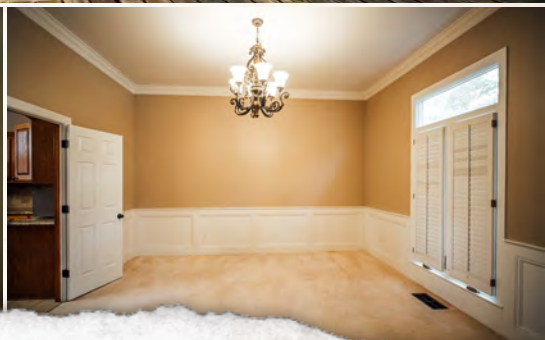
Information is believed to be accurate but not guaranteed.

4848 Main St. - Flora, MS 39071 | O: 769-888-2522 | [smalltownproperties.com](http://smalltownproperties.com)



336 LONG COVE DRIVE

MADISON COUNTY, MISSISSIPPI

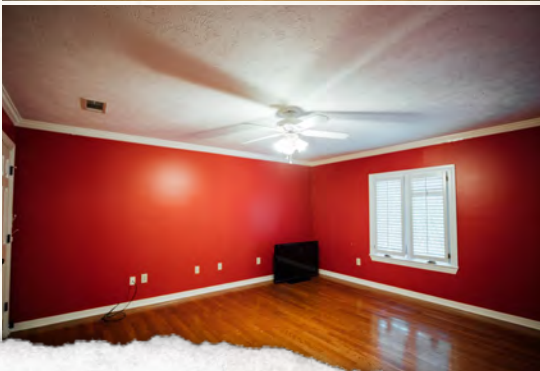
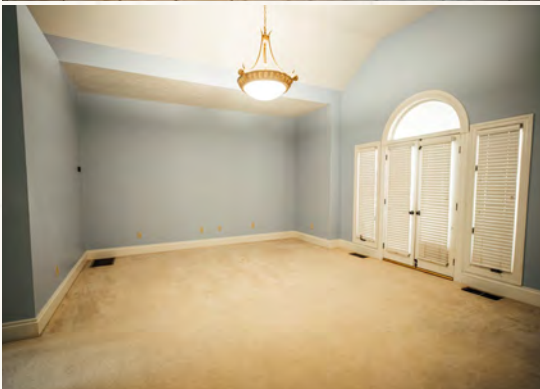
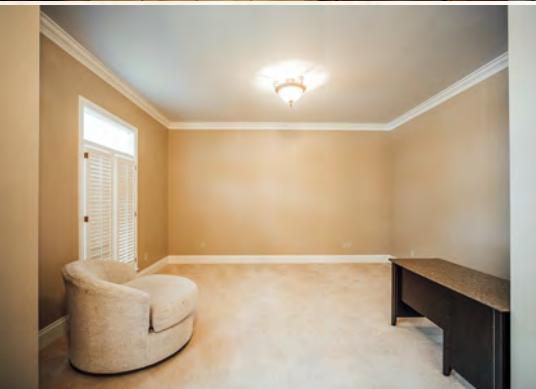


**MICHAEL OSWALT, ALC** | PRINCIPAL BROKER  
C: 662-719-3967 | michael@smalltownproperties.com

**RACHEL BOYD** | RESIDENTIAL SPECIALIST  
C: 913-212-8419 | rachel@smalltownproperties.com

*Information is believed to be accurate but not guaranteed.*

4848 Main St. - Flora, MS 39071 | O: 769-888-2522 | smalltownproperties.com



**MICHAEL OSWALT, ALC** | PRINCIPAL BROKER  
C: 662-719-3967 | michael@smalltownproperties.com

**RACHEL BOYD** | RESIDENTIAL SPECIALIST  
C: 913-212-8419 | rachel@smalltownproperties.com

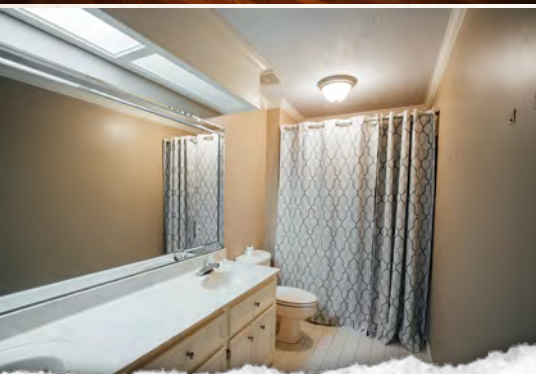
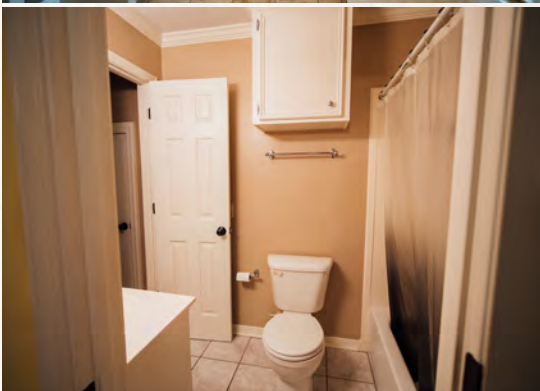
Information is believed to be accurate but not guaranteed.

4848 Main St. - Flora, MS 39071 | O: 769-888-2522 | smalltownproperties.com



336 LONG COVE DRIVE

MADISON COUNTY, MISSISSIPPI



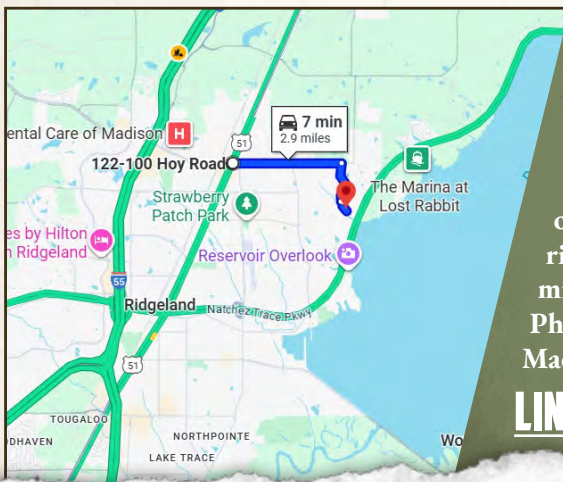
**MICHAEL OSWALT, ALC** | PRINCIPAL BROKER  
C: 662-719-3967 | michael@smalltownproperties.com

**RACHEL BOYD** | RESIDENTIAL SPECIALIST  
C: 913-212-8419 | rachel@smalltownproperties.com

Information is believed to be accurate but not guaranteed.

4848 Main St. - Flora, MS 39071 | O: 769-888-2522 | smalltownproperties.com



land id. **LINK****FLOOD MAP**

Directions From the Intersection of Hwy 51 and Hoy Road in Madison, MS: Travel 2 miles east on Hoy Road. Turn right at the entrance of Northbay Subdivision on Northbay Drive and continue 0.7 miles. Turn left on Northbay Place and take the first right on Long Cove Drive. Proceed 0.2 miles to the property on the right.

Physical Address: 336 Long Cove Drive  
Madison, MS 39110

**LINK TO GOOGLE MAP DIRECTIONS**



**MICHAEL OSWALT, ALC** | PRINCIPAL BROKER  
C: 662-719-3967 | michael@smalltownproperties.com



**SMALLTOWN**  
HUNTING PROPERTIES  
& REAL ESTATE<sup>SM</sup>



**RACHEL BOYD** | RESIDENTIAL SPECIALIST  
C: 913-212-8419 | rachel@smalltownproperties.com

Information is believed to be accurate but not guaranteed.