

55± ACRES
LAWRENCE COUNTY, MS
\$195,000



SMALLTOWN
HUNTING PROPERTIES
& REAL ESTATESM

OFFICE (769) 760-0005

THE LAWRENCE 55

PROPERTY PROFILE

LOCATION:

- Daughdrill Road
Silver Creek, MS 39666
- Lawrence County
- 4.6± Miles N of Silver Creek
- 53.8± Miles NW of Hattiesburg
- 129± Miles NE of
Baton Rouge, LA

COORDINATES:

- 31.653686, -89.981765

TAX INFORMATION:

- Parcel 119-0023-00004.00
- 2024 Taxes \$212.16

PROPERTY USE:

- Deer & Turkey Hunting
- Family Getaway
- Outdoor Lifestyle
- Potential Home Sites

PROPERTY INFORMATION:

- 55± Acres
- County Road Frontage
- Mature Hardwood
- Rolling to Flat Terrain
- Utilities Available at the Road



DENNIS WEST | MANAGING BROKER
C: 601-248-4396 | dennis@smalltownproperties.com

DEWAYNE ATKINSON | LAND SPECIALIST
C: 601-832-3075 | dewayne@smalltownproperties.com

2121 5th St., Ste 206 - Meridian, MS 39301 | O: 769-760-0005 | smalltownproperties.com Information is believed to be accurate but not guaranteed.

WELCOME TO THE LAWRENCE 55

WELCOME TO THE LAWRENCE 55, WHERE YOU CAN HUNT IN THE HARDWOODS!
The 55± acre tract offers rolling to flat terrain with a great blend of mature hardwood and pine timber, providing both natural beauty and long-term investment potential.

With abundant wildlife, including deer, turkey, and small game, it's an ideal property for the avid hunter or outdoor enthusiast. The land features excellent road frontage along Daughdrill Road, making access convenient and opening the door for multiple cabin or home sites. Utilities are available at the road.

Whether you're looking for a hunting retreat, a future homestead, or a timber investment, the Lawrence 55 has the features to fit your needs.

**Contact Dennis West or Dewayne Atkinson
today to schedule a private tour!**



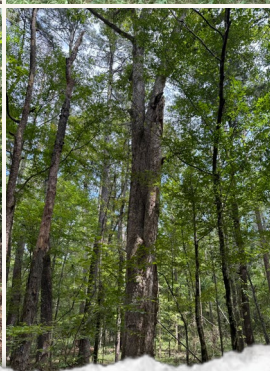
DENNIS WEST | MANAGING BROKER
C: 601-248-4396 | dennis@smalltownproperties.com

DEWAYNE ATKINSON | LAND SPECIALIST
C: 601-832-3075 | dewayne@smalltownproperties.com

2121 5th St., Ste 206 - Meridian, MS 39301 | O: 769-760-0005 | smalltownproperties.com Information is believed to be accurate but not guaranteed.

55 ± ACRES

LAWRENCE COUNTY, MISSISSIPPI



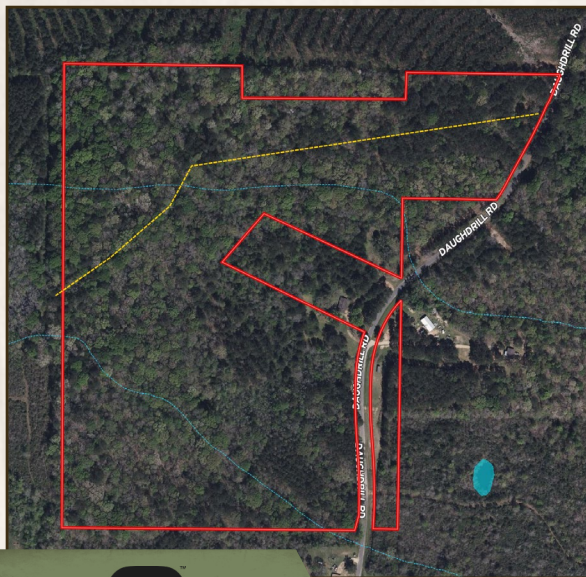
DENNIS WEST | MANAGING BROKER
C: 601-248-4396 | dennis@smalltownproperties.com

DEWAYNE ATKINSON | LAND SPECIALIST
C: 601-832-3075 | dewayne@smalltownproperties.com

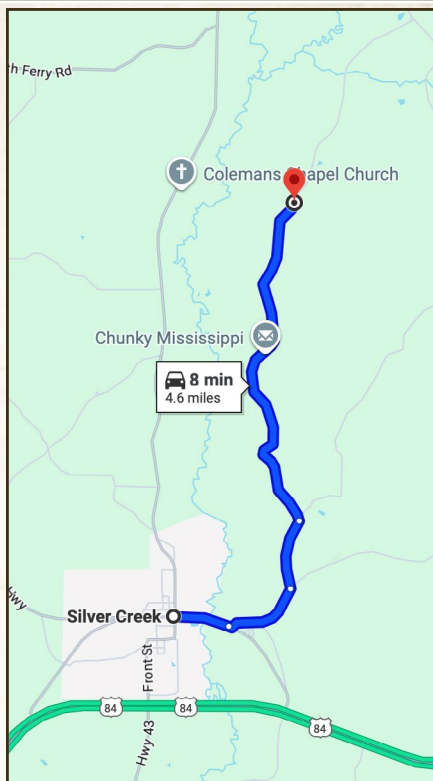
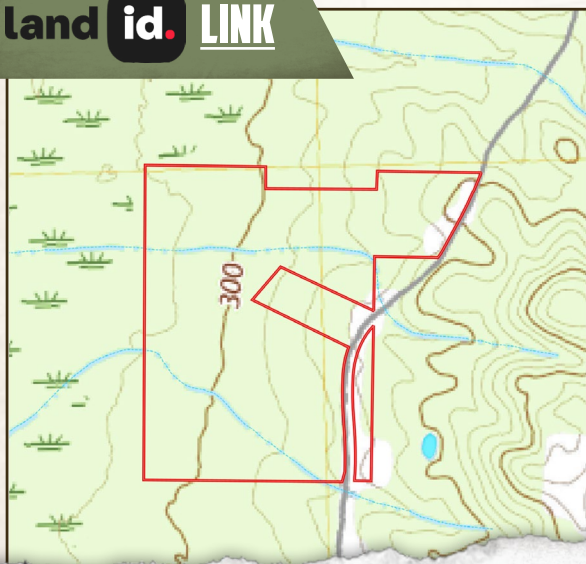
2121 5th St., Ste 206 - Meridian, MS 39301 | O: 769-760-0005 | smalltownproperties.com Information is believed to be accurate but not guaranteed.

55 ± ACRES

LAWRENCE COUNTY, MISSISSIPPI



land id. LINK



Directions From Silver Creek, MS: Travel 4.5 miles north on Daughdrill Road 4.5 to the property on the left.

[LINK TO GOOGLE MAP DIRECTIONS](#)



DENNIS WEST | MANAGING BROKER
C: 601-248-4396 | dennis@smalltownproperties.com



DEWAYNE ATKINSON | LAND SPECIALIST
C: 601-832-3075 | dewayne@smalltownproperties.com