

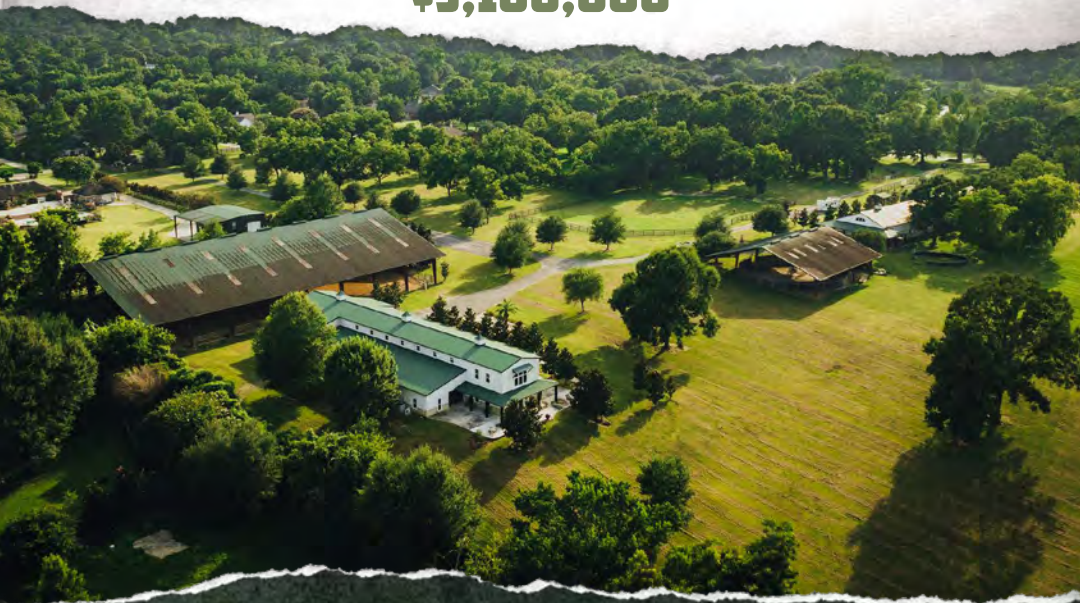


# SMALLTOWN

HUNTING PROPERTIES  
& REAL ESTATE<sup>SM</sup>



**100± ACRE EQUESTRIAN CENTER**  
**LAFAYETTE PARISH, LA**  
**\$3,100,000**



OFFICE (318) 974-8185 | [WWW.SMALLTOWNPROPERTIES.COM](http://WWW.SMALLTOWNPROPERTIES.COM)

# THE LAFAYETTE 100

## PROPERTY PROFILE

### LOCATION:

- 110 Blue Ridge Drive  
Carencro, LA 70520
- Lafayette Parish
- 4.5± Miles N of Carencro
- 11.2± Miles N of Lafayette
- 60.6± Miles W of Baton Rouge
- 81.4± Miles S of Alexandria

### COORDINATES:

- 30.36447, -92.01754

### PROPERTY USE:

- Equestrian Center
- Recreational
- Mixed Venue
- Fishing

### TAX INFORMATION:

- Parcel id 6070133: \$5,474.22
- Parcel id 6108588: \$1,567.51
- Parcel id 6111438: \$1,975,000
- Parcel id 6088262: \$1,360,000

### PROPERTY INFORMATION:

- 100± Total Acres
- Sits Atop Coteau Ridge
- Rolling Hills
- 4 Ponds
- Meticulous Landscaping
- State-of-the-Art Equestrian Center
- Primary Barn
  - 14 Stalls
  - 2 Birthing Stalls
  - Breeding Area
  - Office
- Secondary Barn
  - 16 Stalls
  - 4 Birthing Stalls
  - 4 Wash Bays
  - Living Quarters
- 100' x 200' Covered Arena
- 3,792± SqFt Main Living Area
  - 2 Bedrooms/2 Baths
- 2,760± SqFt Rustic Log Cabin
  - 3 Bedrooms/2 Baths
  - Wrap-Around Deck
- 1,200± SqFt Apartment
  - 2 Bedrooms/2 Baths



**SMALLTOWN**  
HUNTING PROPERTIES  
& REAL ESTATE<sup>SM</sup>

**KENNETH MARKS**

LAND SPECIALIST

C: 337-288-1293

O: 318-974-8185

[kenneth@smalltownproperties.com](mailto:kenneth@smalltownproperties.com)

4848 Main St. - Flora, MS 39071

[smalltownproperties.com](http://smalltownproperties.com)

Information is believed to be accurate but not guaranteed.



# WELCOME TO THE LAFAYETTE 100

**WELCOME TO A STATE-OF-THE-ART EQUESTRIAN CENTER IN CARENCRO, LOUISIANA!** This stunning 100± acre Lafayette Parish property sits atop the picturesque Coteau Ridge with rolling hills and unparalleled natural beauty. The estate is complete with a primary barn offering 14 stalls, 2 birthing stalls, a breeding area, and an office. A secondary barn adds 16 stalls, 4 birthing stalls, 4 wash bays, and living quarters, making it ideal for equestrian operations.

A 100' x 200' covered riding arena provides a premier space for year-round training and events. The property also boasts luxurious residential accommodations, including a 3,792± square foot main living area offering two bedrooms and two bathrooms overlooking a manicured hillside.



**SMALLTOWN**  
HUNTING PROPERTIES  
& REAL ESTATE<sup>SM</sup>

**KENNETH MARKS**

LAND SPECIALIST

C: 337-288-1293

O: 318-974-8185

[kenneth@smalltownproperties.com](mailto:kenneth@smalltownproperties.com)

4848 Main St. - Flora, MS 39071

[smalltownproperties.com](http://smalltownproperties.com)

Information is believed to be accurate but not guaranteed.

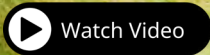
# MORE ABOUT THE LAFAYETTE 100

Head down to a 2,760± square foot rustic log cabin that features three bedrooms, two bathrooms, and a wrap-around dock situated on a beautiful bass pond. Additionally, there is a 1,200± square foot apartment with two bedrooms and two bathrooms overlooking the riding arena.

The estate's outdoor features include four picturesque ponds and meticulously maintained landscaping, creating a serene and functional retreat. This place is a dream come true for equestrian enthusiasts or anyone else seeking a luxurious rural lifestyle.

**To learn more and to schedule a private tour,  
contact Kenneth Marks today!**

**[CLICK HERE](#) OR SCAN THE CODE TO WATCH A VIDEO**



**SMALLTOWN**  
HUNTING PROPERTIES  
& REAL ESTATE<sup>SM</sup>

**KENNETH MARKS**

LAND SPECIALIST

C: 337-288-1293

O: 318-974-8185

[kenneth@smalltownproperties.com](mailto:kenneth@smalltownproperties.com)

4848 Main St. - Flora, MS 39071

[smalltownproperties.com](http://smalltownproperties.com)

Information is believed to be accurate but not guaranteed.



100 ± ACRE EQUESTRIAN CENTER

LAFAYETTE PARISH, LOUISIANA



**SMALLTOWN**  
HUNTING PROPERTIES  
& REAL ESTATE<sup>SM</sup>

**KENNETH MARKS**

LAND SPECIALIST

C: 337-288-1293

O: 318-974-8185

[kenneth@smalltownproperties.com](mailto:kenneth@smalltownproperties.com)

4848 Main St. - Flora, MS 39071

[smalltownproperties.com](http://smalltownproperties.com)

Information is believed to be accurate but not guaranteed.



100 ± ACRE EQUESTRIAN CENTER

LAFAYETTE PARISH, LOUISIANA



**SMALLTOWN**  
HUNTING PROPERTIES  
& REAL ESTATE<sup>SM</sup>

**KENNETH MARKS**

LAND SPECIALIST

C: 337-288-1293

O: 318-974-8185

[kenneth@smalltownproperties.com](mailto:kenneth@smalltownproperties.com)

4848 Main St. - Flora, MS 39071

[smalltownproperties.com](http://smalltownproperties.com)

Information is believed to be accurate but not guaranteed.



100 ± ACRE EQUESTRIAN CENTER

LAFAYETTE PARISH, LOUISIANA



**SMALLTOWN**  
HUNTING PROPERTIES  
& REAL ESTATE<sup>SM</sup>

**KENNETH MARKS**

LAND SPECIALIST

C: 337-288-1293

O: 318-974-8185

[kenneth@smalltownproperties.com](mailto:kenneth@smalltownproperties.com)

4848 Main St. - Flora, MS 39071

[smalltownproperties.com](http://smalltownproperties.com)

Information is believed to be accurate but not guaranteed.

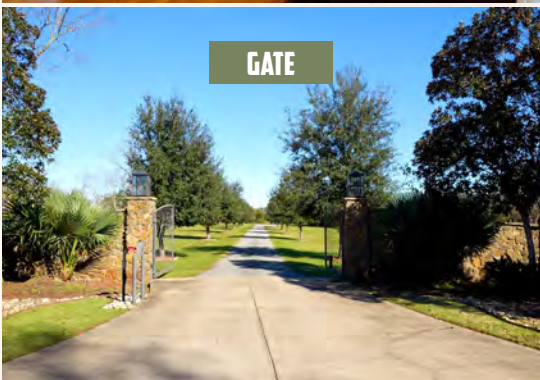




CABIN



DOCK



GATE



MAIN HOUSE



PASTURE



**SMALLTOWN**  
HUNTING PROPERTIES  
& REAL ESTATE<sup>SM</sup>

**KENNETH MARKS**

LAND SPECIALIST

C: 337-288-1293

O: 318-974-8185

[kenneth@smalltownproperties.com](mailto:kenneth@smalltownproperties.com)

4848 Main St. - Flora, MS 39071

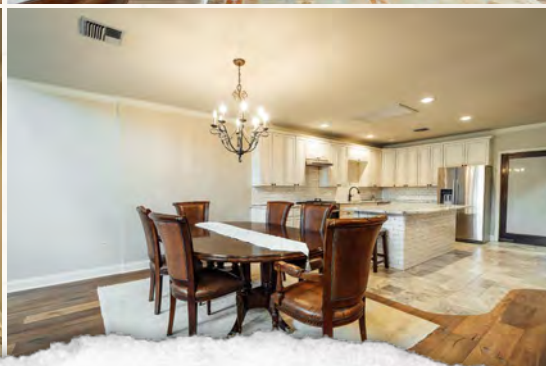
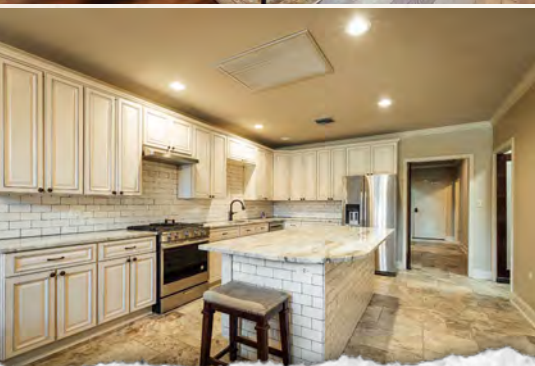
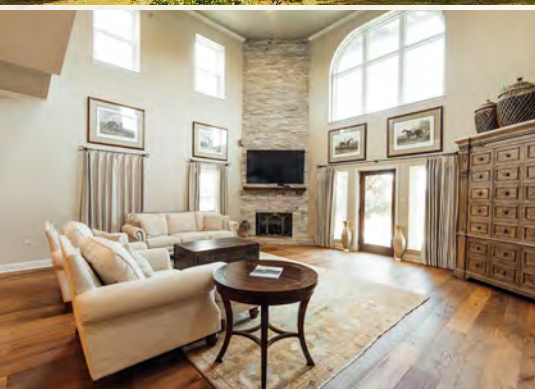
[smalltownproperties.com](http://smalltownproperties.com)

Information is believed to be accurate but not guaranteed.



100 ± ACRE EQUESTRIAN CENTER

LAFAYETTE PARISH, LOUISIANA



**SMALLTOWN**  
HUNTING PROPERTIES  
& REAL ESTATE<sup>SM</sup>

**KENNETH MARKS**

LAND SPECIALIST

C: 337-288-1293

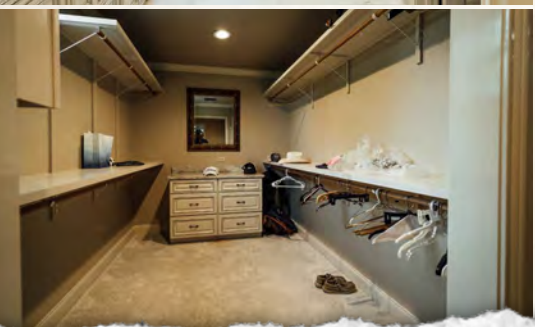
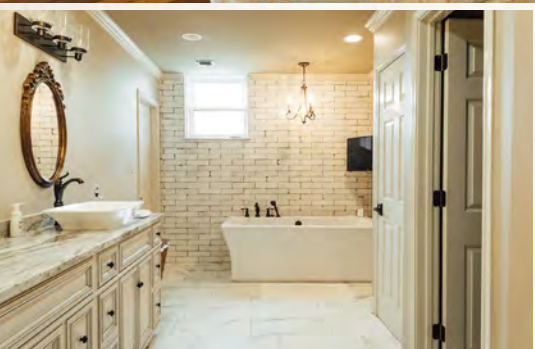
O: 318-974-8185

[kenneth@smalltownproperties.com](mailto:kenneth@smalltownproperties.com)

4848 Main St. - Flora, MS 39071

[smalltownproperties.com](http://smalltownproperties.com)

Information is believed to be accurate but not guaranteed.



**SMALLTOWN**  
HUNTING PROPERTIES  
& REAL ESTATE<sup>SM</sup>

**KENNETH MARKS**

LAND SPECIALIST

C: 337-288-1293

O: 318-974-8185

[kenneth@smalltownproperties.com](mailto:kenneth@smalltownproperties.com)

4848 Main St. - Flora, MS 39071

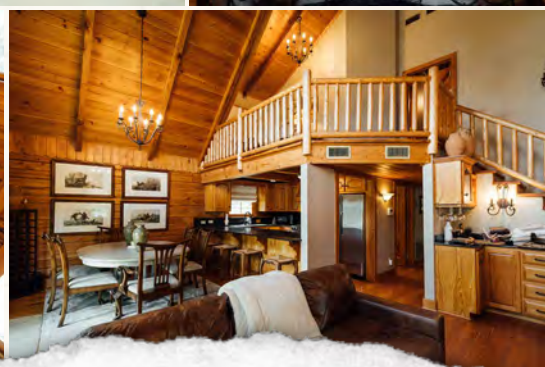
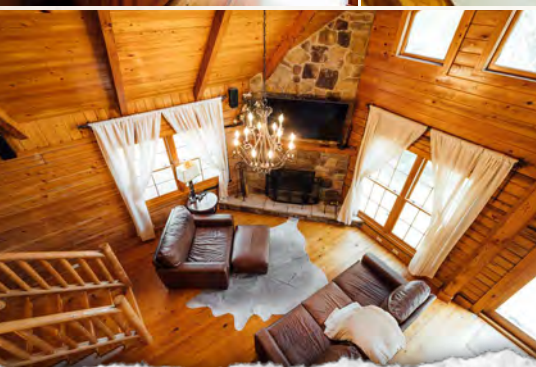
[smalltownproperties.com](http://smalltownproperties.com)

Information is believed to be accurate but not guaranteed.



100 ± ACRE EQUESTRIAN CENTER

LAFAYETTE PARISH, LOUISIANA



**SMALLTOWN**  
HUNTING PROPERTIES  
& REAL ESTATE<sup>SM</sup>

**KENNETH MARKS**

LAND SPECIALIST

C: 337-288-1293

O: 318-974-8185

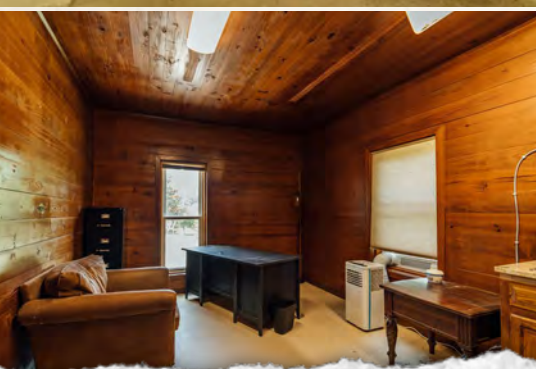
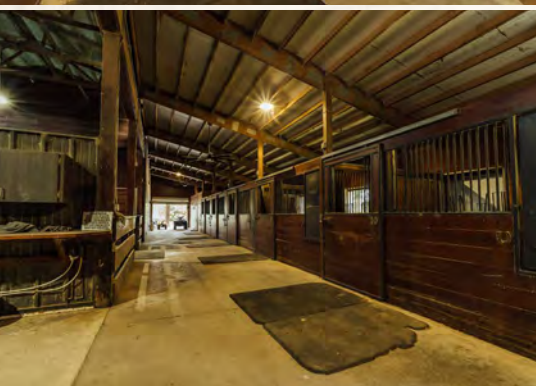
[kenneth@smalltownproperties.com](mailto:kenneth@smalltownproperties.com)

4848 Main St. - Flora, MS 39071

[smalltownproperties.com](http://smalltownproperties.com)

Information is believed to be accurate but not guaranteed.





**SMALLTOWN**  
HUNTING PROPERTIES  
& REAL ESTATE<sup>SM</sup>

**KENNETH MARKS**

LAND SPECIALIST

C: 337-288-1293

O: 318-974-8185

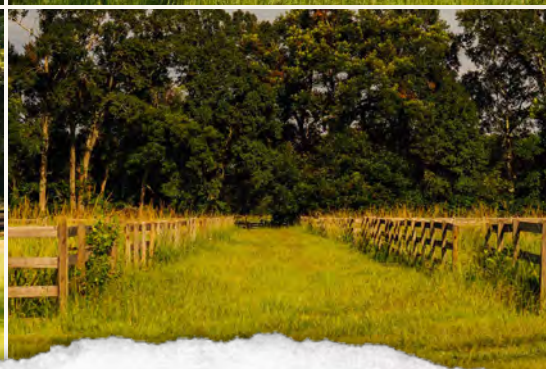
[kenneth@smalltownproperties.com](mailto:kenneth@smalltownproperties.com)

4848 Main St. - Flora, MS 39071

[smalltownproperties.com](http://smalltownproperties.com)

Information is believed to be accurate but not guaranteed.





**SMALLTOWN**  
HUNTING PROPERTIES  
& REAL ESTATE<sup>SM</sup>

**KENNETH MARKS**

LAND SPECIALIST

C: 337-288-1293

O: 318-974-8185

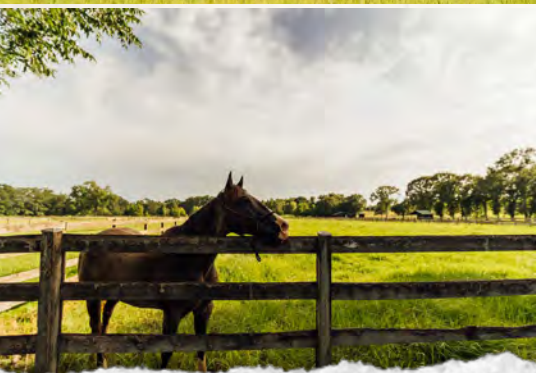
[kenneth@smalltownproperties.com](mailto:kenneth@smalltownproperties.com)

4848 Main St. - Flora, MS 39071

[smalltownproperties.com](http://smalltownproperties.com)

Information is believed to be accurate but not guaranteed.





**SMALLTOWN**  
HUNTING PROPERTIES  
& REAL ESTATE<sup>SM</sup>

**KENNETH MARKS**

LAND SPECIALIST

C: 337-288-1293

O: 318-974-8185

[kenneth@smalltownproperties.com](mailto:kenneth@smalltownproperties.com)

4848 Main St. - Flora, MS 39071

[smalltownproperties.com](http://smalltownproperties.com)

Information is believed to be accurate but not guaranteed.



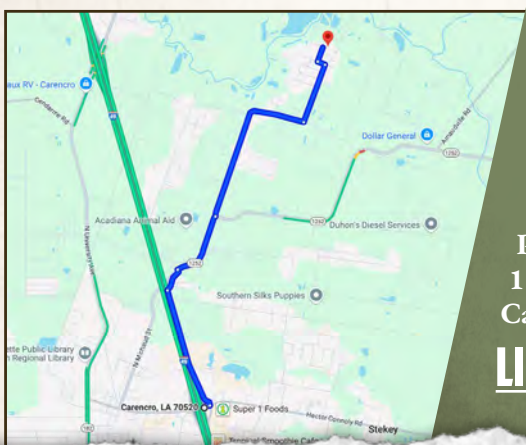


land **id.** LINK

**Directions From Carencro, LA:**  
Travel 1.1 miles on I-49 Frontage Road to LA-1252/Frontage Rd and turn right. In 0.2 miles turn right onto LA-1252 and proceed 0.6 miles. Continue 1.4 miles on Kidder Road. Turn left on Trappey Road and proceed 0.5 miles. Turn left on Blue Ridge Drive and the destination will be on the right.

**Physical Address:**  
110 Blue Ridge Drive  
Carencro, LA 70520

**LINK TO GOOGLE MAP DIRECTIONS**



**SMALLTOWN**  
HUNTING PROPERTIES  
& REAL ESTATE<sup>SM</sup>

**KENNETH MARKS**

LAND SPECIALIST

C: 337-288-1293

O: 318-974-8185

kenneth@smalltownproperties.com

4848 Main St. - Flora, MS 39071

smalltownproperties.com

Information is believed to be accurate but not guaranteed.