

**SLAY WILDERNESS AREA, INC.**  
**COPIAH COUNTY, MS**  
**ONE EQUITY SHARE | \$200,000**



**SMALLTOWN**  
HUNTING PROPERTIES  
& REAL ESTATE<sup>SM</sup>

OFFICE (769) 888-2522 | [WWW.SMALLTOWNPROPERTIES.COM](http://WWW.SMALLTOWNPROPERTIES.COM)

# SLAY WILDERNESS AREA, INC.

## PROPERTY PROFILE

### LOCATION:

- 2142 Tyson Road  
Wesson, MS 39191
- Copiah County
- 20± Miles N of Brookhaven
- 45± Miles S of the  
Jackson Metro Area
- 96± Miles N of Hammond, LA
- 120± Miles N of Baton Rouge, LA

### COORDINATES:

- 31.784317, -90.453443

### PROPERTY USE:

- Recreational
- Trophy Hunting
- Fishing

### PROPERTY INFORMATION:

- 2,200± Total Acres
- 1,200± Acres Owned
- 1,000± Acres Leased

- 23 Shares Held by 18 Members
- Includes One Private Condo
- 33 Wildlife Plots
- 23 Box Stands
- Numerous Ladder Stands
- Established In 1995
- Main Lodge
- Skinning Shed & Walk In Cooler
- Dry Storage Secured for ATVs, Etc
- 6± Miles of Bayou Pierre Frontage
- 3± Acre Stocked Lake
- Mature Timber, Cutover,  
Sloughs, Bayous, Fields
- Deer, Turkey & Small Game
- Skeet Station Range  
with 5 Stands & 6 Throwers
- Extensively Managed
- Wireless Internet Service
- Family Friendly Camp:  
Bring the Wives and Kids
- Membership Subject to Approval
- Annual Dues/Debt Assumption  
Available Upon Request



**SMALLTOWN**  
HUNTING PROPERTIES  
& REAL ESTATE<sup>SM</sup>

**BRADEN SMITH**

LAND SPECIALIST

C: 601-757-9193

O: 769-888-2522

[braden@smalltownproperties.com](mailto:braden@smalltownproperties.com)

4848 Main St. - Flora, MS 39071

[smalltownproperties.com](http://smalltownproperties.com)

Information is believed to be accurate but not guaranteed.



# WELCOME TO SLAY WILDERNESS AREA, INC.

**WELCOME TO SLAY WILDERNESS AREA, INC., IN COPIAH COUNTY, MS.** As a shareholder in Slay Wilderness, you will gain access to exceptional amenities of the main lodge, a true centerpiece of this massive property. Designed for comfort and camaraderie, the lodge features an industrial-style kitchen, a spacious dining area, and a warm, inviting lounge perfect for relaxing or entertaining after a day in the field. A spacious bathhouse offers multiple showers and several bunk-style bedrooms, ample accommodations for hosting family or guests. Just behind the lodge, you'll find two large buildings housing private condos that overlook a fully stocked 3± acre lake. Around the corner, a covered, lighted skinning shed with a walk-in cooler makes processing game convenient and efficient. A large equipment barn with private bays ensures your gear and buggies stay clean and out of the elements. This particular equity share includes a 525± square foot, one bedroom, one bathroom condo with a back porch view of the lake.



**SMALLTOWN**  
HUNTING PROPERTIES  
& REAL ESTATE<sup>SM</sup>

**BRADEN SMITH**

LAND SPECIALIST

C: 601-757-9193

O: 769-888-2522

[braden@smalltownproperties.com](mailto:braden@smalltownproperties.com)

4848 Main St. - Flora, MS 39071

[smalltownproperties.com](http://smalltownproperties.com)

Information is believed to be accurate but not guaranteed.

# MORE ABOUT SLAY WILDERNESS AREA, INC.

Spanning approximately 2,200 acres in the heart of Copiah County, Slay Wilderness offers some of the finest hunting opportunities in the region. With nearly six miles of Bayou Pierre weaving through the property, the land features giant hardwood timber, ideal turkey habitat, and a variety of strategically maintained wildlife cuts to support a strong population of mature whitetail deer. The property is equipped with 23 box stands and numerous ladder stands, each thoughtfully placed for optimal hunting across different wind conditions. For small game, the woods are full of squirrels and raccoons—just pick a trail and head out. The land is thoughtfully divided into four distinct quadrants by blacktop roads and the bayou itself, helping to manage hunting pressure and ensure every member enjoys a rewarding experience. Every detail has been considered at this turnkey hunting property, and the accommodations are second to none.

**If you have been on the lookout for an equity share club with a pleasant common lodge, fantastic hunting, and a family atmosphere, call Braden Smith today for your private showing of Slay Wilderness!**



**SMALLTOWN**  
HUNTING PROPERTIES  
& REAL ESTATE<sup>SM</sup>

**BRADEN SMITH**

LAND SPECIALIST

C: 601-757-9193

O: 769-888-2522

[braden@smalltownproperties.com](mailto:braden@smalltownproperties.com)

4848 Main St. - Flora, MS 39071

[smalltownproperties.com](http://smalltownproperties.com)

Information is believed to be accurate but not guaranteed.





**SMALLTOWN**  
HUNTING PROPERTIES  
& REAL ESTATE<sup>SM</sup>

**BRADEN SMITH**

LAND SPECIALIST

C: 601-757-9193

O: 769-888-2522

[braden@smalltownproperties.com](mailto:braden@smalltownproperties.com)

4848 Main St. - Flora, MS 39071

[smalltownproperties.com](http://smalltownproperties.com)

Information is believed to be accurate but not guaranteed.





**SMALLTOWN**  
HUNTING PROPERTIES  
& REAL ESTATE<sup>SM</sup>

**BRADEN SMITH**

LAND SPECIALIST

C: 601-757-9193

O: 769-888-2522

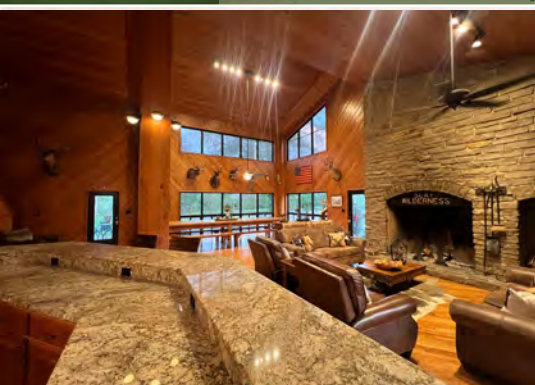
[braden@smalltownproperties.com](mailto:braden@smalltownproperties.com)

4848 Main St. - Flora, MS 39071

[smalltownproperties.com](http://smalltownproperties.com)

Information is believed to be accurate but not guaranteed.





**SMALLTOWN**  
HUNTING PROPERTIES  
& REAL ESTATE<sup>SM</sup>

**BRADEN SMITH**

LAND SPECIALIST

C: 601-757-9193

O: 769-888-2522

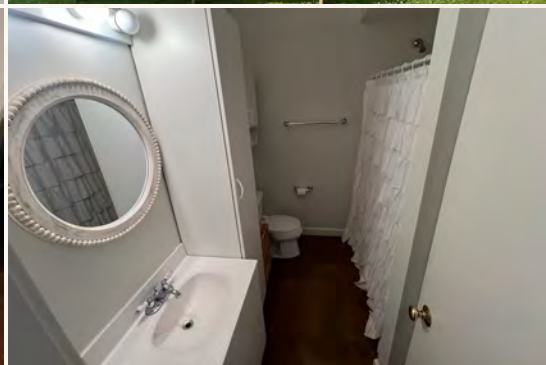
[braden@smalltownproperties.com](mailto:braden@smalltownproperties.com)

4848 Main St. - Flora, MS 39071

[smalltownproperties.com](http://smalltownproperties.com)

Information is believed to be accurate but not guaranteed.

PRIVATE CONDO



**SMALLTOWN**  
HUNTING PROPERTIES  
& REAL ESTATE<sup>SM</sup>

**BRADEN SMITH**

LAND SPECIALIST

C: 601-757-9193

O: 769-888-2522

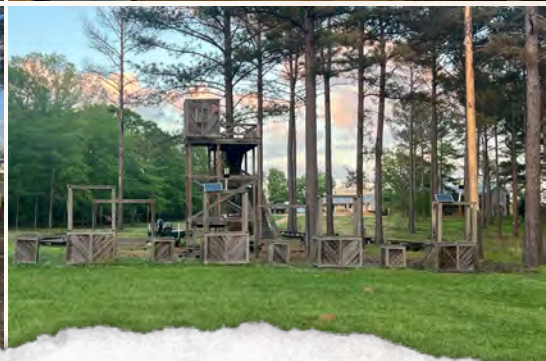
[braden@smalltownproperties.com](mailto:braden@smalltownproperties.com)

4848 Main St. - Flora, MS 39071

[smalltownproperties.com](http://smalltownproperties.com)

Information is believed to be accurate but not guaranteed.





**SMALLTOWN**  
HUNTING PROPERTIES  
& REAL ESTATE<sup>SM</sup>

**BRADEN SMITH**

LAND SPECIALIST

C: 601-757-9193

O: 769-888-2522

[braden@smalltownproperties.com](mailto:braden@smalltownproperties.com)

4848 Main St. - Flora, MS 39071

[smalltownproperties.com](http://smalltownproperties.com)

Information is believed to be accurate but not guaranteed.



ONE EQUITY SHARE

SLAY WILDERNESS AREA, INC.

COPIAH COUNTY, MISSISSIPPI



**SMALLTOWN**  
HUNTING PROPERTIES  
& REAL ESTATE<sup>SM</sup>

**BRADEN SMITH**

LAND SPECIALIST

C: 601-757-9193

O: 769-888-2522

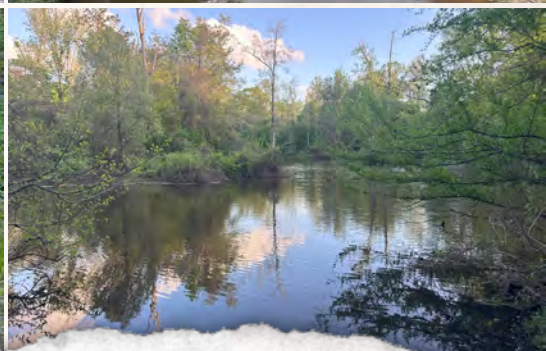
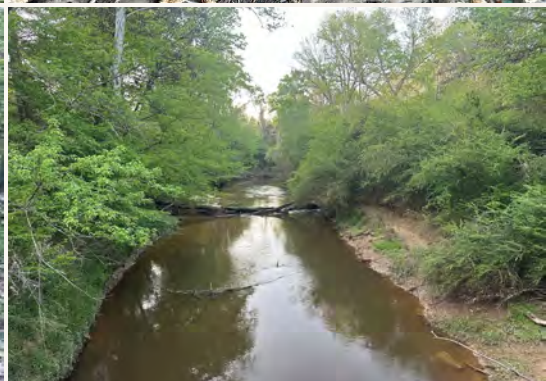
[braden@smalltownproperties.com](mailto:braden@smalltownproperties.com)

4848 Main St. - Flora, MS 39071

[smalltownproperties.com](http://smalltownproperties.com)

Information is believed to be accurate but not guaranteed.





**SMALLTOWN**  
HUNTING PROPERTIES  
& REAL ESTATE<sup>SM</sup>

**BRADEN SMITH**

LAND SPECIALIST

C: 601-757-9193

O: 769-888-2522

[braden@smalltownproperties.com](mailto:braden@smalltownproperties.com)

4848 Main St. - Flora, MS 39071

[smalltownproperties.com](http://smalltownproperties.com)

Information is believed to be accurate but not guaranteed.





**SMALLTOWN**  
HUNTING PROPERTIES  
& REAL ESTATE<sup>SM</sup>

**BRADEN SMITH**

LAND SPECIALIST

C: 601-757-9193

O: 769-888-2522

[braden@smalltownproperties.com](mailto:braden@smalltownproperties.com)

4848 Main St. - Flora, MS 39071

[smalltownproperties.com](http://smalltownproperties.com)

Information is believed to be accurate but not guaranteed.





**SMALLTOWN**  
HUNTING PROPERTIES  
& REAL ESTATE<sup>SM</sup>

**BRADEN SMITH**

LAND SPECIALIST

C: 601-757-9193

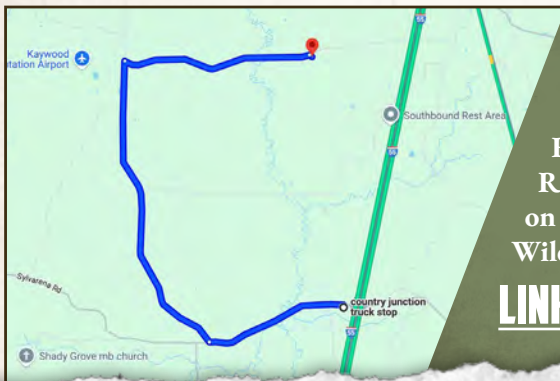
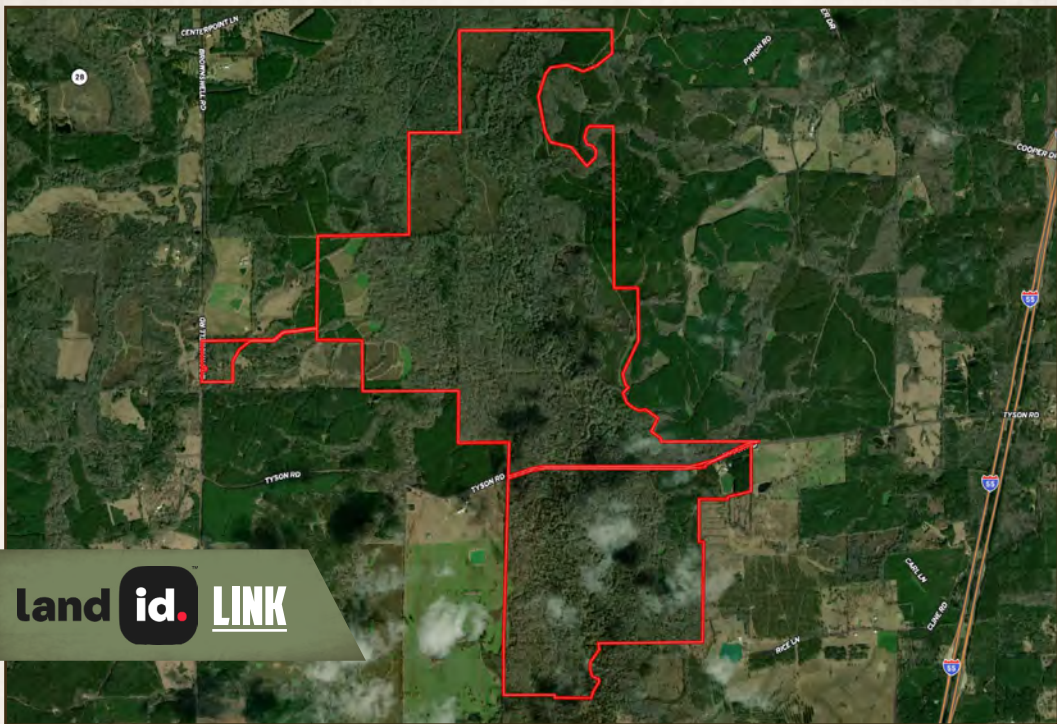
O: 769-888-2522

[braden@smalltownproperties.com](mailto:braden@smalltownproperties.com)

4848 Main St. - Flora, MS 39071

[smalltownproperties.com](http://smalltownproperties.com)

Information is believed to be accurate but not guaranteed.



Directions From the Country Junction Truck Stop off Exit 51 on I-55: Travel 2 miles west on Sylwarena Road. Turn right on Brownswell Road and continue 2 miles. Turn right on Tyson Road and in 2.6 miles Slay Wilderness will be on the right.

**LINK TO GOOGLE MAP DIRECTIONS**



**SMALLTOWN**  
HUNTING PROPERTIES  
& REAL ESTATE<sup>SM</sup>

**BRADEN SMITH**

LAND SPECIALIST

C: 601-757-9193

O: 769-888-2522

[braden@smalltownproperties.com](mailto:braden@smalltownproperties.com)

4848 Main St. - Flora, MS 39071

[smalltownproperties.com](http://smalltownproperties.com)

Information is believed to be accurate but not guaranteed.