

106± ACRES WITH A CABIN

LAMAR COUNTY, AL

\$349,000



SMALLTOWN
HUNTING PROPERTIES
& REAL ESTATESM

OFFICE (769) 760-0005 | WWW.SMALLTOWNPROPERTIES.COM

THE LAMAR 106

PROPERTY PROFILE

LOCATION:

- Lamar County, AL
- Savage Street Frontage
- 46± Miles Northwest of Tuscaloosa

COORDINATES:

- 33.566014, -88.073832

PROPERTY USE:

- Hunting
- Fishing
- Recreation
- Timber Investment

PROPERTY INFORMATION:

- 106± Acres
- County Road Frontage
- Log Cabin
- Power and Water on Site
- Internal Trails
- Food Plots
- Flat Terrain
- Pine Plantation
- Creek Frontage
- Flooded Backwater

TAX INFORMATION:

2023 - \$345.65

- Parcel 19-06-14-0-000-016.000-0
- Parcel 19-06-23-1-000-003.000-0
- Parcel 19-06-23-1-000-003.001-0



DENNIS WEST | MANAGING BROKER
C: 601-248-4396 | dennis@smalltownproperties.com



DEREK EAVES | LAND SPECIALIST
C: 662-803-2001 | derek@smalltownproperties.com

WELCOME TO THE LAMAR 106

IF YOU ARE SEARCHING FOR A SECLUDED CABIN WITH ACREAGE IN WEST CENTRAL ALABAMA, LOOK NO FURTHER! This 106± acre Lamar County tract, situated on Savage Street in Millport, is a turnkey retreat. The property features a 500+ square foot cabin, internal trails, food plots, pine plantation, and frontage on both Luxapallila Creek and Driver Creek. The cozy log cabin offers one bedroom, one bathroom, an open kitchen with a living area, and a loft for additional sleeping space. Enjoy grilling or relaxing on the front and back porches while watching the wildlife graze. The property make up consists of predominantly pine plantation, with trails leading to strategically placed food plots and hunting stands. To the north, the land borders Luxapallila Creek which includes flooded timber that attracts wintering ducks and offers excellent fishing. Historically farmed, the rich soils here are ideal for producing quality deer. The Lamar 106 offers year-round activities: fish the creek and backwater in the summer, and hunt deer and ducks in the winter.

To explore this turnkey retreat, call Dennis West or Derek Eaves today to schedule a private showing.



DENNIS WEST | MANAGING BROKER
C: 601-248-4396 | dennis@smalltownproperties.com



DEREK EAVES | LAND SPECIALIST
C: 662-803-2001 | derek@smalltownproperties.com

106 ± ACRES WITH A CABIN

LAMAR COUNTY, ALABAMA



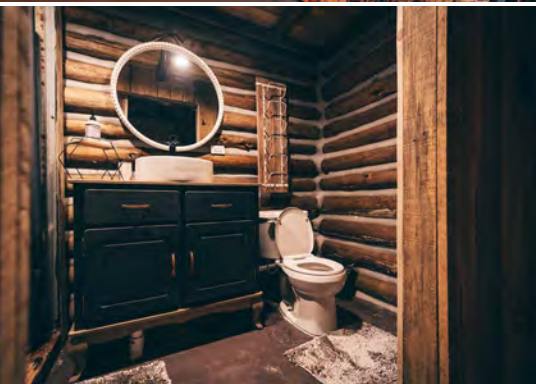
DENNIS WEST | MANAGING BROKER
C: 601-248-4396 | dennis@smalltownproperties.com

DEREK EAVES | LAND SPECIALIST
C: 662-803-2001 | derek@smalltownproperties.com

2121 5th St., Ste 206 - Meridian, MS 39301 | O: 769-760-0005 | smalltownproperties.com Information is believed to be accurate but not guaranteed.

106 ± ACRES WITH A CABIN

LAMAR COUNTY, ALABAMA



DENNIS WEST | MANAGING BROKER
C: 601-248-4396 | dennis@smalltownproperties.com

DEREK EAVES | LAND SPECIALIST
C: 662-803-2001 | derek@smalltownproperties.com

2121 5th St., Ste 206 - Meridian, MS 39301 | O: 769-760-0005 | smalltownproperties.com Information is believed to be accurate but not guaranteed.

106 ± ACRES WITH A CABIN

LAMAR COUNTY, ALABAMA



DENNIS WEST | MANAGING BROKER
C: 601-248-4396 | dennis@smalltownproperties.com



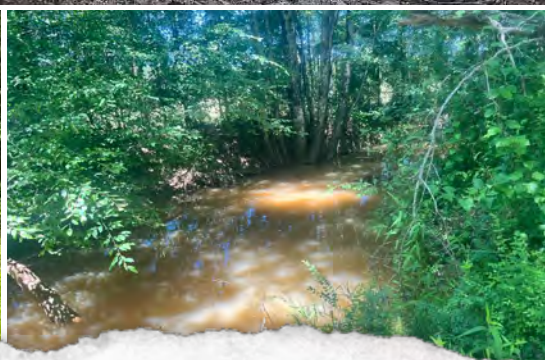
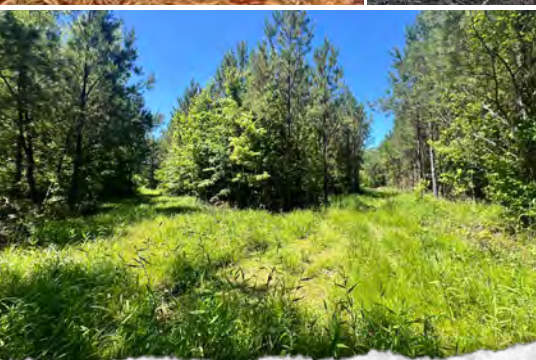
SMALLTOWN
HUNTING PROPERTIES
& REAL ESTATE™



DEREK EAVES | LAND SPECIALIST
C: 662-803-2001 | derek@smalltownproperties.com

106 ± ACRES WITH A CABIN

LAMAR COUNTY, ALABAMA



DENNIS WEST | MANAGING BROKER
C: 601-248-4396 | dennis@smalltownproperties.com



SMALLTOWN
HUNTING PROPERTIES
& REAL ESTATE™



DEREK EAVES | LAND SPECIALIST
C: 662-803-2001 | derek@smalltownproperties.com

106 ± ACRES WITH A CABIN

LAMAR COUNTY, ALABAMA



DENNIS WEST | MANAGING BROKER
C: 601-248-4396 | dennis@smalltownproperties.com



SMALLTOWN
HUNTING PROPERTIES
& REAL ESTATE™



DEREK EAVES | LAND SPECIALIST
C: 662-803-2001 | derek@smalltownproperties.com

106 ± ACRES WITH A CABIN

LAMAR COUNTY, ALABAMA



land id. LINK

TOPOGRAPHY MAP



DENNIS WEST | MANAGING BROKER
C: 601-248-4396 | dennis@smalltownproperties.com



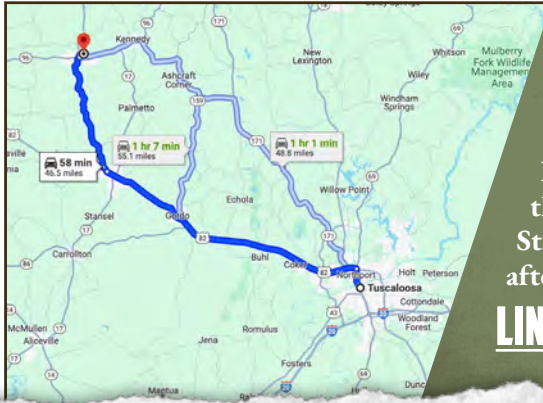
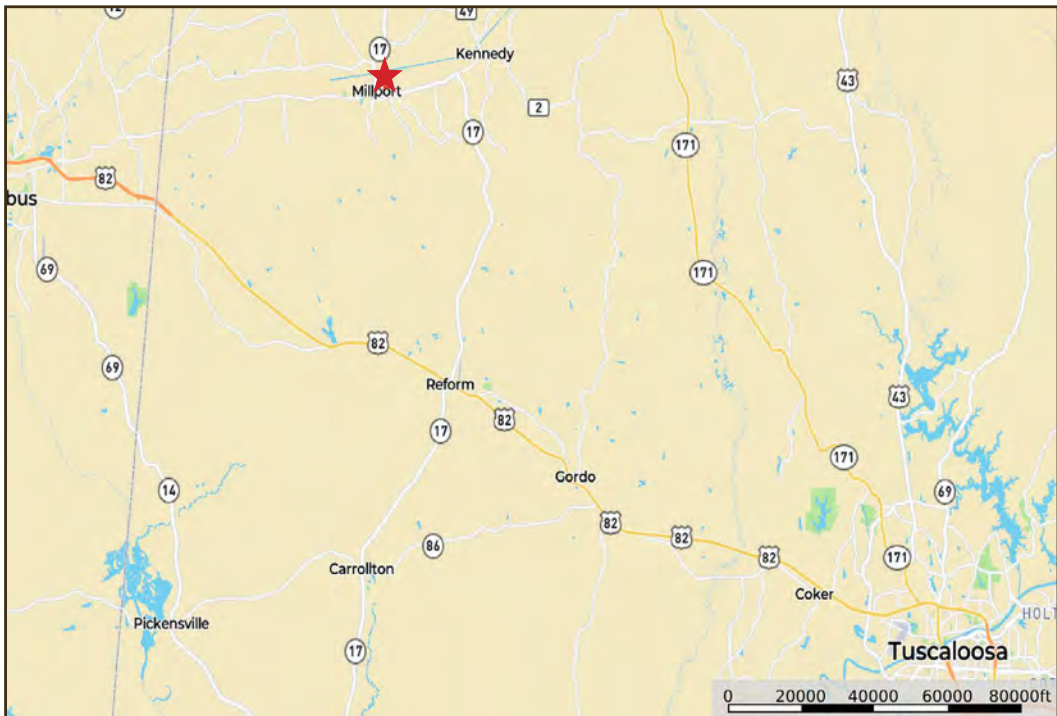
SMALLTOWN
HUNTING PROPERTIES
& REAL ESTATE™



DEREK EAVES | LAND SPECIALIST
C: 662-803-2001 | derck@smalltownproperties.com

106 ± ACRES WITH A CABIN

LAMAR COUNTY, ALABAMA



Directions From the intersection of Hwy 96 and Hwy 17 in Millport, AL: Travel north on Hwy 17 to Railroad Street and turn right. Continue to Elisabeth Street and turn left. Cross the railroad then turn right onto Savage Street. The property will be on the left after crossing the bridge.

[**LINK TO GOOGLE MAP DIRECTIONS**](#)



DENNIS WEST | MANAGING BROKER
C: 601-248-4396 | dennis@smalltownproperties.com



SMALLTOWN
HUNTING PROPERTIES
& REAL ESTATE™



DEREK EAVES | LAND SPECIALIST
C: 662-803-2001 | derck@smalltownproperties.com